



Owen Library 343
(509) 335-8090
emeritussociety@wsu.edu

Let Us Know!

Send responses to
emeritussociety@wsu.edu

- What have you been up to? Do you have any announcements you'd like to share?
- What activities would you like to see the Emeritus Society Sponsor?
- What is your favorite thing about WSU or the Palouse?

The Important Highlights:

Fundraising Update..... 2

Emeriti News..... 3

Legacy of Excellence Award..... 5

Message from the Secretary

Welcome to our first newsletter. Thanks to the effort of our graduate assistant Arielle Aguado, we are finally getting out a newsletter. Hopefully it will be the first of many but that will depend on you and how much stuff you send us. So let us know what is happening in your life professionally or personally.

We recently had a very enjoyable wine tasting at the Gladish center and will be holding more coffees in the future. Perhaps we will try one in the afternoon so non-morning people can attend. But we need ideas for other activities the society might sponsor. That leads me to my last call for volunteers for the

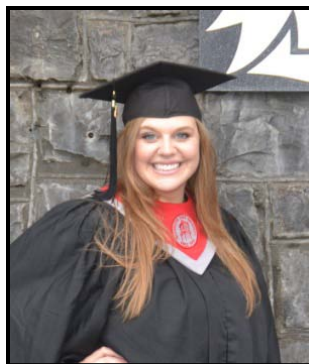
executive committee. I am making a list but would rather have volunteers.

When the budget for Showcase was cut a few years ago we lost our retirees reception and the opportunity as a group to honor our legacy of excellence award recipient. So this year we will hold our own reception for Jim Short on Wednesday March 27th at 4:00 PM in Todd Hall 276. Jim will give a talk and we will have light refreshments. We will also recognize our previous awardees. So mark your calendars for this event and the chance to hear one of the great scientists of his generation Jim Short.

Finally, thank you to everyone who donated to our fund for the Emeritus Society Awards for Excellence in Undergraduate Research and Scholarship. We give four 500 dollar awards one in each in Arts and Humanities, Physically Sciences, Bioscience and the Behavioral, Social and Economic Sciences. However, we did not raise quite enough money; so I am putting the bite on you again. Bad timing I know but contributions would be greatly appreciated. The best way to contribute is online through our homepage.

Best wishes,
Tom

Meet Your Graduate Assistant



Arielle Aguado was hired as a graduate assistant for the Emeritus Society from

January 2013 through December 2013. She will work from the main office in OWEN 343 to assist with projects and office tasks that will benefit the functions of the Emeritus Society. In her short time in this role she would like to be as beneficial as possible.

Currently, her office hours are: Monday and Wednesday at 12pm-5pm;

Tuesday and Thursday at 11am-1pm, and possibly Friday mid-morning to mid- afternoon.

Please feel free to contact Arielle via email at emeritussociety@wsu.edu or via the office phone at (509) 335-8090 if you have any questions, ideas, or concerns related to the Emeritus Society.

Upcoming Events



Please attend some of our biweekly Emeritus Coffees scheduled every few weeks.

BIWEEKLY COFFEES:

The Emeritus Society customarily holds biweekly coffees throughout the semester which are scheduled and promoted every few weeks. These coffees are always held in the Emeritus Society Lounge (OWEN 339) at approximately 10:00am to 11:30am – unless specified otherwise.

Please feel free to stop by anytime during the

scheduled coffee to enjoy the presence of other emeriti. We always love seeing you!

SPECIAL EVENTS:

Every so often we try to plan special events, such as lunches or other gatherings. It just so happens that we just had a wine social on Wednesday February 27. Thank you to those who were able to make it, we hope you had a great time!

The Legacy of Excellence Reception is planned for March 27, 2013 at 4:00 pm in Todd 276. *Please see page 5 for more information regarding this award.*

Please provide Arielle or Tom with any ideas for events you would like to see the Emeritus Society plan. We could always use more inspiration and ideas.

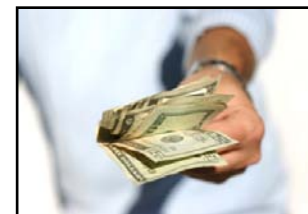
Fundraising Update

It's that time of year again! As most of you know, each spring semester we present several awards to deserving individuals. We grant several \$500 scholarships to talented and deserving students, as well as honor the Legacy of Excellence at a reception in March. If you would like to know more about these awards, please click [here](#).

In order to fund these

awards, we ask for your help. Unfortunately, we have not yet reached our goal for this year. You will be receiving emails about donating throughout the remainder of the semester. Thank you to those who have already donated!

Donating is easy! You can either donate online or download a Donor Form to mail in your donation at emeritusociety.wsu.edu/.



Thank you for your continued support of these programs! Without you these scholarships and awards would not be possible. If you have any questions about donating, please feel free to contact Arielle or Tom.

Rent-A-Rower: March 2013

Rent-A-Rower is an annual fundraising event that the WSU Men's Crew Team puts on. You may literally rent a rower from the WSU Men's Crew team to help you compete a project or help you around the house. The

dates for spring 2013 are March 2, 9, 23, and 24. It costs \$13/hr per rower. If you are interested in requesting a rower, please click [here](#) to fill out a Rent-A-Rower Request Form.

If you would like more information about the

Rent-A-Rower program, please contact Paul Lund, Rent-A-Rower coordinator and Vice Commodore. You may use the Rent-A-Rower Request Form to contact Mr. Lund.



Get to Know Your Fellow Emeriti

"What Have You Been Up To?"

David Youmans (WSU Extension, Emeritus 2005) currently resides in a small college town in the Tennessee hills. He and his wife Julia Correa-Youmans are members of a small writer's guild at a local library and meet monthly. David's two books *Wherever Home Is* (ISBN 0-7414-4108-X) and *Beyond the Forested Ridge* (ISBN 0-7414-5827-6) were announced before and have been read by a few of the emeriti groupies! He is concluding his third manuscript (memoirs/essays) which should be available early this year. Julia's book of poetry *Ecoss* was published in Amman, Jordan. Spare time (when available) is absorbed keeping track of three sons, fourteen grandchildren and five great-grandchildren scattered across four states.

Be well and be happy, WSU Emeriti!

Gene Clanton (History, Emeritus 1997) is alive and well - for all of those who saw his name mistakenly included in the diseased listing in the latest Washington State magazine. Gene taught for nearly 20 years before retiring, publishing a total of 4 books (two before his retirement and two after). He had spent much of his time caring for his wife who suffers from dementia until about three years ago, when he placed her in a local adult family home. Recently, he returned from a 10-day trip to Costa Rica. Gene likes to say "LOL" that he went down there to see if Rush Limbaugh would put in an appearance since he said he would move there if President Obama was elected for a second term. Well, Gene didn't see him down there, so he thinks Al Franken had it about right back in the mid-90s when he published his book "Rush Limbaugh is a Big Fat Liar."

Bill Lipe (Anthropology, Emeritus 2001) has been named to the Board of Directors of The Archaeological Conservancy. The Conservancy is a non-profit organization devoted to preserving archaeological sites

on private lands in the U.S., so they can continue to be available for research, educational, and cultural heritage uses. Sites are acquired through donation, purchase, or land trades. Since 1980, TAC has preserved more than 400 sites. Based in Albuquerque, NM, the organization has regional offices in Mississippi, Maryland, Ohio, and California. The Conservancy has 23,000 members, and also publishes a magazine, *American Archaeology*, devoted to current developments in the field of archaeology.

Lipe is also continuing to serve on the Board of Directors of the Crow Canyon Archaeological Center in Cortez, Colorado. Founded in 1982, the Center focuses on archaeological research, public education, and collaboration with Native Americans on projects of mutual interest. In the early days of the Center, Lipe helped develop the research program while also holding a faculty position at WSU, and he has served on the board since 1993. He has been gratified to see Crow Canyon grow from a fledgling organization to one with a staff of 50 and a budget of 4.5 million dollars. One of Lipe's PhD students at WSU, Ricky Lightfoot, served as president of the Center from 2000 to 2010, during a period of institutional growth and the development of a 12 million dollar endowment fund.

Don Orlich's (Education, Emeritus 1999) new book entitled "The School Reform Landscape: Fraud, Myth, and Lies" (cover shown at right) was released February 25, 2013. This book takes an "in-depth and controversial look at school reform since the launch of sputnik" and includes critiques of several of the most well-known events, proposals, and policies in the educational arena, including the Sputnik myth, A Nation at Risk, No Child Left Behind, and the lies of the Common Core State Standards initiative. Don has been a member of the Emeritus Society at Washington State University since 1999, and received the Emeritus Society Legacy of Excellence Award in 2012.

NEW EMERITI:

Every new semester brings new emeriti!

So far this semester, we have had several new members join the Emeritus Society:

DAVID A. SCLAR,
B.Pharm., Ph.D.
Pharmacotherapy

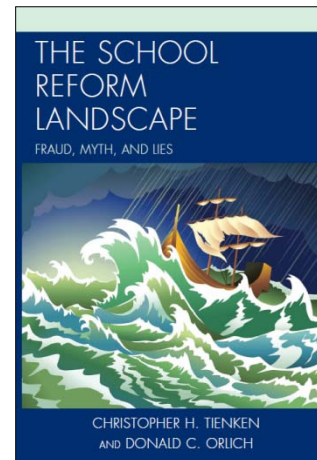
MICHAEL J. KALLAHER
Mathematics

DON MATTESON
Chemistry

ROBERT MIFFLIN
Mathematics

BECKY CARDELL
Nursing

RUTH BINDLER
Nursing



The cover of Don Orlich's newest book

Get to Know Your Fellow Emeriti - Continued

Muriel Oaks (CDPE, Emeritus 2010) and her husband **Merrill** (Education, Emeritus 2002) just returned from an interesting trek. They spent a week in the northern Yucatan peninsula, and then took buses from Cancun to Panama City, with stops of several days each in Guatemala City, San Salvador, Managua, and San Jose, with a final two weeks in Panama City -- 2000 miles in all. Merrill had spent two years in Panama in the army in the mid-60's, and was interested to see what changes have been made in that time. The changes are tremendous, and it's a very interesting place to visit. The Canal is being expanded with new and significantly larger locks, scheduled to be open and able to handle supertankers and other large ships in three more years. They are pictured to the right enjoying some sun near Panama.

Ruth Bindler (Nursing, Emeritus 2012) is new to this organization, just having retired in fall semester. She has been a faculty member in the College of Nursing for 38 years. She and her husband have been married for 40 years this August in 2013. They have a daughter, Dana (WSU 2005) and husband Brady McMacken (WSU 2005) and a son, Ross (WSU 2009, and WSU Pharm D candidate 2014). She continues to publish a variety of pediatric nursing texts with Pearson Education, nationally and internationally. Her PhD is from WSU in Human Nutrition in 2001, and her research passion was and remains lowering the risk of obesity and diabetes risk in youth.

After retirement this fall, Ruth and her husband made their way to Arizona where they have a "snowbird" home at Pebble Creek in Goodyear outside of Phoenix. They miss WSU until they return north in May to look forward to meeting more Cougs in the area.

Norm Whittlesey (Economics, Emeritus 1996) and **Walt Butcher** (Economics, Emeritus 1997) have recently spent a lot of time developing material for the State

legislature that they hope will lead to a more rational use of State capital spending. The focus of their efforts has been on proposed irrigation development in Eastern Washington. To summarize, about \$100 million in state funds have been spent in recent years studying and planning ways to expand irrigated acreage on the eastern edge of the Columbia Basin Project. So far, not a single additional acre has been irrigated. Most recently, the U.S. Bureau of Reclamation and Office of Columbia River have completed a project study (\$15 million for the study) that would provide surface water to the Odessa Subarea to replace a declining supply of groundwater for up to 100,000 acres. The study is now being used to influence Legislative decisions regarding future capital spending for irrigation development in the State.

The recommended project (by the USBR) would supply surface water for about 70,000 acres and cost nearly \$1 billion, most necessarily covered by State bonds. It is a fine example of spending a large amount of public money to provide budget and work to a couple of government agencies and to provide benefits much smaller than the costs for a small number of well positioned individuals and businesses. For a number of reasons, this venture would be a very bad investment of State funds.

Norm and Walt have devoted their efforts to exposing a very bad economic analysis of project economic benefits. They hope that the Legislature will not proceed to fund this project or its components. It has been both interesting and frustrating to deal with State and Federal agencies in the process. For example, after three attempts to obtain necessary information through the Freedom of Information Act, they finally got about two-thirds of that requested. The battle continues as we speak. And, unfortunately many of our Eastern Washington legislators believe in the "Study" and support the project.



Merrill and Muriel Oaks at the San Blas Islands, off the northern coast of Panama

Legacy of Excellence:

Emeritus a pioneer, expert in sociology, criminology, research

From WSU News Tuesday Feb. 19, 2013

PULLMAN, Wash. - Washington State University Professor Emeritus James F. Short, Jr. has earned the 2013 WSU Emeritus Society Legacy of Excellence Award, to be presented during WSU's annual Showcase Celebrating Excellence Recognition Banquet on March 29.

The emeritus award is given for sustained contributions to academia, continued service to the university, community and mankind, and personal accomplishments in retirement that serve as a role model for other retirees.

Short is recognized as a pioneer in the field of juvenile gang behavior beginning in the 1950s; he published a landmark study of Chicago gang violence in 1965. His work on gangs, white collar crime, social control, violence and the sociology of risk and technology has been groundbreaking. He has authored more than 20 books.

Since retirement from WSU in 1997, Short has been an emeritus professor only in the most technical sense, says one of his nominators. He continues to contribute to the sociology department, university and internationally in the disciplines of sociology and criminology. He conducts research, mentors graduate students and publishes on violence, violence avoidance and the social aspects of risk.

He has remained active in projects and organizations in retirement, including: president of the American Society of Criminology; advisory board member for the Social Science Research Council task force on Hurricane Katrina; consultant to the national Crime Victim Survey Committee and member of the Committee on Lethal School Violence and the Committee on Law and Justice – all appointed by the National Academy of Science's National Research Council; and guest editor of the May 2005 issue of the *Journal of Contemporary Criminal Justice*.

Short is a fellow of the American Association for the Advancement of Science. He is a past president of the American Sociological Association and past editor for the *American Sociological Review*. He received the WSU President's Award for Lifetime Service in 2006. In 2009, a WSU

building was rededicated as Wilson-Short Hall in his honor.

He earned his B.A. from Denison University, Ohio, in 1947 and his M.A. (1949) and Ph.D. (1951) from the University of Chicago. He joined the Washington State College sociology faculty in 1951. He served as dean of the graduate school 1964-1968 and was founding director of WSU's Social and Economic Sciences Research Center (SESRC).

Reservations for the banquet are being accepted at the Showcase [website](#), through March 20. In addition to the banquet, WSU Showcase includes the Distinguished Faculty Address (March 28); the Academic Showcase display of faculty, staff and student work (March 29); and SURCA, the Showcase for Undergraduate Research and Creative Activities (March 29).

James F. Short, Jr.
Legacy of Excellence
Award 2013



The Legacy of Excellence Reception sponsored by the Emeritus Society is planned for Wednesday March 27, 2013 at 4pm in Todd 276. This is an open event.



Short (middle) at the 2012 meetings of the American Society of Criminology – Chicago, IL