

PSYCH NEWSLETTER

WSU DEPARTMENT OF PSYCHOLOGY



Psych students,

Soon fall 2024 enrollment will open! Now is a good time to check that all of your holds that prevent your from enrolling are taken care of, your shopping cart is filled with courses that you want to enroll in for fall, and that your shopping cart is validated. Validating your shopping cart checks that you meet the pre-requisites for the courses in your shopping cart.

As a reminder your [psych peer mentors](#) are an excellent resource if you need help enrolling in your courses. You can find them throughout the week in Johnson Tower 201.

Recruitment for the next psych peer mentors is happening now! If you are interested in applying check out page four of this newsletter. The deadline to apply is April 7!

Also make sure you save the date for the [Becoming Competitive for Graduate School](#) and [How to Improve Your Study Habits](#) presentations happening this month!

Those of you interested in a career in clinical psychology or are just curious about the graduate school process are also encouraged to save the date for Midwestern University's Graduate School Info Session on Tuesday, April 23!

NEWSLETTER HIGHLIGHTS

[How to Improve Your Study Habits Presentation](#)

[Becoming Competitive for Graduate School Presentation](#)

[Psych Peer Mentor Application](#)

[Midwestern Clinical Psychology Graduate Program Info Session](#)

[Career Highlight: Music Therapy](#)

Missed any of the past newsletters?
You can find all spring 2024 newsletters here:
psychology.wsu.edu/undergrad/newsletters

Continue reading on page 2

Important Dates & Deadlines



Find the Academic Calendar:
registrar.wsu.edu/academic-calendar/

Asian Pacific Islander Desi American Heritage Month at WSU
Monday, April 1-Tuesday, April 30

Arab American Heritage Month
Monday, April 1-Tuesday, April 30

Sexual Assault Awareness Month
Monday, April 1-Tuesday, April 30

Deadline to register for May 2024 commencement
Wednesday, April 3

Priority registration begins for Fall
Monday, April 8

Deadline to withdraw from a course
Friday, April 12

National Day of Silence
Friday, April 12

Deadline for term withdrawal from WSU
Friday, April 26

Deadline to apply for May 2024 graduation with \$75 late fee
Friday, April 26

Continue reading on page 3

SHOUT OUTS



**Congratulations to
Destinie Walker for
being accepted into
Lewis and Clark's
Graduate School of
Education and
Counseling!**

Students! We want to hear from you!

Were you accepted to a graduate or professional program?

Were you accepted to a summer research program?

Did you earn a scholarship?

Have you won any awards?

If you would like to be featured on this page of the newsletter please reach out to
Cassandra Hernandez at cjhernandez@wsu.edu.

Continue reading on page 4

Become a Peer Mentor for the Psych Department

- ▶ Are you interested in becoming a peer mentor in the psychology department? Peer mentors learn about resources available to students at WSU and guide current and incoming students in the program to resources and experiences that will help them to be successful. As a mentor, you will develop leadership skills, work closely with a faculty member (Dr. Blythe Duell), and learn about the range of experiences available to WSU Psychology students. If you are selected as a peer mentor, you will receive 3 credits of Psych 499 for your successful completion of the program (2 in the fall and 1 in the spring).
- ▶ If you are interested in this opportunity, please apply at the link below by **April 7**.
- ▶ Scan the QR Code for more information and a link to the application.



Continue reading on page 5



PSYCH PEER MENTORS

BECOMING COMPETITIVE FOR GRADUATE SCHOOL

**ZOOM
AND IN
PERSON!**

Join us to learn about some of the many ways you can supplement your resume and make yourself a strong candidate for graduate programs!

**THURSDAY, | JOHNSON
APRIL 18TH AT | TOWER 235C
9:00 AM**

Zoom Meeting ID: 937 8639 2784

Passcode: 429349

Continue reading on page 6



COME LEARN ABOUT...

HOW TO IMPROVE YOUR STUDY HABITS!

A presentation by PSYCH
peer mentors Thomasina
and Johnny

DATE: FRIDAY APRIL
19TH

TIME: 3:30 - 4:30

LOCATION: ZOOM AND
IN JOHNSON TOWER
235C

Meeting ID: 994 2919 8678
Passcode: 387020



Department of Psychology

Franklin College of Arts and Sciences

UNIVERSITY OF GEORGIA



**DEPARTMENT OF PSYCHOLOGY
PRESENTS THE VIRTUAL**

SUMMER UNDERGRADUATE RESEARCH EDUCATION PROGRAM (SUREP)

MAY 21 - JUNE 25, 2024

Tues, Wed, Thurs 5 - 7 pm EST



Learn from experts in the field about their current research & trajectory



Explore how to design a research question to inform viable research project



Create psychology graduate school application materials with graduate students & faculty



Scan to apply!

**Deadlines: April 1 (Priority);
April 15 (Regular)**

For more information
[visit this link](#)

Questions? [Email](#) SUREP
Coordinators

Continue reading on page 8



VIRTUAL PSYCHOLOGY GRADUATE SCHOOL FAIRS



Event Hours: 11am - 3pm Eastern

Review [Testimonials](#) about prior Virtual Fairs.

Presented By:



Psychology Grad School Virtual Fair | April 30, 2024

Prospective Students Meet Psychology Schools Real-time

The Virtual Fair is free to interested students.

Learn more at [Psychology Grad School Virtual Fair \(careereco.com\)](https://careereco.com)



AMERICAN
PSYCHOLOGICAL
ASSOCIATION

APA Psychology *Graduate School Fair*

April 17, 2024
12 - 4 PM ET

WWW.CAREERECO.COM/EVENTS/APA



Learn more at:

[American Psychological Association \(APA\) Psychology Graduate School Fair \(careereco.com\)](https://careereco.com)

Continue reading on page 9



Midwestern University

Clinical Psychology Information Session

Tuesday, April 23rd @ 3:30pm

Location: JT 235-C

To learn more about Midwestern University, please visit our website at:
<https://www.midwestern.edu/academics/degrees-and-programs.xml>

Questions?
Please contact Beka Godsil at rgodsi@midwestern.edu



MIDWESTERN UNIVERSITY
Tomorrow's Healthcare Team

Continue reading on page 10



**Join the Psychology
Department on Friday
April 26, 2024 for the
Undegraduate Research
Symposium!**

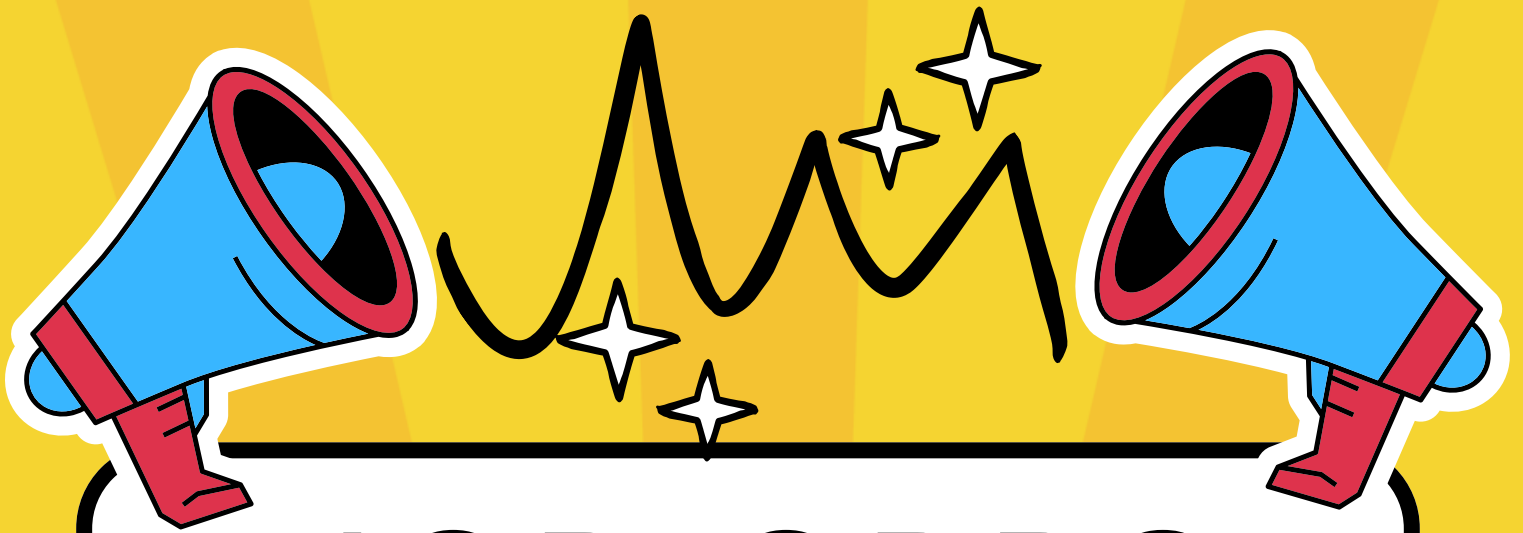
3:00 - 4:00 p.m. at TODD 230: Dr. Leslie Leve will present her research on:

An Intervention for Females Involved in the Juvenile Justice System: Mechanisms of Action and Intergenerational Transmission

4:00 - 5:00 p.m. at CUE Atrium: Undergraduate and postbaccalaureate research poster presentations.

**Keynote Speaker
Dr. Leslie Leve**

Leslie Leve, PhD, is the Lorry Lokey chair in education at the University of Oregon. She also holds a visiting scholar appointment at the University of Cambridge, UK. With more than 230 publications, Leslie's research focuses on child, adolescent, and family well-being using longitudinal studies and intervention designs. She is particularly interested in community-based research with underserved populations and families involved in service systems, including K-12 schools, foster care, juvenile justice, and adoption settings.



JOB OPPS

WSU Athletics is looking for tutors for Summer Bridge 2024.
The program runs from June 17th-July 26th.

Use this link to learn more about the position and to apply-
https://wsu.joinhandshake.com/stu/jobs/8782647?ref=non-split-view-web-app&search_id=25023014-ef69-4342-b493-fbbee5c5992f

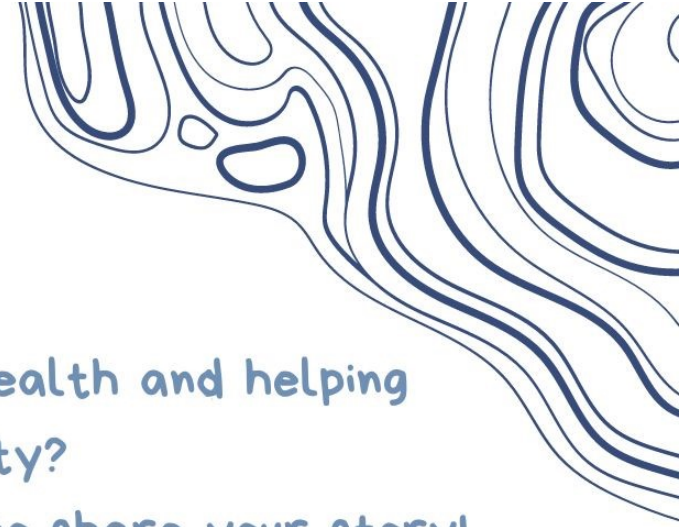
Questions about this position can be directed to Marie Lund-Hansen, marie.lund-hansen@wsu.edu

Find other jobs available on Handshake using this link:
ascc.wsu.edu/resources/handshake-student-employment-portal

Continue reading on page 12



IF YOU'RE READING THIS WSU



Are you interested in discussing mental health and helping others in the WSU community?

Consider submitting a letter for IYRT WSU to share your story!

IYRT WSU is hosting a guided meditation with Dr. Bond, followed by a letter-writing workshop from 4-6 pm on April 18th in Butch's Den in the CUB. All are welcome!



Email @ifyoureadingthiswsu@gmail.com with questions

APPLY FOR ADMISSION TO PSYCH

- Students currently enrolled in Psych 311 are able to apply for admission to Psych before the semester ends (you do not need to wait for your grade to be posted)
- Apply using this link:
psychology.wsu.edu/psychology-major-certification-request
- Once spring grades post you will be admitted as long as you:
 - Earn a C- or higher in Psych 311
 - Have a 2.5 or higher cumulative WSU GPA
 - 30 completed credit hours
- You are not notified when you are admitted to psych. Check your academic requirements in myWSU to verify that you have been admitted to psych
- Once admitted to your primary major you may reach out to your minor/additional major advisor to request to have your minor/additional major added to your plan

CONTINUE READING ON PAGE 14

SUMMER SESSION

2024

Why not take one or two of these psych courses this summer?

- A chance to take a course not taught in Pullman
- Get ahead or catch up on credits
- Take an online course
- Complete one or more of your graduation requirements

Psych 105

Psych 110

Psych 210

Psych 230

Psych 265

Psych 311

Psych 312

Psych 320

Psych 321

Psych 324

Psych 328

Psych 333

Psych 348

Psych 350

Psych 361

Psych 363

Psych 372

Psych 384

Psych 401

Psych 412

Psych 440

Psych 464

Psych 470

Psych 490

Psych 491

summer.wsu.edu

CONTINUE READING ON PAGE 15

MUSIC THERAPY



Music therapy is the clinical and evidence-based use of music interventions to accomplish individualized goals within a therapeutic relationship. Music therapy is an established health profession in which music is used within a therapeutic relationship to address physical, emotional, cognitive, and social needs of individuals.

CAREER OPTIONS

Board Certified Music Therapist
Director of Music Therapy
Music Therapist

FOR MORE INFO VISIT

www.onetonline.org
www.bls.gov
www.apa.org
www.musictherapy.org

GRADUATE PROGRAMS

SCAN ME



MINOR/ADDITIONAL MAJOR IDEAS

Music
Comparative Ethnic Studies
Human Development
Women's, Gender, and
Sexuality Studies