

PSYCH NEWSLETTER

WSU DEPARTMENT OF PSYCHOLOGY



Psych students.

Welcome to week 5 of the spring semester. In honor of it being Black History Month we have included information inside this week's newsletter to help you learn about some of the contributions that Black Psychologists have made to the field of psychology.

Tomorrow (2/6) you have a chance to polish your resume and interview skills in a workshop hosted by the psych peer mentors.

If you need to add a course or two to your spring schedule inside you will find a list of late start courses that you are still able to enroll in for spring.

This week we are also highlighting a post-bacc program in applied psych and an MS in Experimental Psych graduate program.

We also encourage you to attend the various career expos happening this month and save the date for our next industry speaker, Sami Lesnek, on February 27!

Happy reading!

NEWSLETTER HIGHLIGHTS

February 1-March 1 is Black History Month

Path to Success In Psychology: Industry Speakers

Career Expo

UT Austin Post Bacc in Applied Psychology

Late Start Courses

Study abroad scholarship

SURCA

Career Highlight: Health Psychology

Missed any of the past newsletters?
You can find all spring 2024 newsletters here:
<https://psychology.wsu.edu/undergrad/newsletters/>

Continue reading on page 2

Important Dates & Deadlines



Find the Academic Calendar:
registrar.wsu.edu/academic-calendar/

Black History Month
February 1-March 1

Last day to drop a course without record
Tuesday, February 6

President's Day-Class Holiday All University Offices open
Monday, February 19

Midterm Grades available
Wednesday, February 28

Last Day to apply for May 2024 graduation without a late fee
Friday, March 1

Priority registration begins for summer
Monday, March 4

Continue reading on page 3



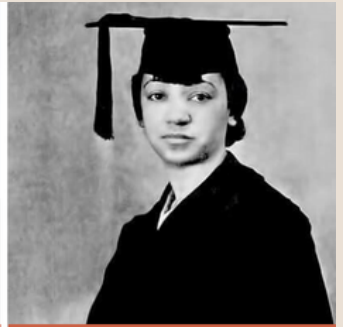
Beverly Daniel Tatum



Francis Cecil Sumner



Robert Lee Williams II



Inez Beverly Prosser



Mamie Phipps Clark and
Kenneth Bancroft Clark



Jennifer Eberhardt



Joseph L. White

February 1–March 1 is: Black History Month



In honor of Black History Month we want to highlight some of the Black Psychologists who have made significant contributions to the field of Psychology.

8 Black Psychologists Who Made History

<https://guildservices.org/blog/8-black-psychologists-who-made-history/>

I Am Psyched! for Black History Month: Watch three inspiring women discuss what led them to pursue psychology as a career, dealing with racism and sexism, and what life lessons they would share with the next generation of women and girls going into the field. Follow this link to watch the video:

[https://www.youtube.com/watch?](https://www.youtube.com/watch?v=FUd8FuB3dkl&list=PLxf85IzktYWJNFY4NyMM4mb31-dwt4QOW&t=3s)

[v=FUd8FuB3dkl&list=PLxf85IzktYWJNFY4NyMM4mb31-dwt4QOW&t=3s](https://www.youtube.com/watch?v=FUd8FuB3dkl&list=PLxf85IzktYWJNFY4NyMM4mb31-dwt4QOW&t=3s)

The Association of Black Psychologists (ABPsi), <https://abpsi.org/>

Continue reading on page 4



STILL LOOKING FOR A SPRING CLASS?

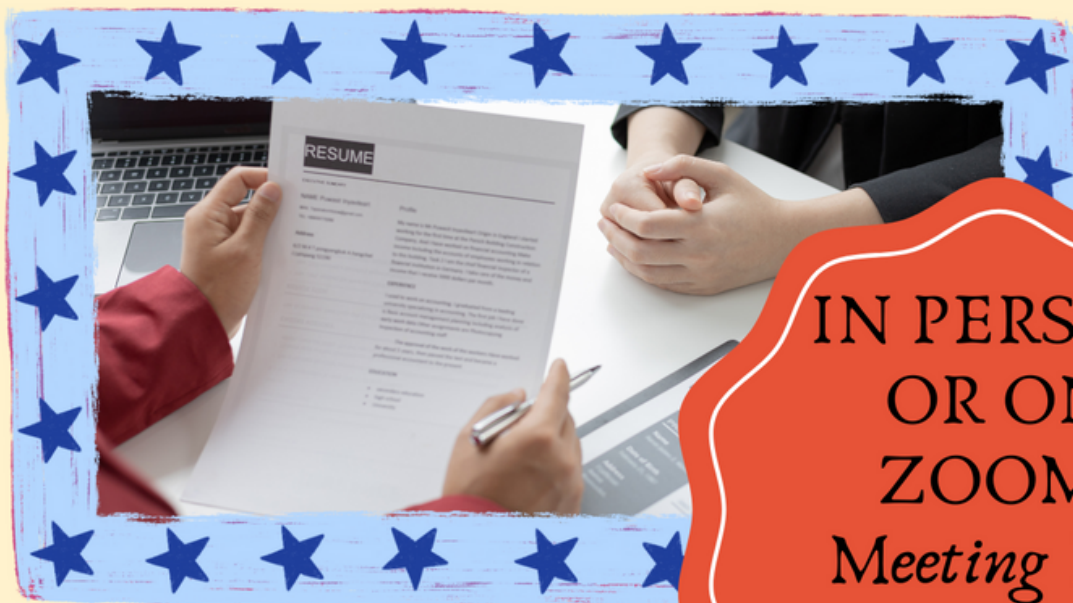
CHECK OUT THESE LATE START COURSES

- Univ 104 (Class # 9669), 2 credits
- Univ 250 (Class # 8035), 1 credit
- Univ 301 (Class # 9718), 1 credit
- HBM 375 (Class # 9260), 3 credits
- CAS 400 (Class # 16413), 1 credit
- COMJOUR 275 (Class # 9375), 1 credit
- Kin_Actv (several sections), 1 credit
- Kines 138 (Class # 9510), 1 credit

Continue reading on page 5

PSYCH PEER MENTORS

INTERVIEW Skills & TIPS



IN PERSON
OR ON
ZOOM!

Meeting ID:
987 003 7275

*February 6th from 3:30-4:30
Johnson Tower Room 235C*

COME JOIN US TO LEARN
ABOUT AND PREPARE FOR
JOB AND GRADUATE
INTERVIEWS!

CONTINUE READING ON PAGE 6

GRADUATE SCHOOL SPOTLIGHT

GEORGIA SOUTHERN'S

EXPERIMENTAL PSYCHOLOGY MS

Program Highlights:

- Currently accepting applications for fall 2024 admission
- Application fee is FREE in February
- Offers a 2-year residential program with careful one-on-one matching of students with faculty members for research and professional development mentorship
- Optional teaching emphasis to help prepare our students to teach at the college level.
- Faculty accepting students in the following areas: Developmental, Social & Personality, Decision Making and Behavioral Economics, Cognitive, Clinical, and Experimental
- Priority deadline is February 15 and final deadline is April 1.
- To learn more and apply visit <https://www.georgiasouthern.edu/cbss/psychology/ms-programs/ms-experimental-psychology/>

CONTINUE READING ON PAGE 7

UT AUSTIN POST BACCALAUREATE PROGRAM IN APPLIED PSYCHOLOGY

Program highlights:

- Currently recruiting graduating seniors who want to use science and technology to make a positive impact on the world
- Year long research program aimed at improving focus and emotional resilience of teens across the country
- Get deeply involved in applied research that is funded by the U.S. Dept. of Education
- Co-author at least one peer-reviewed scientific article
- Choose a post-bac specialization that aligns with your career aspirations
- Receive career mentorship and extensive support when applying to jobs or graduate school
- Work from your own fully-outfitted private office within the lab
- Help provide tens of thousands of students with evidence-based mindfulness training
- Post-bacc programs are a great way to prepare for graduate school!
- Learn more at <https://bit.ly/postbac2024>

WSU PSYCHOLOGY ADVISING PRESENTS:

Path to Success in Psychology

INDUSTRY SPEAKER SERIES

CONNOR HARTLEY

Sports Psychology-Mental Health Clinician
Washington State University

COULDN'T ATTEND?

You can watch a recording of
the presentation by scanning
the QR code below:



SAMI LESNEK

Applied Behavior Analysis-
Behavior Technician
Connections Behavior Planning &
Intervention

FEBRUARY 27

4PM-5:30PM

ZOOM

MEETING ID: 918 1142 8551

Questions?

Contact your academic advisor

WHY ATTEND PATH TO SUCCESS
PRESENTATIONS?

- Expand your career options in psychology
- Receive career advice from experienced professionals
- Gain insider knowledge and tips for building up your resume
- Build your networking skills

CONTINUE READING ON PAGE 9

Summer Research Coordinator Positions at Drexel University WELL Center-Graduating seniors are encouraged to apply!!!!

Applicants are being sought for several full-time research coordinator positions in the Drexel University Center for Weight, Eating and Lifestyle Science (WELL Center). The start date for the positions is Summer 2024. The positions are under the direction of Drs. Evan Forman, Meghan Butryn, Adrienne Juarascio, and Erica LaFata.

The research coordination roles include overall coordination of all study elements; implementing an advertisement/recruitment plan; refining and implementing the assessment protocol; scheduling and conducting participant screening and clinical assessments; managing data and databases; maintaining contact and approvals with NIH and IRB; collecting data with wearable sensors.

To apply, please take the following two steps: (1) Complete an official application. (2) Complete a supplemental information form. Applications are reviewed as they arrive, with the intent to begin interviews in February 2024, so please apply as soon as possible.

The Center is staffed by faculty, post-doctoral fellows, research coordinators, clinical psychology Ph.D. students, and undergraduate students, providing an environment rich in intellectual stimulation and mentorship. The position represents an excellent opportunity to gain experience in obesity/eating disorders clinical research and to be trained in both research and clinical tasks. **This position provides excellent preparation for individuals who wish to pursue graduate study in clinical psychology or a related area.** Opportunities also will be available, as desired, for grant application preparation, research diagnostic assessment training, additional data analysis, and preparation of poster presentations and/or manuscripts related to the projects. Coordinators also have the opportunity to be exposed to and, in many cases, involved in intervention delivery.



2024 NEBRASKA SUMMER RESEARCH PROGRAM

10 weeks. Research experience.
Scholarly community. Grad-school ready.

This intensive summer research experience provides mentoring and research experiences while allowing scholars to preview graduate school life. Students with a strong interest in graduate programs are encouraged to apply, as are those from populations traditionally underrepresented in graduate education.

- Applied Plant Systems
- Applied Unmanned Systems
- Beneficial Insects
- Bioenergy Systems
- Biomedical Engineering
- Chemistry
- Crop-to-Food Innovation
- Digital Legal Research Lab
- Engineering Education Research
- Health Equity
- Nanotechnology Coordinated Infrastructure
- Quantum Materials
- Redox Biology
- Sustainability of Civil Infrastructure
- Virology

AVERAGE STIPEND RANGE

\$5,000-\$6,000

PROGRAM DURATION

June 3, 2024 - August 7, 2024

APPLICATION OPENS

November 15, 2023

The benefits:

Stay in **suite-style housing**, enjoy an **on-campus meal plan**, and have **travel costs covered**.

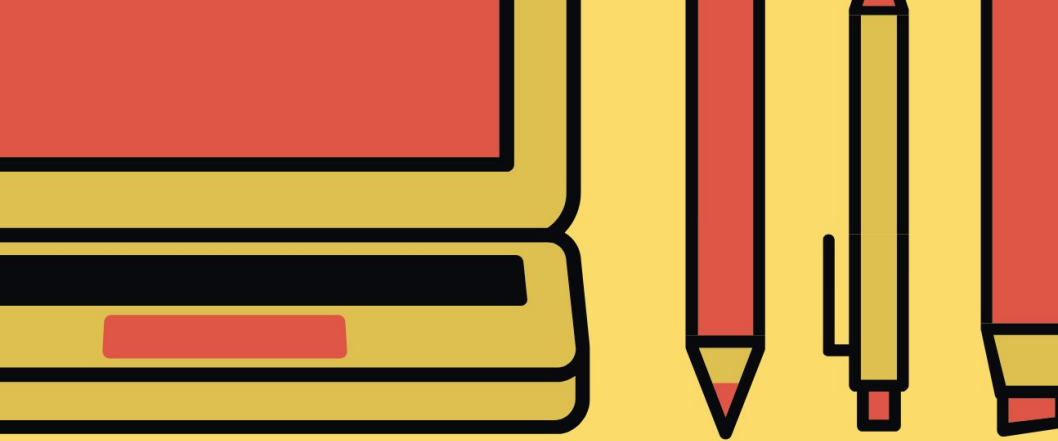
Attend workshops for data visualization, scientific writing, creating a **research poster**, and more.

Visit the **Omaha Henry Doorly Zoo**, rent bikes to **explore Lincoln**, attend a **Lincoln Saltdogs** baseball game, enjoy a day at the lake, and more.

APPLY AT

<https://www.unl.edu/summerprogram>





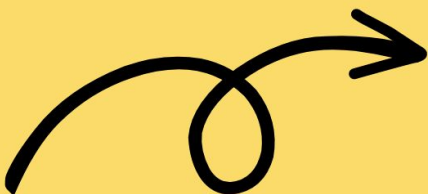
**THE ACADEMIC SUCCESS AND CAREER CENTER
(ASCC) PRESENTS:**

FREE CAMPUS- WIDE TUTORING

*Available in the Stephenson and Streit Residence
halls, other spaces across campus, and virtually
through Zoom*

**ALL SUBJECTS AND
DISCIPLINES, INCLUDING
MATH AND SCIENCE**

**Follow the QR code to access the schedule of our
trained and professionally accredited peer tutors
across campus:**



\$250 SCHOLARSHIP TOWARD YOUR STUDY ABROAD!

Boost your chances for funded overseas studies!

3 Workshops

+1 Writing Center appointment

\$250 award for study abroad



SCAN HERE FOR ELIGIBILITY REQUIREMENTS
AND WORKSHOP DATES AND TIMES



The Distinguished Scholarships Program (DSP) is offering virtual and in-person workshops (Jan. 31-Feb. 25) on applying for Gilman Scholarships (nationally competitive study abroad awards). Attendance at these, plus writing tasks and a Gilman application, can qualify you for a \$250 DSP award toward your study abroad.



WASHINGTON STATE UNIVERSITY
**Distinguished Scholarships
Program**

Questions? DistinguishedScholarships@wsu.edu

Continue reading on page 13

SURCA

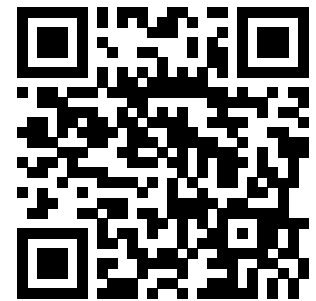
SHOWCASE FOR UNDERGRADUATE
RESEARCH AND CREATIVE ACTIVITIES

Conducting research? Pursuing scholarship?
Involved in creative activities?

SHOWCASE YOUR WORK AT SURCA 2024!

Deadline for presenters' applications is
Tues, Feb 20, 2024 at 11:59 p.m.

**SURCA 2024 is on March 25 in
the CUB Senior Ballroom.**



Apply and learn more at [SURCA.wsu.edu /participants](https://SURCA.wsu.edu/participants)



WASHINGTON STATE UNIVERSITY
Office of
Undergraduate Research

WSU CAREER

EXPO

Communication
Arts
Science
Education

Virtual Expo

on Handshake

Tuesday, February 13, 2024

11:00 AM - 2:00 PM PST



REGISTER
T O D A Y
on
HANDSHAKE

Meet with employers looking to hire students within communication, arts, science, and education majors!



WASHINGTON STATE UNIVERSITY
Academic Success and Career Center

Continue reading on page 15

WSU CAREER
EXPO PREP *Series*
 WASHINGTON STATE UNIVERSITY
Academic Success and Career Center

JAN
11

Coug's Guide to the Career Expo
12:30pm - 1:00pm | Virtual

JAN
17

Professional Headshot & Coug's Guide to the Expo
1:00pm - 3:00pm | ASCC (Lighty 180)

JAN
18

Resume Pop-Up & Expo Ask Me Anything
5:00pm - 7:00pm | Virtual

JAN
23

Resume Pop-up & Ask Me Anything
11:00am - 1:00pm | Disabled Student Center, Washington Building 223

JAN
23

Coug's Guide to the Career Expo
4:00pm - 4:30pm | International Student Center

JAN
24

Landing Your Internship at the Expo
4:10pm - 5:00pm | ASCC (Lighty 180). Hybrid

JAN
24

A Veteran Coug's Guide to the Career Expo
12:10pm - 1:00pm | ASCC (Lighty 180)

JAN
25

Get Noticed: Optimizing Your LinkedIn Profile
4:10pm - 5:00pm | ASCC (Lighty 180). Hybrid

JAN
29

Personal Branding with Fisher Investment
4:10pm - 5:00pm | ASCC (Lighty 180). Hybrid

JAN
30

Ask the Experts: Federal Jobs and Resumes
12:10pm - 1:00pm | ASCC (Lighty 180). Hybrid

JAN
30

Using Chat GPT to Excel at the Expo
4:10pm - 5:00pm | ASCC (Lighty 180). Hybrid

JAN
31

Networking with Top Employers
12:10pm - 1:00pm | ASCC (Lighty 180). Hybrid

JAN
31

Breaking Down Interview Nerves
5:30pm - 6:30pm | ASCC (Lighty 180). Hybrid

FEB
1

Connect with Employers Hiring All Majors
4:10pm - 5:00pm | ASCC (Lighty 180). Hybrid

FEB
2

Resume Pop-up & Ask Me Anything
11:00am - 1:00pm | First-Generation Student Center

FEB
2

Coug's Guide to the Career Expo
2:10pm - 3:00pm | Virtual

FEB
5

Virtual EXPO
11:00am - 2:00pm | Handshake

FEB
5

Resume Cafe
2:00pm - 4:00pm | ASCC (Lighty 180)

FEB
6

In-Person EXPO
11:00am - 3:00pm | Beasley Coliseum

FEB
7

Veterans Center Networking Lunch
12:10pm - 1:00pm | Commons 210

FEB
7

You Went to the Expo. Now What?
4:10pm - 5:00pm | ASCC (Lighty 180). Hybrid

FEB
13

CASE EXPO
11:00am - 2:00pm | Handshake

FEB
13

Thriving Authentically: Ascending Industry as LGBTQ
4:00pm - 5:30pm | LGBTQ Center. Hybrid

FEB
15

You Interviewed, Now What?
5:30 pm - 6:30pm | ASCC (Lighty 180). Hybrid



REGISTER TODAY
on
HANDSHAKE

HEALTH PSYCHOLOGY



Health Psychologists make important contributions to the well-being of their patients by incorporating psychological theory and research to develop methods to assist patients in maintaining healthy lifestyles. They also help patients manage chronic disease and avoid preventable diseases, and provide rehabilitative services to persons with acute injuries and chronic diseases.

CAREER OPTIONS

Psychologists in this field are engaged in academic research, professional practice, and education and training across an array of community, clinical, occupational, and acute health care settings

FOR MORE INFO VISIT

www.onetonline.org
www.bls.gov
www.apa.org
www.societyforhealthpsychology.org

GRADUATE PROGRAMS

SCAN ME



MINOR/ADDITIONAL MAJOR IDEAS

Health & Society
Sociology
Human Development
Human Biology