

# PSYCH NEWSLETTER

## WSU DEPARTMENT OF PSYCHOLOGY



Psych students,

Hopefully your spring semester is off to a great start. One key to having a successful semester is to use your resources. Inside you will find resource guides that highlight some of the resources that are available to WSU students.

Speaking of resources the psychology department is fortunate to have the help of our Psych Peer Mentors. Their spring availability is now posted and you can stop by Johnson Tower 201 anytime you would like to meet with a peer mentor. And don't miss the Meet Your Psych Peer Mentor event on January 31!

Inside you will also find opportunities to participate in undergrad research. The McNair Scholars program is now accepting applications. This program helps qualified students who want to pursue graduate education (Master's or PhD). You can also learn about an excellent study abroad opportunity and internship.

On January 30 you can learn about the field of sports psychology from the perspective of mental health clinician, Connor Hartley, who works with WSU athletes. Graduating seniors might be interested in the summer research coordinator position at Drexell University. All students are encouraged to attend the Career Expo that will take place in February and prep events leading up to the expo.

Lastly don't forget that the WSU Scholarship Application deadline is quickly approaching on January 31.

Happy reading!

## NEWSLETTER HIGHLIGHTS

Psych Peer Mentors page 5

---

Summer Research Coordinator Position page 9

---

Path to Success In Psychology: Industry Speakers page 10

---

Career Expo page 11-12

---

McNair Scholars Program page 13

---

Douglass-O'Connell Global Internship page 16-20

---

SURCA page 21-22

---

Career Highlight: Forensic Psychology page 23

Missed any of the past newsletters?  
You can find all spring 2024 newsletters here:  
<https://psychology.wsu.edu/undergrad/newsletters/>

---

Continue reading on page 2

# Important Dates & Deadlines



Find the Academic Calendar:  
[registrar.wsu.edu/academic-calendar/](http://registrar.wsu.edu/academic-calendar/)

---

Last day to change enrollment from letter grades to pass/fail  
*Friday, January 26*

---

*Deadline to complete academic improvement conversation #1 for  
reinstatement  
Friday, January 26*

---

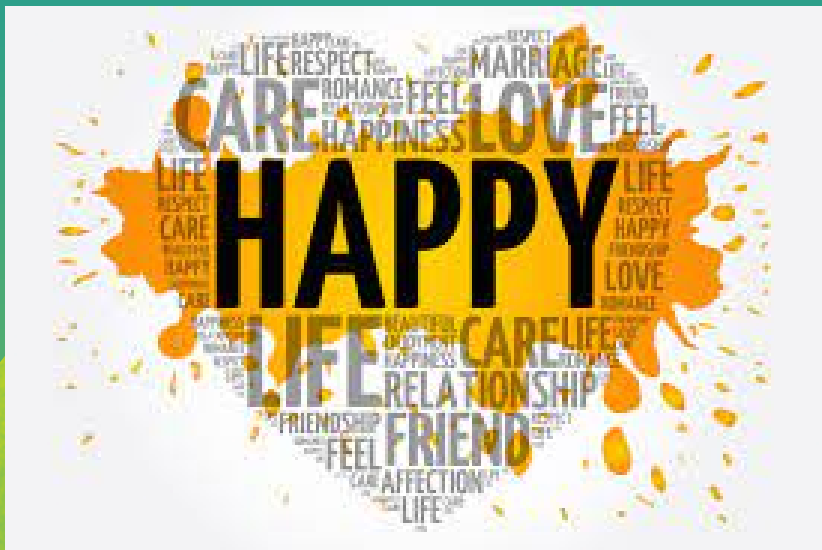
**WSU General Scholarship Application Deadline**  
*Wednesday, January 31*

---

Last day to drop a course without record  
*Tuesday, February 6*

Continue reading on page 3

# Announcements



Please take this survey to help the psych department gauge interest in a new psych course being developed. Click on the image to the left to open the survey.

## The Healthy Start Lab

PI: Dr. Chang Liu  
Email: [c.liu@wsu.edu](mailto:c.liu@wsu.edu)

### We are recruiting RAs

- Work on the “*Stress and Wellbeing During the Transition to College Among Minority Students*” project (1) and the “*Parent-Offspring Adoption Study*” project (2).
- Main tasks: Participant recruitment, running lab visits, configuring smartwatches, and presenting research projects.
- Research credits, such as Psych 498 (1-4 credits), will be provided.
- If you are interested in working with us, please contact Dr. Chang Liu ([c.liu@wsu.edu](mailto:c.liu@wsu.edu)).

Continue reading on page 4

# DEPARTMENT OF PSYCHOLOGY ADVISING

## Academic Advising Description/Definition:

*Academic advising is a collaborative educational process whereby students and their advisors are partners in meeting the essential learning outcomes, ensuring student academic success, and outlining the steps for achievement of the student's personal, academic and career goals. This advisor/student partnership requires participation and involvement of both the advisor and the student as it is built over the student's entire educational experience at WSU.*

## Chioma Heim

**Last Name A-D**

**Office:** JT 218

**Email:** chioma.a.heim@wsu.edu

**Virtual Drop In Hours:**

Friday 1PM - 4PM

Scan the QR code to book an appointment



## Chanelle Denman

**Last Name E-K**

**Office:** JT 202

**Email:** chanelle.denman@wsu.edu

**Virtual Drop In Hours:**

Wednesday 2PM—4PM

Scan the QR code to book an appointment



## Cassandra Hernandez

**Last Name L-R**

**Office:** JT 204

**Email:** cjhernandez@wsu.edu

**Virtual Drop In Hours:**

Monday 2PM - 4PM

Scan the QR code to book an appointment



## LaToya Sutton

**Last Name S-Z**

**Office:** JT 203

**Email:** jennifer.sutton@wsu.edu

**Available by Appointment Only**

Scan the QR code to book an appointment



### **Advisee Responsibilities—**

#### **What Is Expected of You**

- . Schedule regular appointments with your advisor
- . Come prepared to each appointment with questions and materials for discussion
- . Keep a personal record of your progress toward meeting your goals
- . Complete all recommendations from your advisor
- . Become knowledgeable about college programs, policies and procedures
- . Accept responsibility for decisions made that impact degree completion

### **Advisor Responsibilities—**

#### **What Is Expected of Advisors**

- . Understand and effectively communicate the curriculum, graduation requirements, and university policies and procedures
- . Encourage and guide students as they define and develop realistic goals
- . Be accessible for meeting with advisees via office hours
- . Assist students in gaining decision making skills and in assuming responsibility for their educational plans and achievements
- . Maintain confidentiality in accordance with FERPA guidelines



# Psych Peer Mentors Johnson Tower 201

---

The mentors are knowledgeable about departmental opportunities, navigating the university, study skills, and general tips for being successful students. They also offer tutoring for psychology courses. For a list of their office hours visit the site below.

<https://psychology.wsu.edu/undergrad/mentoring-program/>

CONTINUE READING ON PAGE 6

**MEET YOUR**

**PSYCHPEER**

**MENTOR**

**JANUARY 31, 2024**

**Get to know us!**



**Get class or advising help!**



**Learn about opportunities!**



**FREE PIZZA!!**



**Johnson Tower,  
Room 201**

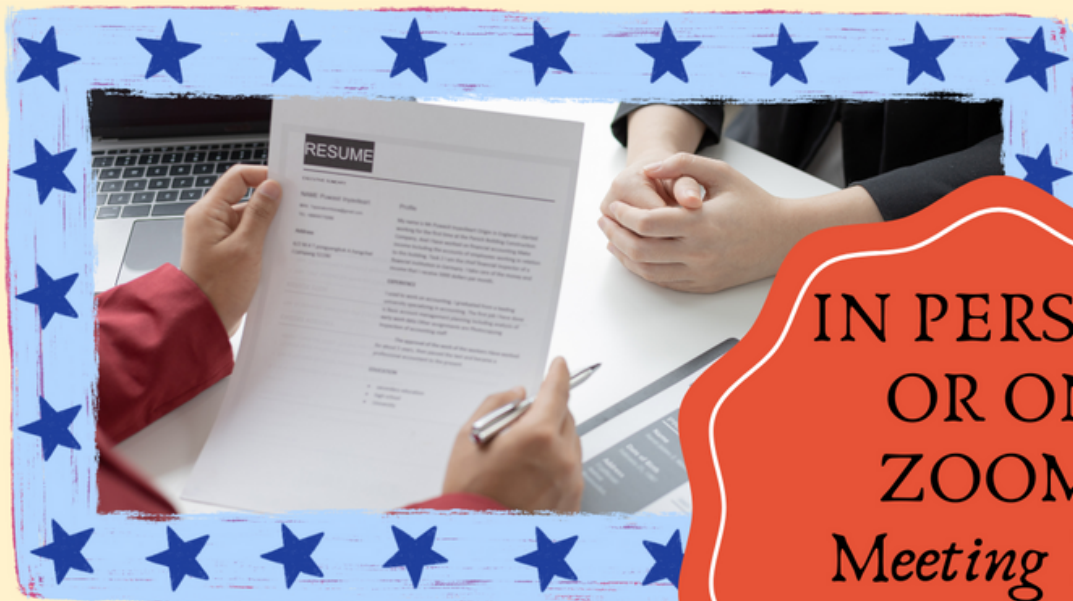


**From 2pm  
to 5pm!**

**CONTINUE READING ON PAGE 7**

PSYCH PEER MENTORS

# INTERVIEW Skills & TIPS



IN PERSON  
OR ON  
ZOOM!

Meeting ID:  
987 003 7275

*February 6th from 3:30-4:30  
Johnson Tower Room 235C*

COME JOIN US TO LEARN  
ABOUT AND PREPARE FOR  
JOB AND GRADUATE  
INTERVIEWS!

CONTINUE READING ON PAGE 8



## CONSIDERING A CAREER IN MENTAL HEALTH? Check out these FREE training opportunities

### Campus Connect

This 2-hour suicide prevention training program is offered free of charge for all WSU staff and students. Participants learn:

- Statistics and facts about college student suicide
- How to ask if someone is feeling suicidal
- Appropriate referrals
- Active listening, communication, and relationship building skills

Use this link to sign up for this training program:

[https://wsu.co1.qualtrics.com/jfe/form/SV\\_aW8G5NdpCpsv6wB](https://wsu.co1.qualtrics.com/jfe/form/SV_aW8G5NdpCpsv6wB)

### Mental Health First Aid

Participants in this training learn about symptoms, crisis response, and active listening skills to support someone who is experiencing a mental health disorder such as:

- Depression and anxiety
- Trauma
- Psychosis
- Substance misuse

Mental Health First Aid is free for WSU Pullman, Global, and Vancouver campus students.

Use this link to sign up for this training program:

[https://wsu.co1.qualtrics.com/jfe/form/SV\\_3yJeUoefx9F2kWF](https://wsu.co1.qualtrics.com/jfe/form/SV_3yJeUoefx9F2kWF)

CONTINUE READING ON PAGE 9



# Summer Research Coordinator Positions at Drexel University WELL Center-Graduating seniors are encouraged to apply!!!!

Applicants are being sought for several full-time research coordinator positions in the Drexel University Center for Weight, Eating and Lifestyle Science (WELL Center). The start date for the positions is Summer 2024. The positions are under the direction of Drs. Evan Forman, Meghan Butryn, Adrienne Juarascio, and Erica LaFata.

The research coordination roles include overall coordination of all study elements; implementing an advertisement/recruitment plan; refining and implementing the assessment protocol; scheduling and conducting participant screening and clinical assessments; managing data and databases; maintaining contact and approvals with NIH and IRB; collecting data with wearable sensors.

**To apply, please take the following two steps: (1) Complete an official application. (2) Complete a supplemental information form. Applications are reviewed as they arrive, with the intent to begin interviews in February 2024, so please apply as soon as possible.**

The Center is staffed by faculty, post-doctoral fellows, research coordinators, clinical psychology Ph.D. students, and undergraduate students, providing an environment rich in intellectual stimulation and mentorship. The position represents an excellent opportunity to gain experience in obesity/eating disorders clinical research and to be trained in both research and clinical tasks. **This position provides excellent preparation for individuals who wish to pursue graduate study in clinical psychology or a related area.** Opportunities also will be available, as desired, for grant application preparation, research diagnostic assessment training, additional data analysis, and preparation of poster presentations and/or manuscripts related to the projects. Coordinators also have the opportunity to be exposed to and, in many cases, involved in intervention delivery.

CONTINUE READING ON PAGE 10

WSU PSYCHOLOGY ADVISING PRESENTS:

# Path to Success in Psychology

## INDUSTRY SPEAKER SERIES

### CONNOR HARTLEY

Sports Psychology-Mental Health Clinician  
Washington State University

JANUARY 30  
4PM - 5:30PM  
ZOOM

MEETING ID: 931 2752 6979

### SAMI LESNEK

Applied Behavior Analysis-  
Behavior Technician  
Connections Behavior Planning &  
Intervention

FEBRUARY 27  
4PM-5:30PM  
ZOOM

MEETING ID: 918 1142 8551

Questions?

Contact your academic advisor

WHY ATTEND PATH TO SUCCESS  
PRESENTATIONS?

- Expand your career options in psychology
- Receive career advice from experienced professionals
- Gain insider knowledge and tips for building up your resume
- Build your networking skills

CONTINUE READING ON PAGE 11

# WSU CAREER

# EXPO

**C**ommunication  
**A**rts  
**S**cience  
**E**ducation

**Virtual Expo**

on Handshake

Tuesday, February 13, 2024

11:00 AM - 2:00 PM PST



**REGISTER**  
**T O D A Y**  
on  
**HANDSHAKE**

Meet with employers looking to hire students within communication, arts, science, and education majors!



WASHINGTON STATE UNIVERSITY  
Academic Success and Career Center

Continue reading on page 12

WSU CAREER **EXPO** PREP *Series*  
 WASHINGTON STATE UNIVERSITY  
 Academic Success and Career Center

**JAN 11**  
 Coug's Guide to the Career Expo  
 12:30pm - 1:00pm | Virtual

**JAN 17**  
 Professional Headshot & Coug's Guide to the Expo  
 1:00pm - 3:00pm | ASCC (Lighty 180)

**JAN 18**  
 Resume Pop-Up & Expo Ask Me Anything  
 5:00pm - 7:00pm | Virtual

**JAN 23**  
 Resume Pop-up & Ask Me Anything  
 11:00am - 1:00pm | Disabled Student Center, Washington Building 223

**JAN 23**  
 Coug's Guide to the Career Expo  
 4:00pm - 4:30pm | International Student Center

**JAN 24**  
 Landing Your Internship at the Expo  
 4:10pm - 5:00pm | ASCC (Lighty 180). Hybrid

**JAN 24**  
 A Veteran Coug's Guide to the Career Expo  
 12:10pm - 1:00pm | ASCC (Lighty 180)

**JAN 25**  
 Get Noticed: Optimizing Your LinkedIn Profile  
 4:10pm - 5:00pm | ASCC (Lighty 180). Hybrid

**JAN 29**  
 Personal Branding with Fisher Investment  
 4:10pm - 5:00pm | ASCC (Lighty 180). Hybrid

**JAN 30**  
 Ask the Experts: Federal Jobs and Resumes  
 12:10pm - 1:00pm | ASCC (Lighty 180). Hybrid

**JAN 30**  
 Using Chat GPT to Excel at the Expo  
 4:10pm - 5:00pm | ASCC (Lighty 180). Hybrid

**JAN 31**  
 Networking with Top Employers  
 12:10pm - 1:00pm | ASCC (Lighty 180). Hybrid

**JAN 31**  
 Breaking Down Interview Nerves  
 5:30pm - 6:30pm | ASCC (Lighty 180). Hybrid

**FEB 1**  
 Connect with Employers Hiring All Majors  
 4:10pm - 5:00pm | ASCC (Lighty 180). Hybrid

**FEB 2**  
 Resume Pop-up & Ask Me Anything  
 11:00am - 1:00pm | First-Generation Student Center

**FEB 2**  
 Coug's Guide to the Career Expo  
 2:10pm - 3:00pm | Virtual

**FEB 5**  
 Virtual EXPO  
 11:00am - 2:00pm | Handshake

**FEB 5**  
 Resume Cafe  
 2:00pm - 4:00pm | ASCC (Lighty 180)

**FEB 6**  
 In-Person EXPO  
 11:00am - 3:00pm | Beasley Coliseum

**FEB 7**  
 Veterans Center Networking Lunch  
 12:10pm - 1:00pm | Commons 210

**FEB 7**  
 You Went to the Expo. Now What?  
 4:10pm - 5:00pm | ASCC (Lighty 180). Hybrid

**FEB 13**  
 CASE EXPO  
 11:00am - 2:00pm | Handshake

**FEB 13**  
 Thriving Authentically: Ascending Industry as LGBTQ  
 4:00pm - 5:30pm | LGBTQ Center. Hybrid

**FEB 15**  
 You Interviewed, Now What?  
 5:30 pm - 6:30pm | ASCC (Lighty 180). Hybrid



**REGISTER TODAY**  
 on **HANDSHAKE**



# Join the McNair Scholars Program and Prepare for Graduate School!

## WHAT WE DO

The McNair Scholars Program provides an opportunity for academically qualified undergraduates to prepare for **graduate school** and pursue advanced degrees.



*Nikki Cristobal, Ph.D.*  
WSU McNair Alum, 2012  
Ph.D. in Education from the University of Pittsburg

## ELIGIBILITY

- Aspire to earn a **Graduate Degree (Master's and/or Ph.D.)**
- **Income-eligible and first - generation\* college students**
- **OR**
- **Member of an underrepresented group in graduate education.\***
- **U.S. Citizen or Permanent Resident**
- **Minimum cumulative GPA of 3.0**
- **Current WSU undergraduate student**
- **Have at least 4 semesters left before graduation**

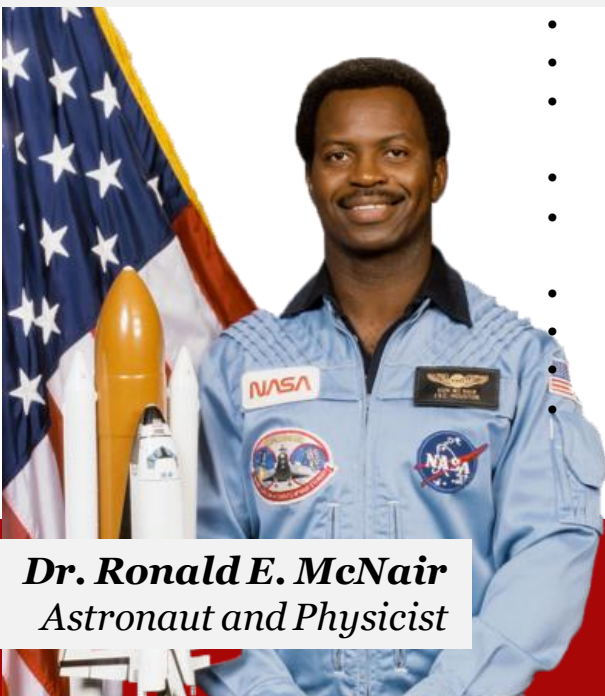


*Florence Adesope, B.S.*  
WSU McNair Alum, 2023  
Attending Graduate School at the University of California, Berkeley

## BENEFITS OF PARTICIPATING

- Opportunities for faculty-led research
- Attend national academic conferences
- Graduate school applications and admissions assistance
- Funding and financial coaching
- Coursework on graduate education, research, self-care, time-management, and graduate application process
- Mentoring and networking
- Summer Research Programming
- Academic coaching and advising
- Social and Cultural Activities

*Areli Orozco*  
WSU McNair Scholar  
Psychology Major



**Dr. Ronald E. McNair**  
Astronaut and Physicist

*Apply now on our website!*  
*Priority Deadline is March 22*

Email: [McNair.gs@wsu.edu](mailto:McNair.gs@wsu.edu)  
Website: [McNair.wsu.edu](http://McNair.wsu.edu)



# First At WSU

Washington State University is a First-gen Forward Institution, recognized for its dedication to serving first-generation college students . If your parent or legal guardian did not complete a bachelor's degree, then you and any siblings you have are considered first-generation college students. Check out these resources available to first gen students at WSU:



FIRST-  
GENERATION  
ABROAD

STUDY ABROAD  
SCHOLARSHIPS

TRIO STUDENT  
SUPPORT SERVICES

TEACHER PREP STUDENT  
SUPPORT SERVICES

VETERANS  
STUDENT SUPPORT  
SERVICES

STEM STUDENT  
SUPPORT  
SERVICES

MCNAIR SCHOLARS  
PROGRAM

[first.wsu.edu](http://first.wsu.edu)

Continue reading on page 15

# KEYS TO SUCCESS: MAKE USE OF YOUR RESOURCES



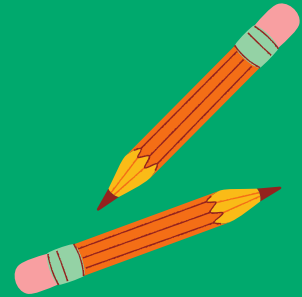
Academic Resources



TUTORING



Math Learning  
Center



The Writing Center



Academic Coaching



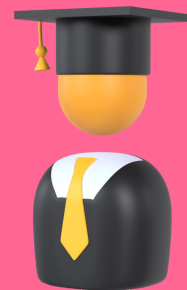
Career  
Coaching

Careers in Psych



Transfer Center

Graduate School  
Resources



Multicultural  
Student Services



HEALTH  
PROFESSIONS  
STUDENT CENTER



Access Center





# The Douglass-O'Connell Global Internship SUMMER STUDY ABROAD



## A Summer Study Abroad Program for Diverse Student Leaders

The Frederick Douglass-Daniel O'Connell Global Internship is a summer work placement program designed for diverse student leaders. Ten exceptional student leaders will be selected for a fully-sponsored summer internship in Dublin, Ireland. They will draw inspiration from the legacies of two remarkable social justice leaders: Frederick Douglass & Daniel O'Connell.

During this unique 8-week program, Douglass-O'Connell Interns will spend **June 14 to August 10, 2024** in Dublin, Ireland and participate in a work placement and receive academic credit. Co-sponsored by CIEE, the Government of Ireland, and the African American Irish Diaspora Network, the program pays homage to these distinguished figures by integrating the values of equality, entrepreneurship, and advocacy into a dynamic and educational internship experience.



## ALL ELIGIBLE APPLICANTS RECEIVE A \$1,500 GRANT



# 10

students will be selected on March 1, 2024

**APPLICATION DEADLINE  
FEBRUARY 1, 2024**

\*Program costs, airfare, and stipend included

\*\*Students not selected as fellows that meet the eligibility requirements are guaranteed a \$1,500 grant toward a 2024 or 2025 CIEE Summer Global Internship.

### *Eligibility Requirements*

- Current undergraduate freshman, sophomore, or junior from an accredited institution
- Minimum GPA of 3.0
- U.S. citizen, U.S. national, or permanent resident
- Pell-eligible preferred (not required)
- Submit your application by the February 1, 2024 deadline



APPLY TODAY • [CIEE.ORG/FDDO](https://CIEE.ORG/FDDO) | [CONTACT US • FDDO@CIEE.ORG](mailto:FDDO@CIEE.ORG)



### **WHAT IS THE THE FREDERICK DOUGLASS-DANIEL O'CONNELL GLOBAL INTERNSHIP?**

The Frederick Douglass-Daniel O'Connell Global Internship is a summer work placement program designed for diverse student leaders. Ten exceptional student leaders will be selected for a fully-sponsored summer internship in Dublin, Ireland. They will draw inspiration from the legacies of two remarkable social justice leaders: Frederick Douglass & Daniel O'Connell.

### **WHAT WILL THE INTERNS STUDY?**

The 2024 Douglass-O'Connell Global Interns will receive academic credit in Irish history and culture with a special exploration of the influence Daniel O'Connell had on Frederick Douglass and their lifetime legacies as successful businessmen and leaders of social change. In addition to this course, Douglass-O'Connell Global Interns will participate in a fully immersive internship at an Irish organization.

### **WHERE WILL THE INTERNS STUDY?**

The 2024 Douglass-O'Connell Global Interns will spend eight weeks in Dublin, Ireland.

### **WHAT ARE THE DATES OF THE PROGRAM?**

The 2024 cohort will study from June 14, 2024 to August 10, 2024.

### **IS THE DOUGLASS-O'CONNELL GLOBAL INTERNSHIP A FULL SCHOLARSHIP?**

Co-sponsored by CIEE, the Government of Ireland, and the African American Irish Diaspora Network, the program award covers the full program cost, airfare, housing, field trips, and an academic course taught by CIEE. Meals and recreational activities are not covered.

### **WHO IS ELIGIBLE FOR THE INTERNSHIP?**

Applicants must:

- Be a current undergraduate freshman, sophomore, or junior from an accredited institution
- Have a minimum GPA of 3.0
- Be a U.S. citizen, U.S. national, or permanent resident
- Be Pell-eligible preferred (not required)
- Submit a complete application no later than February 1, 2024

### **HOW DO I APPLY?**

Applications open November 1, 2023 and are due by February 1, 2024.

### **WHAT SHOULD I KNOW ABOUT THE APPLICATION?**

You must complete the application by February 1, 2024. We suggest that you request your letter of recommendation well in advance of the deadline. You must secure this recommendation from a college/university president, faculty member, or administrator who is familiar with you and your leadership skills. Additionally, we suggest you complete your video submission early, as it is a critical component of the selection process.

### **HOW MANY STUDENTS WILL BE SELECTED FOR THE INTERNSHIP?**

Ten (10) students will be selected.

### **IS THE INTERNSHIP COMPETITIVE?**

Yes, the Douglass-O'Connell Global Internship is a competitive program, but it is a one-of-a-kind transformative experience for exceptional students. If you're not selected for the program, all eligible applicants receive a Douglass-O'Connell Scholars Grant that they may use for a 2024 or 2025 CIEE Summer Global Internship program.

### **WHEN IS THE APPLICATION DUE?**

Completed applications must be submitted by February 1, 2024. Late applications will not be considered for any reason and all application tasks must be finished in their entirety.

### **WHEN WILL THE SELECTION OF THE INTERNS BE ANNOUNCED?**

March 1, 2024

### **WHERE CAN I FIND MORE INFORMATION?**

- Visit our website: [www.ciee.org/fddo](http://www.ciee.org/fddo)
- Follow us on Instagram: [@ciee\\_fddo](https://www.instagram.com/ciee_fddo)
- Email us with your questions: [fddo@ciee.org](mailto:fddo@ciee.org)



# The Douglass-O'Connell Scholars Grant

## RECOMMENDED PROGRAMS

## Study Abroad Grant Opportunity for Your Students

We hope a student from your institution will be selected as a Douglass-O'Connell Global Intern! However, if not, all applicants receive a \$1,500 grant that may be used toward another CIEE summer global internship. Additionally, Pell-eligible students can receive the GAIN travel grant, up to \$500 towards their airfare.

Looking for recommendations for this Plan B? Here's a sample of other CIEE summer global internships that offer the opportunity to gain real-life work experience abroad.

### **SUMMER GLOBAL INTERNSHIP** **EDINBURGH, SCOTLAND | \$7,450**

Intern abroad in Edinburgh, Scotland's capital and thriving business sector. Home to key financial services, technology firms, and educational institutions, Edinburgh is an excellent place to gain work experience and valuable insights into Scottish work environments. Expand your business portfolio by gaining hard and soft skills across diverse industries.

### **SUMMER GLOBAL INTERNSHIP** **MILAN, ITALY | \$8,450**

Intern abroad in Milan, the world capital of business, finance, fashion, design, media, and publishing. As Italy's foremost startup ecosystem, Milan is the perfect place to earn international work experience. Expand your business portfolio by gaining hard and soft skills in the city's dynamic startups, organizations, and businesses.

### **SUMMER GLOBAL INTERNSHIP** **SEVILLE, SPAIN | \$7,450**

Intern abroad in Seville, the capital and largest city of Spain's Andalusia region. As Spain's most important inland port, Seville is the ideal place to gain real-world work experience across diverse industries. From conflict resolution to time management, you'll walk away with hard and soft skills to carry forward in your future career.

### **SUMMER GLOBAL INTERNSHIP**

#### **PRAGUE, CZECH REPUBLIC | \$7,450**

Intern abroad in Prague, the Czech Republic's political, cultural, and economic hub. Here, in the European Union's third-wealthiest region, you'll embark on a summer internship to gain hard skills relevant to your career path and soft skills like intercultural communication, networking, time management, conflict resolution, creative thinking, and teamwork.

### **SUMMER GLOBAL INTERNSHIP**

#### **LONDON, ENGLAND | \$8,450**

Intern abroad in London, England's economic, political, and cultural hub and the world's foremost financial center. This internship offers an unparalleled opportunity to gain work experience at a British company relevant to your career interests. From conflict resolution to time management, you'll walk away with hard and soft skills to apply to your career.

### **SUMMER GLOBAL INTERNSHIP**

#### **BERLIN, GERMANY | \$7,450**

Intern abroad in Berlin, Germany, a vibrant city committed to innovation, creativity, and entrepreneurship. During your internship, you'll gain hands-on work experience in one of the world's most remarkable economies, where you'll gain work experience across diverse industries. You'll also have free time to explore Berlin's museums, landmarks, and culture.

### **SUMMER GLOBAL INTERNSHIP**

#### **PARIS, FRANCE | \$7,450**

Intern abroad in Paris, France's economic powerhouse and cultural metropolis. Home to the most Fortune 500 company headquarters in Europe, Paris is the ideal place to gain work experience in the city's various startups, businesses, and industries. From conflict resolution to time management, you'll walk away with hard and soft skills to apply to your career.

# SURCA

SHOWCASE FOR UNDERGRADUATE  
RESEARCH AND CREATIVE ACTIVITIES

Conducting research? Pursuing scholarship? Involved in creative activities?

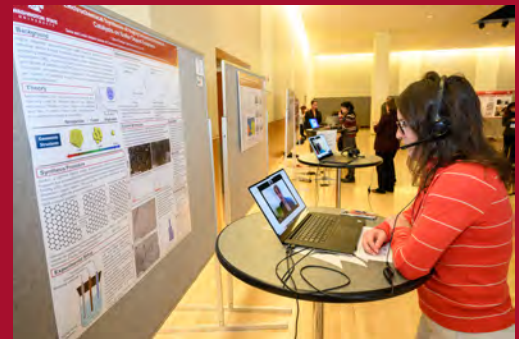
**SHOWCASE YOUR WORK AT SURCA 2024!**

Deadline for presenters' applications is  
Tuesday, February 20, 2024 at 11:59 p.m.



**SURCA 2024 is on March 25!**

Apply at [SURCA.wsu.edu /participants/apply](https://SURCA.wsu.edu/participants/apply)



WASHINGTON STATE UNIVERSITY  
Office of  
Undergraduate Research

Continue reading on page 22

# Undergraduate Research Awards

8 types of Undergraduate Research awards are available to students in all majors on all campuses. The application requires a personal statement and brief description of intended or current research, scholarship, or creative activity.

For more information and to access the online application form, visit the awards page at [UndergraduateResearch.wsu.edu](https://UndergraduateResearch.wsu.edu)



**Applications due: Jan. 26, 2024**

**Faculty-Mentor Endorsement due: Feb. 2, 2024**

---

Successful recipients are required to present their research at WSU's annual Showcase for Undergraduate Research and Creative Activity in March 2025.

**SURCA**  
SHOWCASE FOR UNDERGRADUATE  
RESEARCH AND CREATIVE ACTIVITIES



WASHINGTON STATE UNIVERSITY  
**Office of  
Undergraduate Research**

## Undergraduate Research, Scholarship, or Creative Activity Support

**Application deadline:** January 26, 2024

**Award amount:** \$1,000-4,000

**Contact:** CAS Grant and Fellowship Support, [cas.gfs@wsu.edu](mailto:cas.gfs@wsu.edu)

### Purpose

The College of Arts and Sciences (CAS) is pleased to provide support to undergraduate students engaged in research, scholarship, or creative activity. Scholarships and/or other funding between \$1,000 and \$4,000 will be awarded to recipients for the 2024-25 academic year. Applicants must have a current declared major within CAS and be in good standing. Projects must be guided/supervised by a tenure- or career-track faculty member in CAS.

### Application

The application for support should be 5 pages in length and include all of the following components:

**1. CAS Grant and Fellowship Support Cover Sheet (1 pg)**

The fillable pdf cover sheet form for this program can be found at [cas.wsu.edu/gfs/internal-funding-opportunities/](https://cas.wsu.edu/gfs/internal-funding-opportunities/). All requested information must be provided.

**2. Research/Creative Activity Description (2 pages)**

The applicant must provide a non-technical, two-page description as outlined below.

- a. A brief statement (no more than 1 paragraph) introducing yourself and your academic profile and interests.
- b. A description of your overall engagement with research, scholarship, or creative activities.
- c. A description of your current or planned research, scholarship, or creative activity and its significance.

**3. Faculty Support Letter (1 page)**

The sponsoring faculty mentor or mentors must have their primary appointment in the College of Arts and Sciences. The letter should include:

- d. Confirmed agreement to support and actively supervise the research, scholarship, or creative activity described by the student.
- e. Description of the activities in which the mentor(s) and the student will work together.

**4. Resume (1 page)**

Provide a one-page résumé that includes, but is not limited to, applicant name, WSU ID number, mailing address (local, permanent, and departmental), telephone number (local, permanent, and departmental), e-mail address, academic accomplishments, declared major, and anticipated date of graduation.

### Eligibility

- Applicants must meet the standard [eligibility requirements for CAS scholarships](#), including but not limited to, enrollment during the 2023-24 academic year and admission to a [CAS major](#).

- Students must be in good standing in order to receive CAS support.

### **Terms and Conditions of Award**

Funds will be deposited into student accounts or a department account dependent upon the type of fund and/or Gift Use Agreement. Funds are intended to support the student and will not necessarily directly support the research, scholarship, or creative activity.

Award recipients are required to submit an abstract to the 2025 Showcase for Undergraduate Research and Creative Activities (SURCA) or other professional presentation.

The successful applicant will be required to submit a final report by May 1, 2025. The report may be in the form of a scholarly paper, or a short written summary that accompanies a creative product, such as a collection of poetry or an electronic audio or video file documenting a creative activity. **Submit final reports to CAS Grants and Fellowship Support at [cas.gfs@wsu.edu](mailto:cas.gfs@wsu.edu).**

### **Format and Deadline:**

Submit application as a **single pdf attachment** in an email to [cas.gfs@wsu.edu](mailto:cas.gfs@wsu.edu) no later than 5pm on January 26, 2024.

Questions may be directed to [cas.gfs@wsu.edu](mailto:cas.gfs@wsu.edu).



# Become a Student Ambassador

For more information, contact: Arlene Parkay, [parkaya@wsu.edu](mailto:parkaya@wsu.edu)

Learn more at

[cas.wsu.edu/ambassador](https://cas.wsu.edu/ambassador)

Applications due Monday, February 19, 2024  
Interviews on Sunday, February 25, 2024

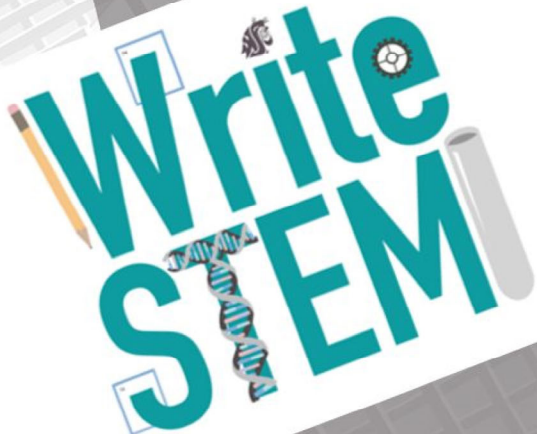


WASHINGTON STATE UNIVERSITY  
**College of Arts and Sciences**

Continue reading on page 26

# NEED HELP WITH STEM WRITING?

WriteSTEM is here to support you!  
Visit us from 5-7 p.m. Mondays  
in **SPARK 208** or on **Zoom!**



Write  
STEM

Meeting ID:  
970 6001 8383  
Passcode: WriteSTEM



# FORENSIC PSYCHOLOGY



Forensic psychology is a specialty in professional psychology characterized by activities primarily intended to provide professional psychological expertise within the judicial and legal systems. They often testify in court as expert witnesses. They typically specialize in family, civil, or criminal casework.

## CAREER OPTIONS

Psychologists in this field may work in prisons, rehabilitation centers, police departments, courthouses, law firms, schools, government agencies or private practices.

## FOR MORE INFO VISIT

[www.onetonline.org](http://www.onetonline.org)

[www.bls.gov](http://www.bls.gov)

[www.apa.org](http://www.apa.org)

[www.abfp.com](http://www.abfp.com)

## GRADUATE PROGRAMS

SCAN ME



## MINOR/ADDITIONAL MAJOR IDEAS

Criminal Justice

Anthropology

Sociology