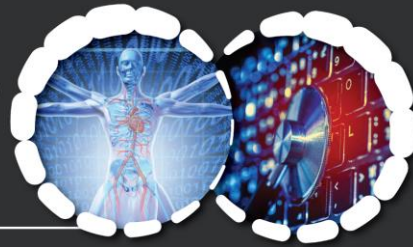


# TRANSLATIONAL MEDICINE SYMPOSIUM



CREATING SOLUTIONS FOR CLINICAL PROBLEMS  
OCTOBER 26, 2018 | WSU HEALTH SCIENCES SPOKANE

**12:00-1:00** Lunch and networking

**1:00-2:15** Panel 1: Clinical Trials Operations and Research

- Moderator: Katrina Rogers, President, Katrina Rogers Consulting
- Panelist: Kris Aalto, Director of Research, Premier Clinical Research
- Panelist: Anne Reedy, Executive Director, MultiCare Institute for Research & Innovation
- Panelist: John Roll, Professor and Vice Dean for Research and Associate VP for Health Sciences Research; WSU College of Medicine and WSU Office of Research
- Panelist: Jaci Skidmore, Director of Clinical Research Operations, University of Utah School of Medicine

**2:15-2:45** Networking

**2:45-3:30** The Robert F. E. Stier Memorial Lecture in Medicine, presented this year by **Dr. Larry Sherman**, is titled *Targeting the extracellular matrix to reverse neurodegeneration*

**3:30-3:45** Break

**3:45-4:15** Late breaking news

**4:15-5:30** Panel 2: Clinical Data Analysis and Bioinformatics

- Moderator: Andrew Richards, College Technology Incubator Officer, Elson S. Floyd College of Medicine
- Panelist: Karen Ferguson, Practice Administrator, Arthritis Northwest
- Panelist: Nella Ludlow, Clinical Professor and Director; WSU School of Electrical Engineering and Computer Science, and WSU Data Analytics
- Panelist: Jared Roach, Senior Research Scientist, Institute for Systems Biology

**5:30-7:00** Reception