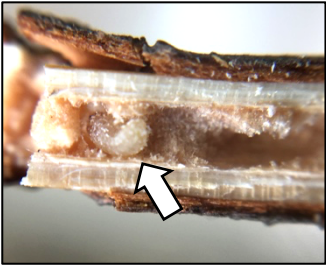


Request to sample for the Douglas-fir Twig Weevil



WASHINGTON STATE
UNIVERSITY
EXTENSION



The Douglas-fir twig weevil

- A small beetle (2-3 mm).
- Attacks Douglas-fir, noble fir, Nordmann fir, and potentially other firs grown for Christmas trees.
- ❖ **It was formerly only known on Douglas-fir. We're studying why it's found on different tree species.**

Biology and common symptoms

- Weevil larvae tunnel through twigs, consume internal tissue, and cause twigs to die back.
- The most noticeable symptoms are scattered flagged branches.
 - Often only the first or both the first & second year's growth are killed on individual twigs.

Contact us

- If your trees have similar symptoms, even at low levels, we would be interested in sampling for twig weevil.
- Contact Thomas Whitney for details: thomas.whitney@wsu.edu

- ❖ *This research is supported by the Christmas Tree Promotion Board.*