

From: noreply@wsu.edu
To: [curriculum.submit](#)
Subject: 767335 Women's, Gender, and Sexuality Studies Requirements New : Add Graduate Certificate
Date: Friday, September 29, 2023 5:35:17 PM
Attachments: [Form.html](#)
[WGSS Graduate Certificate Proposal.pdf](#)

Pamela Thoma has submitted a request for a major curricular change. His/her email address is: pthoma@wsu.edu.

Request (from selection dropdown): Add Graduate Certificate

Department: Women's, Gender, and Sexuality Studies

New Graduate Certificate: Women's, Gender, and Sexuality Studies

CIP Code: 05-0299

Requested Effective Date: Fall 2024

Campus: Pullman, Spokane, Tri-Cities, Vancouver,

Dean: Barry, Tammy - Vice Provost - Graduate and Professional Education Swindell,
Samantha - Assoc Dean - CAS

Chair: Barry, Tammy – Chair – Graduate and Professional Education Thoma, Pamela –
Director – Women's, Gender, and Sexuality Studies

Catalog Subcommittee
Approval Date

AAC, PHSC, or GSC
Approval Date

Faculty Senate
Approval Date

From: [Swindell, Samantha](#)
To: [curriculum.submit](#); [Thoma, Pamela](#)
Subject: FW: 767335 Women's, Gender, and Sexuality Studies Requirements New : Add Graduate Certificate
Date: Tuesday, October 3, 2023 8:10:54 AM
Attachments: [WGSS Graduate Certificate Proposal.pdf](#)

1. I approve this proposal in its current form.

From: curriculum.submit@wsu.edu <curriculum.submit@wsu.edu>
Sent: Friday, September 29, 2023 5:31 PM
To: Thoma, Pamela <pthoma@wsu.edu>; Swindell, Samantha <sswindell@wsu.edu>; curriculum.submit <curriculum.submit@wsu.edu>
Subject: 767335 Women's, Gender, and Sexuality Studies Requirements New : Add Graduate Certificate

Thoma, Pam – Director – Women's, Gender, and Sexuality Studies,

Swindell, Samantha - Assoc Dean - CAS,

Pamela Thoma has submitted a request for a major curricular change.

Request (from selection dropdown): Add Graduate Certificate

Department: Women's, Gender, and Sexuality Studies

New Graduate Certificate: Women's, Gender, and Sexuality Studies

CIP Code: 05-0299

Requested Effective Date: Fall 2024

Campus: Pullman, Spokane, Tri-Cities, Vancouver,

Both Chair and Dean approval is required to complete the submission process. Please indicate that you have reviewed the proposal by highlighting one of the statements below and **reply all** to this email. (curriculum.submit@wsu.edu.) [Details of major change requested can be found in the attached supplemental documentation]

1. I approve this proposal in its current form.
2. I approve this proposal with revisions. Revisions are attached.
3. I do not approve this proposal. Please return to submitter.

From: [Barry, Tammy](#)
To: [Golden, Blaine Everette](#)
Subject: FW: 767335 Women's, Gender, and Sexuality Studies Requirements New : Add Graduate Certificate
Date: Thursday, October 12, 2023 2:40:26 PM

Blaine,

I should have clarified on this approval below that I approve the WGSS certificate as both chair and vice provost over the unit.

Thank you!

Tammy

--

Tammy D. Barry, Ph.D.
Vice Provost for Graduate and Professional Education
Professor, Department of Psychology
Washington State University
Pullman, WA 99164
(509) 335-7008

From: Barry, Tammy
Sent: Thursday, October 12, 2023 2:33 PM
To: curriculum.submit@wsu.edu
Subject: RE: 767335 Women's, Gender, and Sexuality Studies Requirements New : Add Graduate Certificate

I approve this proposal in its current form.

Thank you,

Tammy Barry

--

Tammy D. Barry, Ph.D.
Vice Provost for Graduate and Professional Education
Professor, Department of Psychology
Washington State University
Pullman, WA 99164
(509) 335-7008

From: curriculum.submit@wsu.edu <curriculum.submit@wsu.edu>
Sent: Friday, September 29, 2023 5:31 PM
To: Barry, Tammy <tammy.barry@wsu.edu>
Subject: 767335 Women's, Gender, and Sexuality Studies Requirements New : Add Graduate Certificate

Barry, Tammy – Chair – Graduate and Professional Education,

Barry, Tammy - Vice Provost - Graduate and Professional Education,

Pamela Thoma has submitted a request for a major curricular change.

Request (from selection dropdown): Add Graduate Certificate

Department: Women's, Gender, and Sexuality Studies

Proposed Graduate Certificate Program

Title of Graduate Certificate

Graduate Certificate in Women's, Gender, and Sexuality Studies

Contact Information

Pamela Thoma

Director, Program in Women's, Gender, and Sexuality Studies
Professor, English, WSU Pullman
Phone: (509) 335-4382; Email: pthoma@wsu.edu

Graduate Program Coordinator
Heloise Abtahi
Phone (509) 335-700
Email: jh.abtahi@wsu.edu

Graduate Certificate Proposal Committee

Pamela Thoma

Professor, English, WSU Pullman
Director and Affiliate Faculty, Program in Women's, Gender, and Sexuality Studies
Phone: (509) 335-4382; Email: pthoma@wsu.edu

Ashley Boyd

Associate Professor of English, WSU Pullman
Affiliate Faculty, Program in Women's, Gender, and Sexuality Studies
Phone: (509) 335-7124; Email: ashley.boyd@wsu.edu

Monica Kirkpatrick Johnson

Regents Professor, Sociology, WSU Pullman
Affiliate Faculty, Program in Women's, Gender, and Sexuality Studies
Phone: (509) 335-8773; Email: monicakj@wsu.edu

M.A. Miller

Assistant Professor, WGSS, WSU Pullman
Affiliate Faculty, Program in Women's, Gender, and Sexuality Studies
Phone: 509-335-8755; Email: m.a.miller@wsu.edu

Elissa Schwartz

Associate Professor, Mathematics/Statistics and School of Biological Sciences, WSU Pullman
Affiliate Faculty, Program in Women's, Gender, and Sexuality Studies
Phone: (509) 335-5631; Email: ejs@wsu.edu

Nishant Shahani

Professor, English, WSU Vancouver
Affiliate Faculty, Program in Women's, Gender and Sexuality Studies,
Phone: (360) 546-9439; Email: nshahani3@wsu.edu

Jennifer Sherman

Professor, Sociology, WSU Pullman
Affiliate Faculty, Program in Women's, Gender, and Sexuality Studies
Phone: (509) 335-4163; Email: Jennifer_sherman@wsu.edu

Betty Wilson

Assistant Professor, Human Development, WSU Pullman
Affiliate Faculty, Program in Women's, Gender, and Sexuality Studies
Email: betty.wilson@wsu.edu

Table of Contents

Rationale for Certificate Program	2
Student Learning Objectives	3
Admission Requirements	3
Certificate Requirements	3-4
Participating Faculty and Resources	4
Administration and Oversight	5
Advertisement	5

Rationale for Certificate Program

The interdisciplinary Women's, Gender, and Sexuality Studies (WGSS) Graduate Certificate will provide an opportunity for WSU graduate students and other professionals to enhance their critical understanding of gender equity and justice as theorized and practiced in the field of Women's, Gender, and Sexuality Studies nationally and transnationally. Future academic and non-academic professionals alike will gain fundamental theoretical background, practical research knowledge, and an intersectional analytical framework that will equip them with critical skills to address challenges in gender justice, especially as they connect to other social justice struggles more broadly.

In the United States and Canada, there are twenty-four institutions that offer a PhD program in WGSS or its constituent/cognate fields (e.g., Gender Studies), including in the PNW, the University of Washington and Oregon State University. There are 159 institutions that offer master's degrees, and in 2020-2021 over 16,000 undergraduate area studies degrees (ethnic, gender, and cultural studies) were awarded in the US.¹ Training for careers in higher education is often and increasingly, however, a PhD or Master's in a discipline with an interdisciplinary graduate minor or graduate certificate in WGSS. This combination meets both complex interest demands of today's graduate students as well as academic labor demands for vacancies left by a retiring professoriate—the first and second generations of scholars who founded WGSS in the academy. Vacancies are being filled in the context of fewer tenure-track positions and more professors of practice. Presently, WSU offers no interdisciplinary credentials in WGSS beyond the undergraduate degree. Indeed, WSU's Program in Women's, Gender, and Sexuality Studies is frequently queried about graduate education, WSU graduate students regularly enroll in the undergraduate seminar in feminist theory (WGSS 481), and graduate students trained to teach for WGSS at WSU readily find academic employment. Outside academia, WGSS postgraduate certificate credentials in combination with a professional degree in public administration, human resources, public health, and law are frequent educational paths for those interested in public policy, health equity, and social justice. A WGSS interdisciplinary graduate certificate will allow graduate education for students at WSU to go beyond disciplinary and industry specific credentials and will allow others who meet graduate admissions requirements to strengthen their expertise in addressing the needs of a diverse world.

The WGSS graduate certificate program collaboratively incorporates WSU faculty, specifically Program in Women's, Gender, and Sexuality Studies Affiliate Faculty, with expertise in Feminist and Queer Studies to provide complementary or convergent training for students in a variety of graduate programs at WSU (e.g., M.A./M.S./M.F.A. and Ph.D. programs in Anthropology, Art, Cultural Studies and Social Thought in Education, English, History, Human Development/Prevention Science, Sociology, among others). Many WGSS Affiliate Faculty members have feminist and queer studies expertise that overlaps with other interdisciplinary areas of research, such as Anthropocene Studies, Digital Media Studies, Disability Studies, Health Studies, and Science and Technology Studies. Specifically, the WGSS Graduate Certificate focuses on providing background in social, political, and cultural theory, feminist and queer research approaches in WGSS, and new topics of scholarly inquiry and debate, with the goal of training the next generation of scholars and professionals to address the equity and justice challenges of today and tomorrow.

¹ National Women's Studies Association <https://www.nwsa.org/page/PhDProgramList>; College Factual <https://www.collegefactual.com/majors/ethnic-cultural-gender-studies/>

Student Learning Objectives

Upon meeting all required elements of the WGSS graduate certificate, the student will have acquired the following skills and knowledge:

1. Demonstrate through coursework and seminars an understanding of interdisciplinary qualitative approaches to research for breadth and depth of expertise in the field of WGSS.
2. Understand WGSS intersectional frameworks, theories, and analytical approaches to gender and sexuality in complex interconnection with race, social class, dis/ability, ethnicity, and religion.
3. Recognize and compare varied cultural knowledge systems of gender and sexuality.
4. Work in collaboration with diverse populations to solve complex, real-world problems.
5. Develop oral and written communication skills to present/deliver ideas, proposals, and research.
6. Value and apply equity, inclusion, and social justice analytical skills in research, problem solving, and practice.

Admission Requirements

The certificate program is open to current WSU graduate students of any discipline on the Pullman, Vancouver, Spokane, Tri-Cities, ~~and Extension~~ campuses who have goals and interests that align with the certificate program ~~as well as to non-degree seeking students who meet the requirements for graduate study at WSU and are admitted to the WGSS certificate program.~~ **(deletions as per GSC review 11/8/23)**. Students are required to have/maintain a graduate GPA of 3.0 or better in order to participate in the program, whether as a formal certificate student or as a single course student. Students may pursue the certificate during any phase of their training as long as there is sufficient time to complete the requirements. It is expected that it will take **on average two-three semesters** ~~approximately two years~~ to complete all the requirements of the certificate, depending upon the elective options, which students will need to coordinate with WGSS and their current Master's or PhD program requirements **(additions/deletions as per GSC review 11/8/23)**.

Certificate Requirements

Students earn the WGSS certificate via a combination of 9 credits of interdisciplinary coursework and ~~participation~~ **attendance in** at least one WGSS seminar **series** **(deletion/additions as per GSC review 11/8/23)**. Additional mentoring, teaching, conference, internship, and community engagement opportunities will be offered as part of this program. Below are details regarding the two certificate requirements.

Note: The topics course should be a course outside the student's disciplinary home unit. WGSS 561, Topics in Feminist and Queer Studies (3 cr.), will be used to deliver specialized coursework in WGSS and typically will be taught by WGSS Affiliate Faculty in collaboration with their home units. All WGSS Affiliate Faculty who will teach for the WGSS Graduate Certificate carry graduate faculty standing in their appointing units. **Instructional delivery will be synchronous and in-person, with AMS as needed.**

(Addition as per GSC review 11/8/13)

Interdisciplinary Coursework (Complete all: 6 cr. total)	credit
§ WGSS 541 Feminist and Queer Approaches to Research	3
§ WGSS 581 Feminist and Queer Theories and Frameworks	3
Topics Elective Coursework Options (Complete 1: 3 cr. total)	
§ AMST 529 Cultural Politics of the Body	3
§ ANTH 591 Special Topics: Gender & Sexuality in Buddhist Culture	3
§ COMM 524 Intercultural/International Communication & Social Change	3
§ CRMJ 580 Gender and Justice	3
§ CSSTE532 Gender, Power, and Education	3

§ DTC	561 Studies in Technology and Culture	3
§ ENGL	548 Seminar in Critical & Cultural Theory: Pandemics	3
§ ENGL	591 Topics in Pedagogy: Anti-Oppressive Pedagogies	3
§ HIST	527 Public History: Theory and Methodology	3
§ HIST	575 Field Course in Women's History	3
§ PHIL	530 Bioethics	3
§ POLS	530 Seminar in Global Politics	3
§ SOC	517 Seminar in Contemporary Sociological Theory	3
§ SOC	542 Social Stratification: Class, Race, and Gender Inequalities	3
§ WGSS	561 Topics in Feminist and Queer Studies	3

2. *Participation in at least one WGSS Seminar Series:*

- InQuery Symposium (annual symposium with student research presentations and keynote)
- WGSS Research Symposium (visiting lecture series for WGSS 541 and WSU)
- Feminist/Queer Dialogues Series (biannual WGSS Affiliate Faculty research presentations)

Note: All students are required to attend at least one seminar series event, and all students will be strongly encouraged to present research at InQuery (addition as per GSC review 11/8/23)

Participating Faculty and Resources

WGSS Affiliate Faculty from two colleges, including the College of Arts and Sciences and the College of Agricultural, Human, and Natural Resource Sciences, will be participating in delivery of required and elective courses. There are over forty WGSS Affiliate Faculty from across the WSU system. Following is a list of WGSS Affiliate Faculty who serve as graduate faculty in their home units and teach affiliated graduate courses for their home units that may fulfill the WGSS elective.

Dr. Peter Boag	History
Dr. Ashley Boyd	English and Education
Dr. Donna Campbell	English
Dr. Julia Cassaniti	Anthropology
Dr. Chris Dickey	Music
Dr. Marcelo Diversi	Human Development
Dr. Patricia Glazebrook	PPPA
Dr. Luz Maria Gordillo	History
Dr. L. Heidenreich	History
Dr. Monica Kirkpatrick Johnson	Sociology
Dr. Julie Kmec	Sociology
Dr. Debbie Lee	English
Dr. John Lupinacci	Cultural Studies and Social Thought in Education
Dr. Laurie Mercier	History
Dr. M.A. Miller	WGSS/English
Dr. Melanie Angela-Neuilly	Criminal Justice and Criminology
Dr. Melissa Nicolas	English
Dr. Sue Peabody	History
Dr. Amelie Pedneault	Criminal Justice and Criminology
Dr. Donna Potts	English
Dr. Amy Salazar	Human Development
Dr. Elissa Schwartz	Math/Stats & SBS
Dr. Nishant Shahani	WGSS/English
Dr. Jennifer Sherman	Sociology
Dr. Pamela Thoma	WGSS/English
Dr. Betty Wilson	Human Development

Administration and Oversight

The WGSS program in the College of Arts and Sciences will serve as the academic home of the WGSS Graduate Certificate, while its administrative home and staff support will be in the Graduate School, alongside the Independent Interdisciplinary PhD Program (IIDP) with supervision from the Vice-Provost for Graduate and Professional Education. The WGSS Graduate Certificate program will be coordinated by the Advisory Committee for the Program in Women's, Gender, and Sexuality Studies (chaired by the WGSS director), with input from WGSS Affiliate Faculty who may also teach in the WGSS Graduate Certificate program. The current WGSS Advisory Committee members are listed below. As it does for undergraduate WGSS curricula, it will advise the director of WGSS, who will work in collaboration with the Graduate School, on the day-to-day operations of the WGSS Graduate Certificate. The WGSS Advisory Committee meets monthly, and membership will be reviewed and amended as necessary. The WGSS director, with assistance from members of the committee, will coordinate the certificate across colleges and campuses, manage course schedules and staffing, review applications/admissions, organize student and faculty research seminars, ensure oversight and satisfactory completion by students, coordinate assessment, and review any proposed changes on an annual basis.

Program in Women's, Gender, and Sexuality Studies Advisory Committee

Pamela Thoma, Director of WGSS & Committee Chair
Monica Kirkpatrick Johnson
M.A. Miller
Marian Sciachitano
Nishant Shahani
Elissa Schwartz
Graduate Student Representative

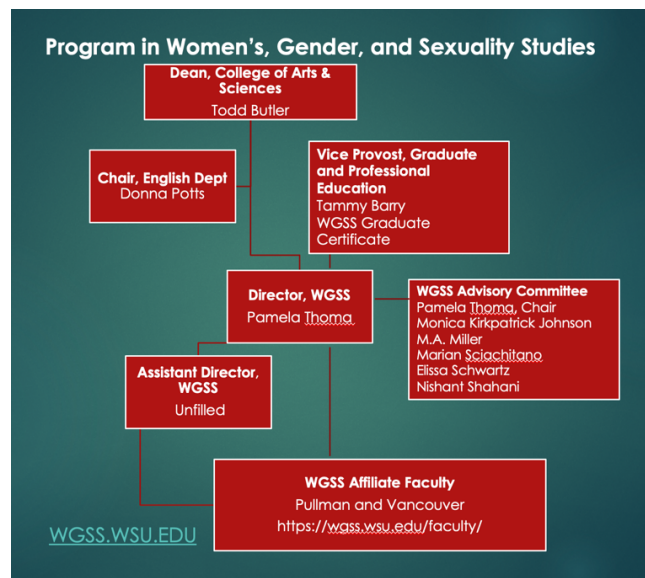


Fig. 1: Organizational Chart for The Program in Women's, Gender, and Sexuality Studies

Advertisement

The WGSS graduate certificate advertising plan will include, in addition to promotion by the Graduate School, messaging to all WGSS Affiliate Faculty with requests for dissemination via WSU and professional networks, CAS and CAHNRS Chairs and Directors, and all WSU Graduate Program Coordinators. A webpage dedicated to the certificate will be created as part of the WGSS website new WSU brand redesign. Externally, students for the WGSS Graduate Certificate will be recruited by advertising with undergraduate, professional, and law schools in the Pacific Northwest, including the University of Idaho and Gonzaga University, for example.