

Tailoring Extension Education Efforts to Region-Specific Oilseed Production Zones in Washington State



Karen Sowers, Dennis Roe and Bill Pan
Washington State University – Department of Crop and Soil Sciences



Introduction: The Washington State Biofuels Cropping Systems Research and Extension Project was initiated in 2007 to evaluate alternative crops that may have the potential to meet some of the increasing demand for biofuel production.

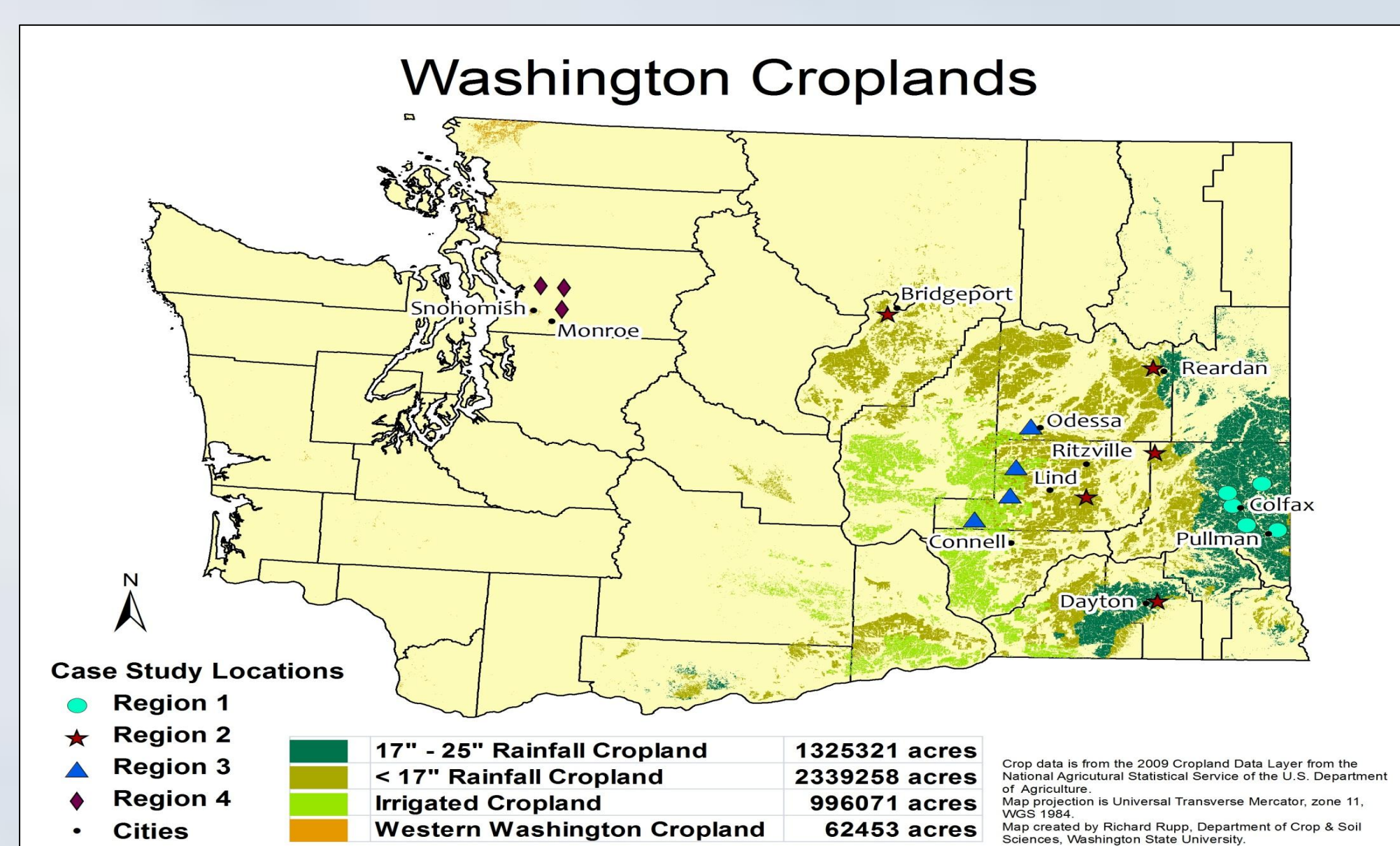
Canola, camelina, mustard, safflower, flax, sunflower, switchgrass, and giant reedgrass were initially included in studies across four major agroclimatic zones:

- 1) High rainfall (annual cropping)
- 2) Low (wheat-fallow) to intermediate (winter wheat-spring cereal-summer fallow) rainfall
- 3) Irrigated, central WA
- 4) Western WA

After five years of research trials, we are focusing our efforts on discovering and improving production practices for winter and spring canola, camelina, and safflower in zones 1-3.

Objective: To provide relevant, timely and easily accessible information and outreach to growers, industry, agency, and others that is based on research from each cropping zone.

Case Studies



- 18 growers interviewed (see map above for locations)
- Growers have experience with 7 oilseed crops
- Case studies provide first-time oilseed growers with information from experienced growers in their rainfall zone



Field Events



- More than 1900 people attend field events annually.
- Since 2007, there are 15 first-time canola growers in wheat-fallow region, and acreage has increased from 15 acres to more than 6500 acres.

Educational Workshops



- Over 250 attendees from 5 states at annual oilseed workshops
- 53% of growers at the workshops had planted oilseed crops in the last 5 years and 93% would consider planting an oilseed crop in the future
- Workshop will be a two-day conference in 2013 with record attendance expected

Extension = Outreach + Education

Extension Publications

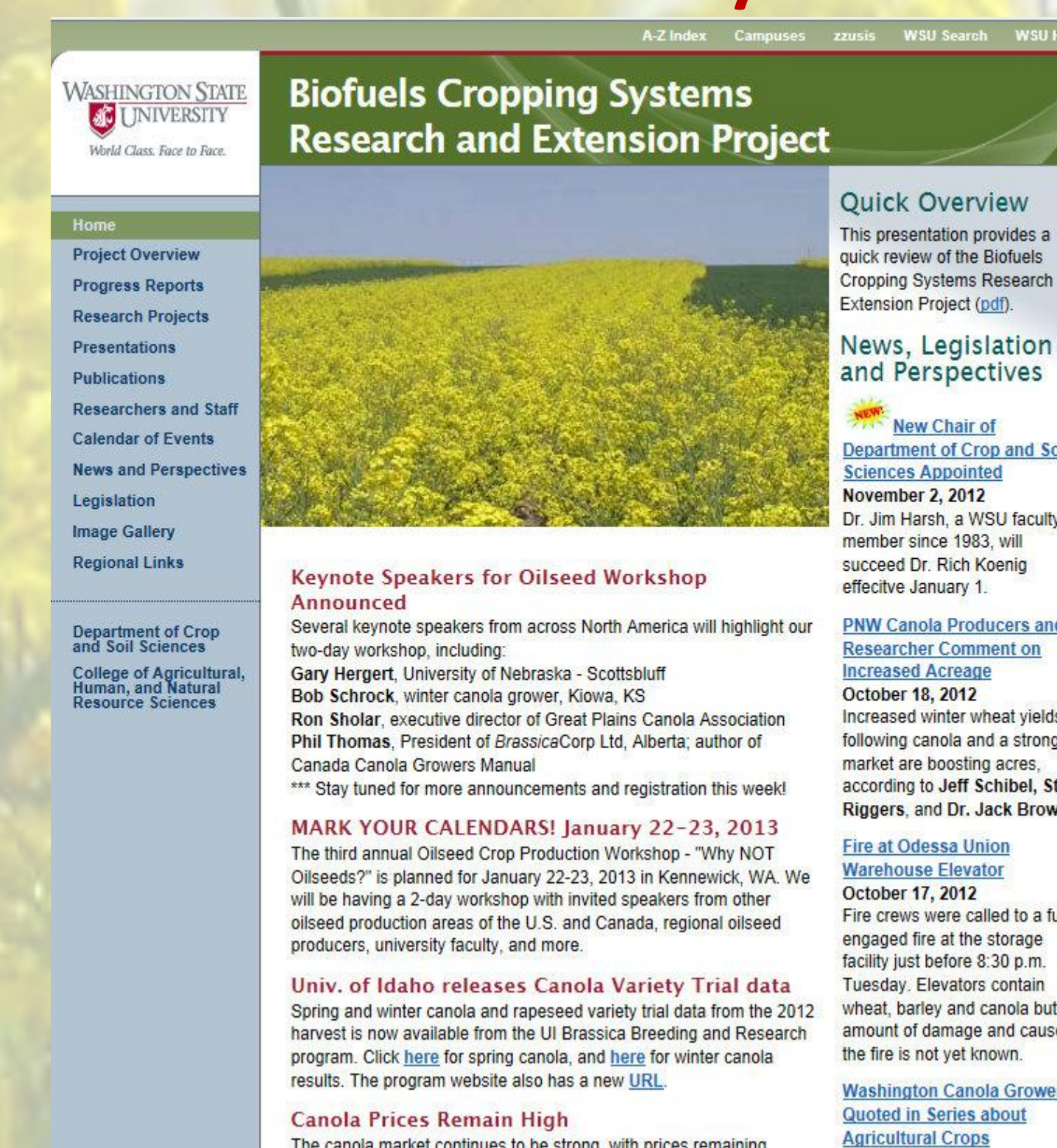


Upcoming fact sheets and bulletins:

- Spring Canola Row Spacing in Annual Cropping Zones
- Irrigated Switchgrass Management
- Cereal Rye Control in Winter Canola
- Winter Canola Seeding Guide for Wheat-fallow Systems
- Online Enterprise Budgets
- Canola Silage in Dairy Operations
- Irrigated Safflower Production

Website

www.css.wsu.edu/biofuels



- Direct access to regional research reports, workshop presentations, current news and events
- Visits from 21 countries, 31 states, 45 cities in WA

Acknowledgments

The authors thank the following funding support: WA Biofuel Cropping Systems Project 3018, WSU ARC project 9024