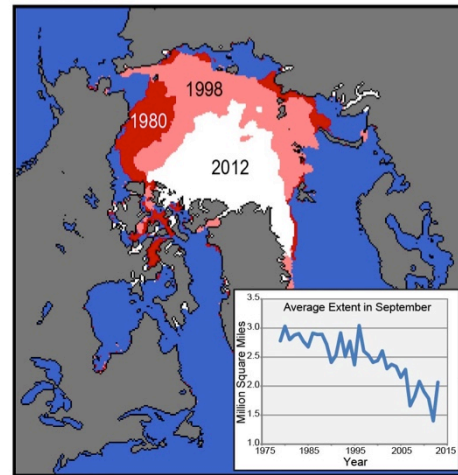
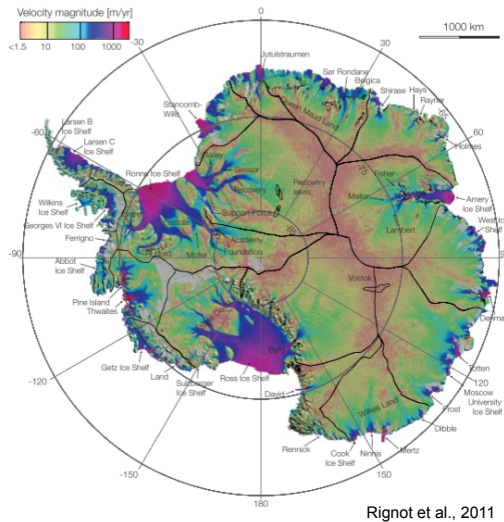


New course for Spring 2017:

GEOG 404/504 ST: The Cryosphere

Dr. Tim Bartholomaus
tbartholomaus@uidaho.edu

MWF 11:30 – 12:20

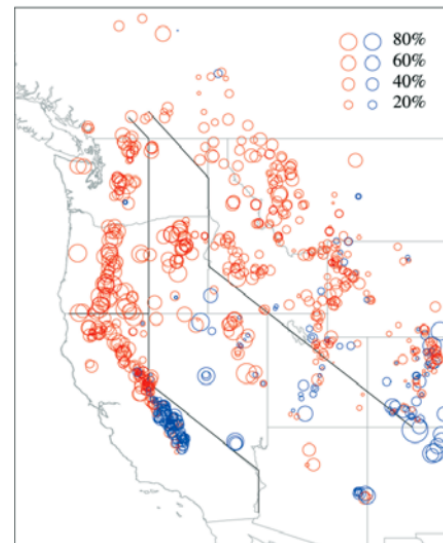


NSIDC, 2012; Data from Fetterer et al., 2013

Idaho's shrinking snowpack, thinning Arctic sea ice, and accelerating glaciers are all elements of the Earth's dynamic and rapidly changing cryosphere. These frozen landscapes play critical roles in the climate system, and ice loss is on track to raise global sea level by several feet within our lifetimes. Changes in the cryosphere are altering the surface of the Earth as we watch, affecting us all.

Learn:

- how glaciers flow,
- why snow is melting off earlier in the spring,
- how ice preserves a record of past global temperatures,
- how permafrost alters the landscape,
- and much more...



Mote et al., 2005