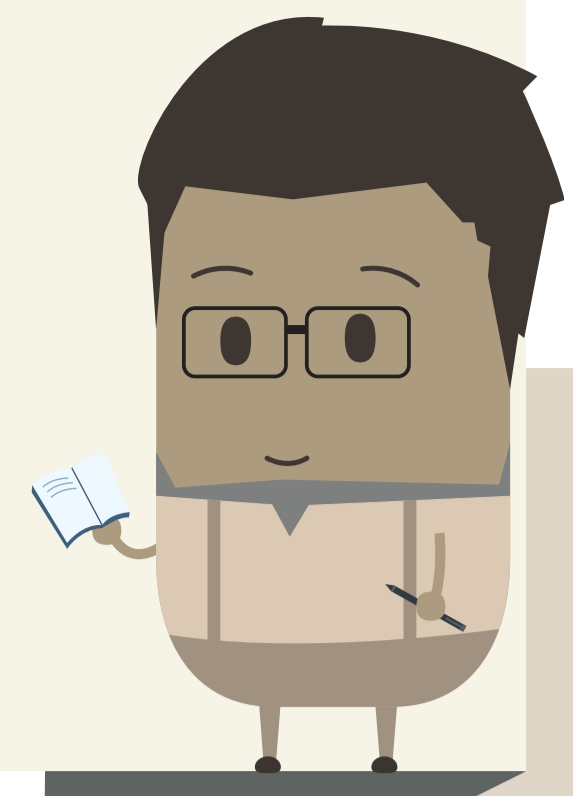


# Financial Aid: What's Next?



## Want to view your Financial Aid and Accept or Decline your Loans?



1. Visit my.WSU.edu
2. Select Finances, then View Financial Aid
3. Choose to Accept or Decline Awards
4. Click Submit!

## 3<sup>RD</sup> Party Access!

## Want to grant someone else access to your account?

1. Visit my.WSU.edu
2. Click Self Service
3. Select Third Party Access (Twice)
4. Choose Share my Information!

## Want to see your To-Do items for Financial Aid?

1. Visit my.WSU.edu
2. Open Student Center
3. See the right side of the page with the checklist boxes
4. Click Details!



## Want to \$et up Direct Depo\$it?

1. Visit my.WSU.edu
2. Click Self Service
3. Choose Campus Finances
4. Select Enroll in Direct Deposit!



## Want financial aid to pay ALL charges?



1. Visit my.WSU.edu
2. Select Self Service
3. Choose Campus Finances
4. Click View & Grant Student Permissions
5. Read and Submit Title IV Permission Form!

## You've accepted your loans..Now what?

### Complete Entrance Counseling!

1. Visit StudentLoans.gov and Log In
2. Click on Complete Counseling
3. Start Entrance Counseling!

### Sign Master Promissory Note!

1. Visit StudentLoans.gov and Log In
2. Click on Complete Master Promissory Note
3. Select Subsidized/Unsubsidized and Sign!

M  
P  
N

FAFSA/WASFA  
Open

October 1  
2017

FAFSA/WASFA  
Deadline

November 30  
2017

WSU General Scholarship  
Application Deadline

January 31  
2018

Document  
Submission Deadline

February 15  
2018



Student Financial Services  
WASHINGTON STATE UNIVERSITY

financialaid.wsu.edu

**COUG  
TALKS**

# SCHOLARSHIPS

**ALIVE  
2017**

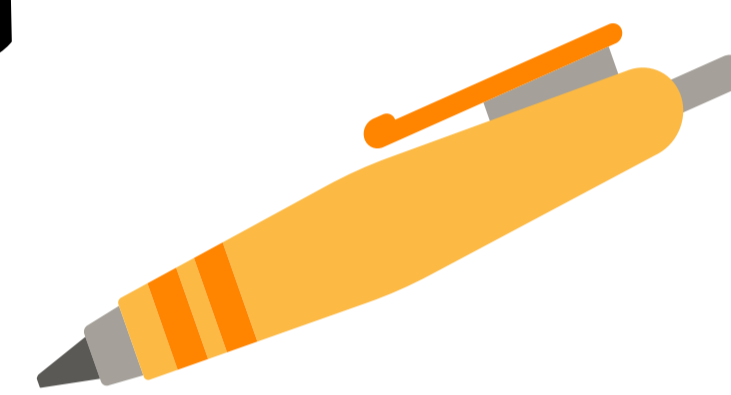
## 101

**THE MORE  
SCHOLARSHIPS  
YOU APPLY FOR,  
THE BETTER**

**THERE'S  
NOTHING TO  
LOSE...AND A LOT  
TO **\$\$\$GAIN\$\$\$****



## WHERE TO START APPLYING FOR SCHOLARSHIPS...



### **STUDENT FINANCIAL SERVICES SCHOLARSHIP SEARCH ENGINE**

### **WSU GENERAL SCHOLARSHIP APPLICATION**

**WSU OFFERS 700+  
SCHOLARSHIPS IN ONE  
APPLICATION! OPENS  
IN THE FALL, APPLY  
EVERY YEAR!**

**Due JANUARY 31...EVERY YEAR!**

**SCHOLARSHIPS ARE AVAILABLE FROM  
WSU, PRIVATE DONORS AND  
FOUNDATIONS. THERE ARE HUNDREDS OF  
THEM! USE THE LINK BELOW TO FIND  
AWARDS YOU CAN APPLY FOR!**

**[SCHOLARSHIPS.WSU.EDU](http://SCHOLARSHIPS.WSU.EDU)**

### **OTHER SCHOLARSHIP RESOURCES**

**WASHBOARD.ORG  
WSU ACADEMIC  
DEPARTMENT**



## TIPS AND TRICKS TO GETTING A SCHOLARSHIP!

**WE RECOMMEND  
YOU SPEND **ONE**  
HOUR PER WEEK  
APPLYING FOR  
SCHOLARSHIPS...  
OR APPLY FOR **40**  
SCHOLARSHIPS  
ANNUALLY.**

**TELL YOUR  
STORY...IN  
YOUR WORDS!**

**PROOFREAD  
AS GRAMMAR  
MATTERS!**

**CHECK WITH YOUR  
CLUB, GROUPS, AND  
COMMUNITY  
FOR  
**MORE**  
OPPORTUNITIES!**

**NEVER PAY FOR A  
SCHOLARSHIP  
SEARCH!**

