






Ste. Michelle Wine Estates Prosser, Washington Kyle Jones Summer 2016

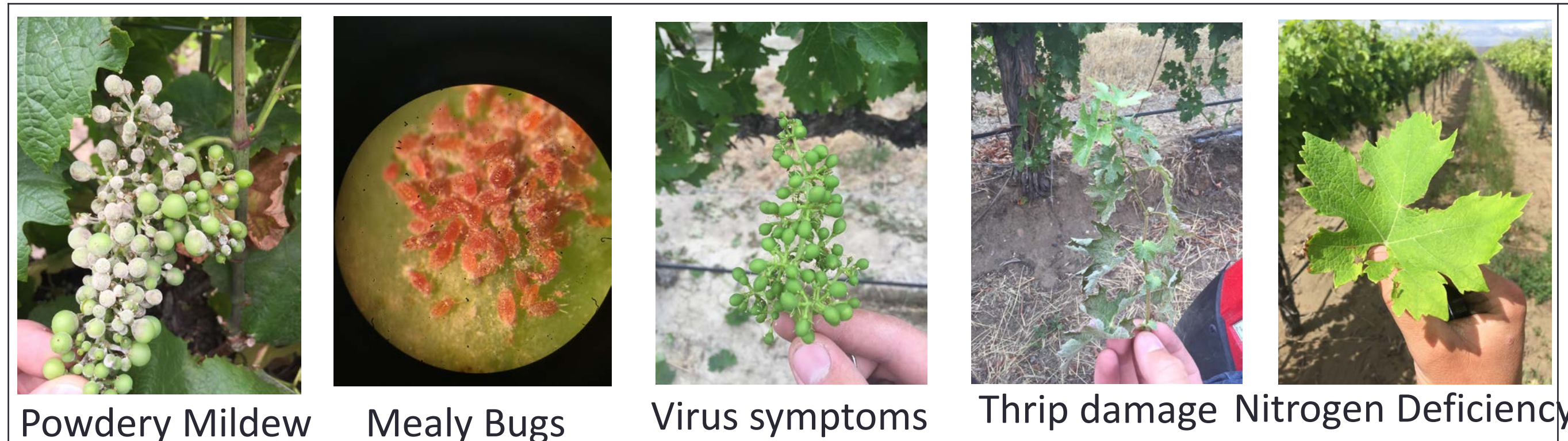


Ste. Michelle Wine Estates Viticulture Department

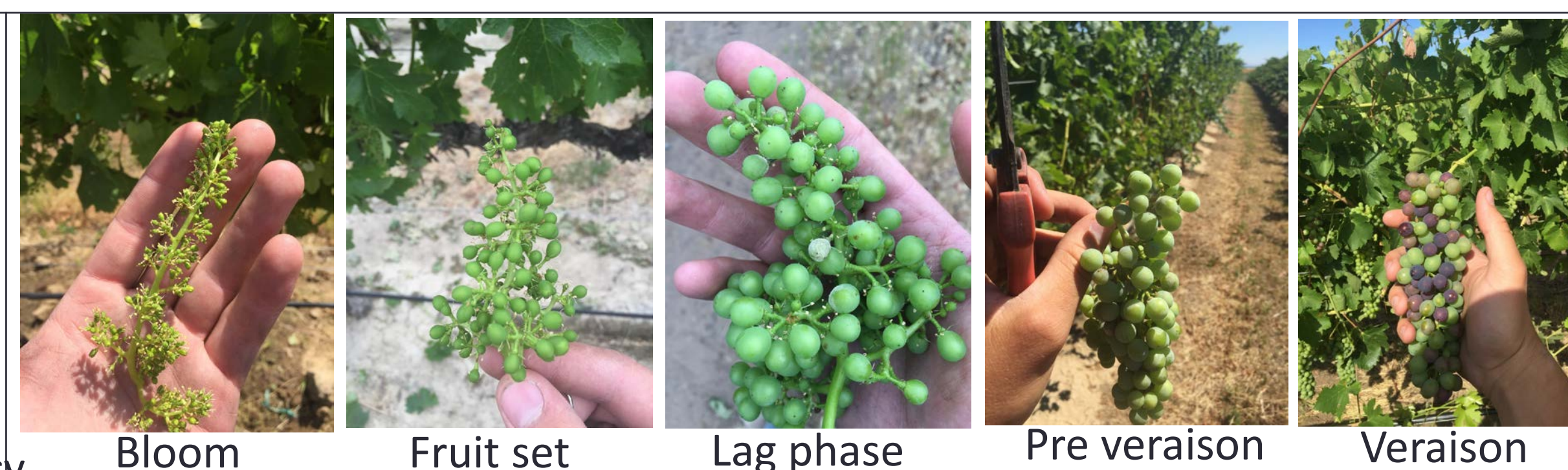
-  Production of high quality grapes from many areas throughout Washington State
-  Understanding different developmental phases of wine grapes to ensure the highest quality wine is produced
-  Working with a variety of growers from many different areas of Washington State to have a diverse variety and production outcome

Responsibilities

Pest and disease Scouting



Monitoring Phenology Points



Summary

- This has given me the background knowledge to become a successful grape grower in Washington State
- I have learned how to identify many pests and diseases involved with grape growing, and how to interact with growers in different situations in their vineyards.
- Working hard to learn as much as possible when given a great opportunity is key to achieving success.
- This internship has given me the opportunity to accept a full time position as a viticulture technician with Ste. Michelle Wine Estates.

- **Cluster counting**
- **Lag phase cluster weights**
- **Berry Weights**
- **Vine Weights**
- **Scouting: chemical injury, winter injury, Water stress**
- **Irrigation Management**

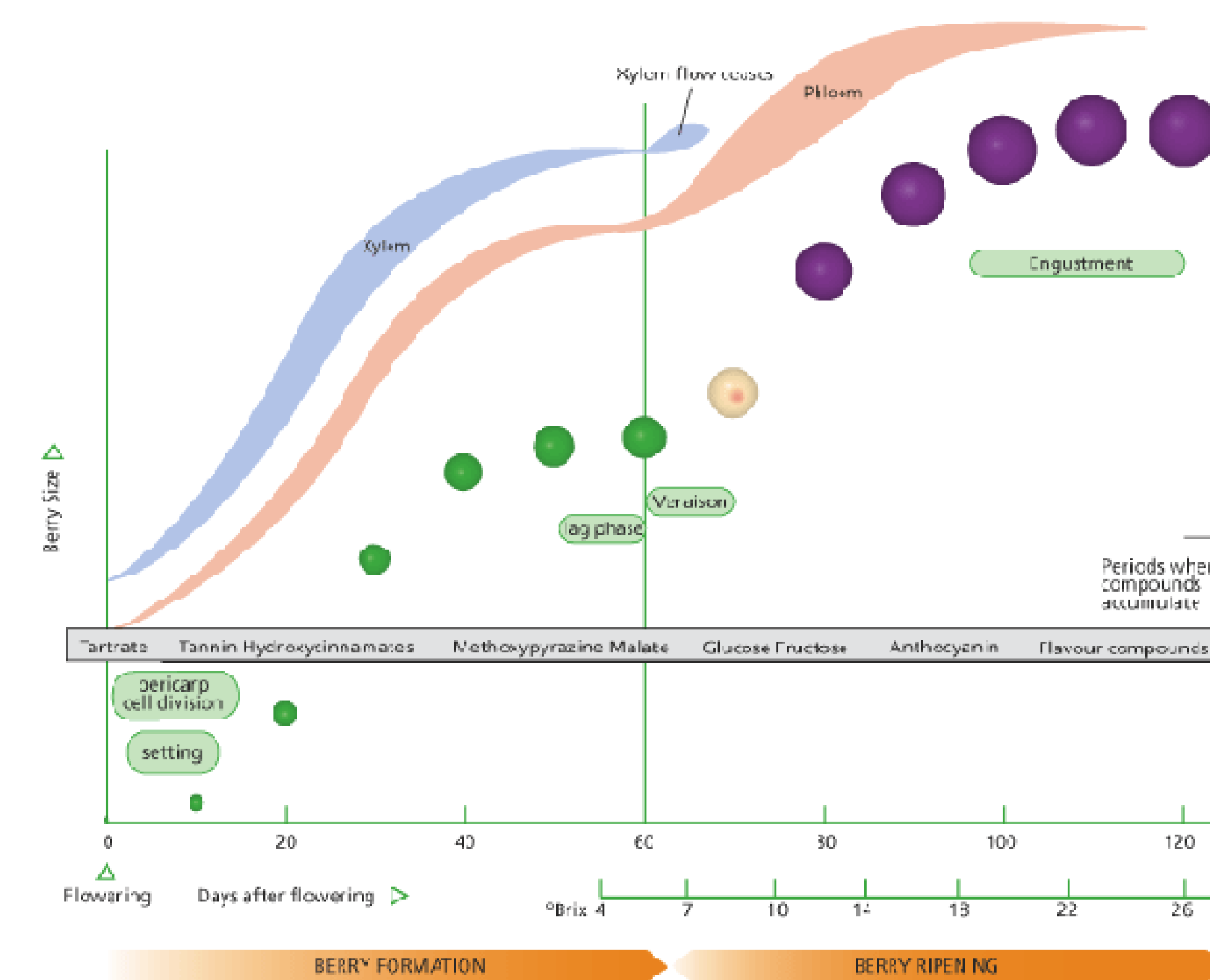


Figure 2: Diagram showing relative size and color of berries at 10-day intervals after flowering, passing through major developmental events (rounded boxes). Also shown are the periods when compounds accumulate, the levels of juice brix, and an indication of the rate of inflow of xylem and phloem vascular saps into the berry. Illustration by Jordan Koutouroumidis, Winetitles.