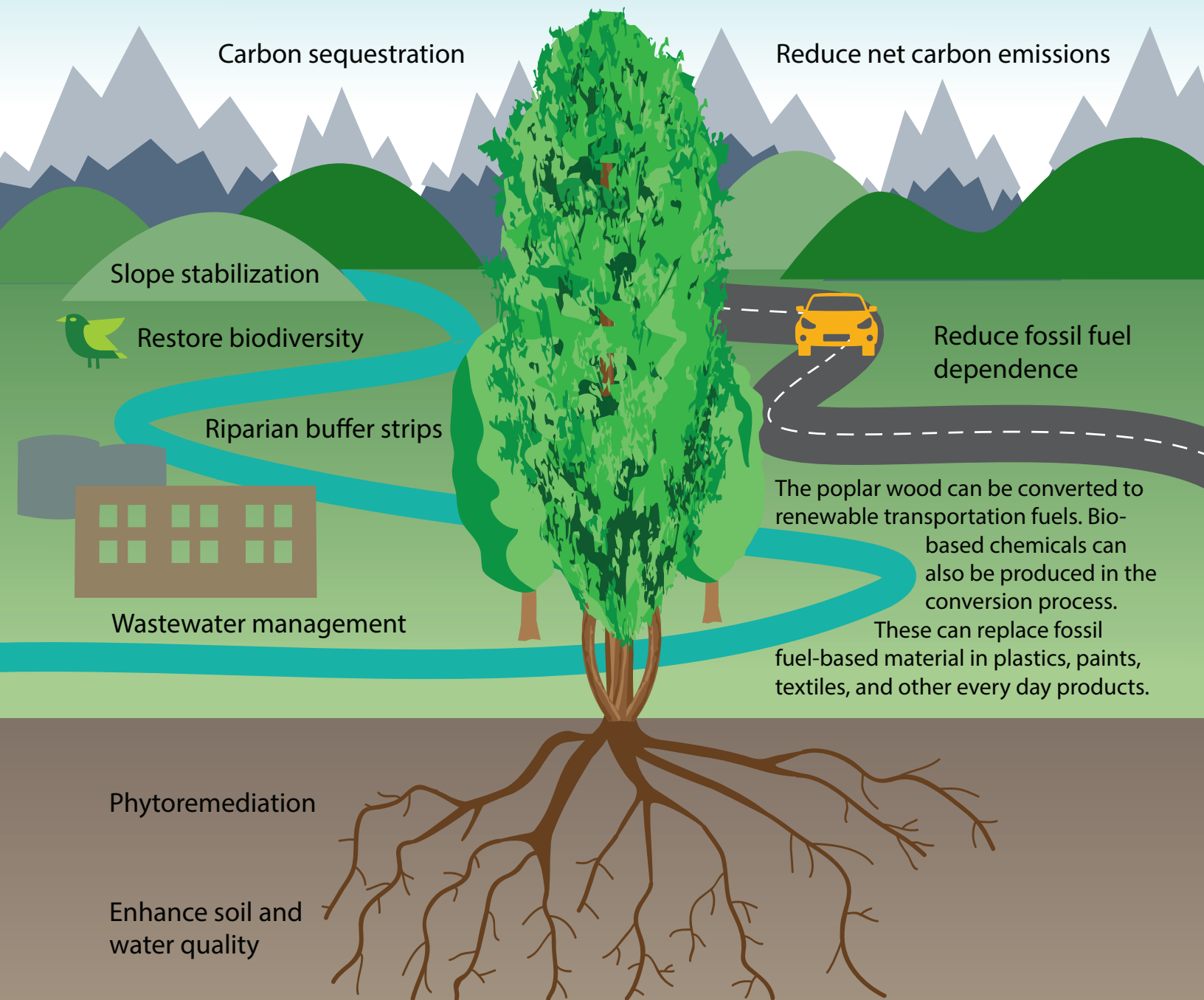


July 2016 Briefing Paper

Environmental Benefits of Growing Poplar

Poplar trees are useful in a variety of environmental applications in addition to being a promising bioenergy crop. Advanced Hardwood Biofuels Northwest is leading research to develop a renewable fuel and bio-chemical industry in the Pacific Northwest where poplar trees will be the primary feedstock.



Advanced Hardwood Biofuels Northwest integrates research, education, and extension to develop poplar-based biofuel and biochemical industries.

For more information contact Rick Gustafson,
University of Washington
(206)543-2790 or pulp@uw.edu
hardwoodbiofuels.org

