

Sustainable Transportation Fuels

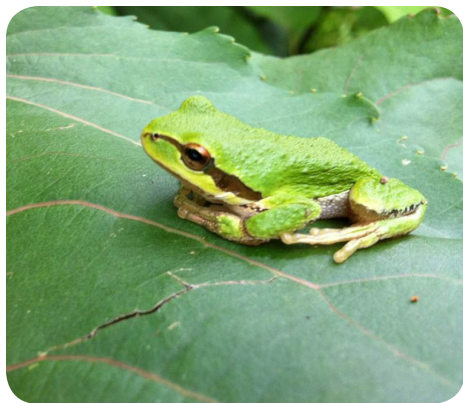


Advanced Hardwood Biofuels Northwest (AHB), a consortium of university and industry partners, is working to develop the foundation for biofuel and biochemical industries that produce renewable fuels and bioproducts from poplar trees sustainably grown in the Pacific Northwest. The AHB project is assessing biofuel production processes from different perspectives to ensure environmental, economic, and social sustainability.

AHB researchers are investigating sustainability in three key areas to understand:

Environmental Sustainability

- Carbon emission reductions through a Life Cycle Assessment
- Soil and water quality responses to poplar bioenergy cropping systems
- Life-cycle water usage
- Long-term impacts to wildlife and biodiversity



Economic Sustainability

- Rural development and job creation opportunities
- Best areas to grow poplar and develop commercial biorefineries
- Integration of poplar into existing agriculture
- Optimal biofuel supply chain logistics



Social Sustainability

- Public perceptions and attitudes toward biofuels and biorefineries
- Community acceptance of biofuel production and distribution facilities
- Poplar growers' needs, concerns, and previous experience with hybrid poplar



For more information contact: Dr. Rick Gustafson,
University of Washington, 206-543-2790, pulp@uw.edu or visit

hardwoodbiofuels.org



United States
Department of
Agriculture

National Institute
of Food and
Agriculture

This project is supported by Agriculture and Food Research Initiative (AFRI) Competitive Grant number 2011-68005-30407 from the USDA National Institute of Food and Agriculture (NIFA).