



WASHINGTON STATE  
UNIVERSITY

# EM Presentation to the WSU Faculty Senate

---

Saichi Oba, VPEM

October 20, 2022

# National Context...

**“Nearly 1.3 million students have disappeared from American colleges during the Covid-19 pandemic.”**



WASHINGTON STATE  
UNIVERSITY





**OVERALL SYSTEM ENROLLMENT**

Fall 2021	Fall 2022	% Change
29,843	27,539	-7.7%

*Fall 2022 Census Day Headcount*



# WSU Fall 2022 Census Day Enrollment

Campus	Student type	Fall 2022 enrollment	Change from fall 2021	% change
Everett	All	186	-58	-23.8%
	First-year*	5	2	66.7%
	Transfer	44	-25	-36.2%
Global	All	3,839	-230	-5.7%
	First-year	99	8	8.8%
	Transfer	527	7	1.3%
Pullman	All	17,827	-1287	-6.7%
	First-year	3,324	19	0.6%
	Transfer	866	-228	-20.8%

Campus	Student type	Fall 2022 enrollment	Change from fall 2021	% change
Spokane	All	1,424	-201	-12.4%
	First-year	1	-1	-50.0%
	Transfer	57	-23	-28.8%
Tri-Cities	All	1,430	-128	-8.2%
	First-year	179	-15	-7.7%
	Transfer	167	-3	-1.8%
Vancouver	All	2,833	-400	-12.4%
	First-year	389	-28	-6.7%
	Transfer	349	-107	-23.5%

\*Running Start entrants with direct transfer agreement (DTA) associate degree.

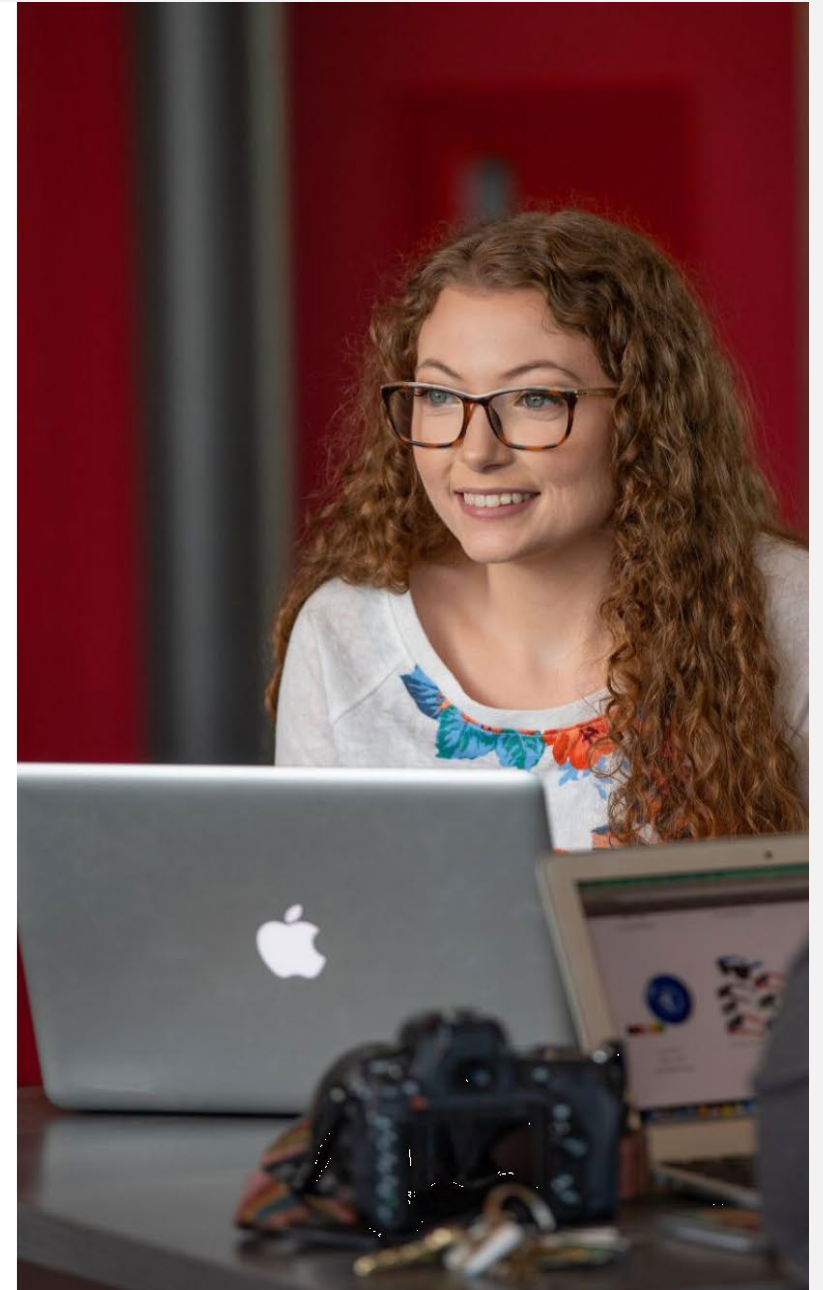
NOTE: numbers do not include the adjustments to enrollment for Spokane and Everett (counting additional entering undergraduates e.g., former students returning, non-degree, and post-baccalaureates).

ENROLLMENT MANAGEMENT

# Fall 2023

---

- CommonApp launched August 1, 2022
- Focus on transfer students
- Retention, retention, retention



# WSU System EM Goals

## **GOAL #1 ACCESS AND AFFORDABILITY**

WSU will work to remove systemic barriers to post-secondary education, prioritize equity, and create a community of belonging by improving the affordability of and access to programs across the university system.

## **GOAL #2 GRADUATION, COMPLETION AND STUDENT SUCCESS**

WSU will intentionally build and proactively implement student support programming and services to ensure students can access the resources necessary to complete their degree in a timely fashion.

## **GOAL #3 ENROLLMENT TARGETS**

WSU will strategically optimize enrollments to meet the evolving needs of the institution and its student communities.

## **GOAL #4 IMPROVE INSTITUTIONAL EFFECTIVENESS *or Collaboration for flexible, innovative & cost-effective solutions***

WSU will expand collaboration in the WSU system to create flexible, innovative, and cost-effective solutions to systematic enrollment challenges.



**WASHINGTON STATE**  
UNIVERSITY

# Discussion

—

Thank you!