



WASHINGTON AND NORTHWESTERN WASHINGTON AGRICULTURE

Washington State

Number 1

U.S. Producer:

- ❑ Apples
- ❑ Blueberries
- ❑ Hops
- ❑ Pears
- ❑ Spearmint Oil
- ❑ Sweet Cherries

Number 2

U.S. Producer:

- ❑ Apricots
- ❑ Asparagus
- ❑ Grapes
- ❑ Potatoes
- ❑ All Processed Raspberries

Number 3

U.S. Producer:

- ❑ Dried Peas
- ❑ Lentils
- ❑ Onions
- ❑ Peppermint Oil



Washington State

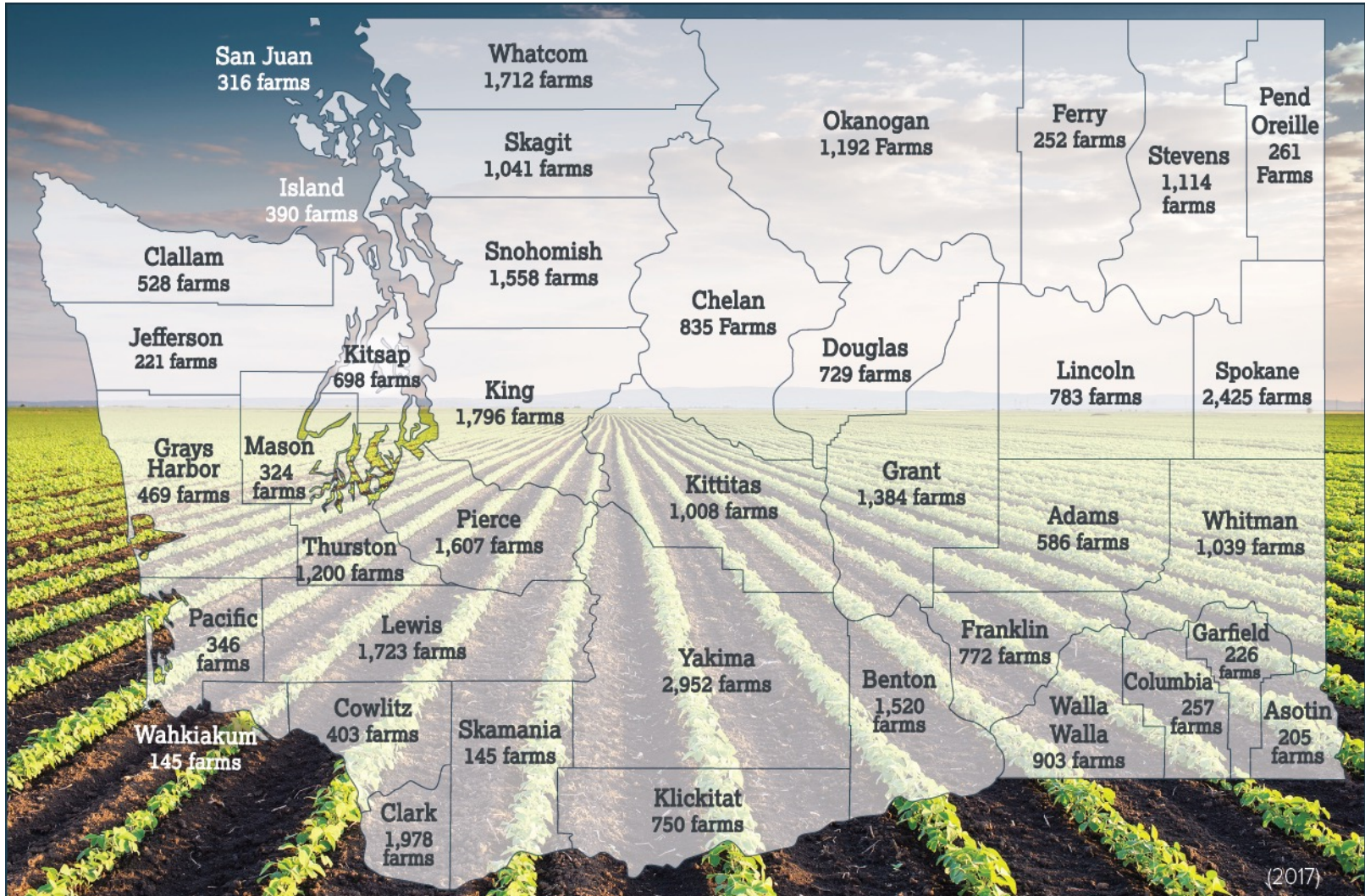
Top 10 Commodities in WA (2020)

1. Apples (\$2b)
2. Milk (\$1b)
3. Wheat (\$948m)
4. Potatoes (\$753m)
5. Cattle (\$692m)
6. Cherries (\$561m)
7. Hay (\$508m)
8. Hops (\$445m)
9. Grapes (\$302m)
10. Eggs (\$220m)

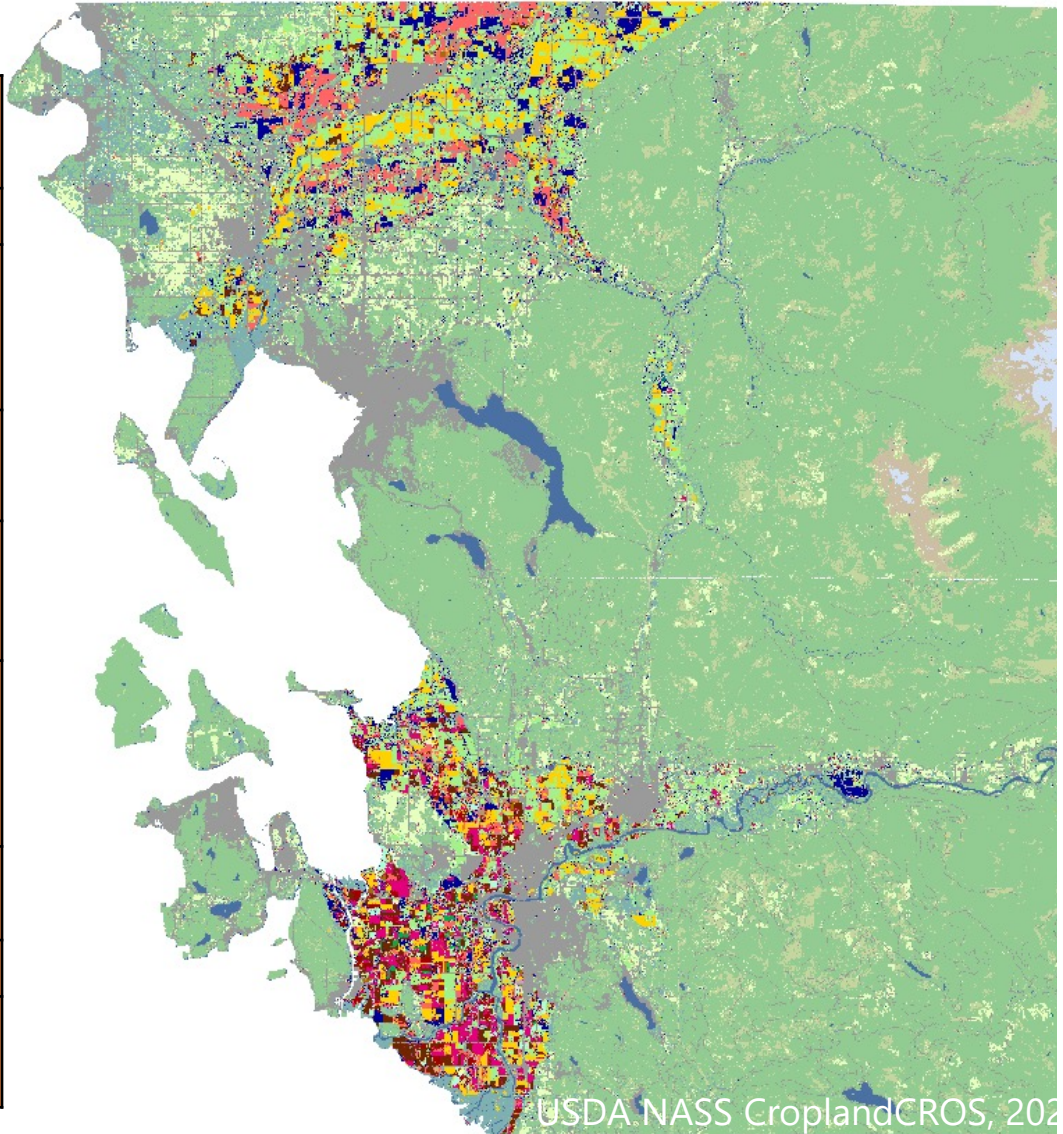
Top Export Products

Fish/Seafood	\$1B	Canada, Japan, China
Frozen French Fries	\$784M	Japan, South Korea, Taiwan
Wheat	\$663M	Philippines, Yemen, Japan
Apples	\$637M	Canada, Mexico, Vietnam
Hay	\$508M	Japan, China, South Korea

Washington State



NW WA Agriculture (Skagit/Whatcom)

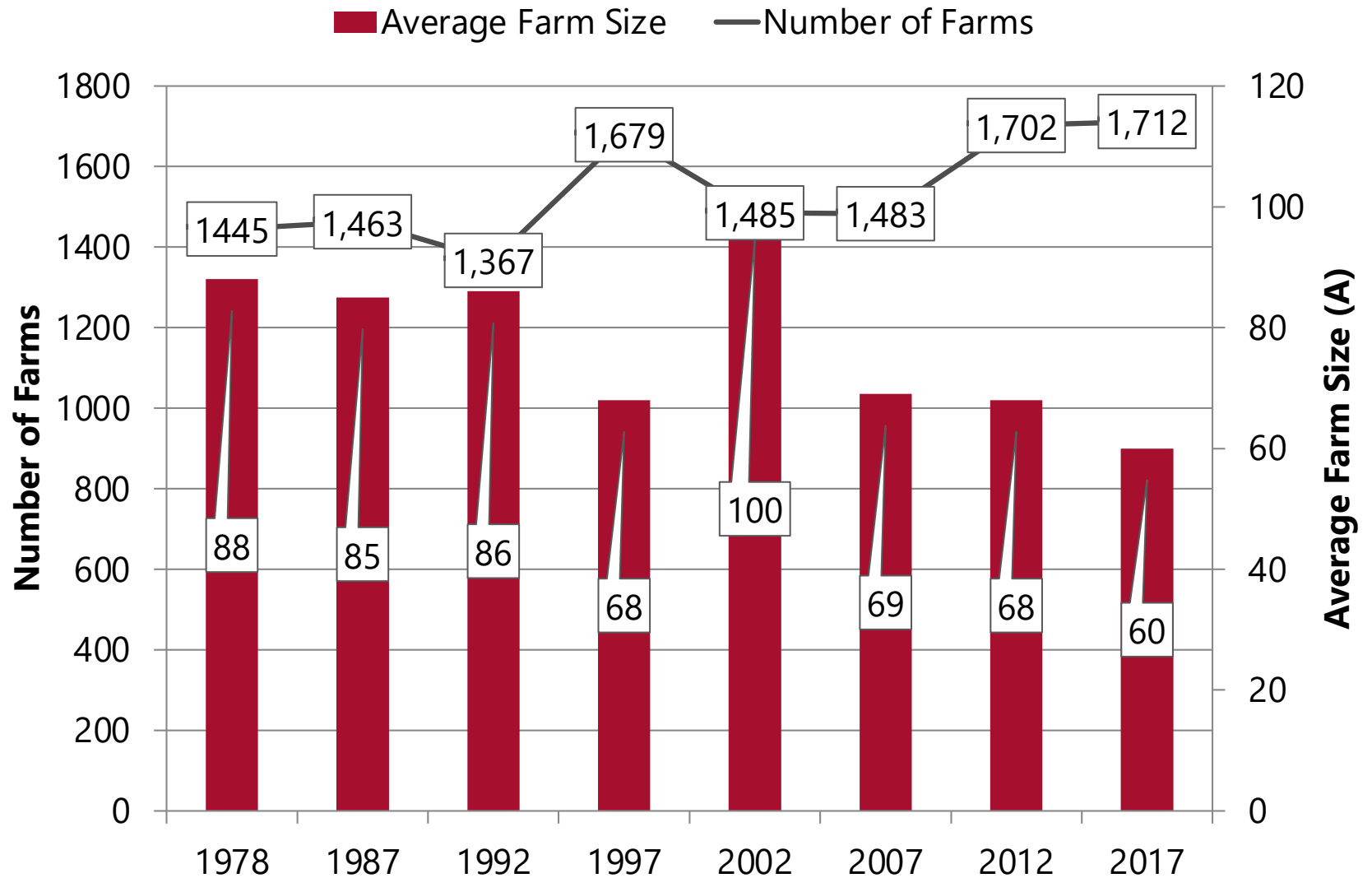


	2017 value (\$1,000)	
	Whatcom	Skagit
Cattle and calves	25,399	9,778
Christmas Tree and short rotation woody crops	682	58
Fruits, tree nuts, and berries	114,626	21,905
Milk and other dairy products from cows	180,488	59,506
Nursery, greenhouse, floriculture and sod	19,226	73,905
Other crops and hay	4,842	3,192
Poultry and eggs	.	.
Vegetables, melons, potatoes	11,803	86,674

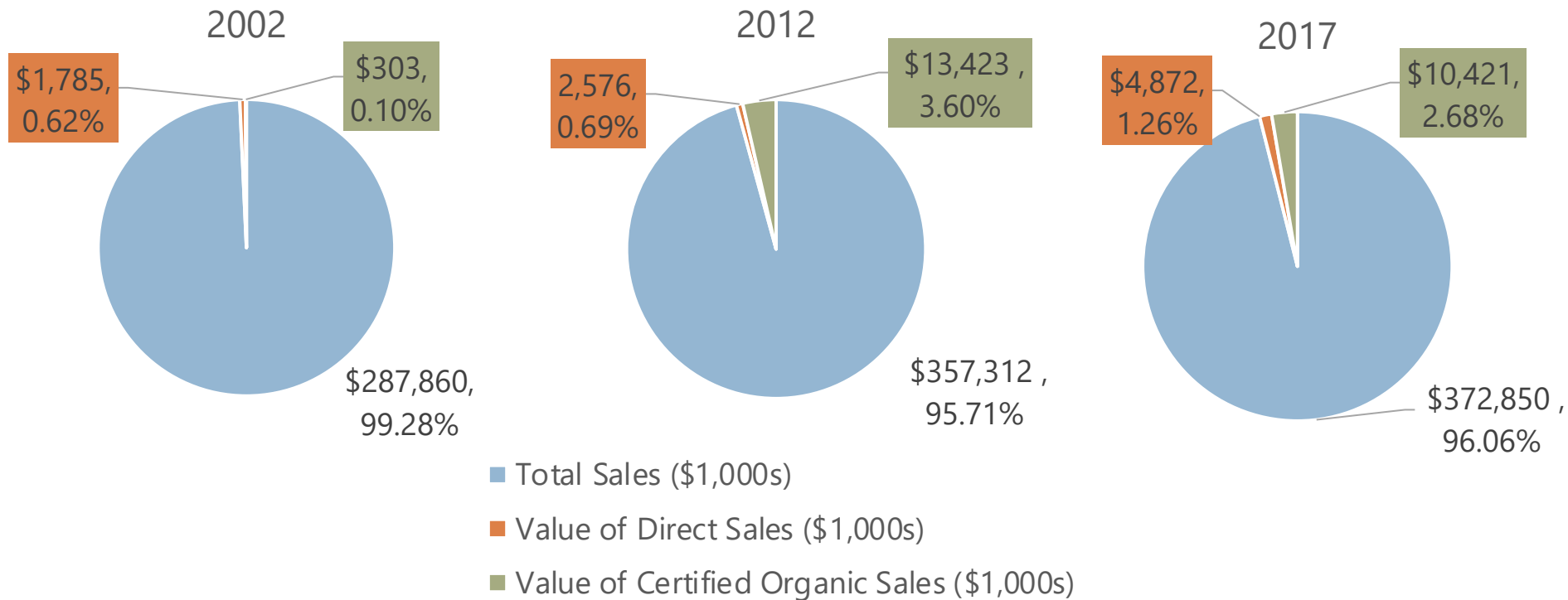
USDA NASS, 2018

USDA NASS CroplandCROS, 2022

Whatcom County



Whatcom County



Whatcom County

Value

- Livestock, poultry, and products (\$218m)
 1. Milk from cows (\$180m)
 2. Cattle and calves (\$25m)
 3. Aquaculture (\$2m)
- Crops (\$154m)
 1. Fruits, trees, berries (\$114m)
 2. Nursery, greenhouse, floriculture, sod (\$19m)
 3. Vegetables, melons, potatoes/sweet potatoes (\$11m)

Acreage

1. Forage – hay/haylage (42,807A)
2. Land in berries (27,588A)
 - Raspberries (12,841A)
 - Blueberries (14,610A)
3. Corn for silage/greenchop (16,078A)



NW Washington Agriculture Infrastructure

- ❑ Northwestern Washington extensive infrastructure
 - ❑ Diversity of job opportunities
- ❑ Relatively easy access to export markets
- ❑ Access to deep seaports
- ❑ Other areas (e.g., south sound) trying to re-build/expand



