



Plug types for Fresh Strawberry production in Washington and Pacific NW

Wendy Hoashi-Erhardt
Small Fruit Plant Breeding,
Washington State University

The problem: no plug plants available

- Fresh market – whether day-neutral or Junebearing – could benefit from plug plants for fall planted
- Tissue cultured plants – micropropagated could be part of the answer
- Plug plants from conventional nursery is expensive and time consuming + just plain not available
- Micropropagated plants or micropropagated mother plants could cut time and help control viruses.

The problem: TC plants behave weird - sometimes

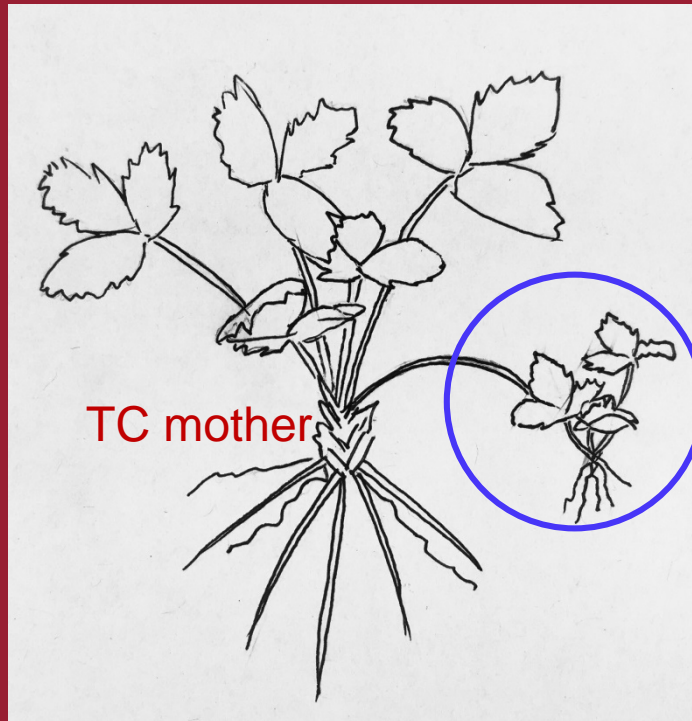
- Some studies show excessive flowering, misshapen fruit, small berry size
- A few showed too much runnering
- Seems dependent on cultivar
- Dependent how long it was in culture
- Several studies showed no statistical difference

The objective: test how TC Albion plugs perform and if TC Albion is a viable nursery avenue

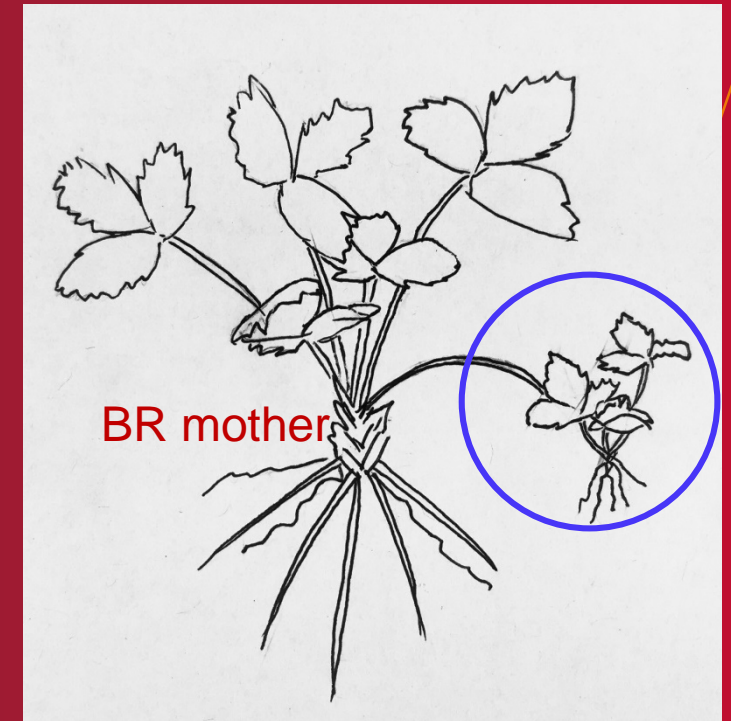
TC Plant



TC Runner

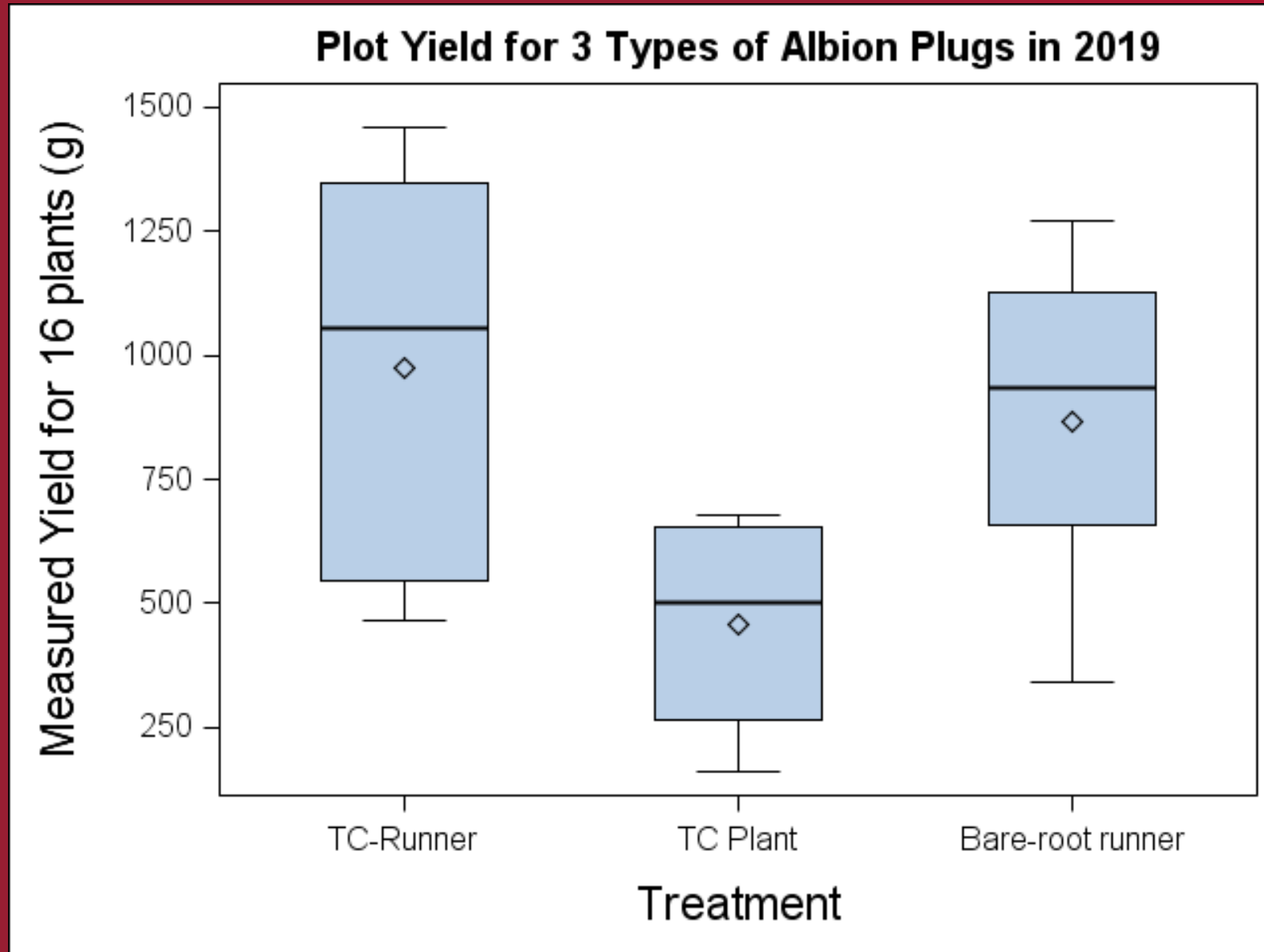


Bareroot runner

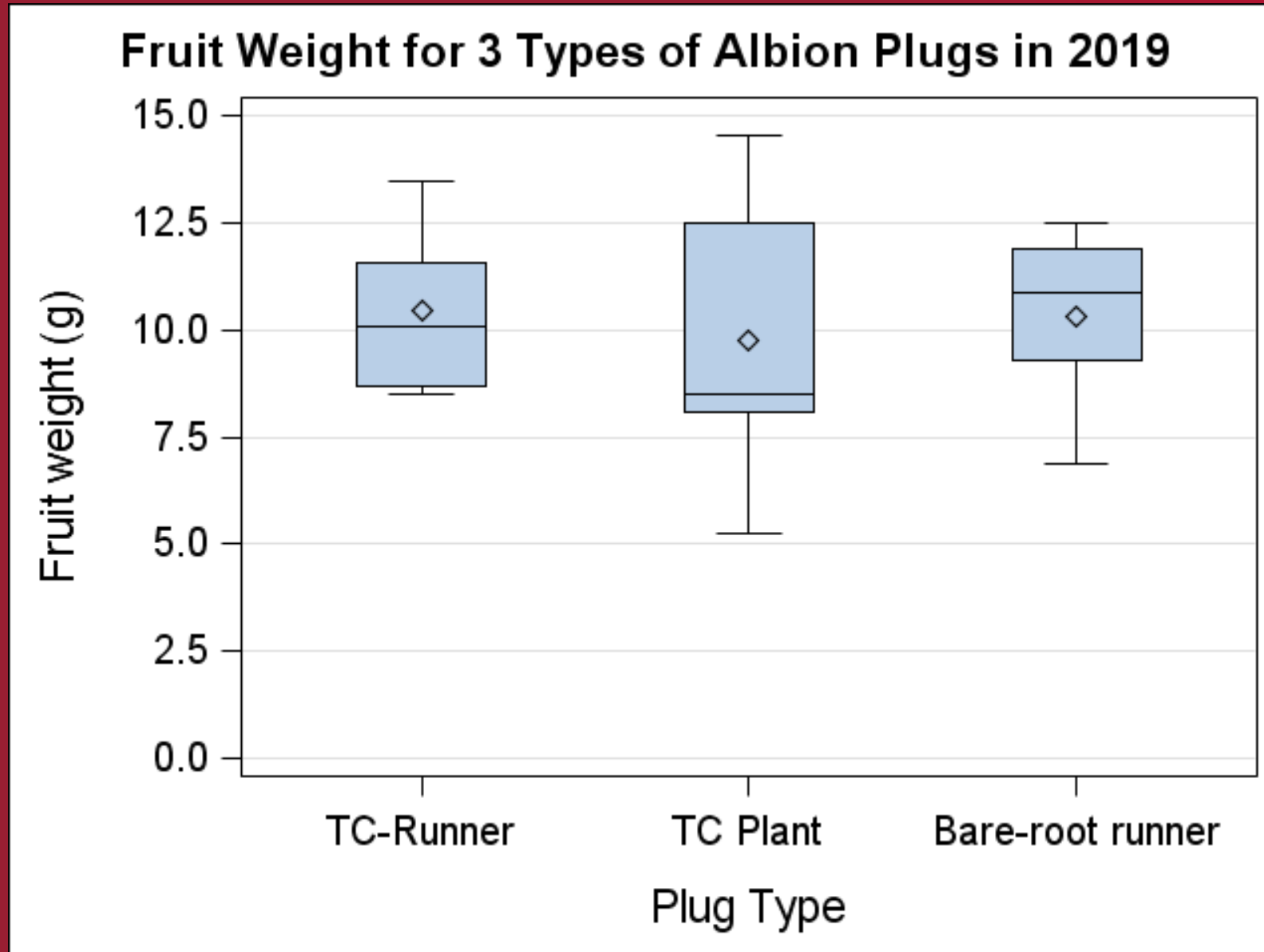


Evaluate yield, fruit size, runnering

Results

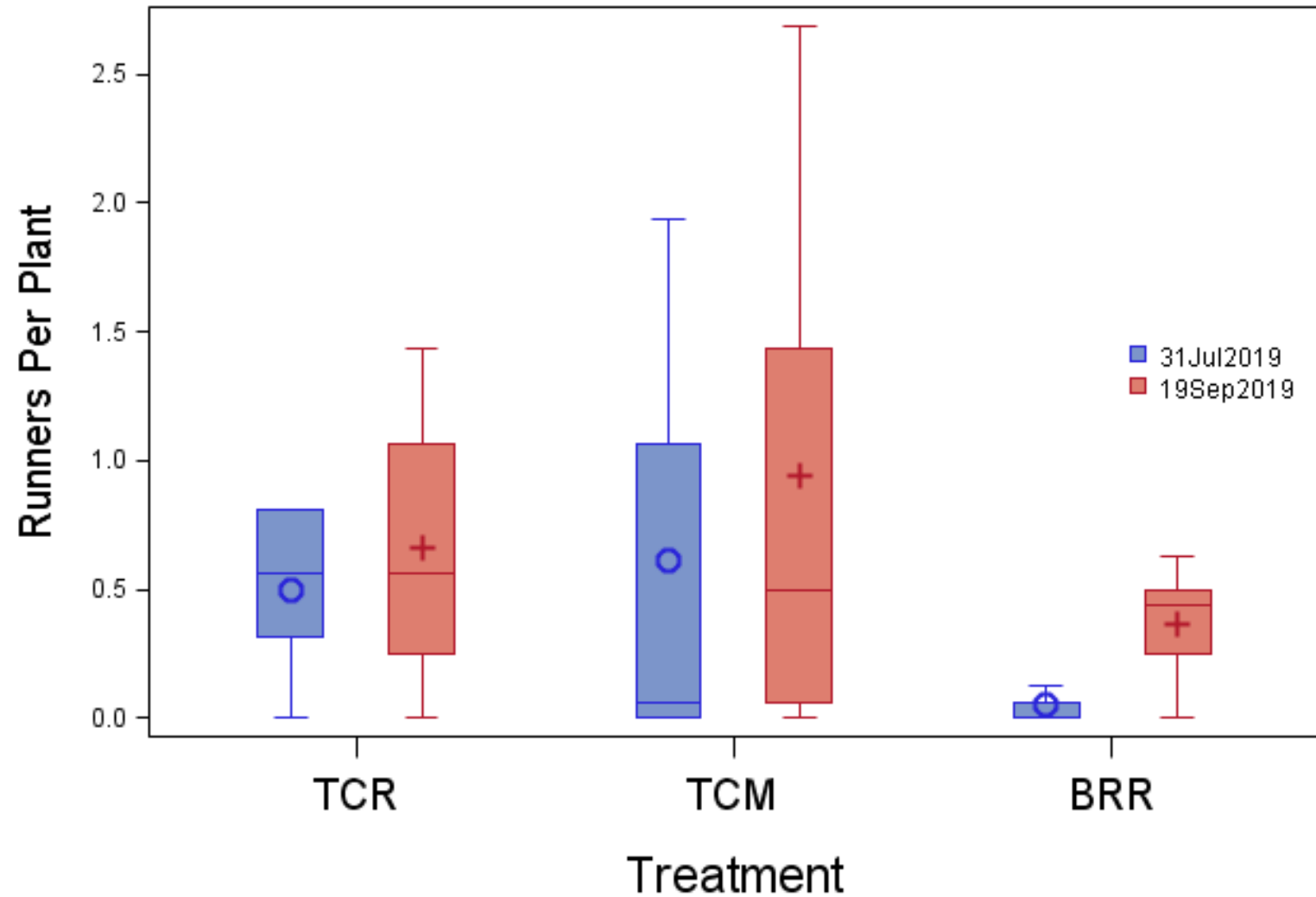


Results



Results

Runners of Different Nursery Plug Types on Two dates





Thank you!

WSDA Specialty Crop Block Grant Program
Oregon Strawberry Commission
University of California

Northwest Berry Foundation
NorCal Nursery