



# FIVE THINGS TO KNOW BEFORE YOU IRRIGATE

If you are looking for land to farm in Clallam County, you'll probably want land that comes with irrigation water. Irrigation, especially commercial irrigation, is not allowed everywhere. Before committing to a piece of property, answer the following questions to determine whether you can (or should) irrigate.

## #1. Do I need to irrigate?

Water is a scarce resource in the summer, and it should be managed conservatively. **Depending on your situation, irrigation may not be necessary.**

- If you are **growing crops** commercially or for home consumption, irrigation is nearly essential for good yields, so you probably need to irrigate.
- If you are establishing new landscape plantings, you probably need to irrigate. Once established, a thoughtfully-designed and maintained landscape with low water-demand plants like our native trees and shrubs and thick mulch, can survive with little or no irrigation. **Allow your lawn to go dormant** in summer, only irrigating once for each month without significant rainfall. (see <http://clallamcd.org/conservation-around-the-house/>)

*Consider irrigation a privilege rather than a right, even if you have the right.*

## #2. Do I have a legal right to irrigate?

For all intents and purposes, commercial irrigation requires you have a water right issued by the Washington State Department of Ecology or be served by an irrigation district or company (which hold water rights for their users). A water right specifies the source of water, when, where, how much water you are entitled to, and the purpose of water use.

## #3. Am I served by an irrigation district or company?

In the Dungeness Valley, between Johnson Creek and Siebert Creek there are four irrigation districts and three companies that hold water rights from the Dungeness River and McDonald Creek. These districts and companies provide water to their constituents for **irrigation from April 15 to September 15** and sometimes for livestock the remainder of the year. Irrigation districts are special purpose units of local government. Irrigation companies are private not for profit organizations.

- If your land is within the boundaries of an **irrigation district** (see map), you are legally allowed to use irrigation district water. Unfortunately, due to land subdivisions over the decades, some parcels of property do not have access to a district's water. If you must have irrigation district water, try to work with your neighbors to get permission to pipe the water to your land.
- If your land is located within the service area of an **irrigation company** (see map), you must own shares in the company in order to use the water. Not every company has shares available for new users. Check with a company representative (see *Irrigation Contact List*) to find out if new shares can be purchased.



# FIVE THINGS TO KNOW BEFORE YOU IRRIGATE

## #4. Can I irrigate from my private well?

It depends. **If you do not have a water right and are not served by an irrigation district or company, your irrigation rights are very limited.**

- All wells put to use after January 1, 2013 in the **Dungeness Water Rule area** (DWR area = Bell Creek watershed to Bagley Creek watershed) require a mitigation certificate from the Washington Water Trust (<http://www.washingtonwatertrust.org/water-exchange>).
  - Indoor usage is a \$4,000 mitigation fee. This allows for up to 150 gallons per day.
  - Basic Outdoor usage is a \$4,000 fee. This allows you to irrigate a 50 ft<sup>2</sup> area outdoor such as turf or landscaping needs. This allows for up to 210 gallons per day.
  - Additional \$4,000 fee is required for animals (ungulates only) up to 15 animals. This does not apply to poultry or dogs or cats. This allows for up to 180 gallons per day.
  - No outdoor water use from newer permit exempt wells is allowed uphill of the irrigation network (see map). However, you are allowed to install cisterns to collect roof runoff water to irrigate a small garden or provide water for livestock.
  - A water right is required to irrigate with water from a pond.
- For all other areas of Clallam County, a permit exempt private well entitles you to withdraw a **maximum of 5,000 gallons per day (GPD) for all water needs**. Landscape and garden irrigation is limited to ½ acre, but commercial use (including irrigation) is allowed up to 5,000 GPD. Landscape irrigation over ½ acre or withdrawals greater than 5,000 GPD require a water right. ***These water uses and allowances are permitted in the DWR area only if supported by evidence of pre-2013 usage, even for pre-existing wells.*** (see [http://www.ecy.wa.gov/programs/wr/comp\\_enforce/gwpe.html](http://www.ecy.wa.gov/programs/wr/comp_enforce/gwpe.html))
- If you are served by a city, the PUD or a community water system, you are subject to their rules and regulations. ***Group B community systems served by permit exempt wells are limited to a total of 5,000 GPD and a total of ½ acre of landscape irrigation.***

## #5. How much water do I need?

**How much water you use depends on how much you need.** How much water you need depends on the crop you are growing and the climate. Soil type (texture) determines the amount of water you apply per irrigation and how frequently you need to irrigate. Contact Clallam Conservation District for irrigation requirements for specific crops and application schedules for specific soil types. For reference purposes, optimum irrigation for grass hay/pasture totals about 18 inches over the irrigation season and raspberries need about 24 inches. **Regardless of your water rights, it is illegal to waste water.**

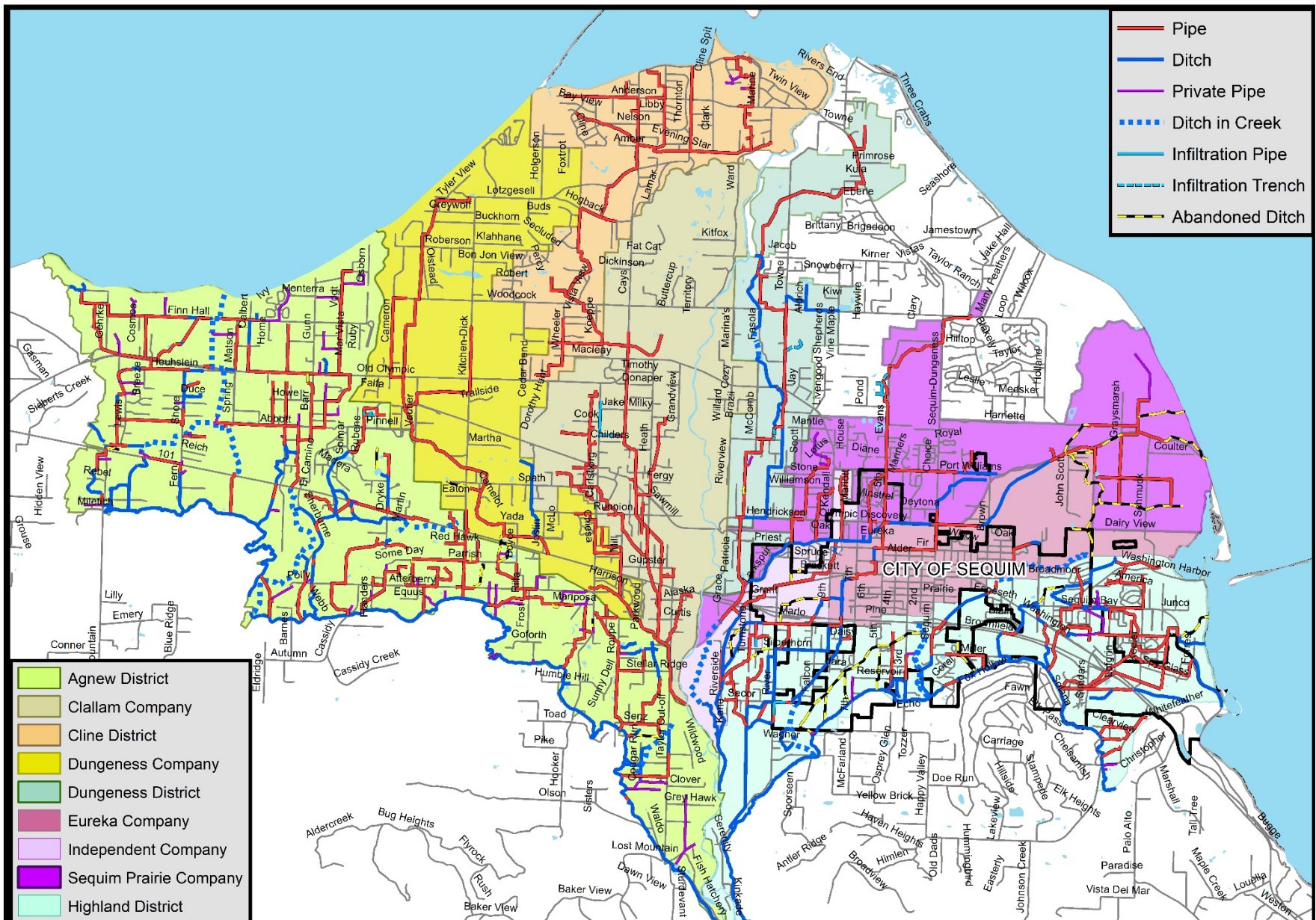
- **If you have a water right**, your right specifies how much water you are entitled to (instantaneous rate and annual total) and when you can divert it (from a surface water source) or withdraw it (pump from a groundwater source).
- **If you are served by an irrigation district or company**, you are allowed to take water at a maximum rate of 0.02 cubic feet per second or just under nine gallons per minute. You are



# FIVE THINGS TO KNOW BEFORE YOU IRRIGATE

only allowed to irrigate up to one acre of lawn and landscaping and ponds are prohibited unless necessary to pump from.







# DUNGENESS RIVER AGRICULTURAL WATER USERS ASSOCIATION

## 2019 CONTACT LIST

*\*Indicates primary contacts*

ORGANIZATION & CONTACT	TITLE	PHONE
<b>Agnew Irrigation District</b>		
	*Message Machine	360-683-4331
Fred Spring	<b>Chairman</b>	
Jerry Schmidt	Director	
Bob Yaun	Maintenance Supervisor	
Myla Reid	<b>Secretary</b>	
<b>Clallam Irrigation Association (Company)</b>		
Danny Smith	<b>President*</b>	360-808-2581
Debra Danielson	<b>Secretary*</b>	360-912-3939
Balyn Rose cdditchwalker@gmail.com	<b>Ditchrider*</b>	360-640-9785
<b>Cline Irrigation District</b>		
Ken Davidson	Director	360-582-1834
Balyn Rose cdditchwalker@gmail.com	<b>Ditchrider*</b>	360-640-9785
Kim Moulson	<b>Secretary*</b>	360-681-3251
<b>Dungeness Irrigation District</b>		
Dave Howat	<b>President*</b>	360-461-9242
Ron Pullam	Ditchrider	360-670-2263
Patrice Johnston	<b>Secretary*</b>	206-850-3276
<b>Dungeness Irrigation Group (Company)</b>		
Gene Adolphsen	<b>President*</b>	360-683-7318
Christi Jolly	Secretary	425-239-2845
Jason Smith	Ditchwalker	541-571-0047
<b>Highland Irrigation District</b>		
Fred Grant	<b>President*</b>	360-683-3194
Roberta Murillo	Secretary	360-683-3619
Richard Krebsbach	Ditchrider	818-264-8858
<b>Sequim Prairie Tri-Irrigation Association (Company)</b>		
Gary Smith, Director	<b>President*</b>	360-460-7337
Sara Blake, Director	Secretary/Treasurer	360-683-5649
Pat McIntyre	Ditchrider	360-808-7847
<b>DUNGENESS RIVER AGRICULTURAL WATER USERS ASSOCIATION</b>		
<b>660 North Blake Ave., Sequim, WA 98382</b>		
Ben Smith	<b>President*</b>	360-460-9499
Gene Adolphsen	<b>Vice President*</b>	360-683-7318
Sara Blake	Secretary/Treasurer	360-683-5649
Brian Edminton*	WDFW Fish Screen Maintenance	360-972-0698