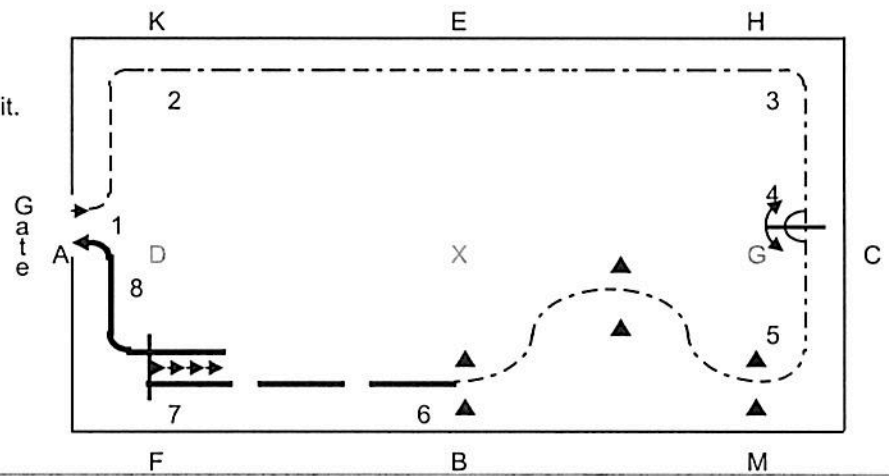


REINSMANSHIP

BRONZE MEDAL

PATTERN # 1

1. AK Collected trot
2. KEH Extended Trot, working trot, Extended Trot
3. HC Working trot, halt
4. C Pivot 180-degrees right, then left
5. CMB Working trot through three gates (cones)
6. BF Lengthened walk, halt
7. F Back four steps
8. FA Walk on a loose rein /exit.

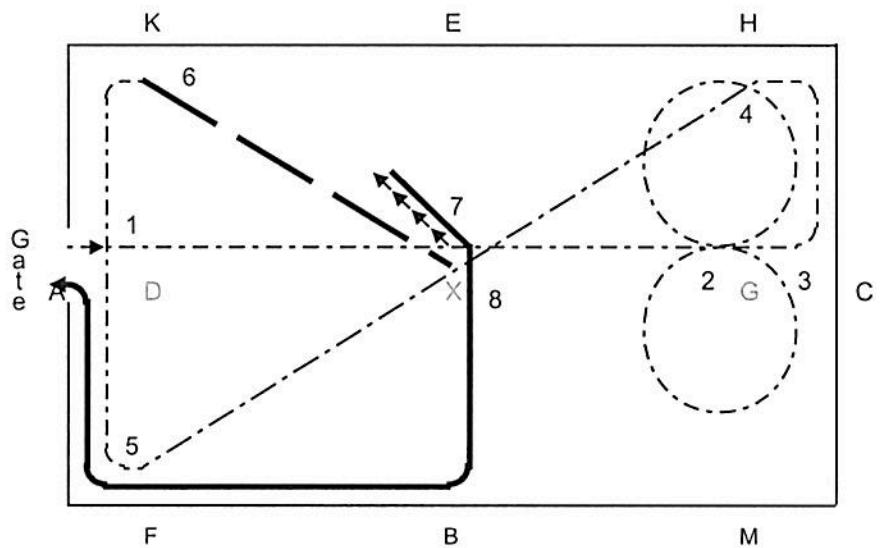


REINSMANSHIP

BRONZE MEDAL

PATTERN # 2

1. AG Working trot
2. G Execute figure eight, right circle first, working trot
3. GCH Working trot
4. HXF Extended Trot
5. FAK Working Trot
6. KX Lengthened walk
7. X Back four steps
8. XBFA Walk on a loose rein/ exit

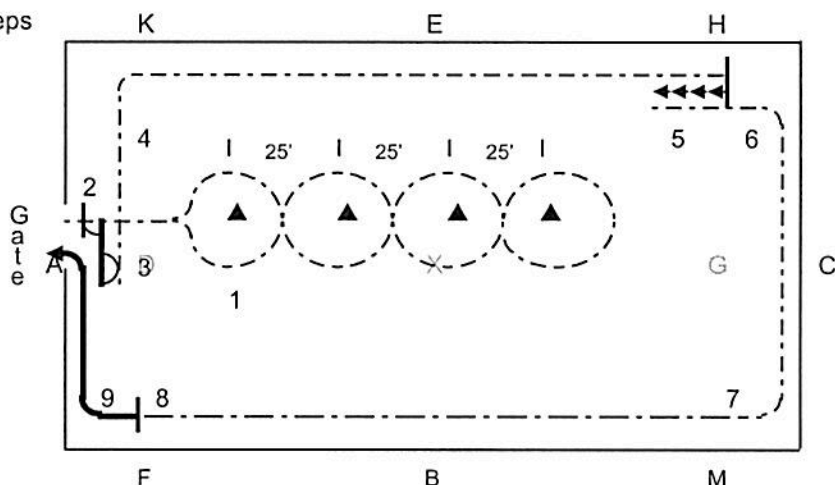


REINSMANSHIP

SILVER MEDAL

PATTERN # 1

1. AA Collected trot through a serpentine of four cones (past X and 25' apart) up and back to A
2. A Halt (facing gate)
3. A Pivot 90-degrees left, walk four steps, pivot 180-degrees left
4. AKEH Working trot
5. H Halt 10 sec. Back four steps
6. HM Working trot
7. MBF Extended trot
8. F Halt
9. FA Walk on loose rein/ exit
- 10.

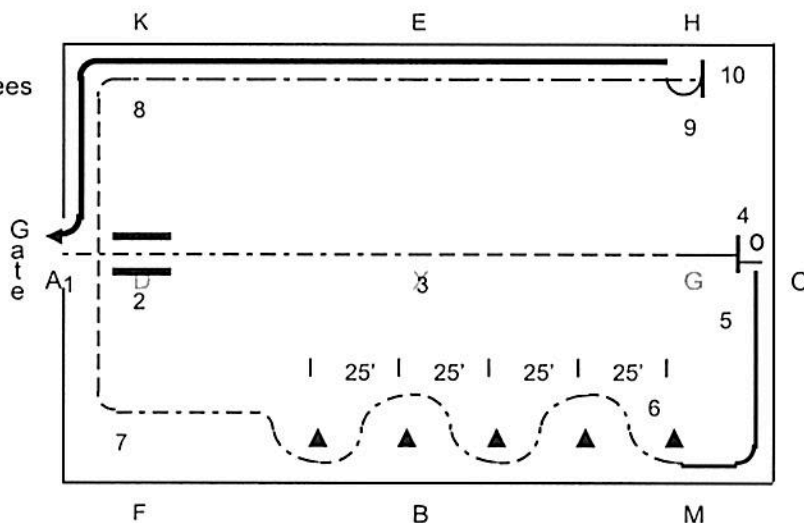


REINSMANSHIP

SILVER MEDAL

PATTERN # 2

1. AD Working trot
2. DX Left wheel through two ground poles – working trot
3. X Collected trot
4. C Halt, pivot 450-degrees
5. CM Walk
6. MBF Working trot a five cone serpentine (25' apart)
7. FAK Collected trot
8. KEH Extended trot
9. H Halt 10 sec, pivot 180-degrees right
10. HEKA Walk on a loose rein. Exit



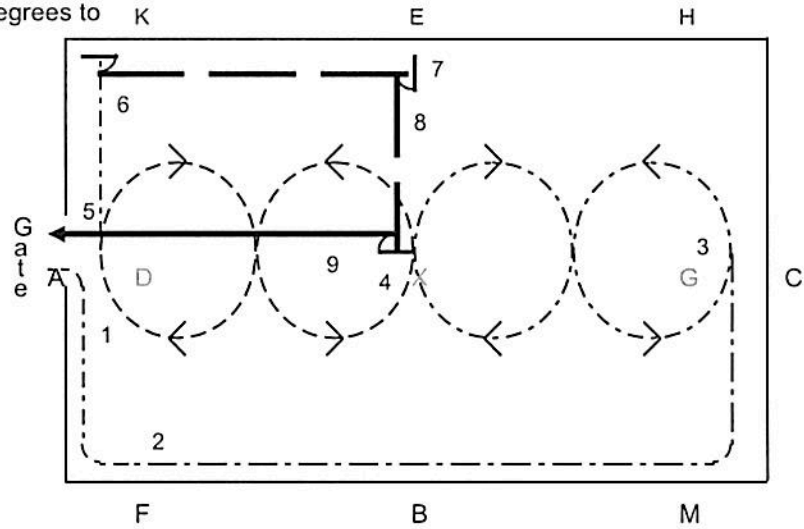
REINSMANSHIP

SILVER MEDAL

PATTERN # 3

1. AF Enter at A Working trot to F
2. FBMC Extended Trot
3. CGX At C do a figure eight at a working trot first to the left (CG, CG) and then to the right (GX, GX)
4. XDA Perform a figure eight at a collected trot first to the left (XD, XD) and then to the right (DA, DA)
5. A to Corner Working Trot, Halt Pivot 90-degrees to the right

6. Corner to E Lengthened walk
7. E Halt, pivot 90-degrees right
8. EX Lengthened walk to X halt
90-degree pivot right
9. XDA Walk on a loose rein to exit



REINSMANSHIP GOLD MEDAL REQUIREMENTS

For Reinsmanship, each contestant shall perform a demonstration pattern of not less than three minutes or more than four minutes. Pattern must include at least one item from each of the six sets listed below. Tests may be performed in any order and may be repeated. Contestants must prepare and provide at least two copies of the pattern he/she plans to demonstrate in writing, to be turned in for approval to the show office at time of registration. The pattern should be the member's original design. It should not be the same pattern as any pattern included in the Rules/Medals publications or posted before or at the show. Medals coordinator or his/her designee shall verify that all elements are included. The judge may ask for additional tests.

SET 1

- Walk.
- Lengthened walk.

SET 2

- Back.
- Halt.

SET 3

- Working trot.
- Extended trot.

SET 4

- Figure eight.
- Cones.

SET 5

- 90-degree pivot.
- 180-degree pivot.

SET 6

- Wheel through poles.
- Collected trot.

NOTES:

REINSMANSHIP

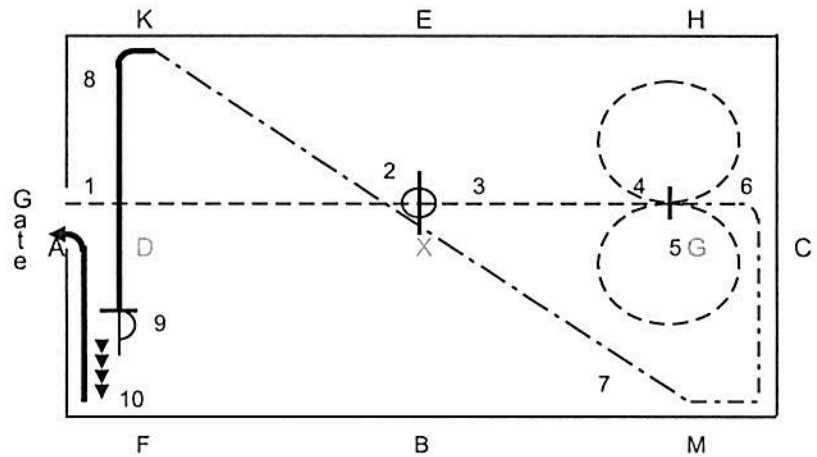
SUPREME MEDAL

PATTERN # 1

1. AX Collected trot, halt
2. X Pivot 360-degrees
3. XG Collected Trot
4. G Figure eight (either direction) using the one handed driving method
5. G Halt, Proceed using two handed

driving method at a working trot

6. GCM Working Trot
7. MK Extended Trot
8. KAF Walk
9. F Halt, pivot 180-degrees left, back four steps
10. FA Walk on a loose rein. Exit

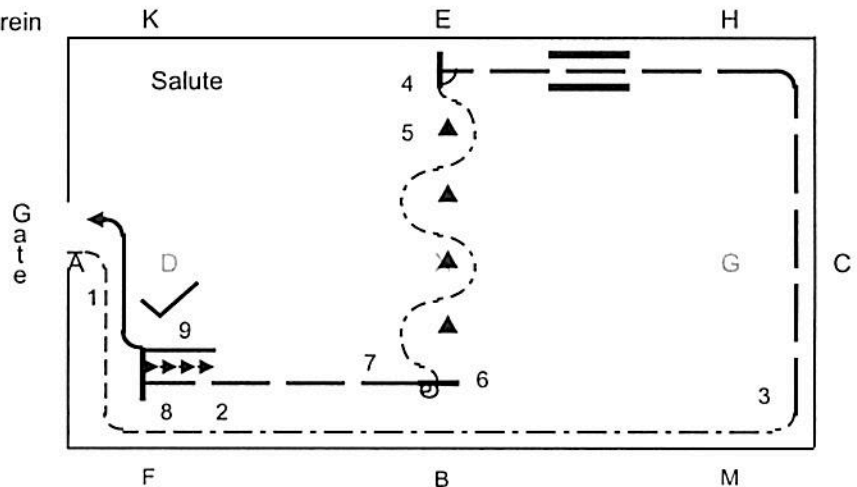


REINSMANSHIP

SUPREME MEDAL

PATTERN # 2

1. A Collected Trot
2. FM to Comer Extended Trot
3. Corner to E Lengthened walk with right wheel between two ground poles
4. E Halt, pivot 90-degrees left
5. EXB Working trot four cone serpentine
6. B Halt, pivot 450-degrees
7. BF Lengthened walk
8. F Halt, back four steps, pull forward four steps, halt and salute
9. FA Walk to exit on a loose rein



REINSMANSHIP

SUPREME MEDAL

PATTERN # 3

1. AFM Extended trot
2. MCG Working trot, figure eight to the right, then left and left 3/4 of the way to C
3. CHE Collected trot
4. E Halt, 90-degree pivot left
5. EX Lengthened Walk
6. X Perform a backing "L" shape pivoting on the left wheel
7. XD Working Trot perform figure eight to the right then left
8. D Halt (10 seconds), salute
9. DA Walk on a loose rein to exit

