

## In This Issue:

Jump to section by clicking link

- ❖ [Page 1 - 4-H Club News](#)
- ❖ [Page 2 - Project News.](#)
- ❖ [Page 3 - Project News continued & Livestock Judging News](#)
- ❖ [Page 4 - Equine News](#)
- ❖ [Page 5 - Teen Opportunities & 4-H Leader Volunteer News & Record Book Information](#)
- ❖ [Page 6 - Explore 4-H, Resource Links](#)
- ❖ [Page 7 - 4-H Calendar of Events](#)
- ❖ [Page 8 - 4-H Calendar of Events, cont](#)
- ❖ [Page 9 - Wilco Brochure](#)



Yakima County 4-H Leaders' Council Meeting scheduled, May 15 at WSU Extension Conference Room, 6:30 pm.

## 4-H Club News

### Annual Financial Summaries Due

The Annual Financial Summary Report, Property Inventory Form and Audit Procedure Forms for October 1, 2020 to September 30, 2021 were due in the Extension office in **December**. If your club does not have a checking or savings account, please make a note to that fact on the Annual Financial Summary Report, sign the form and return it. If you haven't turned your club Financial Summary in, please do so as soon as possible.

[yakima.4h@wsu.edu](mailto:yakima.4h@wsu.edu) or fax 509-574-1601.



### Annual Club Plans Due

The Annual Club Plan form is due **February 1, 2023**, but you can turn it in at any time. February 28 it will be considered late. If you have any questions, please contact Bonnie or Jenny at the Extension office 574-1600.

### Report from Naches Valley 4-H:

On December 12th Naches Valley held their monthly meeting, where we made over 75 holiday craft projects and 150 Christmas Cards. We then delivered them to the residents at Good Samaritan Living Care in Yakima. We sadly had to cancel our plans for Christmas caroling there, but we were still happy to bring some holiday cheers to their rooms. After we finished making crafts we had a white elephant ornament exchange that was a lot of fun for all! The Naches Valley 4-H club held our monthly meeting on January 9th. We held the election of officers. Our new officers are: President- Lillian Miles, Vice President- Lucy Mullinnex, Secretary- Kenadie Snyder, Treasurer- Matthew Armstrong, Sargent of Arms- Paisley and Serena, Historians- London Snyder and Mackee Partlow, Reporter-Macie Partlow, and Refreshment Chairman- Elisha Advincula. The officers will have a busy year. We have 48 active and enrolled members in our club. There is a wide variety of projects and interests this year. At our meeting we kicked off our first community service project, a pet food and supply drive for Meals on Wheels. We want to help support the companion animals of the senior citizens in our valley. We will be collecting and bringing food and supplies to our next club meeting on February 13th. On January 27th our club had 30 members attend our record book night. At this event members received help setting up their record books and making their project plans and goals for the 4-H year. After a few hours of work, we all went to the roller-skating rink and had a great time. Fun was had by all. Submitted by Macie Partlow.

If you have club news, we want to feature it here! Please send to Bonnie [Yakima.4h@wsu.edu](mailto:Yakima.4h@wsu.edu), or drop them off at the office. Please put "Club News" in the subject line.

## 4-H Club News, continued

### Sagebrush Riders 4-H Club News

On December 2<sup>nd</sup> members from our club participated in the Selah Lighted Parade. We had 5 members who rode their brightly lit horses and numerous others who rode on the lighted trailer. The Grinch joined us as well. It was a fun but cold evening. We had our annual holiday party and awards on December 16<sup>th</sup>. We had an exciting white elephant gift exchange, a yummy dinner with dessert and our awards presentation. Our club member voted award recipients are

Perfect Attendance: Madison Morgan & Jake Beaudry

Most Improved Cloverbud: Anna Eismann

Most Improved Junior: Abby Jevne & Annelise Sheehan

Most Improved Intermediate: Avery Stokes

Most Improved Senior: Shelby Gossett

Community Service: Madison Morgan

Most Inspirational: Kassidy Brownlee & Delilah Haller

Thank you, Addison Blanchard, Club Reporter



## 4-H Project News

### JOANN Fabric supports 4-H

Join JOANN in supporting 4-H as it helps kids learn important skills to change their lives and communities for the better. More information visit website or scan QR code. <https://www.joann.com/4-h/>. Current 4-H members, volunteers and 4-H staff can save 15% off total in store and online purchases every day with 4-H Rewards. Joann guarantees a minimum donation to National 4-H Council of \$250,000 per year **until June 2023** through a combination of customer donations during campaigns, minimum of 2.5% of sales from the JOANN 4-H Rewards Card and \$0.50 for every yard purchased of custom 4-H fabric.



### Statewide 4-H Virtual Photography Club

Our first Statewide 4-H Virtual Photography Club meeting was held on **January 15th**. We recorded that meeting because the educational portion from the first

meeting is the shooting challenge assignment for the next meeting. Please find the recording at:

<http://bit.ly/3j126SK>. Our second meeting will be on **February 12th at 2:00 PM**. The pre-registration link for that meeting is <http://bit.ly/3Dup9MS>. If you would like to submit any photos for our critique at the second meeting, please email them to Pam Watson at [pwatson@wsu.edu](mailto:pwatson@wsu.edu) as attachments by **Friday, February 10th**. Make sure you put "4-H Photo Club." in the subject line of the e-mail. Each person may send up to three photos, but we may not get through them all. For now, keep working on the challenge assignment!



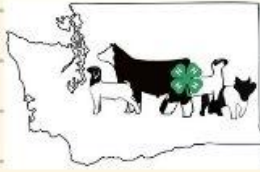
### Youth Discounts at Wilco

The Wilco store is offering youth discounts. With your approved account, you'll be added to their Youth Program (They will notify you when your account is active). Use your Youth Account to receive discounts all year on Youth Project related items such as feed, animal health supplies, show supplies, and more in all of their stores. Upon the approval of your account, you will receive (by mail) a Buy 1, Get 1 free Purina feed coupon for your project animal (Cattle, Lamb, Hog, Poultry, Rabbit or Equine). Limit 1 free bag per coupon. Must be same feed and size. **REWARDS!** Receive up to 10% back in the fall after show season! A Wilco store rebate card will be mailed to participants based on purchases. Sign up online at [wilco.coop/youth](http://wilco.coop/youth). Questions call: 800-382-5339. See Brochure attached.



## Livestock Judging Contest Meeting and Practice

Learn Basic Livestock Judging Skills



More information, Jennie Ripley 509-910-4802

Learn How to give Oral Reasons with confidence

Be a team member and compete at 4-H County, State and National levels

Tuesday, February 21, 6:00 pm  
WSU Conference Room

### Livestock Judging Contest Informational and Practice Meeting.

Are you interested in doing better with Livestock judging at fairs and shows? You need to attend the Livestock Judging Contest informational and practice meetings. You will learn the basics livestock judging skills. How to give Oral reasons with confidence. Every year a State 4-H team is selected and sent to National for the Livestock Judging Contest. First meeting will be **Tuesday, February 21, at 6:00 pm** at the WSU Conference Room. More information contact Jennie Ripley, 509-910-4802.

### Save the Date! – 2023 4-H Livestock Judging Contest

Make plans to attend the 2023 Washington 4-H State Livestock Judging Contest, scheduled for **Saturday, June 24th from 8:00 am to 5:00 pm** at the Ardell Pavilion on the Grant County Fairgrounds in Moses Lake, Washington.

## ROYAL RABBITS ROUNDUP



ROYAL RABBITS 4-H CLUB INVITES YOU TO OUR RABBIT SHOW  
**MARCH 12, 2023**  
5610 NE 199th St., Vancouver, WA 98686  
REGISTRATION DUE MARCH 10

Rabbit Costume Contest  
Yummy Concessions  
Silent Auction  
Raffle  
Bunny Photo Booth

SIGN UP HERE



### Royal Rabbits Roundup

The Royal Rabbits 4-H Club in Clark County, Washington is hosting their annual rabbit show on **March 12** and invite all bunny clubs in the state to participate! The focus of our show is FUN, growth, and community. The direct link to register click [HERE!](#) Scan the QR code

Don't miss out on all the fun, mark your calendars now !



and



## YOUTH LIVESTOCK FIELD DAYS



March 11, 2023  
8:30 AM - 3:00 PM PST  
Asotin Co. Fairgrounds



March 25, 2023  
8:30 AM - 3:00 PM PST  
UI Livestock Pavilion

Registration and details available  
**January 10, 2023!**

For questions, please contact:  
UI Benewah County Extension: 208-245-2422  
UI Nez Perce County Extension: 208-799-3096  
WSU Asotin County Extension: 509-243-2009  
WSU Whitman County Extension: 509-397-6290

Brought to you by:



The University of Idaho and Washington State University do not discriminate in education or employment on the basis of human differences, as required by state and federal laws. Anyone attending this program that requires auxiliary aids or services should contact UI Extension, Nez Perce County at 1239 Idaho Street, Lewiston, ID 83501 | 208-799-3096 | nezperce@uidaho.edu at least two weeks prior to the event.



### 4-H Fashion Revue

"Spring Fling" is this years theme. Clothing members are working hard on their projects in preparation for the Annual Fashion Revue - The big event in the 4-H Clothing Project! Fashion Revue will be **May 12th** at the Fruitvale Grange. Fashion Revue packets will be sent to the Clothing Project Leaders. If you are interested in Fashion and not a sewer then the Creative Consumer division is for you! Outfit must fit an occasion as Prom, Sports, Beach, Work or play designs, etc. Forms and more information is available on the Yakima County 4-H website, <https://extension.wsu.edu/yakima/4-h/4-h-forms/fashion-revue-forms/>.

## Equine Study Sessions

The study sessions referenced below are offered through the New York State 4-H Horse Program at Cornell University. They are a great source of information for those leaders or members who are interested in Horse Bowl, Horse Judging, Hippology and/or Communications (Equine Presentations).

**Below is the Direct Registration Link:**

[https://reg.cce.cornell.edu/equinestudysessions\\_215](https://reg.cce.cornell.edu/equinestudysessions_215)

### Session Schedule:

February 8th at 7pm: Horse Judging oral reasons  
February 15th at 7pm: Horse Judging Conformation  
February 22nd at 7pm: Horse Judging Performance

## Washington State Junior Horse Show

The Washington State Junior Horse Show will be held **June 22-25, 2023**. The WSJHS Clinic will be held on **June 22** at the Grant County Fairgrounds, Moses Lake. The WSJHS 4-H Horse Show is **June 23, 24, & 25**. There is also an Open WSJHS Show on **June 24 & 25**.



WSU EXTENSION | WA STATE 4-H

## EQUINE SCIENCE & HORSEMANSHIP SERIES

FUN VIRTUAL  
EQUINE LEARNING  
FOR EVERYONE!

**4th THURSDAYS\***  
**DEC 2022 - DEC 2023**  
**6:30-7:30 PM**  
\*NOV 30, 2023 (5TH THURSDAY  
DUE TO THANKSGIVING)

**REGISTER HERE:**  
[HTTPS://BIT.LY/WA4-HEQUINESCIENCE](https://bit.ly/wa4-hequinescience)

4-H  
WASHINGTON STATE UNIVERSITY  
EXTENSION



## Yakima County Horse Council Meeting

Plan on attending the Yakima County Horse Council meeting **February 15th, 6:00 pm, Majic's Pizza, Selah**. You can reserve a table at 5:30 pm.

- ★ If you would like to sign up for WSH Zone 1 membership and/or Year End Awards and also if you have questions on getting your 4-Hers all signed up come to the meeting.
- ★ We need to build a volunteer list for the Trail Clinic and Equi-Fair in Yakima.
- ★ The WSJHS and Washington State Classic are moving to the Grant Co Fairgrounds in Moses Lake and we will need to build a volunteer list for this show, we can do half day time frames or anything else that works.

More information Kimberly Lansing, [ms.berly@yahoo.com](mailto:ms.berly@yahoo.com) or 509-539-0247.

Yakima County 4-H Horse Certificates are due annually and 90 days before the first show you are planning on attending. You can email the certificate to [yakima.4h@wsu.edu](mailto:yakima.4h@wsu.edu) or fax 509-574-1601 or drop off at the office to have the certificate signed by Extension 4-H staff. You can download from the 4-H WSU Extension 4-H Horse page. <https://s3.wp.wsu.edu/uploads/sites/2083/2013/11/5-Horse-Certificate.pdf>.



## Introducing Q and A Sessions for the Washington 4-H Horse Program!

Have questions about the Washington 4-H horse program? Plan to attend the monthly Q and A for leaders, parents, members, and staff on the third **Tuesday of each month** via Zoom from **6:30 to 7:30 pm**. Zooms will start in February and run at least through June. The first one will be **Thursday, February 16th**. No need to register...just come and join the zoom by **6:30 pm**. There will be no specific topics for this first zoom but will be around the theme/parameters of horses and youth development. It will be more than "what are the rules." However, there will be time set aside for input on future topics for the subsequent Zooms. **The Zoom meeting ID is 452-082-9765 with no passcode**. You must have a zoom account to participate. The meeting will be facilitated by Jennifer Leach, WSU 4-H Equine Specialist. If you need further clarification of the meeting, feel free to contact Jennifer [jleach@wsu.edu](mailto:jleach@wsu.edu).



## Teen Opportunities

### 4-H Scholarship Applications Open January 1

Past Record Books or Permanent Record Books will give you ideas on what club offices you held, community service performed, awards won, etc to help complete your scholarship applications. Washington State 4-H is pleased to offer a number of different scholarships. Currently enrolled Washington State 4-H members are eligible to apply. Applicants must have accumulated at least two years of 4-H affiliation. Previous Washington State 4-H scholarship recipients are not eligible to apply. Applicant **must** be a high school senior attending an accredited two or four-year college or university in the fall.

Washington State 4-H Scholarship Applications **MUST BE COMPLETE**, with submission of all five pieces included, in order to be considered. Each applicant will be considered for all Washington State 4-H Scholarships. The application must be submitted by **March 15 no later than 9:59 PM**. These scholarships may be used at any accredited two or four-year college or university.

- **Woody and Joan Bernard 4-H Scholarship** – \$1,000 scholarship you must plan to attend a four-year accredited educational institution or two-year vocational institution.
- **Lewis County 4-H Leaders Scholarships** – (Two @ \$1,000, One @ \$500) you must plan to attend a two or four-year college. Applicants can be from any county in Washington State.
- **O.M. Plummer Memorial Scholarship** – \$500 scholarship you must be attending a two or four-year college.
- **Thomas R. Quann Scholarship** – \$1,000 scholarship you must be a current 4-H member and plan to attend a two or four-year college.
- **Washington State 4-H Foundation Trustees Scholarship** – \$1,000 scholarship you must be a high school senior and attend a two or four-year college.
- **WSU CAHNRS 4-H Scholarship** – \$3,000 and \$1,500 scholarships available you must have been a 4-H Club member for at least two years, a leader among your peers, and plan to attend the College of Agricultural, Human, and Natural Resource Sciences at Washington State University your freshman year.
- **J. Orville/Helen Young Memorial Scholarship** – to be considered for this \$500 scholarship you must be a current 4-H member and plan to attend a two or four-year college.

**The Washington State 4-H Dairy Endowment** also offers two \$500 scholarships. The Washington State Dairy Endowment Scholarship requires a separate application from those above and is due **April 1st**. The Dairy Endowment offers scholarships to present or former 4-H Dairy Project members – one for a high school senior and one for a current college student. For information and to apply go to:

<http://extension.wsu.edu/4h/dairy-endowment-fund/>

## Record Book Information

### 4-H Record Books and Add-On sheets

Thank you to Yakima County 4-H Leaders' Council for donating some funds for 4-H members to receive the hard copies of the 4-H Record Book. If you want a hard copy, you can come in the office and pick them up. Record books and inserts are free to members until the Leaders' Council donation is depleted. You can download fillable record books and some forms from the 4-H Record Book Page, <https://extension.wsu.edu/yakima/4-h/4-h-forms/record-book-forms-and-score-sheets/>. The Record Book link will route you to the wsu pubs page for you to download the record book. Unfortunately they download into a pdf file not word format. The green 4-H Record book covers still need to be purchased for \$3.50 each and can be used each year. **WHY 4-H RECORD BOOKS?** Record books are important for so many reasons! Record keeping in 4-H teaches valuable life skills and is an important part of completing each project. They help members set goals, keep track of activities, record events, track project costs, and a whole lot more! They also teach members valuable, lifelong skills in record keeping, accounting, reporting, and written communication. The Permanent Record Book keeps track of all your 4-H years information you will need to know to compete for 4-H Scholarships.

## 4-H Leader Volunteer News



*Leader Luncheon*

November 4, 2023

*Terrace Heights Grange*

Leaders meeting 10 am  
Honorary leaders 11 am  
Luncheon noon



### GivePulse - New Volunteering Recording Hours Process

4-H Volunteers and Leaders will be receiving an email this coming week to claim their GivePulse account. Please click the link in the email and follow the instructions on how to claim your account. Once the account is claimed you can add your Volunteer hours. Thanks to Amy, Barbara and Katie for inputting Volunteer hours. Questions? Bonnie 509-574-1576.

## EXPLORE 4-H

### 4H at Home



#### What Makes a Good Friend?

What qualities are important in your friendships? Let's look at what it means to be a good friend and evaluate the health of current friendships. Learn positive friendships, support a healthy lifestyle.

Grades 3-8, Estimated time is 45 minutes. [VIEW ACTIVITY!](#)



#### Prairie Hatchers 4-H Show

Save the Date, **March 25, 2023**, for the Prairie Hatchers 4-H Club's 23rd Annual

Youth show, taking place at the Clark County Fairgrounds in Ridgefield, Washington. Things to look forward to include Showmanship, confirmation/type, BIG Raffle, and Show quality poultry/chick auction!

## 4-H RESOURCES & IMPORTANT LINKS

### Quick Links

- ☐ Yakima County 4-H From Home  
<https://extension.wsu.edu/yakima/4-h/4-hfromhome/>
- ☐ Yakima County 4-H website:  
<http://extension.wsu.edu/yakima/4-h/>
- ☐ Yakima County Facebook Page:  
<http://www.facebook.com/YakimaCounty4H>
- ☐ State 4-H Website:  
<http://extension.wsu.edu/4h/>
- ☐ Volunteer Reporting Hours  
Now Using GivePulse
- ☐ Volunteer Sterlings Background screening  
<https://app.sterlingvolunteers.com/en>
- ☐ 4-H Online Enrollment Link  
<https://v2.4honline.com/>
- ☐ 4-H Online Enrollment: Creating Family Profile  
Youtube <https://extension.wsu.edu/yakima>
- ☐ 4HOnline Enrollment Guide  
<https://s3.wp.wsu.edu/uploads/sites.pdf>



WSU EXTENSION  
**Yakima County**

***“WSU Yakima County Extension empowers our families, communities, and local partners through a network of educators and volunteers to provide research-based outreach and creative solutions to enhance agricultural productivity, environmental stewardship, and quality of life.”***

**Alison White-Regional Specialist**  
4-H Youth Development  
[alison.white@wsu.edu](mailto:alison.white@wsu.edu)

**Jennifer Loyd-Program Coordinator**  
4-H Youth Development  
[jennifer.loyd@co.yakima.wa.us](mailto:jennifer.loyd@co.yakima.wa.us)

**4-H Program Email**  
[Yakima.4h@wsu.edu](mailto:Yakima.4h@wsu.edu)

**SUCCESS IS NOT FINAL;  
FAILURE IS NOT FATAL:  
IT IS THE COURAGE TO CONTINUE  
THAT COUNTS.**

WINSTON S. CHURCHILL

## CALENDAR OF EVENTS

### February 2023

1	Club/Group Annual Plan form due	
	JOANN Fabric Rewards - ends June 2023	<a href="https://www.ioann.com/4-h/">https://www.ioann.com/4-h/</a>
8	7:00 pm, Equine Science Study Session - Horse Judging Oral Reasons	<a href="https://reg.cce.cornell.edu/equinestudysessions_215">https://reg.cce.cornell.edu/equinestudysessions_215</a>
12	2:00 pm, Statewide 4-H Photo Club Meeting	Pam Watson, M.Ed., <a href="mailto:pwatson@wsu.edu">pwatson@wsu.edu</a> , <a href="http://bit.ly/3Dup9MS">http://bit.ly/3Dup9MS</a>
15	6:00 pm, County Horse Council Meeting, Majic's Pizza, start reserving tables 5:30 pm	Kim Lansing <a href="mailto:ms.berly@yahoo.com">ms.berly@yahoo.com</a> , 509-539-0247
15	7:00 pm, Equine Science Study Session - Horse Judging Conformation	<a href="https://reg.cce.cornell.edu/equinestudysessions_215">https://reg.cce.cornell.edu/equinestudysessions_215</a>
16	7:00 pm, Central Washington JR Livestock Show meeting, Show Fair office	<a href="https://www.centralwashingtonjuniorlivestockshow.com/">https://www.centralwashingtonjuniorlivestockshow.com/</a>
16	6:30 pm-7:30 pm, 3rd Tuesday each month, Q&A Sessions Washington 4-H Horse Program, ZOOM ID 452-082-9765 no passcode	Jennifer Leach <a href="mailto:jleach@wsu.edu">jleach@wsu.edu</a>
21	6:00 pm, Yakima Co. Livestock Judging Contest Meeting and Practice, WSU Conference Room	<a href="mailto:Jenie.Ripley@wsu.edu">Jenie Ripley 509-910-4802</a>
22	7:00 pm, Equine Science Study Session - Horse Judging Performance	<a href="https://reg.cce.cornell.edu/equinestudysessions_215">https://reg.cce.cornell.edu/equinestudysessions_215</a>
23	Club, Member, Volunteer news due to publish in next month 4-H Focus Newsletter	<a href="mailto:yakima.4h@wsu.edu">yakima.4h@wsu.edu</a>
28	Central Washington JR Livestock Show Preliminary Entry Deadline	<a href="https://www.centralwashingtonjuniorlivestockshow.com/">https://www.centralwashingtonjuniorlivestockshow.com/</a>

### March 2023

1	4-H Horse Certificates due in Extension office for WSJHS June 22-25	Bonnie or Jenny <a href="mailto:yakima.4h@wsu.edu">yakima.4h@wsu.edu</a> 509-574-1600
1	Input your GivePulse Volunteer Hours for the Month of Feb	<a href="mailto:Bonnie%20or%20Jenny@wsu.edu">Bonnie or Jenny yakima.4h@wsu.edu</a> 509-574-1600
11	8:30 am - 3:00 pm, Youth Livestock Field Days, Asotin Co. Fairgrounds	<a href="mailto:AsotinCountyExtension@wsu.edu">Asotin County Extension 509-243-2009</a>
15	Washington State Scholarship Applications must be submitted by 9:59 PM	<a href="https://extension.wsu.edu/4h/youth/scholarship-opportunities/">https://extension.wsu.edu/4h/youth/scholarship-opportunities/</a>
16	7:00 pm, Central Washington JR Livestock Show - Mandatory Meeting, Show office	<a href="https://www.centralwashingtonjuniorlivestockshow.com/">https://www.centralwashingtonjuniorlivestockshow.com/</a>
21	6:30 pm-7:30 pm, 3rd Tuesday each month, Q&A Sessions Washington 4-H Horse Program, ZOOM ID 452-082-9765 no passcode	<a href="mailto:Jennifer.Leach@wsu.edu">Jennifer Leach jleach@wsu.edu</a>
25	Prairie Hatchers 4-H Show, Clark County Fairgrounds, Ridgefield	
25	8:30 am - 3:00 pm, Youth Livestock Field Days, UI Livestock Pavilion	UI Extension 208-245-2422

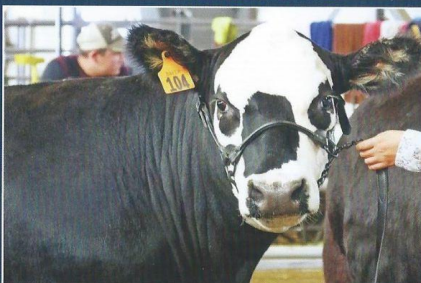
## CALENDAR OF EVENTS, continued

April 2023		
1	Input your GivePulse Volunteer Hours for the Month of March	Bonnie or Jenny <a href="mailto:yakima.4h@wsu.edu">yakima.4h@wsu.edu</a> 509-574-1600
15	Central Washington Junior Livestock Show FINAL ENTRY DEADLINE	<a href="https://www.centralwashingtonjuniorlivestockshow.com/">https://www.centralwashingtonjuniorlivestockshow.com/</a>
20	7:00 pm, Central Washington JR Livestock Show Meeting, Show office	<a href="https://www.centralwashingtonjuniorlivestockshow.com/">https://www.centralwashingtonjuniorlivestockshow.com/</a>
30	Central Washington JR Livestock Show, Haul in animals, turn in Record Books	<a href="https://www.centralwashingtonjuniorlivestockshow.com/">https://www.centralwashingtonjuniorlivestockshow.com/</a>
April 30-May 3	Central Washington Junior Livestock Show, Topenish Showgrounds	<a href="https://www.centralwashingtonjuniorlivestockshow.com/">https://www.centralwashingtonjuniorlivestockshow.com/</a>
May 2023		
April 30-May 3	Central Washington Junior Livestock Show, Topenish Showgrounds	<a href="https://www.centralwashingtonjuniorlivestockshow.com/">https://www.centralwashingtonjuniorlivestockshow.com/</a>
	JOANN Fabric Rewards - ends June 2023	<a href="https://www.ioann.com/4-h/">https://www.ioann.com/4-h/</a>
1	Input your GivePulse Volunteer Hours for the Month of April	Bonnie or Jenny <a href="mailto:yakima.4h@wsu.edu">yakima.4h@wsu.edu</a> 509-574-1600
4	Central Washington JR Livestock Show CLEAN-UP Day	<a href="https://www.centralwashingtonjuniorlivestockshow.com/">https://www.centralwashingtonjuniorlivestockshow.com/</a>
12	4-H Fashion Revue, Fruitland Grange, more information to come later	Jenny 574-1584, <a href="mailto:jennifer.loyd@co.yakima.wa.us">jennifer.loyd@co.yakima.wa.us</a>
15	6:30 PM, Yakima County 4-H Leaders' Council Meeting. WSU Extension Conference Room	Jenny 574-1584, <a href="mailto:jennifer.loyd@co.yakima.wa.us">jennifer.loyd@co.yakima.wa.us</a>
June 2023		
	JOANN Fabric Rewards - ends June 2023	<a href="https://www.ioann.com/4-h/">https://www.ioann.com/4-h/</a>
1	Input your GivePulse Volunteer Hours for the Month of May	Bonnie or Jenny <a href="mailto:yakima.4h@wsu.edu">yakima.4h@wsu.edu</a> 509-574-1600
22-25	WA State Junior Horse Show, Grant County Fairgrounds, Moses Lake	Kim Lansing <a href="mailto:ms.berly@yahoo.com">ms.berly@yahoo.com</a>
23-25	WA State Junior Horse Show, 4-H Horse Show, Grant County Fairgrounds, Moses Lake	Kim Lansing <a href="mailto:ms.berly@yahoo.com">ms.berly@yahoo.com</a>
24-25	WA State Junior Horse Show, Open Horse Show, Grant County Fairgrounds, Moses Lake	Kim Lansing <a href="mailto:ms.berly@yahoo.com">ms.berly@yahoo.com</a>
24	8:00 am - 5:00 pm, 4-H Livestock Judging Contest, Grant County Fairgrounds	Jenny 574-1584, <a href="mailto:jennifer.loyd@co.yakima.wa.us">jennifer.loyd@co.yakima.wa.us</a>
July 2023		
1	Input your GivePulse Volunteer Hours for the Month of June	Bonnie or Jenny <a href="mailto:yakima.4h@wsu.edu">yakima.4h@wsu.edu</a> 509-574-1600
1	National Congress Application due	National Congress, Criteria   Application.
	West Valley Fair	<a href="#">West Valley Fair   Wiley City WA</a>



Place  
Stamp  
Here

WILL GO REWARDS WHERE EVERYONE'S FAMILY



FARMSTORE.COM

FEED GREATNESS™

FFA • EQUESTRIAN • 4H

\* Awards based on total purchase value from prior 12 month period (September 30 – August 31).

<b>YOUR TOTAL PURCHASES</b>	<b>YOU'LL GET A REBATE OF</b>
\$50 to \$99	\$5 Card
\$100 to \$249	\$10 Card
\$250 to \$499	\$25 Card
\$500 to \$999	\$50 Card
\$1000 or more	\$100 Card



\* Youth accounts are for 4H, FFA and Youth Equestrian projects. Account abuse will forfeit youth account benefits.