

February  
2022

# 4-H FOCUS



WASHINGTON STATE UNIVERSITY

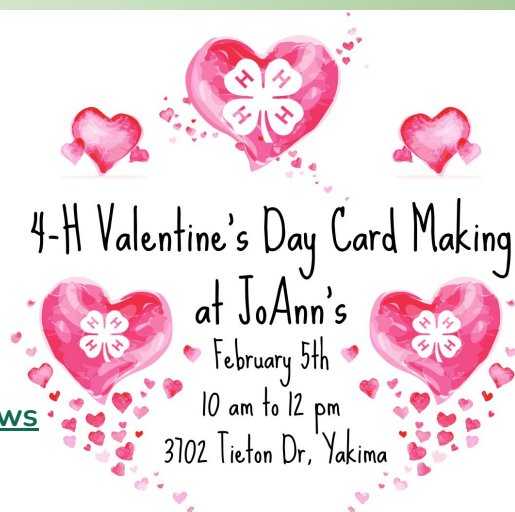


YAKIMA COUNTY EXTENSION

## In This Issue:

Jump to section by clicking link

- ❖ [Page 1-Upcoming Events & Program News](#)
- ❖ [Page 2-Livestock](#)
- ❖ [Page 3-4-H Spotlight & Teen Opportunities](#)
- ❖ [Page 4-Equine News, Explore 4-H, Field Day & Shows](#)
- ❖ [Page 5-Calendar of Events](#)
- ❖ [Page 6-Important Links & Resources](#)



Join us in making cards for a local nursing home! JoAnn's 4-H fundraising campaign starts Feb. 1st and ends April 30th.

## NEWS YOU CAN USE

**Save the Date!**  
**Fashion Revue & Talent Show**  
**is planned**  
**for May 2022!**  
**Stay tuned for more**  
**details to come!**

### January Report from Sagebrush Riders:

This month the Sagebrush Riders got together before the monthly meeting to work on our record books followed by a trip to the ice rink. SBR has always tried to be extremely active in our community. This month we honored that by collecting bedding for the Camp Hope Homeless Encampment as well as writing cards to our local senior center. We also hosted a christmas party for our members! We had a gift exchange and some pizza and desserts as well as handing out awards and our yearly pins congratulating our members on their years in 4-H. -Faith, SBR Reporter

If you have club news, we want to feature it here!! Email it to Sarah at [sarah.boerum@co.yakima.wa.us](mailto:sarah.boerum@co.yakima.wa.us)

## UPCOMING EVENTS

February 1	Annual Club Plan Due	<a href="https://extension.wsu.edu/yakima/4-h/4-h-forms/">extension.wsu.edu/yakima/4-h/4-h-forms/</a>
February 10	Giddy Up and Go Series: Horse 101 at 6:30 pm	<a href="https://extension.wsu.edu/yakima/4-h/4-h-events/4-h-horse-events/">extension.wsu.edu/yakima/4-h/4-h-events/4-h-horse-events/</a>
February 17	Central Washington Junior Livestock Show Meeting at Toppenish Office 7 pm	<a href="http://www.centralwashingtonjuniorlivestockshow.com/">www.centralwashingtonjuniorlivestockshow.com/</a>
March 3	Giddy Up and Go Series: Horse 102 at 6:30 pm	<a href="https://extension.wsu.edu/yakima/4-h/4-h-events/4-h-horse-events/">extension.wsu.edu/yakima/4-h/4-h-events/4-h-horse-events/</a>
March 5	Know Your Government Final Event	<a href="https://sites.google.com/view/kyg-2022">https://sites.google.com/view/kyg-2022</a>
March 12	Swine Field Day at Asotin County Fairgrounds from 8 am to 3 pm	Contact WSU Asotin County Extension, 509.243.2009
March 17	Central Washington Junior Livestock Show Meeting at Toppenish Office 7 pm	<a href="http://www.centralwashingtonjuniorlivestockshow.com/">www.centralwashingtonjuniorlivestockshow.com/</a>

# LIVESTOCK PROJECTS

Save the Date!  
Spring Youth Calf  
Sale In Monroe On  
March 19th!



The State Dairy Quiz Bowl  
contest will also be held on  
March 19, 2022 at the Evergreen  
State Fairgrounds, Monroe at  
9:00 am in the Dairy Barn

Mark your calendars for the 29th Annual Springtime Youth Calf Sale! The sale will be held on **March 19, 2022**, at 1:00 pm, in the Dairy Barn at the Evergreen State Fairgrounds in Monroe.

2022 Calf Grant Application: <https://s3.wp.wsu.edu/uploads/sites/2050/2022/01/SYCS-Calf-Grant-2022-1.pdf>

The due date for grant applications is **February 22, 2022**.

2022 Calf Scholarship Application:

<https://s3.wp.wsu.edu/uploads/sites/2050/2022/01/SYCS-Scholarship-App-2022-1.pdf>

The due date for scholarship applications is **March 1, 2022**

Questions? Please contact sale chairman, Liz Holtcamp at [syics4h@gmail.com](mailto:syics4h@gmail.com). For more information about the Springtime Youth Calf Sale please go to this link:

<https://extension.wsu.edu/4h/dairy-endowment-fund/programactivities/springtime-youth-calf-sale/>.

Also find us on Facebook at Springtime Youth Calf Sale

## PROJECT RECORD BOOK for Central Washington Junior Livestock Show

Please note regarding record books for the Central Washington Junior Livestock Show on **May 1-4**.

Please read your CWJLS Premium book regarding the new format for show project record books.

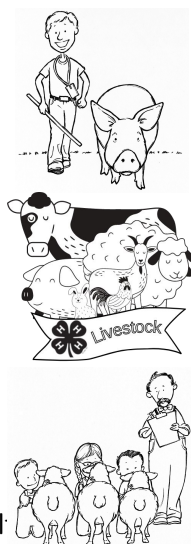
**3 RING BINDERS WILL NOT BE ACCEPTED—Pages must be in a folder with fasteners.**

More information, score sheets and downloadable record books, visit the Yakima County Record book website: <https://extension.wsu.edu/yakima/4-h/4-h-forms/record-book-forms-and-score-sheets/>

4-H: Level 2 book (C0934) **only accepted** along with Market Add Sheet (C0728E) in this order—



1. Cover: must be neat with full name, address, club name, years in 4H, 4H Division and County.
2. Planning Calendar: Include all events pertaining to your project and all County events such as poster contests, talent shows, fairs, etc. Check what events you attended.
3. Code of Ethics: Must be signed by member, parent, leader and dated.
4. Project Record/Plans: Needs three complete and realistic plans for your project and have member, leader and parent sign and date. Complete at beginning of 4H year.
5. Project Journal: Needs to show all project work and activities. Must be used from the beginning of the project to now. Show what was done, how it was done, what was learned, etc. Make comments.
6. Market Add Sheet (C0728E): Complete information with beginning inventory, dates you weighed your animal, all feed, etc. purchased. These items will be listed in your project journal. You won't be able to complete the Income portion until after the market animal is sold.
7. Pictures, and highlights: Make sure you caption the pictures and date them. Complete the Highlight page, what you learned, any problems and list your successes.
8. **Do not use page 14 in the book, the information will be available in the Market Record add sheet!! C0728E**
9. 4-H Story: Start with a nice introduction. Your story won't be complete until the end of the 4-H year. additional questions, call the 4-H staff at 509-574-1600.



## Junior Livestock Show of Spokane is May 3-7

Entry Deadline is **April 10, 2022** and all entries are online only.

Visit [www.juniorshow.org](http://www.juniorshow.org) to enter. Contact Lynn Cotter at [Jrshow75@gmail.com](mailto:Jrshow75@gmail.com) or 509-535-6737 if you cannot access the online entries. For more details, call Sarah at 509-574-1600.

**Central Washington Livestock Show Meeting**  
in the Toppenish Office **February 17th at 7 pm**. For  
more information, visit  
[www.centralwashingtonjuniorlivestockshow.com/](http://www.centralwashingtonjuniorlivestockshow.com/)

## 4-H SPOTLIGHT

### YOUTH AND ADULT VOLUNTEERS NEEDED!

Arborfest is **April 16th**! Jenny will have a 4-H booth and needs our amazing community to help out! This year's theme is "After the Fire", inspired by the Schneider Springs fire this summer. Jenny will be using an activity to teach about how forest fires affect nature and trees. Email Jenny at [jennifer.loyd@co.yakima.wa.us](mailto:jennifer.loyd@co.yakima.wa.us) to volunteer!

A big thank you to our **Turkey Tail Contest Winners! Maci, Dulce, Claire and Annelise** gave us all smiles with their colorful turkeys and thankful thoughts!



## TEEN OPPORTUNITIES

### Registration Now Open For Healthy Living And Agri-Science Summits



The National Youth Summit Series are immersive, three-day experiences where you dive into the issues, expand your career horizons and grow as a leader while working with and learning from other teens and experts with shared passions. Visit <https://4-h.org/parents/national-youth-summits/> for more information.

### Apply for the 2023 4-H Youth in Action Awards



It's that time of year again – time for all 4-H youth ages 15-19 to apply to be a 2023 4-H Youth in Action Award winner! Now is the chance for 4-H'ers across the nation to tell us how they're impacting their communities through service and leadership. Four selected recipients will each earn a \$5,000 scholarship and an opportunity to serve as a national youth spokesperson. Learn more at <https://4-h.org/parents/4-h-youth-in-action-awards/> and set your calendar to apply by **March 28, 2022**.



4-H  
Scholarship  
Applications  
Open  
January 1

The WSU 4-H Scholarship Applications will open on January 1, 2022. There are a variety of scholarship available! The deadline to apply is **March 15, 2022**. Like last year, the scholarships are available to all approved 12th grade 4-Hers who have accumulated at least 2 years of 4-H participation. An applicant must have an approved 4-H enrollment prior to the application deadline. **Please note that the supplemental documents required for the application (resume, essay, letters of recommendation, and academic transcripts) must be combined into a single PDF file before uploading to 4-H Online.** The scholarship requirements as well as instructions on how to apply can be found at <http://extension.wsu.edu/4h/youth/scholarship-opportunities/> Questions regarding the requirements or scholarships themselves, should be directed to Britta Nitcy at [nitcy@wsu.edu](mailto:nitcy@wsu.edu).



Distracted driving car crashes are one of the leading causes of death of our youth and we need your help to change that. Project Yellow Light is a national scholarship competition open to all high school juniors and seniors and all undergrad college students. Create a broadcast video, radio, social video or billboard PSA warning your peers of the dangers of distracted driving and win up to \$8,000! Winners not only have an opportunity to have their work shared nationwide, but also do something for the greater good. Visit <https://www.projectyellowlight.com/how-it-works?> to apply.



# EQUINE NEWS



A five part series all about horses! Based on the 4-H Horseless Horse curriculum, these classes are offered to all 4-H youth who want to learn more about these glorious creatures. The first class is Horse 101 on **February 10th at 6:30 pm**. The classes will be held in person at the WSU Extension conference room (2403 S 18th St in Union Gap).

Horse 102 will follow on **March 3rd at 6:30 pm** in the WSU Extension Conference room. The remaining classes will be on **March 29, April 21, and May 12**. Check [extension.wsu.edu/yakima/4-h/4-h-events/4-h-horse-events/](https://extension.wsu.edu/yakima/4-h/4-h-events/4-h-horse-events/) for updates. If you have questions, email Sarah at [sarah.boerum@co.yakima.wa.us](mailto:sarah.boerum@co.yakima.wa.us) or call 509-574-1600.



## 2022 Washington State Junior Horse Show

**4-H Show June 24-26 | Open Show June 25-26**  
**Sue Sultze Ranch Horse Clinic June 23**

Buckles and Premium Money will be awarded!



For updates, please visit  
<https://extension.wsu.edu/yakima/4-h/4-h-events/4-h-horse-events/>  
Want to be involved? Contact  
Kim at [ms.berly@yahoo.com](mailto:ms.berly@yahoo.com)

## FIELD DAY AND SHOWS!

### Snoqualmie Valley Evergreens 4-H Evergreen Rabbit Show on March 5th!



The Snohomish Valley Evergreen 4-H Club's Rabbit Show, will be held on **March 5, 2022** at the Evergreen State Fairgrounds, Monroe, Washington, at 9:00 am. Rabbit Health Check and Registration starts at 8:00 am. The full show catalog can be accessed for download by visiting <https://s3.wp.wsu.edu/uploads/sites/2050/2022/01/RABBIT-SHOW-CATALOG-2022-pdf.pdf>

### Mark your calendars for March 12 and March 26 for the 4-H and FFA Youth Livestock Field Days!

**March 12** is the Swine Field Day, 8:00am – 3:00pm, at Asotin County Fairgrounds. **March 26** is the Beef Field Day, 8:00am – 3:00pm, at UI Livestock Pavilion.

Topics for the field days include feeding and nutrition, selection and judging, healthcare, meat science activities, show preparations and transportation/ownership requirements.

**The registration fee is \$10 per person and required in advance.** Youth Livestock Field Days are hosted by UI and WSU Extension. **For more information contact WSU Asotin County Extension, 509.243.2009, UI Nez Perce County Extension, 208.799.3096 or UI Benewah County Extension, 208.245.2422.**

## EXPLORE 4-H!



### Appreciating the Power of Plants

In this set of hands-on activities brought to you by University of Georgia Extension, we'll explore how scientists study plants, grow them and change them to create new kinds of plants. <https://4-h.org/about/4-h-at-home/power-of-plants/>



### COW CARE 101

Now with 5 additional activities, this series from the University of Tennessee Extension brings kids an up-close look at how cows work (they grow fungi in their stomachs?!), and what it takes for farmers to take care of them. By the end of each activity, kids will have newfound knowledge as well as a fun craft to take their bovine knowledge to the next level. Visit <https://4-h.org/about/4-h-at-home/beef-cattle-nutrition/> to get started!

# CALENDAR OF EVENTS

<b>Feb 1</b>	Annual Club Plan Due	<a href="https://extension.wsu.edu/yakima/4-h/4-h-forms/">extension.wsu.edu/yakima/4-h/4-h-forms/</a>
<b>Feb 10</b>	Giddy Up and Go Series: Horse 101 at 6:30 pm	<a href="https://extension.wsu.edu/yakima/4-h/4-h-events/4-h-horse-events/">extension.wsu.edu/yakima/4-h/4-h-events/4-h-horse-events/</a>
<b>Feb 17</b>	Central Washington Junior Livestock Show Meeting at Toppenish Office 7 pm	<a href="http://www.centralwashingtonjuniorlivestockshow.com/">www.centralwashingtonjuniorlivestockshow.com/</a>
<b>March 3</b>	Giddy Up and Go Series: Horse 102 at 6:30 pm	<a href="https://extension.wsu.edu/yakima/4-h/4-h-events/4-h-horse-events/">extension.wsu.edu/yakima/4-h/4-h-events/4-h-horse-events/</a>
<b>March 5</b>	Know Your Government Final Event	<a href="https://sites.google.com/view/kyg-2022">https://sites.google.com/view/kyg-2022</a>
<b>March 12</b>	Swine Field Day at Asotin County Fairgrounds from 8 am to 3 pm	Contact WSU Asotin County Extension, 509.243.2009
<b>March 17</b>	Central Washington Junior Livestock Show Meeting at Toppenish Office 7 pm	<a href="http://www.centralwashingtonjuniorlivestockshow.com/">www.centralwashingtonjuniorlivestockshow.com/</a>
<b>March 19</b>	Equifair CANCELLED	<a href="https://extension.wsu.edu/yakima/4-h/4-h-events/4-h-horse-events/">extension.wsu.edu/yakima/4-h/4-h-events/4-h-horse-events/</a>
<b>March 19</b>	Springtime Youth Calf Sale	<a href="https://extension.wsu.edu/4h/dairy-endowment-fund/programactivities/springtime-youth-calf-sale/">extension.wsu.edu/4h/dairy-endowment-fund/programactivities/springtime-youth-calf-sale/</a>
<b>March 26</b>	Beef Field Day at UI Livestock Pavilion	Contact WSU Asotin County Extension, 509.243.2009
<b>March 29</b>	Giddyup and Go Series	<a href="https://extension.wsu.edu/yakima/4-h/4-h-events/4-h-horse-events/">extension.wsu.edu/yakima/4-h/4-h-events/4-h-horse-events/</a>
<b>April 16</b>	Arborfest- Youth and Adult Volunteers Needed!	Email Jenny at <a href="mailto:jennifer.loyd@co.yakima.wa.us">jennifer.loyd@co.yakima.wa.us</a>
<b>April 21</b>	Giddy Up and Go Series	<a href="https://extension.wsu.edu/yakima/4-h/4-h-events/4-h-horse-events/">extension.wsu.edu/yakima/4-h/4-h-events/4-h-horse-events/</a>
<b>April 21</b>	Central Washington Junior Livestock Show Meeting at Toppenish Office 7 pm	<a href="http://www.centralwashingtonjuniorlivestockshow.com/">www.centralwashingtonjuniorlivestockshow.com/</a>
<b>April 23</b>	Central Washington Junior Livestock Show Cleanup Day starting at 9 am	<a href="https://extension.wsu.edu/yakima/4-h/4-h-events/4-h-horse-events/">extension.wsu.edu/yakima/4-h/4-h-events/4-h-horse-events/</a>
<b>April 30</b>	Equifair	<a href="https://extension.wsu.edu/yakima/4-h/4-h-events/4-h-horse-events/">extension.wsu.edu/yakima/4-h/4-h-events/4-h-horse-events/</a>
<b>May 1-4</b>	Central Washington Junior Livestock Show	<a href="http://www.centralwashingtonjuniorlivestockshow.com/">www.centralwashingtonjuniorlivestockshow.com/</a>
<b>May 7</b>	Central Washington Junior Livestock Show Cleanup Day	<a href="http://www.centralwashingtonjuniorlivestockshow.com/">www.centralwashingtonjuniorlivestockshow.com/</a>
<b>May 12</b>	Giddy Up and Go Series	<a href="https://extension.wsu.edu/yakima/4-h/4-h-events/4-h-horse-events/">extension.wsu.edu/yakima/4-h/4-h-events/4-h-horse-events/</a>
<b>May 16</b>	Yakima County Leader's Council Meeting at 6:30 (zoom and in person)	<a href="mailto:sarah.boerum@co.yakima.wa.us">email Sarah at sarah.boerum@co.yakima.wa.us</a>
<b>May 19</b>	Central Washington Junior Livestock Post Show Meeting at Toppensih Office 7 pm	<a href="http://www.centralwashingtonjuniorlivestockshow.com/">www.centralwashingtonjuniorlivestockshow.com/</a>
<b>June 23</b>	Sue Sultze Ranch Horse Clinic	<a href="https://extension.wsu.edu/yakima/4-h/4-h-events/4-h-horse-events/">extension.wsu.edu/yakima/4-h/4-h-events/4-h-horse-events/</a>
<b>June 24-26</b>	Washington State Junior Horse Show	<a href="https://extension.wsu.edu/yakima/4-h/4-h-events/4-h-horse-events/">extension.wsu.edu/yakima/4-h/4-h-events/4-h-horse-events/</a>

## Nominations Open for Young Alumni Advisory Committee

National 4-H Council needs your help to identify & nominate dynamic, proven leaders to serve on the Young Alumni Advisory Committee (YAAC). Applicants must be nominated by a 4-H professional or volunteer by **February 28**, and completed applications are due on **March 28**. Nominees should be between the ages of 18-22 as of July 1.

<https://4-h.org/alumni/yaac-nominator-form/>

# HAVE A NEED/FILL A NEED

## Volunteers: YOUR TIME MATTERS TO US.

Every hour you spend supporting 4-H is a donation. All Certified 4-H Volunteers are required to report hours; reporting protects and supports you and the local program!



By reporting your hours you give Yakima County 4-H the numeric proof we need to show our funders and higher-officials that our programs are greatly valued and needed. In addition, reporting your hours makes you eligible for the Dept. of Labor and Industries medical aid program (this program allows an injured volunteer's medical expense to be paid by the Department of Labor and Industries), and allows you protection under the state of Washington tort claims law, RCW 4.92.060, for acts or omissions while performing, or in good faith purporting to perform, your official volunteer duties.

**What qualifies as volunteer hours?** Anything and everything you do for 4-H! Teaching, planning, prepping, shopping, helping at fair and other events, paperwork, training, driving, calling, mentoring, presenting, emailing, even reading this! If it's for 4-H, it counts!

Email Sarah at [sarah.boerum@co.yakima.wa.us](mailto:sarah.boerum@co.yakima.wa.us) or call at (509) 574-1574 if you need assistance.

**COVID UPDATE:** Find Yakima County 4-H Guidelines link:  
<https://extension.wsu.edu/yakima/2020/03/yakima-county-4-h-covid-19-response/>

## Quick Links

- ☐ Volunteer Sterlings Background screening  
<https://app.sterlingvolunteers.com/en>
- ☐ 4-H Online Enrollment Link  
<https://v2.4honline.com/>
- ☐ 4-H Online Enrollment: Creating Family Profile Youtube  
<https://extension.wsu.edu/yakima>
- ☐ 4HOnline Enrollment Guide  
<https://s3.wp.wsu.edu/uploads/sites.pdf>
- ☐ Yakima County 4-H From Home  
<https://extension.wsu.edu/yakima/4-h/4-hfromhome/>
- ☐ Yakima County 4-H website:  
<http://extension.wsu.edu/yakima/4-h/>
- ☐ Yakima County Facebook Page:  
<http://www.facebook.com/YakimaCounty4H>
- ☐ State 4-H Website:  
<http://extension.wsu.edu/4h/>
- ☐ WSU Extension Publications,  
<https://pubs.extension.wsu.edu/>
- ☐ Volunteer Reporting Hours  
<https://volunteers.cahnrs.wsu.edu/logon.aspx>

## Freebies: Assorted Horse Supplies

Call and make an appointment to pick up or view at the Yakima County WSU extension office: (509) 574-1574



## WASHINGTON STATE RESOURCE GUIDE FOR PARENTS AND CAREGIVERS: Caring for Your Family During COVID-19

The *WASHINGTON STATE RESOURCE GUIDE FOR PARENTS AND CAREGIVERS: Caring for Your Family During COVID-19* was developed to help parents and their families navigate the pandemic and the days to follow. The publication is available at [https://www.dcyf.wa.gov/sites/default/files/pubs/FS\\_0039.pdf](https://www.dcyf.wa.gov/sites/default/files/pubs/FS_0039.pdf).



## Yakima County

WASHINGTON STATE UNIVERSITY  
EXTENSION

***“WSU Yakima County Extension empowers our families, communities, and local partners through a network of educators and volunteers to provide research-based outreach and creative solutions to enhance agricultural productivity, environmental stewardship, and quality of life.”***

**Alison White**  
Regional Specialist, 4-H Youth Development

**Jennifer Loyd**  
Program Coordinator, 4-H Youth Development

**Sarah Boerum**  
Program Specialist, 4-H Youth Development