



HEAD



HEART



HANDS



HEALTH

**In This Issue...**

- PACSI Streaming videos
- 4-H From Home Page
- Reminder COVID-19 Face-to-Face Meetings
- Reminder Regarding Adult & Youth Interactions During COVID-19
- Virtual Input Survey \*\* IMPORTANT INPUT NEEDED!\*\*
- Virtual Concert Benefit 4-H
- Public Presentations
- Share Your 4-H Club Events or Happenings With Us
- AQHA Young Horse Development Program
- Washington State Junior Horse Show Virtual Show Aug 10-Sept 30
- Samantha Sealock Scholarship Winner!
- 4-H Virtual Showcase Judges Training Sessions Recordings are Now Available!
- 4-H Council Shares Survey on COVID-19 Youth Mental Health & Loneliness
- State 4-H Equine Meeting, Aug 27
- Butterflies at Farmers Market with Master Gardeners, Aug 30
- Tractor Supply Co Fall Paper Clover Campaign, Oct 7-18
- Share Your STEM Project or Activity on 4-H STEM Instagram page
- COVID-19 Resources Available from WSU
- Additional Equine Resources Added to Horse Project Page
- Explore conditions for Learning at Home Resources

**Quick Links**

- *PACSI Streaming Videos*  
<https://www.pacificsciencecenter.org/events-programs/curiosity-at-home>
- *#FarmOn Virtual Benefit Concert*  
<https://www.farmjournalfielddays.com/register/>
- *Washington State Junior Horse Virtual Horse Show*  
<http://washingtonstatejrhorseshow.fairentry.com/>
- *Mask Making Challenge, Mask Kit Flyer*  
[https://s3.wp.wsu.edu/uploads/sites/2050/2020/06/LGO\\_Mask-Kits-Flyer.pdf](https://s3.wp.wsu.edu/uploads/sites/2050/2020/06/LGO_Mask-Kits-Flyer.pdf)
- *Mask Making Challenge Instructions*  
[https://s3.wp.wsu.edu/uploads/sites/2050/2020/06/How-to-Make-a-Mask\\_LGO\\_FINAL.pdf](https://s3.wp.wsu.edu/uploads/sites/2050/2020/06/How-to-Make-a-Mask_LGO_FINAL.pdf)

- *WA State Virtual Fair*  
<https://extension.wsu.edu/4h/fairs/state-4-h-fair/>
- *Virtual Judging Horse Registration link*  
[https://s3.wp.wsu.edu/uploads/sites/2050/2020/08/Registration-Form.Final\\_8.18.20.pdf](https://s3.wp.wsu.edu/uploads/sites/2050/2020/08/Registration-Form.Final_8.18.20.pdf)
- *State 4-H Fair Announcement*  
<https://news.thefair.com/public/viewmessage/html/41324/1ejxdnkrvgamauazdc727q04x8tq0/83756447204c2faf424331222bd9831b>
- *Yakima County 4-H From Home*  
<https://extension.wsu.edu/yakima/4-h/4-hfromhome/>
- *Yakima County 4-H website:*  
<http://extension.wsu.edu/yakima/4-h/>
- *Yakima County Facebook Page:*  
<http://www.facebook.com/YakimaCounty4H>
- *State 4-H Website:* <http://extension.wsu.edu/4h/>
- *WSU Extension Publications,*  
<https://pubs.extension.wsu.edu/>
- *Equine Resources Horse Project page*  
<https://extension.wsu.edu/4h/projects/stem/horse/horse-project-resources/>
- *Volunteer Reporting Hours*  
<https://volunteers.cahnrs.wsu.edu/logon.aspx>
- *How You Can Help Your Child Actively Engage in Learning from Home*  
<https://www.air.org/resource/building-positive-conditions-learning-home-strategies-and-resources-families-and-caregivers>
- *Pacific Science Center's Curiosity at Home*  
[https://www.pacificsciencecenter.org/events-programs/curiosity-at-home/?utm\\_source=august-educator-enews\\_082020&utm\\_medium=email&utm\\_campaign=august-educator-enews\\_082020&utm\\_content=text](https://www.pacificsciencecenter.org/events-programs/curiosity-at-home/?utm_source=august-educator-enews_082020&utm_medium=email&utm_campaign=august-educator-enews_082020&utm_content=text)

**PACSCI STREAMING VIDEOS**

Curiosity never closes, which is why PacSci is bringing your favorite science experiences to you. Watch new butterflies emerge, check in on the mole rat colony, try your hand at an at-home Tinker Tank activity, or watch a Live Science Show. Scroll down to video section, select the video you wish to view..  
<https://www.pacificsciencecenter.org/events-programs/curiosity-at-home/>

**4-H from Home:** Please check out the "4-H from Home" page on our website for resources to support club activities, independent project learning, families learning activities, and more!

**REMINDER:** Due to COVID-19 and keeping our 4-H community safe, 4-H will not be meeting face-to-face until Yakima County reaches Phase 4 of the Governor's phased plans. At that point, there will be protocols to follow, we will be sharing those protocols as we move through the phases. The 4-H Office is creating fun learning kits, contact Jenny if you would like to pick up a hands-on learning kit for your kids, Thanks so much... and be safe.

### IMPORTANT REMINDER REGARDING WSU EXTENSION ADULT / YOUTH INTERACTIONS DURING COVID-19

As we are all in communication via technology with youth at this time, I would like to take this opportunity to remind everyone of WSU Extension's policy on interactions. Under this policy, AT NO TIME should one adult be meeting or communicating with youth WITHOUT the presence of another adult. This policy pertains to Zoom conferences, telephone conversations, text messages, social media posts, etc. To facilitate communication, make certain to cc another adult on written communications, and invite another adult to be present during virtual meetings. The second adult is recommended to be a WSU volunteer; other adults can serve in this role if you're in a pinch. - Jana S. Ferris, Associate Professor, Volunteer Specialist, WSU Extension, (425) 595-2950

### VIRTUAL INPUT SURVEY

Thanks to those who responded to our recent survey about virtual 4-H events. Although we did not have a lot of feedback, we wanted you to know 4-H will continue to support the Virtual Washington State Junior Horse Show & Showcase & also the Virtual 4-H State Fair. This fall 4-H also looks forward to various opportunities to showcase 4-H in local businesses and with other engaging opportunities, even when we are not able to meet face-to-face. If you have ideas, questions, or concerns, please contact Jenny. We are excited to work together with all of you to continue to make 4-H relevant and vibrant during these challenging times. Contact Jenny to find out what learning kits are available for kids & also with your creative ideas for future learning kits.

### VIRTUAL CONCERT BENEFITING 4-H

We are only two days away from the #FarmON Virtual Benefit Concert! Featuring top country music stars, the Farm Journal concert will benefit 4-H's FOURWARD Fund to help provide #Opportunity4All kids. Tune-in on August 27 at 7:00 PM CDT / 8:00 PM EDT on the 4-H Facebook page and share with your networks! Click [LEARN MORE](#)

## COUNTY & COMMUNITY

### PUBLIC PRESENTATIONS

Yakima County Public Presentations will be completed virtually this year. Please contact Jenny or Bonnie to schedule a zoom time for your presentation. You can also create a video and email it to [Yakima.4h@wsu.edu](mailto:Yakima.4h@wsu.edu). If you use YouTube to video, please create YouTube as "unlisted" & send us the link. Looking forward to seeing your virtual public presentations and demonstrations. If you are unable to zoom or YouTube, please contact us to make other arrangements. Presentations could also be done over the phone and send us a photo of your poster. We will make accommodations so anyone wishing to participate is able to complete their Public Presentation! Yakima County 4-H Leaders' Council is paying 4-H members' enrollment fees for the 2020-2021 4-H year for those members who sign up by **September 30** and present their public presentation by **October 15, 2020**.

## CLUB NEWS

### SHARE YOUR EVENTS WITH US

We would love to see what everyone is doing! If you would like to send us some pictures and a small write up for us to share to the Facebook page that would be great! It is always fun to see what everyone is doing these days. Just sent an email to Jenny [Jennifer.Loyd@co.yakima.wa.us](mailto:Jennifer.Loyd@co.yakima.wa.us) to get it on Facebook!

## PROJECT NEWS

### AQHA YOUNG HORSE DEVELOPMENT PROGRAM APPLICATION IS NOW AVAILABLE

The American Quarter Horse Association's Ranching Heritage Young

Horse Development Program (YHD) showcases the stock being bred and raised by AQHA Ranching Heritage members by matching donated weanlings with AQHYA members. Youth in this program are engaged in the horse industry at a fundamental level that is both fun and educational.

Participating Ranching Heritage breeders donate young horses for Young Horse Development participants to raise and train. Young horsemen and women learn responsibility and goal setting, important components of horse ownership – and life skills that can follow them for years to come. Encouraged by



good fun, as well as key education in the horse industry, youth learn to raise and train their weanlings. Youth must be 13 years old.

The priority application deadline for the 2021 program will be **August 15, 2020**, and the **late application deadline is October 1, 2020**. Apply by the priority deadline for the best chance of admission into the program and the most likely match with a horse closest to your home. Participants may be selected and matched with horses any time after **August 15**, with the majority being selected and matched with horses October through December 2020.

Youth can participate in the Young Horse Development Program with a donated foal or purchasing a Ranching Heritage Challenge-enrolled foal from a Ranching Heritage Breeder.

The [2021 Ranching Heritage Young Horse Development Program Application Form](#) is now available.

To learn more about program requirements and guidelines, please view the [2020 YHD Record Book](#).

Learn more about AQHA at <https://www.aqha.com/youth/programs/young-horse-development>.

## FAIR / SHOW NEWS

### WASHINGTON STATE JUNIOR HORSE SHOW AND YAKIMA COUNTY 4-H SHOWCASE PRESENT THE 2020 VIRTUAL HORSE SHOW AND SHOWCASE



Washington State



Jr Horse Show

4-H and Open Horse Show



The Washington State Jr Horse Show, in conjunction with The Yakima County 4-H Showcase, presents our 2020 Virtual Horse Show and Showcase!

We thank those from throughout Eastern Washington, who have given wholehearted interest and community support. Washington State Junior Horse Show, Inc., extends a hearty welcome to exhibitors, and friends to our 58th Annual Show. Washington State Junior Horse Show is sponsored by Washington State Junior Horse Show, Inc. and Washington State University.

Registration and entry dates are **August 10, 2020 through September 30, 2020**.

Read the entire Washington State Junior Horse Show Statement letter by clicking [here](#). This letter includes information on classes offered, as well as contact information for questions.

Click on this link for the entry information: <http://washingtonstatejrhorseshow.fairentry.com/>

## TEEN NEWS

### 4-H YOUTH SCHOLARSHIP AWARDED!

Congratulations Samantha! The 2020 4-H Youth Scholarship Award Recipients have been announced! Congratulations to Senior, Samantha Sealock of Yakima County, who was awarded a 4-H Scholarship from the Dettman Fund for WSU CAHNRS. Way to go Samantha! Go Cougs!

## STATE NEWS

### WASHINGTON STATE 4-H VIRTUAL HORSE JUDGING CONTEST TO BE HELD, SEPTEMBER 12

Information and Registration Forms Here!

As many of you may know, the State 4-H Fair has announced that the State Horse Judging Contest will not be offered at the 2020 4-H State Fair.

For 2020, the "State 4-H office" will be coordinating and managing the State 4-H Horse Judging Contest. It will be a virtual contest, utilizing the Virtual Horse Judging Platform offered by Purdue University. Purdue provides the virtual classes and does all the tabulation.

The virtual contest will occur on **Saturday, September 12, 2020**. The contest will start at 9:00 am and end at 11:30 am.

The full memo can be found [here](#). PLEASE READ IT CAREFULLY! It contains detailed information on the following:

- Registration forms
- Payment
- Contest Logistics
- Eligibility
- Contest Format
- Practice Contest (Two Opportunities and Optional)
- Recommendations for this Official Virtual Contest with Purdue
- Awards
- Registration Details and Payment Details-Please read carefully!!!

Link to the registration forms [here](#). Please contact Jennifer Leach with any questions at [jleach@wsu.edu](mailto:jleach@wsu.edu).

Jennifer Leach, WSU 4-H Equine Specialist

Pat Pehling, State 4-H Horse Judging Coordinator (Volunteer)

Kim Baker, Snohomish County 4-H Program Coordinator





## ALL OTHER NEWS



### NATIONAL 4-H COUNCIL SHARES SURVEY ON COVID-19 EFFECTS ON YOUTH MENTAL HEALTH AND LONELINESS

A new survey commissioned by National 4-H Council, and conducted by the Harris Poll, finds that 7 in 10 teens are struggling with their mental health in the wake of COVID-19. More than half of those surveyed shared that the pandemic has increased their feelings of loneliness, with 64 percent believing it will have a lasting impact on their mental health. The survey, conducted in May 2020, is among the first to examine the impact this unprecedented public health crisis has had on U.S. teens. The aims of the survey are to help practitioners gain a deeper understanding of the state of teen mental health and to gather teen perspectives on the issue as 4-H aims to empower young people with the resources and support to address their health and well-being head on.

Read the full article at

<https://4-h.org/media/new-survey-finds-7-in-10-teens-a-re-struggling-with-mental-health/>

### STATEWIDE 4-H EQUINE MEETING SCHEDULED FOR AUGUST 27!!

A Reminder – the upcoming State Equine Zoom meeting is scheduled for **Thursday, August 27th from 6:30 to 8:30 pm.**

Below is the link for the Thursday meeting. The basic agenda for the meeting will be:

1. Checking in—how are things going virtually
2. What has your county been doing for virtual education—sharing time
3. State Horse Judging Contest...and registration information and process.
4. Ideas for educational zooms and at home learning kits for horse program...and/or has anyone developed “learning kits” in their own county.

Please forward this information to your horse leaders and other interested 4-H families.

If you have questions, please feel contact me by email at [jleach@wsu.edu](mailto:jleach@wsu.edu), Jennifer Leach, Associate Professor, WSU 4-H Equine Specialist, Cowlitz County 4-H Youth Development

[https://urldefense.com/v3/\\_https://wsu.zoom.us/j/97600953895?pwd=M0VzY3NrY3BuNm5KV1JpSkc4QW5rdz09\\_!!JmPEgBY0HMsZNaDT!4YbbCCMAhXt7L\\_jS06delJ9ypYzh52Rc-sGYvmlidP2SQi4PuHNZOmVSBtUId\\$](https://urldefense.com/v3/_https://wsu.zoom.us/j/97600953895?pwd=M0VzY3NrY3BuNm5KV1JpSkc4QW5rdz09_!!JmPEgBY0HMsZNaDT!4YbbCCMAhXt7L_jS06delJ9ypYzh52Rc-sGYvmlidP2SQi4PuHNZOmVSBtUId$)

## ALL OTHER NEWS

### BUTTERFLIES AT FARMERS' MARKET!

The Master Gardener Youth team will hand out 100 packets to make a tissue paper butterfly 🦋 at the **August 30** Downtown Farmer's Market from 9:00 am until they are gone. Packets will be distributed first come -first serve. The packets include fun facts and puzzles. Kids don't need to be present. Hope to see you there.



### UPDATED INFORMATION ON TRACTOR SUPPLY COMPANY FALL PAPER CLOVER CAMPAIGN!

The latest information for the Fall TSC Paper Clover Campaign includes no major changes, but a few exciting additions.

- Plans are moving forward for a traditional Paper Clover, with 90% of funds going back to the State they are raised in (just like normal). This will take place **October 7-18, 2020**, both in store and online.
- Increased signage will be posted around the pin pad machines to help with donations, since PPE requirements and current procedures make it more difficult for cashiers to ask.
- As things change very rapidly right now, it's too early to say if it will be possible for 4-H clubs to be in store. But regardless, that will be state/community level decision. There is no pressure for kids to be in store.
- Even if 4-Hers can't physically be in store, a 4-H presence is still wanted there. Be thinking of contact-less ways you can promote in your local store, things like creating a display board. National 4-H Council will compile a list of those ideas and share them with states and local TSC stores both, so everyone is on the same page.
- National Council has a piece of great news. TSC is testing a very cool opportunity with us this fall. If folks donate using their TSC credit card, TSC will match that donation. More to come on that soon, but some Citi® card users should receive emails about it with the fine print as we get closer.

Council will have promotional materials on the MORC but those won't be available until the middle of September.

Thank you for everything you all do to make this partnership successful! - Sara Hutches, National 4-H Council, [Shutches@4-h.org](mailto:Shutches@4-h.org), (301) 675-2790

## SHARE YOUR STEM PROJECT OR ACTIVITY ON THE 4-H STEM SHOWCASE INSTAGRAM PAGE!

An [@4HSTEM](#) Showcase Instagram page has been created, and we would love to profile 4-Her's STEM projects from around the state on it. If it's science of any kind – tech, engineering, or math – we want to see it!

It's easy to share. Just send a jpeg with the 4-Her's first name, county name and project they are sharing to Michelle Green at [michelle.green@wsu.edu](mailto:michelle.green@wsu.edu). If the county has an Instagram page, we will tag them if it posts. We have 4-Hers doing awesome things, and we want to see them learning by doing!



## EXPLORE CONDITIONS FOR LEARNING AT HOME RESOURCES



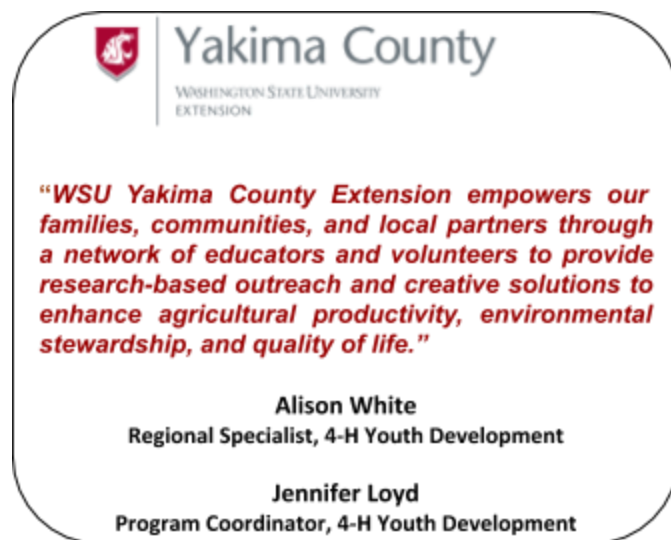
In the 2020-2021 school year, many school districts will rely on remote learning or a hybrid approach using both remote and classroom learning. AIR experts have put together a set of resources to help families and caregivers create safe, supportive, and engaging spaces for students learning at home. Click the link [Explore Conditions for Learning at Home Resources](#).

## A Reminder: COVID-19 Resources Available from WSU Extension

The WSU Extension COVID-19 Updates and Resources page is updated as new information becomes available. The Link to the page is <https://extension.wsu.edu/covid-19/>

## ADDITIONAL EQUINE RESOURCES ADDED TO HORSE PROJECT PAGE

Extension Horses COVID-19 Infographics for Equine Owners and Facilities have been added to the Horse Project page. They are located under the "Other Resources and Websites" link and are intended to provide general information. <https://extension.wsu.edu/4h/projects/stem/horse/horse-project-resources/>



## 4-H CALENDAR – DATES TO REMEMBER

\*\*\*\*Fair board meeting dates are listed below, but please contact the fair boards to find out how meetings are taking place. Due to COVID-19 concerns, these meetings should be occurring in an alternate format, no face-to-face meetings or gatherings. Fair contacts are listed below.

SEPTEMBER 2020	
	Public Presentations Contact Jenny Loyd 574-1600
1	Volunteer Awards Due, <a href="https://extension.wsu.edu/4h/for-volunteers/wastate-volunteer-recognition/">https://extension.wsu.edu/4h/for-volunteers/wastate-volunteer-recognition/</a>
2	Fireside Chat Series "Conflict Management" Please pre-register <a href="https://rebrand.ly/firesidechat2020">https://rebrand.ly/firesidechat2020</a>
4-27	Washington State 4-H State Fair, Puyallup – Virtual <a href="https://extension.wsu.edu/4h/fairs/state-4-h-fair/">https://extension.wsu.edu/4h/fairs/state-4-h-fair/</a>
Aug 10 - Sept 30	Washington State Junior Horse Show Virtual Show and Showcase, <a href="http://washingtonstatejrhorshow.fairentry.com">http://washingtonstatejrhorshow.fairentry.com</a>
OCTOBER 2020	
1	2020-2021 4-H Year starts for 4-H online enrollments.

7-18	Tractor Supply Fall Paper Clover Campaign	
10	6:00 pm, Volunteer Awards Goes Virtual, more information to follow	

### ALL Links to 4-H Virtual Showcase Judges Training Session Recordings are Now Available!

Have you thought about becoming a judge for 4-H? Are you already a judge for 4-H? Have you been through the basics of judging for 4-H? Can you make a successful 4-H comment sandwich? We are looking for current 4-H judges and new volunteers who have subject matter knowledge who are willing to learn, judge, and interact with 4-H youth virtually.

We have a few class sessions (now recorded) that are for everyone like "Technology Basics" and "Basics of Judging for 4-H" then we move into subject matter sessions.

Below is the outline for dates/times (recordings) and short descriptions for the training sessions. We will be collecting registration/contact information from those who wish to participate and creating a list to share around the state. Session 7, our final session updates/times, which will be a round table discussion format, and how to register for that zoom session is below.

To register/sign-up please follow the directions below for each session you wish to participate in (or follow the link for the recordings). Once registered (or have viewed the recordings)- If you want to be on the WA State 4-H Judges list please email Pam Watson at [pwatson@wsu.edu](mailto:pwatson@wsu.edu) with the subject line: Virtual 4-H Judges Training. In the body of the e-mail please list the sessions and subject matter/species/area of interest (this can be one email if participating in multiple sessions). Please register 12 hours in advance of the training(s) you wish to participate in to receive the password for participation. Each session (or time) has a different zoom address and password or recording link.

The timeline is as follows

- Recorded! 1st Session for all participants – Technology Basics, Saturday, July 18, 10:00 am-noon**, Recording about 2 hours,  
[https://wsu.zoom.us/rec/share/\\_MBElbfu025OWZXk0x7ZB7lhM9vdaaa81nQb8\\_VZyRpOQTtT\\_TbKot\\_Oi9oGq1K0?startTime=1595091927000](https://wsu.zoom.us/rec/share/_MBElbfu025OWZXk0x7ZB7lhM9vdaaa81nQb8_VZyRpOQTtT_TbKot_Oi9oGq1K0?startTime=1595091927000)
- Recorded! 2nd Session for all participants – Basics of Judging for 4-H, Saturday, July 18, 1:00-3:00 pm**, Recording about 2 hours  
<https://wsu.zoom.us/rec/share/69FpbJrz9VNOalnPx3j9Qu0dMdvMaaa80ClaqaEMy6Bmt7MAM9obwpl6jzxaadE?startTime=1595102805000>
- Recorded! 3rd Session – Performance Animals, Sunday, July 19, 1:00-3:00 pm (horse, dog, llama, goat-trail)** – This meeting had breakout rooms! Recording about 1 hour, 20 min., includes general session and llama/goat breakout discussion (about last 30 min.)  
<https://wsu.zoom.us/rec/share/3u1QMKH0tSRlb8-K7hHQWrcwP4rDX6a8h3lWqPYFyhILMDqJlb6iol7hMmFoe0mj?startTime=1595189439000>
**Horse breakout discussion- see document [here](#); session not recorded; Dog breakout discussion [https://emailwsu-my.sharepoint.com/personal/tracie\\_hanson\\_wsu\\_edu/Documents/Attachments/zoom\\_0.mp4](https://emailwsu-my.sharepoint.com/personal/tracie_hanson_wsu_edu/Documents/Attachments/zoom_0.mp4)**
- Recorded! 4th Session – Large Livestock, Sunday, July 19, 3:00-5:00 pm (beef, sheep, swine, goat, dairy cattle)**  
Recording about 1 hour and 40 min., all species stayed together for general discussion and more.  
[https://wsu.zoom.us/rec/share/4lt5Pena9WNIHlmX5xH5dL4GMdXXaaa80CVNr\\_pfmk1uMjNAuL6aO4RULo-Nv4sC?startTime=1595196394000](https://wsu.zoom.us/rec/share/4lt5Pena9WNIHlmX5xH5dL4GMdXXaaa80CVNr_pfmk1uMjNAuL6aO4RULo-Nv4sC?startTime=1595196394000)
- Recorded! 5th Session – Small Animals, Tuesday, July 21, 6:00-8:00 pm (poultry, rabbit, cavy, cat, pocket pet/world of small animals)**, Recording about 1 hour and 55 min., all species stayed together for general discussion and more.  
[https://wsu.zoom.us/rec/share/w-gtK-3w2TNIU8\\_B9HD2SKALFbjFT6a803lb\\_\\_RYyD5mUbnP-9IsY2YJ4XlTrwc?startTime=1595380031000](https://wsu.zoom.us/rec/share/w-gtK-3w2TNIU8_B9HD2SKALFbjFT6a803lb__RYyD5mUbnP-9IsY2YJ4XlTrwc?startTime=1595380031000)
- Recorded! 6th Plus Extended Sessions – Static Display items/Still life, Public Pres., Arts, Environmental, STEM, Textiles, Foods, EDU Posters, Activities, Contests and more!**  
**Saturday, July 25, start time 10:00 am-noon, and 1:00-4:00 pm** and order of presentations listed below  
**Session 6A part 1 – 10:00-11:00 am, Foods – Preservation and single entries/ cooking contests/ activities**  
**Session 6A part 2 – 11:00 am- Noon, Textile Arts – needle arts, single entries, quilting and contests/activities**  
Recording about 2 hours, stayed together the entire time  
[https://wsu.zoom.us/rec/share/5PR6Nrlqy01ftKStFjmV68bG5n4T6a8hiFL\\_vFexU4JYyX09ovRmEEqnzj-iE4F?startTime=1595696899000](https://wsu.zoom.us/rec/share/5PR6Nrlqy01ftKStFjmV68bG5n4T6a8hiFL_vFexU4JYyX09ovRmEEqnzj-iE4F?startTime=1595696899000)
- Session 6B Part 1 – 1:00-2:00 pm, Garden Science, Natural Resources, STEM, and Shooting Sports**, Recording – about 1 hour, stayed together the entire time  
[https://wsu.zoom.us/rec/share/78hMA6\\_e2D1Jb6\\_d-GfiWYUKXd\\_JT6a81iRNq\\_JbyErcwnWIFatleZMneQAvpdbl?startTime=1595707745000](https://wsu.zoom.us/rec/share/78hMA6_e2D1Jb6_d-GfiWYUKXd_JT6a81iRNq_JbyErcwnWIFatleZMneQAvpdbl?startTime=1595707745000)  
**Session 6B Part 2 – 2:00-3:00 pm, Educational displays/posters, Public Presentations/Demonstrations/General activities/Contests**, Recording – about 1 hour, stayed together the entire time,  
[https://wsu.zoom.us/rec/share/78hMA6\\_e2D1Jb6\\_d-GfiWYUKXd\\_JT6a81iRNq\\_JbyErcwnWIFatleZMneQAvpdbl?startTime=1595711488000](https://wsu.zoom.us/rec/share/78hMA6_e2D1Jb6_d-GfiWYUKXd_JT6a81iRNq_JbyErcwnWIFatleZMneQAvpdbl?startTime=1595711488000)

- **Session 6B Part 3 – 3:00-4:00 pm, Expressive Arts – Photography/videography, fine art, arts and crafts,**Recording – about 1 hour and 15 min., stayed together the entire time  
[https://wsu.zoom.us/rec/share/78hMA6\\_e2D1Jb6\\_d-GfiWYUKXd\\_JT6a81iRNq\\_JbyErcwnWIFatleZMneQAypdbl?startTime=1595715113000](https://wsu.zoom.us/rec/share/78hMA6_e2D1Jb6_d-GfiWYUKXd_JT6a81iRNq_JbyErcwnWIFatleZMneQAypdbl?startTime=1595715113000)
- **Final Session, Session 7, optional – 4-H Virtual Judges Round Table – All speakers and participants may attend.**  
**Tuesday, August 4, 6:00-7:30 PM,** Recording – about 1 hour and 15 min., stayed together the entire time,  
<https://wsu.zoom.us/rec/share/wY9QCe3g8TtlebH0USCWp9-BdTYX6a82nld-PpYnhrbSoeAj4NDxqVGP-vz6Z0f?startTime=1596589810000>

Please share this training event far and wide as we invite experienced and new volunteers to train/re-train as judges as we all navigate our new virtual world of 4-H Shows!

If you would like to be added to the WA State 4-H Virtual Judges list after taking your training sessions please contact Pam Watson at [pwatson@wsu.edu](mailto:pwatson@wsu.edu) with “Virtual 4-H Judge” in the subject line and list the subject areas you would like to be listed under, this can be one e-mail for multiple areas.

Pam Watson, M.Ed.

WSU Lewis County Extension, 4-H

[pwatson@wsu.edu](mailto:pwatson@wsu.edu)



## PARTICIPATING IN 4-H BEFORE PHASE 4

Washington 4-H Youth Development Program is not meeting face-to-face until your county reaches Phase 4.

\*When we are in Phase 4, some social distancing and other requirements will need to be followed for in-person activities.

### APPROVED ACTIVITIES

- Zoom/virtual meetings
- At home projects (arts and crafts, make posters, gardening, etc.)
- Create videos to share with your club to teach them something new
- Work with your animal projects at home
- Prepare projects to submit at fair or virtual showcases by yourself or with household members
- Work on record books by yourself or with household members
- Work on record books with members of your club virtually or on the phone
- Sharing projects over text, email, or phone with 4-H friends
- Prepare and practice a public presentation
- Virtual game nights with your club
- Virtual scavenger hunts



### NOT APPROVED ACTIVITIES

- In-person general club meetings
- In-person project meetings
- In-person project work with members outside of household
- Community service projects that require you to be in public, around those not a part of your household
- In-person Fair participation
- In-person Pre-Fair Event participation
- In-person shooting sports practice
- In-person horse or livestock clinics
- In-person Super Saturday events
- Any 4-H event where you are interacting in-person with people outside of your household



### SPECIFIC EXAMPLES

- **What if animal projects are housed at a leader's house? Is it okay for youth to come work with their animals?**

Animals must be fed and taken care of daily. Setting up a schedule for youth to work with their animals is necessary to prevent overlapping of members present at the same time.

- **What if our club wants to complete a community service project in support of COVID-19 related issues?**

We encourage 4-H members to be active in their communities. 4-H members should be participating in projects that they can do at home or be around others outside of their household.

- **Can we have a club meeting if we are outside and 6 feet apart?**

Not before Phase 4. Only virtual meetings allowed until then.

- **Can we meet for shooting sports if the kids' stations are all 6 feet apart?**

Not before Phase 4.

- **Can I meet with a member in their backyard to help them with their project?**

Not before Phase 4.

- **Can we shear our sheep or llamas together as a club?**

Not before Phase 4.

- **Can we ride horses together, since we are 6 feet apart?**

Not before Phase 4.



4-H 

WASHINGTON STATE UNIVERSITY  
EXTENSION



