

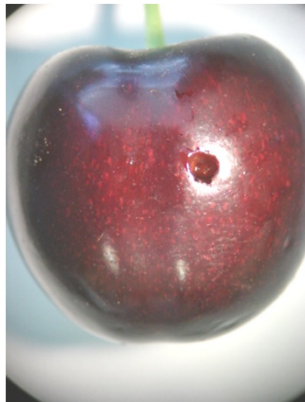
Fruit Pest Management Tips

Recognizing Western Cherry Fruit Fly *Rhagoletis indifferens*

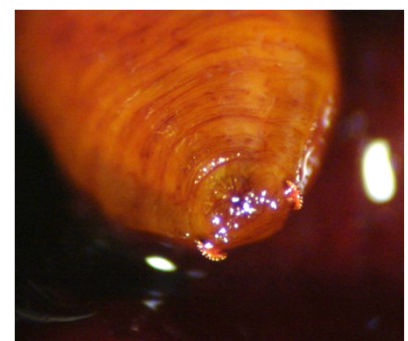
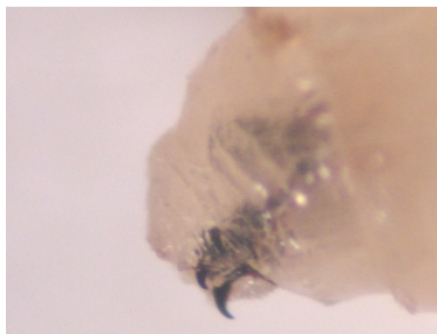
There is no tolerance for this pest in harvested fruit. Early detection of the fly on sticky traps or maggots in unharvested fruit is ESSENTIAL for pest eradication.



Cherry fruit fly are monitored with commercial yellow sticky traps baited with lures. Traps out by mid-May and fly activity continues into August. These flies are about 1/5" long and have a distinct banding pattern on the wings.



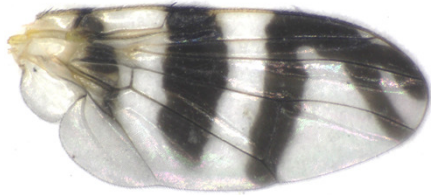
It is difficult to detect the maggot in fruit until the mature maggot eats its way out of the fruit. A mature maggot is about 1/4- 5/16" long. The maggot pupates in soil.



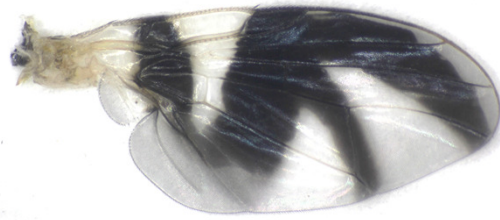
The translucent white maggot is legless without a head capsule, but with visible mouth hooks at the head end and fan-like prothoracic spiracles behind the head.

Fruit Fly Wing Patterns

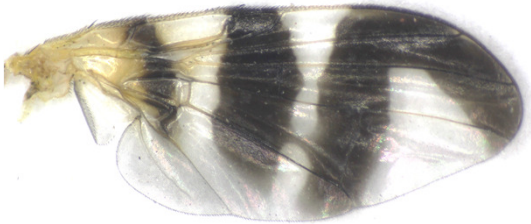
of flies commonly found in PNW tree fruits



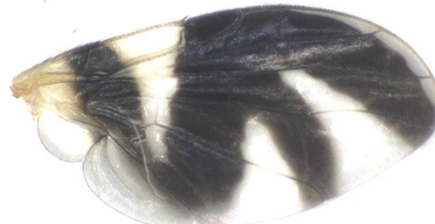
Western Cherry Fruit Fly
Rhagoletis indifferens
Wing size = 3.5 mm (0.14 inch)



Apple Maggot Fly
Rhagoletis pomonella
Wing size = 4.1 mm (0.16 inch)



Walnut Husk Fly
Rhagoletis completa
Wing size = 4.3 mm (0.17 inch)



Snowberry Maggot Fly
Rhagoletis zephyria
Wing size = 3.5 mm (0.14 inch)

Management:

Regularly updated WSU recommendations on pest management of western cherry fruit fly can be found on line at these websites:

For homeowners-

- WSU Extension Hortsense at <http://hortsense.cahnrs.wsu.edu/Home/HortsenseHome.aspx>
- Pacific Northwest Insect Management Handbook <https://pnwhandbooks.org/insect/tree-fruit/cherry/cherry-western-cherry-fruit-fly>

For commercial producers

- WSU Crop Protection Guide for Tree Fruits in Washington <http://www.tfrec.wsu.edu/pages/cpg/>
- Pacific Northwest Insect Management Handbook <https://pnwhandbooks.org/insect/tree-fruit/cherry/cherry-western-cherry-fruit-fly>

Contributors-

Mike Tobin, No. Yakima Conservation District
Dr. Wee Yee, USDA-ARS, Wapato
Jeff Upton, Yakima Co Hort Pest & Disease Board
Dr. Mike Bush, WSU Extension- Yakima County
Mike Klaus, WSDA- Yakima



Product names have been used to simplify information; no endorsement is intended. Always read the pesticide label before purchasing and applying pesticide products. WSU Extension programs and employment are available to all without discrimination. Evidence of noncompliance may be reported through you local Extension office. Copies of this document may be available at the WSU Yakima County Extension Office, call 509-574-1600. Created September 2017