



4-H Friday Update

November 6, 2020

WSU Grant County Extension 4-H Program

LINKS:

[Friday Update Archive](#)

[Grant County 4-H](#)

[WSU 4-H Youth Development Program](#)

[4HOnline Registration](#)

[Youth Livestock Producers](#)

[Report Your 4-H Volunteer Hours](#)

[Volunteer Training](#)

[Washington 4-H Volunteer Orientation Modules](#)

[WSU Put the Child First](#)

[4-H Forms & Materials](#)

[Financial Forms](#)

[4-H Club Officer Resources](#)

[4-H Policies and Procedures Handbook](#)

[4-H Tuesday News](#)



WSU Extension programs and employment are available to all without discrimination. Evidence of noncompliance may be reported through your local Extension office.

This email is for WSU 4-H communication and educational purposes only. Reference to commercial product(s), commercial entities, or trade names does not imply endorsement by WSU or bias against those not mentioned.

Requests for reasonable accommodations for persons with disabilities and special needs should be made at least two weeks prior to an event by contacting the WSU Grant County Extension Office: 509-754-2011, ext. 4313.

In this update:

- NOTICE ABOUT PAYING FEES AT THE OFFICE
- 4-H 3D Printer Available for STEM Project
- Receive a Welcome to the 2020-2021 4-H Year Kick Off Kit!
- Report Your Volunteer Hours Each Month
- County Meetings Scheduled
- 4-H Club Financial Documents Were Due October 31
- Regional Office Hours
- Mars Base Camp 4-H STEM Challenge
- Post Your Photos!
- 4-H Enrollment
- Youth Participation Requested!
- December Class Added! Join In! Register for Experience 4-H Virtual Zoom Classes!
- 4-H at Home Hands-on Activities for Kids
- “On Target Tuesdays” Webinar Series!
- Veterans of Foreign Wars (VFW) Youth Scholarships
- WSU Extension Adult/Youth Interactions During COVID-19
- Washington State 4-H – WSU Tuesday News

Happy Friday

It is November already and this stretch of nice weather reminds us how fortunate we have been. During this month of November, I encourage each of you to reflect within yourself and be thankful—even for the little things.

We finished our Kick Off series and are working on planning new leader trainings. Club financial documents are coming to the office (thank you leaders!). Washington State 4-H has created welcome back kits for members who enroll early. With many of our leaders completing their kick off updates, enrollments will soon be able to be complete.

Enjoy this first weekend of November.

Carolyn Russo

Interim 4-H Program Coordinator
grant.4h@wsu.edu

NOTICE ABOUT PAYING FEES AT THE OFFICE

We prefer you mail your 4-H Enrollment fee payments but if you are planning on coming to the office, please make an appointment with Abby. The office is currently closed to the public. Abby can record your information and meet you out front to collect the payment.

4-H 3D Printer Available for STEM Project



Grant County WSU Extension is proud to announce the addition of a 3D printer for Grant County 4-H! Thanks to a grant from Avista, we were able to purchase a printer, and are now able to offer 3D printing as a STEM project. 3D printing lets you create 3-dimensional objects from digital design files.

If you or a club member would like to learn more on how to utilize the 3D printer, please contact Abby Simonson, abby.simonson@wsu.edu

Receive a Welcome to the 2020-2021 4-H Year Kick Off Kit!



4-H KICK OFF KIT

We are celebrating the 2020-2021 4-H year with a 4-H Kick-Off Kit. Those who enroll early will receive a welcome member kit to help them kick off their new 4-H year.

Each kit will include a 4-H Notebook, mood pencil, sharpie, and a 4-H logo mask!

Enroll today at <https://v2.4honline.com>.

Report Your Volunteer Hours Each Month

If you are a volunteer leader, you need to report your volunteer hours at volunteers.cahnrs.wsu.edu/logon.aspx. Your user name will be either your last name only or your first & last name with a space in between. The password is password! (don't forget the exclamation point).

If you are unable to log in to the volunteer database, or if you have questions, please contact the Laurie, berensl@wsu.edu.

List of Activity Types and Examples of What Qualifies as Volunteer Activities:
(You can add hours to, or edit previous months entries at any time for the current year.)

Club/County 4-H Event

Club fundraisers, club meetings, training shows, community service projects, etc.

Deliver an Educational Activity

Serving as a presenter, chaperone, leader, etc...of a program meeting, training event, clinic, or that has an educational objective and is planned as a 4-H event.

Help at Fair

Work performed as a 4-H volunteer (not a Superintendent, Director, or Judge) at County Fair, or State 4-H Fair.

Prepare for Educational Training

Any planned activity prior to a qualified Educational Activity which you engage in to make the activity possible, e.g., shopping for project supplies, preparing activities, project committee meetings, etc.

Support/Office Work

Correspondence, phone calls, preparation and submission of club tax filing, **reporting of volunteer hours**, council meetings, committee meetings, fundraising committee, etc.

(If you do not see your activity listed, select a type that best describes your activity.)



County Meetings Scheduled

Horse Committee –Thursday November 12, 2020 at 7-8pm

Join Zoom Meeting from PC, Mac, Linux, iOS, or Android:

<https://wsu.zoom.us/j/94867664273>

Meeting ID: 948 6766 4273

Phone:US: +1 253 215 8782 or +1 669 900 9128 or +1 646 558 8656

Next Leader Council Meeting will be Monday December 7, 2020 at 7pm

(meeting link to be announced in coming weeks)

4-H Club Financial Documents Were Due October 31

4-H Club Financial Documents

Due October 31

- Annual Financial Summary Form
- Treasurer's Book (including a ledger)
- Secretary's Book (Minutes from all club meetings)
- Current copy of Bank Signature Card
- All receipts and deposit slips
- Club Property Inventory

[Download 4-H Club Financial Documents Here.](#)

Regional Office Hours

Leaders, volunteers or members who have questions are able to attend our regional virtual office hours. They are scheduled Monday-Thursday from 2-3pm. To join follow this zoom link:

<https://wsu.zoom.us/j/99817857399?pwd=SDh2Y2Y5YjdXazlnTIRjdVVNdGIZZz09>

This is a great chance to meet with regional coordinators and staff from Grant, Chelan and Douglas counties.

Mars Base Camp 4-H STEM Challenge



The 2020 4-H STEM Challenge, Mars Base Camp, gives kids fun hands-on lessons in engineering, physics, computer science and agriculture. Choose from family-sized or classroom-sized today!

[Order Your Kits Here.](#)

Catch up on our latest STEM month livestreams! [Watch the Mars Trivia Challenge](#) with celebrity host, Bill Nye, and a live Q&A with NASA scientists who answered questions on all things space travel. Follow 4-H on Facebook for more! [Catch Up Here](#)

Post Your Photos!



We are updating our banner! Post photos of you and/or your 4-H project in the [comments of this post](#) to be used for our Facebook covers throughout the next year!

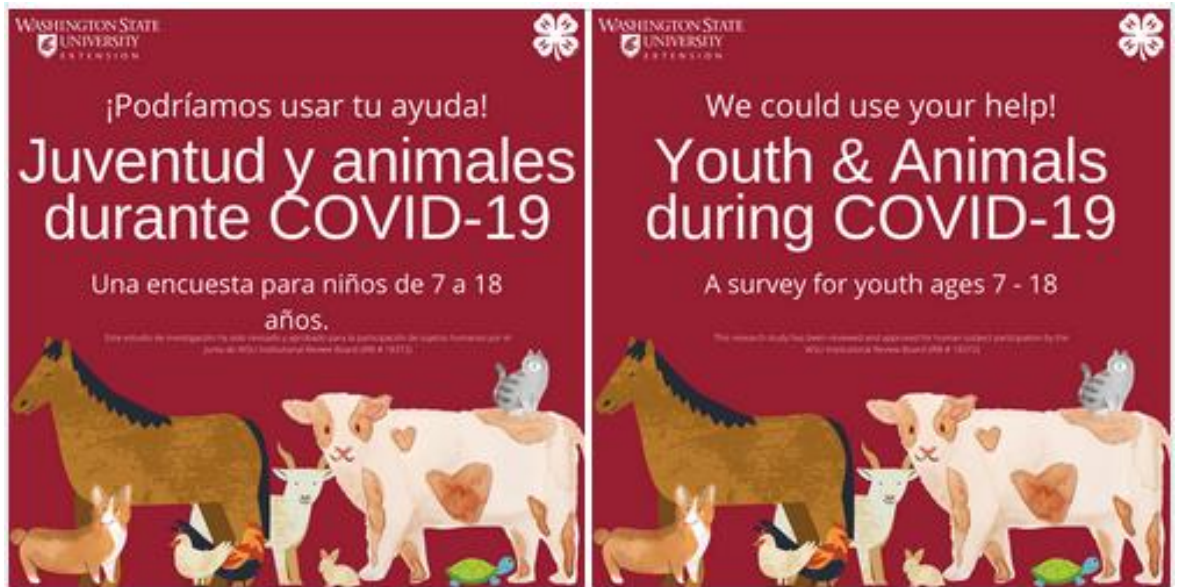
4-H Enrollment

Enrollment for the 20-21 program year is open. Please log in to [4honline](#) and update your profile.

Enrollment fee this year is \$25 for those who enroll by the January 31 deadline. Enrollment fee is \$50 after the deadline.

- = Leaders Council is paying five dollars toward the total fee for the first 100 members who re-enroll and pay. Please bring 20 dollars, either cash or check, to the Extension Office. Your name will be recorded on a spreadsheet at the front counter. This is only available for the first 100, please be swift.
- = For those seeking assistance please complete a [4-H Membership Fee Scholarship Application](#).

Youth Participation Requested!



We want to know more about how young people are spending their time during social isolation from COVID-19, especially when it comes to youth and animals! Please consider asking youth age 7-18 in your household to complete a brief (5 to 15 minute) survey.

The online [Survey of Youth and Animal Interaction During COVID-19](#) is available in English and Spanish.



December Class Added! Join In! Register for Experience 4-H Virtual Zoom Classes!

Looking for something fun to do on Saturday afternoons? Experience 4-H is a monthly 40 minute introduction to 4-H programs and projects, offered to interested youth and families without obligation. Curriculum and instructors from many 4-H sources will be used. One or two sessions will be offered per month; topics will vary. This is a great way to try something new! Whether you are new to 4-H or a longtime member, you are invited to join Washington 4-H and find your spark! FREE Zoom classes are open to ages 6 – 18, unless otherwise specified. Parents must attend with youth under the age of 9. Please pre-register. After registering, you will receive an email confirmation and class supply list.

ENHANCE YOUR 4-H SHOOTING SPORTS CLUB AND PROJECT MEETINGS

ON TARGET TUESDAYS

Series of FREE Shooting Sports Workshops featuring Olympic Athletes and USA Top Shooters

SHOTGUN • RIFLE • ARCHERY • PISTOL

6:30-7:30 pm PST

OCT 6, 13, 20 & 27 NOV 3, 10 & 17 DEC 1 & 8

Register for these webinars through your Zoom account:
https://wsu.zoom.us/join/register/WN_7KofRu9TTm0Uewf7mxLuA

Sponsored by Washington State 4-H Shooting Sports

FREE

SHOOTING SPORTS

Questions? dan.white@wsu.edu a.hernandez_hall@wsu.edu

The mission of 4-H is to empower youth to reach their full potential, working and learning in partnership with caring adults. Extension programs are open to all without discrimination. Evidence of noncompliance may be reported through your local Extension office.

Join us for a web series of workshops featuring top USA Shooting Sports Athletes and Olympic Competitors. This workshop is an enhancement to 4-H program and club meetings. Hear from top athletes in Archery, Rifle, Shotgun and Pistol as well as representatives from the MidwayUSA foundation and Hornady ammunition. Learn how they achieved excellence in their fields and careers.

[Webinar registration link as well as biographies for all webinar presenters, can be found here.](#)

Veterans of Foreign Wars (VFW) Youth Scholarships

The VFW Auxiliary is proud to offer scholarships and participate in scholarship contests that promote patriotism, assist students in furthering their education and help students reach their full potential. If you are a democracy-loving high school student interested in a \$30,000 college scholarship or a patriotic middle school student interested in winning \$5,000, these scholarships may be for you.

Scholarship opportunities for all youth grades 3-12 through the VFW (Veterans of Foreign War) both local (WA State) and National.

[Read the rules and eligibility requirements, and download the 2020-21 entry forms applications here.](#) Entries are due to the VFW, located in our office building, by October 31.

WSU Extension Adult/Youth Interactions During COVID-19

As we are all in communication via technology with youth at this time, I would like to take this opportunity to remind everyone of WSU Extension's policy on interactions. Under this policy, AT NO TIME should one adult be meeting or communicating with youth WITHOUT the presence of another adult. This policy pertains to Zoom conferences, telephone conversations, text messages, social media posts, etc. To facilitate communication, make certain to cc another adult on written communications, and invite another adult to be present during virtual meetings. The second adult is recommended to be a WSU volunteer; other adults can serve in this role if you're in a pinch.

Jana S. Ferris | Volunteer Specialist, WSU Extension | 425.595.2950

Washington State 4-H – WSU Tuesday News



See more of Washington State 4-H – WSU...read the [Tuesday News](#) each week.

In response to COVID-19, the WSU Extension offices are closed to the public until further notice. All Grant County WSU

Extension staff and faculty are working and available by phone, email, or appointment only. Visit your local extension office website for contact information and your county health department for information regarding COVID-19.

4-H Meetings

Horse Committee –Thursday November 12, 2020 at 7-8pm

Join Zoom Meeting from PC, Mac, Linux, iOS, or Android:

<https://wsu.zoom.us/j/94867664273>

Meeting ID: 948 6766 4273

Phone:US: +1 253 215 8782 or +1 669 900 9128 or +1 646 558 8656

Next Leader Council Meeting will be Monday December 7, 2020 at 7pm
(meeting link to be announced in coming weeks)

Note: In response to Covid-19, all in person meetings are cancelled until further notice. 4-H members are not permitted to meet face to face until phase four. Virtual Meetings will be announced in the 4-H Friday Update.

4-H Due Dates

General Due Dates for Grant County 4-H

October 1	New 4-H Year Starts and Enrollment Begins
October 1	Volunteer Hours for the Current Year are Due
October 31	4-H Club Annual End of Year Financial Reporting Forms are Due to the Extension Office. (4-H clubs that do not handle finances are still required to turn in a report that shows no funds are being handled.)
December 1	Annual 4-H Chartered Club Plan is Due
December 1	Annual 4-H Family Group Plan is Due
January 31	Re enrollment Deadline for Returning 4-H Club Members – Online Registration - https://v2.4honline.com/#/user/sign-in . (\$25 late fee after January 31)
April 1	Ken Ardell Scholarship Applications are Due
May 1	New Member Enrollment Deadline if planning to show at current year fair.
June 15	Secretary Books are Due to Extension Office
July 15	Youth for the Quality Care of Animals (YQCA) Completion Deadline

Annual Animal Ownership Dates for Grant County Fair

January 1	Dairy - Sale Springer & Bred Heifer Certificates are Due
April 1	Horse Ownership Certificates are Due
April 1	Market Steer Ownership Date (Weigh & Tag Day TBA)
May 1	Non Sale Dairy Ownership Certificates are Due
May 8	Market Swine Ownership Date
May 12	Llama Ownership Date
May 15	Poultry Ownership Date
June 15	Rabbit Ownership Date (updated 1.2020)
June 8	Market Goat Ownership Date (Weigh & Tag Day TBA)
June 10	Market Sheep Ownership Date (Weigh & Tag Day TBA)

Annual Animal Ownership Dates for Othello Fair

February 1	Dairy - Sale Springer & Bred Heifer Certificates are Due
April 1	Horse Ownership Certificates are Due
April 30	Market Steer Ownership Date
May 1	Non Sale Dairy Ownership Certificates are Due
July 15	Poultry Ownership Date
July 15	Rabbit Ownership Date
June 12	Llama Ownership Date
June 15	Market Swine Ownership Date
June 15	Market Sheep Ownership Date
July 8	Market Goat Ownership Date

Note: If you have project animal issues (sickness, won't breed, or death,) please contact the Extension Office. Hardship cases will be considered to allow you to show at fair.

Information for Volunteers and 4-H Club Volunteer Leaders

New 4-H Year Annual Fall Kick Off Meeting

General club leaders, family 4-H group leaders, and volunteers assisting with 4-H finances are **required** to attend one of the annual Fall Kick-Off meetings. All leaders and prospective new leaders welcome! Kick Off meeting times are announced in the 4-H Friday Update each new 4-H year.

4-H Online Enrollment: Start of the New 4-H Enrollment Year is October 1

The 4-H year begins October 1 and ends September 30. Youth who have reached their 5th birthday before October 1 of the current 4-H year through youth who have not reached their 19th birthday before October 1 of the current 4-H year are eligible to enroll in a 4-H club. Enroll in 4-H using the [4HOnline system](https://v2.4honline.com/#/user/sign-in) (<https://v2.4honline.com/#/user/sign-in>). There is an additional \$25 fee for late enrollments. Please use Google Chrome or Firefox Web Browser for best results.

Grant County 4-H is able to offer financial hardship assistance scholarships on a case by case basis, some or all of the \$25 per member fee may be covered. [Membership Fee Scholarship Application](#).

Report Your Volunteer Hours Each Month

Volunteer hours are due each year by October 1. If you are a volunteer leader, you need to report your volunteer hours at <https://volunteers.cahnr.wsu.edu/logon.aspx>. Your user name will be either your last name only or your first & last name with a space in between. The password is *password!* (don't forget the exclamation point). If you are unable to log in to the volunteer database, or if you have questions, please contact the Extension Office. **You CAN – and if possible, please do**, put in your volunteer hours retroactively.

WSU Put the Child First Training Video

[Register for volunteer courses](#).

WSU Put the Child First – Enrollment Key: GRANT/ADAMS4H

4-H 101 Leader Training Parts 1 and 2 for Club Leaders and Volunteers

Are you thinking about starting a new 4-H club or family 4-H group? Are you signing up as a volunteer with 4-H for the first time? Are you a returning volunteer and have not completed 4-H 101 Leader Training? If so, please contact Carolyn Russo;grant.4h@wsu.edu, 754-2011 ext. 4313.

New 4-H volunteers are required to complete the 4-H 101 Volunteer Leader Training Parts 1 & 2. This training (how to plan club programming, ensure you are up-to-date on WSU and state 4-H policies and procedures, risk management, etc.) will prepare you to become a certified 4-H volunteer of a 4-H club or group.

WSU 4-H Volunteer Application Forms: [Fillable Word Version](#); [PDF Version](#). All volunteers signing up for the first time must submit application forms to the Extension Office.

4-H 101 Volunteer Leader Training Part 1 (Prerequisite for 4-H 101 Part 2):

- Completed WSU 4-H Volunteer Application on file at the Extension office.
- Complete the [Washington 4-H Volunteer Orientation Modules](#). Enrollment Key: GRANT
- Complete the [WSU Put the Child First](#) training video. Enrollment Key: GRANT/ADAMS4H

4-H 101 Volunteer Leader Training Part 2

- Trainings are held in Grant County and Adams County. Scheduled training dates are announced in the [4-H Friday Update](#) and an RSVP to the Extension Office is required.

Preserve the Taste of Summer Training (Required of Food Preservation Projects Leaders)

All 4-H project leaders leading food preservation projects and activities will need to have completed this online food preservation program training series. The cost of the series is \$25.00. [Details and Registration](#).

Shooting Sports Training (Required for Shooting Sports Project Leadership)

Additional 4-H Shooting Sports Training for specific shooting sports disciplines is required for certified 4-H volunteers to lead 4-H Shooting Sports Projects. 4-H volunteers interested in leading shooting sports projects should contact Carolyn Russo;grant.4h@wsu.edu, 509-754-2011 ext. 4313. You will be notified when 4-H Shooting Sports Trainings are scheduled in WA or ID.

4-H Request to Fundraise Form

To be in compliance with 4-H policy, all fundraising activities need prior approval from the county 4-H Program Coordinator or 4-H Youth Development Regional Specialist. A [request to fundraise form](#) is to be turned in to the Extension Office within 5 days prior to the fundraising activity of your club/group.

HEART

relating, caring



HEAD

managing, thinking



HEALTH

being, living



HANDS

giving, working

