



# 4-H Friday Update

September 28, 2018

WSU Grant County Extension 4-H Program

[Friday Update Archives](#)

[Grant-Adams 4-H](#)

[WSU 4-H Youth Development Program](#)

[4-H Online Registration](#)

[Youth Livestock Producers](#)

[Report Your 4-H Volunteer Hours](#)

[E-Learning for 4-H Volunteers](#)

["Put the Child First"](#)

[Materials and Forms](#)

[Volunteer Training](#)

[Financial Forms](#)

[4-H Club Officer Resources](#)

[4-H Policies and Procedures Handbook](#)



WSU Extension programs and employment are available to all without discrimination. Evidence of noncompliance may be reported through your local Extension office.

This email is for WSU 4-H communication and educational purposes only. Reference to commercial product(s), commercial entities, or trade names does not imply endorsement by WSU or bias against those not mentioned.

Requests for reasonable accommodations for persons with disabilities and special needs should be made at least two weeks prior to an event by

## In this update:

- [New 4-H Year Annual Fall Kick-Off Scheduled Meetings](#)
- [4-H 101 Part 2 Volunteer Leader Training Tentative Dates](#)
- [Inspire Kids to Do Contest Photo Submission Deadline](#)
- [Eastside 4-H Teen Rally: November 2nd-4th, 2018](#)
- [National Youth Science Day \(NYSD\)](#)
- [Why is the Ocean Salty?](#)
- [REAL Media 4-H](#)
- [4-H Projects Spotlight: Science Discovery](#)
- [4-H Youth Development Program at a Glance](#)

## Happy Friday!

**IMPORTANT:** 4-H Enrollment for 2018-2019 begins October 1<sup>st</sup>! However, all 'general' club and family group leaders must attend the 4-H Kick-Off event on Tuesday, October 2<sup>nd</sup>, before members can re-enroll. Until I receive club confirmation on projects being offered and project leaders for those projects, members will not be able to choose projects within a club. Enrollment fee is \$25 per member as it was last year. However there are some changes due to 4hOnline credit card complications and late enrollments last year. We will be accepting only check and cash payments for enrollments this year – there will not be a credit card option. Also, there has been a \$25 late fee added for RE-ENROLLMENTS after December 31<sup>st</sup>. NEW members will not be assessed a late fee, but must be enrolled by April 1<sup>st</sup> if planning to have an animal project. Leaders – if you have not RSVP'd for the 4-H Kick-Off on October 2<sup>nd</sup>, please do so ASAP to [jmkiehn@wsu.edu](mailto:jmkiehn@wsu.edu). If you can't make the Kick-Off on Tuesday, there is one scheduled in Ritzville on Wednesday. See below for more details.

The first Leader's Council meeting of the new 4-H year will be held at Time-Out Pizza in Othello this coming Monday, October 1<sup>st</sup> at 7:00 pm. This meeting is open to all 4-H leaders and those interested. And don't forget Teen Rally in Spokane coming soon! See below for details and links to learn more about opportunities offered to our 4-H teens.

I mentioned last week that I would try to have 4-H State Participation Ribbon Winners in this week's Friday Update, but I'm still waiting on the last of the results, so hopefully they will be in next Friday.

## Have a great weekend!

WSU Extension Program Coordinator  
[jmkiehn@wsu.edu](mailto:jmkiehn@wsu.edu)

---

## New 4-H Year Annual Fall Kick-Off Scheduled Meetings

The 4-H year begins on October 1, 2018. General club leaders, family 4-H group leaders, and volunteers assisting with 4-H finances are **required** to attend one of the annual Fall Kick-Off meetings. All leaders and prospective new leaders are welcome and encouraged to attend! Kick-Off meeting times are announced in the 4-H Friday Update.

### “Kick-Off” schedule:

- **October 2** – Moses Lake – Grant County Fairgrounds  
4-H Building – 5:30 - 8:00 p.m.

Please **RSVP ASAP** to [jmkiehn@wsu.edu](mailto:jmkiehn@wsu.edu).



- **October 3** – Ritzville – WSU Extension Office – 6 PM
- **October 4** – Davenport – Details TBA

---

## 4-H 101 Part 2 Volunteer Leader Training Tentative Dates

New 4-H volunteers are required to complete the 4-H 101 Volunteer Leader Training Parts 1 & 2. See details below in the Friday Update for 4-H 101 Volunteer Leader Training Part 1 which is a prerequisite for Part 2.

**Saturday, November 3, 2018** – at a Super Saturday in Othello, WA  
Time and details to be announced.

**Monday, November 5, 2018** – Ritzville, WSU Extension Office  
Tentative time: 5:45 – 8:45 p.m.  
Watch for details. RSVP to Karen at [robertk@wsu.edu](mailto:robertk@wsu.edu) or 509-659-3209.  
Minimum 5 firm RSVPs required

**Tuesday, November 13, 2018** – Moses Lake, WSU Extension Office  
Tentative time: 5:30 – 8:30 p.m.  
Watch for details. RSVP to Jeannie at [jmkiehn@wsu.edu](mailto:jmkiehn@wsu.edu) or 509-754-2011 ext. 4309  
Minimum 5 firm RSVPs required

---

## Inspire Kids to Do Contest Photo Submission Deadline

4-H's [Inspire Kids to Do](#) photo submission deadline is: **September 30**. Enter the Inspire Kids to Do Contest and you could win a **\$10,000** scholarship for your child – and your state 4-H program could receive **\$10,000!**

Submit a photo that shows how your child inspires themselves or others to do with purpose for themselves, their family, community, country or the world. The photo submission contest is open to legal guardians of children between the ages of 5 and 17.



## Eastside 4-H Teen Rally: November 2nd-4th, 2018

Get your Ticket to [Healthy Living Eastside 4-H Teen Rally!](#)

**Location:** Spokane WSU Campus

**Participants:** 7th-12th Grade

**Cost:** Early Bird Registration \$99 (Before October 10th) – Late Registration \$115 (After October 10th-October 15th)

**Registration Link:** <https://4hteenrally.brownpapertickets.com>

**Hotel Address:** Fairfield Inn – 311 N Riverpoint Blvd, Spokane WA 99202.

**Visit the [4-H Camps and Rallies Page](#) for Details.**

---

## National Youth Science Day (NYSD)



The NYSD celebration kicks off October 1, and coding events will be taking place throughout October!

Guess what!? You don't need technology to enjoy this year's 4-H National Youth Science Day coding challenge! Check out the 4-part [#4HNYSD](#) computer science activity: <http://bit.ly/2DmKLxX>.

[Order your kit today and join the celebration!](#)

---

## Why is the Ocean Salty?



Find out how rocks and dirt on land make the ocean so salty. You can also catch *Ask Dr. Universe* on [Northwest Public Broadcasting](#).

[Watch the video](#)

---

## REAL Media 4-H

[Washington State 4-H](#) and Rutgers University are teaming up to present REAL Media, for 4-H youth ages 13-17. For participating, club leaders and members can **earn cash incentives**. Members get to participate in a [contest](#).

[Watch a 2-minute video](#) explaining more about the program. If you would like to participate in this awesome program, have your parent or guardian fill out and submit the [consent form](#).



## 4-H Projects Spotlight: Science Discovery

### Science Discovery

Want to learn more about science without jumping headfirst into a project such as robotics or food science? [Science discovery](#) projects teach kids the skills to be a scientist while learning about topics such as whales, rocks, and recycling.

[Science Discovery Project Resources](#)

#### 4-H Project Resources:

[WSU Extension 4-H Projects and Publications Catalog](#) | [National Curriculum](#) | [Shop 4-H Catalogs](#)



## 4-H Youth Development Program at a Glance

The goal of 4-H is to develop citizenship, leadership, responsibility and life skills of youth through [experiential learning programs](#) and a positive youth development approach.



### WHO

4-H is America's largest youth development organization.



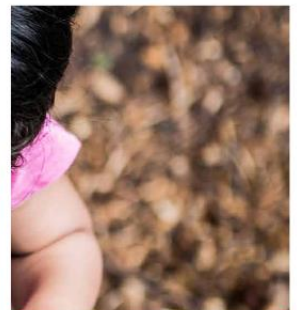
### WHAT

We empower young people with the skills to lead for a lifetime.



### HOW

Youth collaborate with caring adult mentors to lead hands-on projects in areas like science, health, agriculture and citizenship. Mentors provide a positive environment where youth learn by doing. This 4-H experience is delivered by a community of more than 100 public universities across the nation.



### IMPACT

This experience grows leaders with life skills like confidence, independence, resilience and compassion. This produces 4-H'ers who are 4X more likely to give back to their communities, 2X more likely to make healthy decisions and 2X more likely to pursue STEM opportunities.

## Important Upcoming Dates

<b>September</b>	<p><b>Report Your Volunteer Hours</b> 😊</p> <p>Volunteer hours are due each year by October 1</p>
<b>October 1</b>	<p><b>New 4-H Year Starts and Enrollment Begins</b></p> <p>The 4-H year begins October 1 and ends September 30 Enroll in 4-H using the <a href="https://www.4honline.com">4HOnline system</a> (<a href="https://www.4honline.com">https://www.4honline.com</a>)</p>
<b>October 1</b>	<p><b>Leaders Council Meeting</b></p> <p>Othello Time Out Pizza 7:00 p.m.</p>
<b>October 2</b>	<p><b>New 4-H Year Annual Fall Kick-Off Meeting</b></p> <p>Moses Lake - Grant County Fairgrounds; 4-H Building 5:30 - 8:00 p.m.</p>
<b>October 3</b>	<p><b>New 4-H Year Annual Fall Kick-Off Meeting</b></p> <p>Ritzville - WSU Extension Office 6:00 p.m.</p>
<b>October 4</b>	<p><b>New 4-H Year Annual Fall Kick-Off Meeting</b></p> <p>Davenport Details TBA</p>
<b>October 11</b>	<p><b>Horse Leader Committee Meeting</b></p> <p>Grant County Fairgrounds Fuller Building 7:00 p.m.</p>
<b>October 16</b>	<p><b>4-H/FFA Livestock Sale Committee Meeting</b></p> <p>Grant County Fairgrounds Fuller Building 7:00 p.m.</p>
<b>October 19-21</b>	<p><b>Washington State 4-H Forum</b>   Red Lion Spokane at the Park <a href="#">Forum Facebook Page</a>   <a href="#">WA State 4-H Forum Web Page</a></p>
<b>August 31 – September 23</b>	<p><a href="#">Washington State 4-H Fair</a>   <a href="#">WA 4-H Fair Exhibitor Guide</a></p>
<b>November 3</b>	<p><b>4-H 101 Part 2 Volunteer Leader Training (Tentative Details)</b></p> <p>At a Super Saturday in Othello, WA Time and details to be announced</p>
<b>November 2 – 4</b>	<p><a href="#">Eastside 4-H Teen Rally</a></p> <p>Spokane WSU Campus</p>
<b>November 5</b>	<p><b>4-H 101 Part 2 Volunteer Leader Training (Tentative Details)</b></p> <p>Ritzville, WSU Extension Office Tentative time: 5:30 – 8:30 p.m. Watch for details and/or changes. RSVP to Karen at <a href="mailto:robertk@wsu.edu">robertk@wsu.edu</a> or 509-659-3209. Minimum 5 firm RSVPs required</p>
<b>November 13</b>	<p><b>4-H 101 Part 2 Volunteer Leader Training (Tentative Details)</b></p> <p>Moses Lake, WSU Extension Office Tentative time: 5:30 – 8:30 p.m. Watch for details and/or changes. RSVP to Jeannie at <a href="mailto:jmkiehn@wsu.edu">jmkiehn@wsu.edu</a> or 509-754-2011 ext. 4309. Minimum 5 firm RSVPs required</p>



## 4-H Meetings & Due Dates

**Grant-Adams 4-H Leaders Council** meets the **first Monday** of every other month; **7:00 PM**; alternating between Moses Lake and Othello:

**Moses Lake (December, April, August) - Moses Lake meets at the Grant County Fairgrounds Fuller Building.**

**Othello (October, February, June) - Othello meets at Time Out Pizza.**

**Grant-Adams 4-H Area Meetings-** Area Council meetings are determined by your area.

**Grant County 4-H/FFA Livestock Sale Committee** meets the **third Tuesday** of the Month, **February through November, 7:00 PM**, Moses Lake, Grant County Fairgrounds Fuller Building.

**Grant-Adams 4-H Horse Leader Committee** meets the **second Thursday** of each month, **7:00 PM**, Moses Lake, Grant County Fairgrounds Fuller Building.

**Note:** [Meeting Minutes are Online](#)

### General Due Dates for Grant-Adams 4-H

- October 1 [Volunteer Hours for the Current Year](#) are Due
- October 31 [4-H Club Annual End of Year Financial Reporting Forms](#) are Due to the Extension Office. (4-H clubs that do not handle finances are still required to turn in a report that shows no funds are being handled.)
- December 1 [Annual 4-H Chartered Club Plan is Due](#)
- December 1 [Annual 4-H Family Group Plan is Due](#)
- December 31 Re enrollment Deadline for Returning 4-H Club Members – [Online Registration](#) - <https://www.4honline.com/>
- May 31` New Member Enrollment Deadline
- June 15 [Secretary Books](#) are Due to Extension Office
- July 15 [Youth for the Quality Care of Animals \(YQCA\)](#) Completion Deadline

### Annual Animal Ownership Dates for Grant County Fair

- January 1 [Dairy - Sale Springer & Bred Heifer Certificates](#) are Due
- April 1 [Horse Ownership Certificates](#) are Due
- April 1 [Market Steer Ownership Date](#) (Weigh & Tag Day TBA)
- May 1 [Non Sale Dairy Ownership Certificates](#) are Due
- May 8 Market Swine Ownership Date
- May 12 Llama Ownership Date
- June 15 Poultry Ownership Date
- June 15 Rabbit Ownership Date
- June 8 Market Goat Ownership Date (Weigh & Tag Day TBA)
- June 10 Market Sheep Ownership Date (Weigh & Tag Day TBA)

### Annual Animal Ownership Dates for Adams County Fair

- February 1 [Dairy - Sale Springer & Bred Heifer Certificates](#) are Due
- April 1 [Horse Ownership Certificates](#) are Due
- April 30 [Market Steer Ownership Date](#)
- May 1 [Non Sale Dairy Ownership Certificates](#) are Due
- July 15 Poultry Ownership Date
- July 15 Rabbit Ownership[ Date
- June 12 Llama Ownership Date
- June 15 Market Swine Ownership Date
- June 15 Market Sheep Ownership Date
- July 8 Market Goat Ownership Date

**Note:** If you have project animal issues (sickness, won't breed, or death,) please contact the Extension Office. Hardship cases will be considered to allow you to show at fair.

## Information for Volunteers and 4-H Club Volunteer Leaders

### New 4-H Year Annual Fall Kick Off Meeting

General club leaders, family 4-H group leaders, and volunteers assisting with 4-H finances are **required** to attend one of the annual Fall Kick-Off meetings. All leaders and prospective new leaders welcome! Kick Off meeting times are announced in the 4-H Friday Update each new 4-H year.

### 4-H Online Enrollment: Start of the New 4-H Enrollment Year is October 1

The 4-H year begins October 1 and ends September 30. Youth who have reached their 5th birthday before October 1 of the current 4-H year through youth who have not reached their 19th birthday before October 1 of the current 4-H year are eligible to enroll in a 4-H club. Enroll in 4-H using the [4HOnline system](https://www.4honline.com) (<https://www.4honline.com>). Please use Google Chrome or Firefox Web Browser for best results.

Grant County 4-H is able to offer financial hardship assistance scholarships on a case by case basis, some or all of the \$25 per member fee may be covered. [Membership Fee Scholarship Application](#).

### Report Your Volunteer Hours Each Month

Volunteer hours are due each year by October 1. If you are a volunteer leader, you need to log your volunteer hours at <https://volunteers.cahnrs.wsu.edu>. Your user name will be either your last name only or your first & last name with a space in between. The password is *password!* (don't forget the exclamation point). If you are unable to log in to the volunteer database, or if you have questions, please call the Extension office.

### "Put the Child First" WSU Child Protection Training Video

[Register for "Put the Child First"](#) - Fill in the requested information and press "Submit Request. You will receive an automatic **Email with log-in information** to view the presentation. Your registration for the training will be kept in the system as proof of your participation.

### 4-H 101 Leader Training Parts 1 and 2 for Club Leaders and Volunteers

Are you thinking about starting a new 4-H club or family 4-H group? Are you signing up as a volunteer with 4-H for the first time? Are you a returning volunteer and have not completed 4-H 101 Leader Training? If so, please contact Jeannie Kiehn, [jmkiehn@wsu.edu](mailto:jmkiehn@wsu.edu); 754-2011 ext. 4313.

**WSU 4-H Volunteer Application Forms:** [Fillable Word Version](#); [PDF Version](#). All volunteers signing up for the first time must submit application forms to the Extension Office.

New 4-H volunteers are required to complete the 4-H 101 Volunteer Leader Training Parts 1 & 2. This training (how to plan club programming, ensure you are up-to-date on WSU and state 4-H policies and procedures, risk management, etc.) will prepare you to become a certified 4-H volunteer of a 4-H club or group.

#### 4-H 101 Volunteer Leader Training Part 1 (Prerequisite for 4-H 101 Part 2):

- Completed WSU 4-H Volunteer Application on file at the Extension office.
- Complete the [Volunteer E-Learning Modules](#) online training course. The password is volunteer.
- Complete the online ["Put the Child First"](#) child protection training video.

#### 4-H 101 Volunteer Leader Training Part 2

- Trainings are held in Grant County and Adams County. Scheduled training dates are announced in the [4-H Friday Update](#) and an RSVP to the Extension Office is required.

### Preserve the Taste of Summer (Required Food Preservation Projects Leaders)

All 4-H project leaders leading food preservation projects and activities will need to have completed this online food preservation program training series to enroll as a food preservation project leader. [Details and Registration](#).

### Shooting Sports Training (Required for Shooting Sports Project Leadership)

Additional 4-H Shooting Sports Training for specific shooting sports disciplines is required for certified 4-H volunteers to lead 4-H Shooting Sports Projects. 4-H volunteers interested in leading shooting sports projects should contact Jeannie Kiehn at [jmkiehn@wsu.edu](mailto:jmkiehn@wsu.edu); 509-754-2011 ext. 4313. You will be notified when 4-H Shooting Sports Trainings are scheduled in WA or ID.

### 4-H Request to Fundraise Form

To be in compliance with 4-H policy, all fundraising activities need prior approval from the county 4-H Program Coordinator or 4-H Youth Development Regional Specialist. A [request to fundraiser form](#) is to be turned in to the Extension Office within 5 days prior to the fundraising activity of your club/group.

**HEART**  
relating, caring



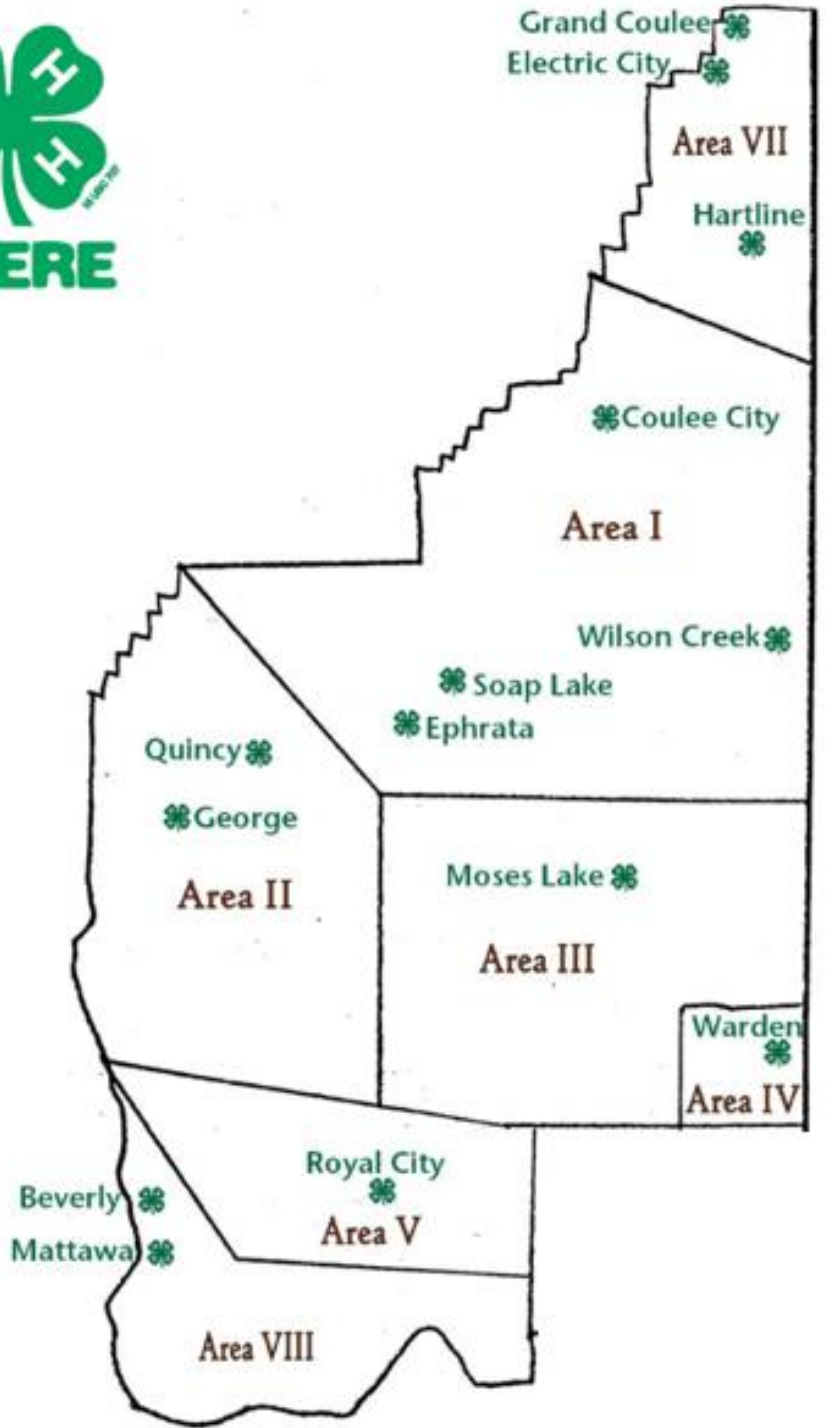
**HEAD**  
managing, thinking



**HEALTH**  
being, living



**HANDS**  
giving, working



WASHINGTON STATE UNIVERSITY  
EXTENSION