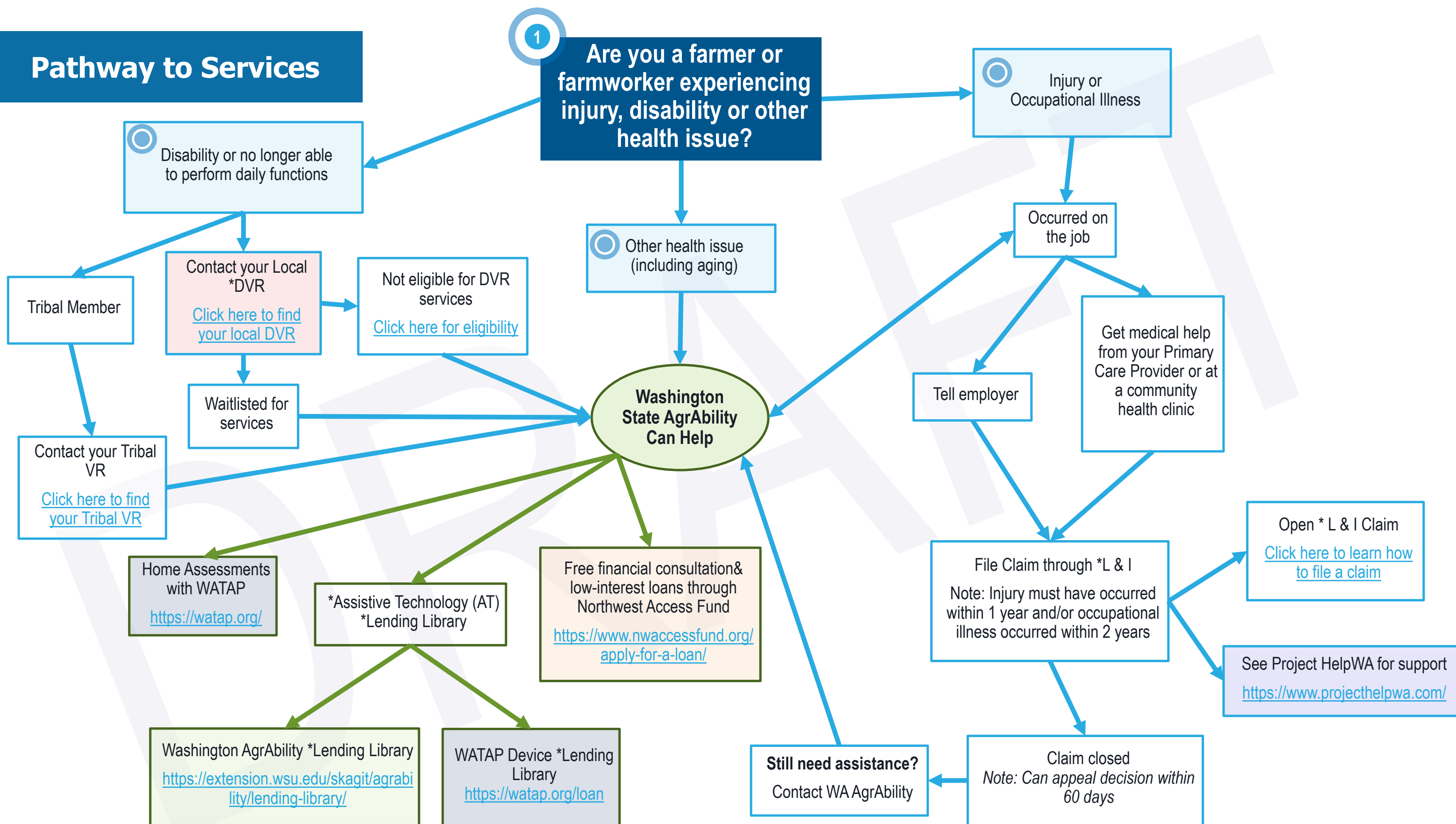


# Pathway to Services



## Services Explained

### DVR (Division of Vocation and Rehabilitation)

<https://www.dshs.wa.gov/dvr>

DVR offers services designed to help you prepare for, get and keep a job. The services available are based on individual needs and may include workshops, counseling, guidance, assessment services, benefit planning, independent living services, assistive technology services, training and education, and job-related services (modifications, accommodations and technology).

### WATAP (Washington Assistive Technology Act Program)

<https://watap.org/>

Washington Assistive Technology Act Program (WATAP) provides Washingtonians with disabilities AT Device Demonstrations, loans, and technical assistance.

Areas of device assistance may include vision, hearing, independent living, computer access, memory, learning, recreation, and smart home technology.

### Washington AgrAbility

<https://extension.wsu.edu/skagit/agrability/>

Washington AgrAbility offers consultation services and education to connect you and your family to resources which promote well-being in the workplace and reduce risk of secondary injury. Washington State AgrAbility Project does not purchase individual equipment; however, you will be connected with resources available.

### Northwest Access Fund

<https://www.nwaccessfund.org/assistive-technology/>

Northwest Access Fund provides Assistive Technology loans for Washington residents of all ages with disabilities of all types, including seniors with age-related functional limitations.

### Project HelpWA

<https://www.projecthelpwa.com/>

Project Help assists people throughout Washington state by providing assistance at any phase of the workers' compensation claim process. This includes self-insured and state fund claims; help is offered and open to all. Assistance is provided from the initial filing of a claim, to claim closure.

## Terms Explained

**\*L & I:** The Department of Labor and Industries (L&I).

**\*L & I Claims:** With an L & I claim, you may be eligible for a variety of benefits, including medical care, if it's directly related to your injury. In some cases, L & I may provide wage replacement, return-to-work help and disability or pensions for the severely injured. Learn more at <https://lni.wa.gov/claims/for-workers/injured-what-you-need-to-know/>

**\*Assistive Technology (AT):** Assistive Technology (AT) is defined as any item, piece of equipment, or product system, whether acquired commercially, modified, or customized, that is used to increase, maintain, or improve functional capabilities of individuals with limitations.

**\*Lending Library:** A Lending Library is available to the public and intended for individuals who would like to try a device before making a financial commitment. Borrow a device before you invest in a personal one, for short term accommodation if your device is being repaired, or while you're waiting for your newly purchased device to arrive.

If you have questions about this pathway to services graphic, please contact Kristen at 360-395-2365.