

Why Backyard Fruit Trees May Not Be for Everyone!



Integrated Pest Management (IPM) for home orchards The pros and cons to homeowners planting tree fruit in their backyards

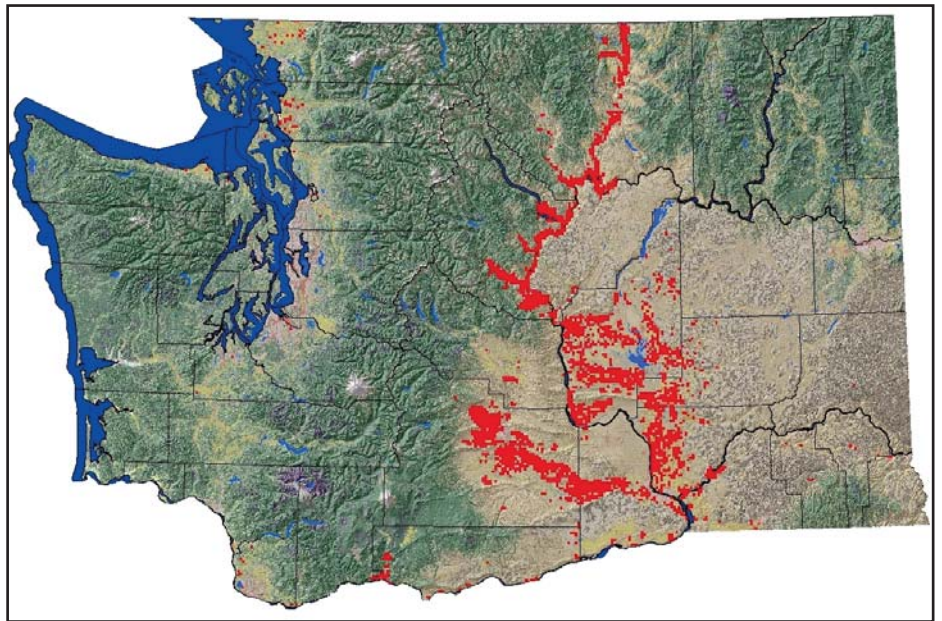
The Yakima Valley, Wenatchee Valley and Columbia Basin Regions of Washington State are considered the deciduous "tree fruit baskets" of the United States. Our dry weather, warm springs, hot summer days combined with cool autumn nights are ideal for the commercial production of the largest and best-tasting tree fruits in the nation. According to the USDA National Agricultural Statistics Service, Washington State is the leading producer of apples, pears, and sweet cherries in the USA. Washington is a leading producer of plums, prunes, peaches, nectarines, tart cherries and apricots. Tree fruit can be produced on the west side of the state as well, but precipitation patterns and plant disease management can make fruit production more of a challenge.

As a Washington resident, you might be tempted to grow your own fruit trees and capitalize on these weather conditions and you can! The objective of this website is to provide you with the information that you need to be your own fruit provider and enjoy the beauty of tree fruits at flower bloom and at fruit harvest.

Be forewarned, backyard fruit trees may not be for everyone, especially Washington residents who live in the major fruit producing areas. With all

the fruit trees in our area, the incidence of fruit pests is quite high and they will find your fruit trees.

producing areas, it is far easier and cheaper to drive to a local fruit stand or farmer's market than deal with wormy fruit or handle pesticides



Red areas reflect the distribution of tree fruit orchards in Washington State.

Homeowners who plant apples, pears or cherries will discover that they need to protect their fruit from the ravages of insects and this often necessitates pesticide use each and every year. If these insect pests are not controlled, they will infest nearly every fruit on the tree and they will spread from your tree to your neighbor's tree or a commercial orchard. For those of us lucky enough to live in these fruit-

every year.

CONTACT

WSU Extension Yakima County
104 North First St., Suite 204
Yakima, WA 98901
509-574-1600
bushm@wsu.edu

WSU Extension Benton County
5600 E West canal Drive
Kennewick, WA 99336
509-735-3551
marianneophardt@co.benton.wa.us