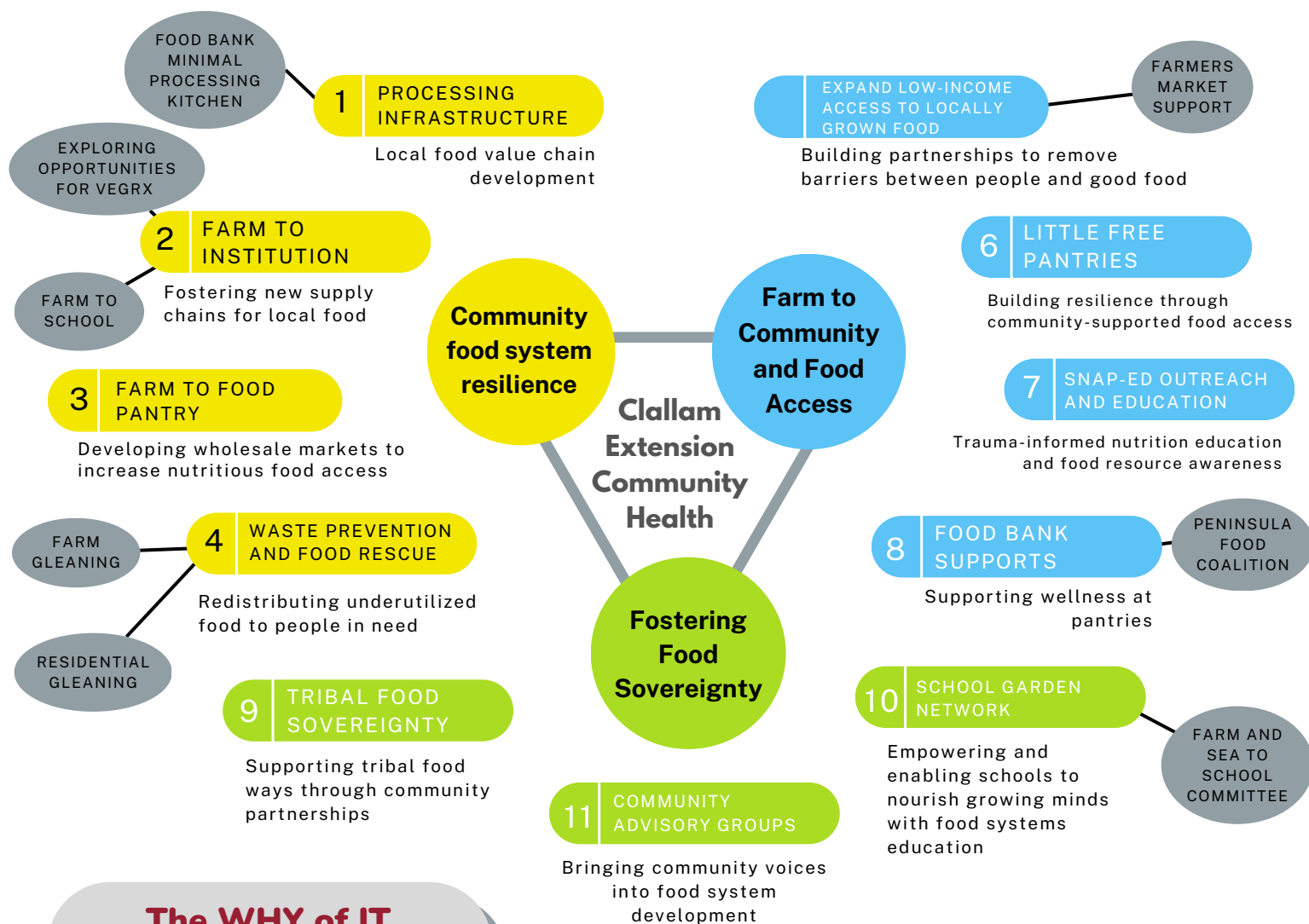


WSU Clallam Extension 2022 Impact Report

Community Health Program



The WHY of IT

Clallam County

Has the **2nd highest rate** of childhood food insecurity

Has the **4th highest overall rate** of food insecurity

in WA State

Our **WSU Clallam County Community Health program** recognizes that the causes of poverty, poor health and limited food access are systemic and often insurmountable. Through partnerships with community organizations and service providers such as schools, health care and food banks, we target the structures and systems that prevent people with limited resources from accessing nutritious, wholesome food. Our team and our partners work to remove the barriers people face when accessing fresh, nutritious food. We do this work in whole variety of ways with many different partners across Clallam County.



WSU EXTENSION
Clallam County

WSU Clallam Extension 2022 Impact Report

Supplemental Nutrition Assistance-Education (SNAP-Ed) Community Health Program

What is SNAP-Ed?

SNAP-Ed is a federal grant program supporting the health and food security of people who receive SNAP food assistance benefits (Supplemental Nutrition Assistance Program).

WSU Clallam County Extension is the subcontractor overseeing the SNAP-Ed programming in Clallam and Jefferson counties.

Through our programming we work to improve food access for low-income residents in Clallam County.

We are committed to solutions that decrease social and health disparities due to discrimination, poverty, or access to services that are created by racial, ethnic, income and urban/rural differences. Our activities include:

Nutrition Education

We provide classes, resources, cooking demos and more to residents of Clallam and Jefferson counties.

Gleaning

We coordinate a network of over 100 volunteers that glean orchards, gardens and commercial farms to deliver to food pantries across Clallam County.

Farm-to-Food Bank

We contract with small-scale farms across Clallam County to grow directly for the food banks since 2016.

Farm-and Sea-to-School

We provide staffing and support to coordinate a network of food pantries and hunger relief organizations

Team Members

Danielle Carson, Program Manager

Sallie Constant, Farm to Food Pantry Coordinator

Amelia DePue, Farm to School Coordinator

Sharah Truett, Gleaning Coordinator

Vicki Wegener, SNAP-Ed Assistant, Clallam

Benji Astrachan, SNAP-Ed Assistant, Clallam

Dana Salado, SNAP-Ed Assistant, Jefferson



***Our work makes
healthy food more
accessible to all
Clallam County
residents!***



WSU EXTENSION
Clallam County

WSU Clallam Extension 2022 Impact Report

SNAP-Ed Education and Outreach

Community Health Program



Benji Astrachan attends school district events to teach about gardening and food access.



Betsy Wharton and Shaelee Evans teach about food preservation at Peninsula College

Education is a major component of the SNAP-Ed program. SNAP recipients have access to free educational materials and opportunities to learn healthy recipes, grocery shopping on a budget, meal planning strategies and the importance of choosing fruits, vegetables, and whole foods for the health of themselves and their families. SNAP-Ed supports cooking and nutrition demonstrations as well.

- Our Community Health team delivered 16 hours worth of trauma-informed nutrition classes to nearly 40 youth from low-income families through partnerships with First Step Family Support Center and YMCA.
- In Partnership with Sequim, Port Angeles and Jefferson County Farmers Markets, our WSU SNAP-Ed team provided nearly \$1,000 in \$5 vouchers to over 140 community members who filled out a survey to give feedback on their experiences with using farmers markets as a food resource.
- Our Community Health Coordinator has distributed recipes, cookbooks, and provided one-on-one healthy eating guidance to Port Angeles Food Bank customers, of which there are over 300 families weekly.
- WSU Extension's food preservation program offered guidance and resources on food safety and preservation for Peninsula College's Community Education program.

Community Health & Food Access
Program Lead, Danielle Carson
danielle.carson@wsu.edu



WSU EXTENSION
Clallam County

WSU Clallam Extension 2022 Impact Report

Farm to Community

Community Health Program

Little Free Pantries

Our Community Health team has worked with Compassion Clallam to lead the expansion of the Little Free Pantry Program from 1 pantry in downtown Port Angeles to now **22 active pantries** across Port Angeles, Sequim, Beaver, Forks and the Hoh Nation. LFPs are stocked with a wide variety of fresh and shelf-stable foods by hosts, community members, & food banks and operate on "Take What You Need, Leave What You Can" model, open 24/7 to everyone.



Benji, Tawnya Rowley (Mariposa House) and superstar volunteer carpenter Michael Clemens show off a newly installed and stocked Little Free Pantry in Forks

Farm and Sea To School

Our Community Health staff sit on PASD wellness committees and organize farm to school groups to support school gardens, healthy eating and place-based education initiatives. Our team

- Delivered over **2,000 locally gleaned apples** to schools across the Port Angeles School District for Taste WA Day.
- **Secured nearly \$3000 of donations** of garden seeds and supplies for school gardens.



Crescent School Planning Day Board

SNAP-Ed Program Assistant
Benji Astrachan
benji.astrachan@wsu.edu



WSU EXTENSION
Clallam County

WSU Clallam Extension 2022 Impact Report

Gleaning

Community Health Program

Increasing food access + reducing food waste in 2022



Gleaners harvesting bok choy at River Run Farm

Gleaning from local farms

- Over 9000 lbs of produce gleaned from farms.
- 17 types of crops harvested in 2022.
- 58 volunteers on our farm glean listserv.
- Food donated to Food Banks, all Little Free Pantries, Sequim YMCA, Boys and Girls Clubs, Serenity House Shelter, TAFY Shelter, Salvation Army, Food Not Bombs, Peninsula Behavioral Health, Lower Elwha Food Bank, Jamestown S'Klallam Food Bank, Makah Food Bank, Forks Food Bank, PA Senior Center, Schools, PA First Step Family Center.

Residential Gleaning

- Over 2500 pounds of tree fruit and berries gleaned despite a poor year for fruit production across the county.
- Gleaning program launched an improved website for organizing gleans.
- 400+ subscribers to our Gleaning Newsletter received semi-weekly updates and information.



Gleaners at work harvesting berries

Gleaning Coordinator
Sarah Truett
sarah.truett@wsu.edu



WSU EXTENSION
Clallam County

WSU Clallam Extension 2022 Impact Report

Farm to Food Pantry

Community Health Program

Expanding Fresh Food Access IS Economic Development

Farm to Food Pantry Program

- In 2022 our Farm to Food Pantry (F2FP) Program contracted with **seven food pantries** and **thirteen producers** in Clallam County.
- \$12,500 in contracts were distributed and repaid in fresh and locally grown foods.
- Contracting rules became more flexible in 2022 and F2FP coordinators were able to contract for much-needed items such as fish, meat, eggs and dairy for the first time.

The Farm-to-Food Bank program serves as an incubator for micro-scale farms to explore wholesale contracting with little to no risk for beginning farmers.



Sequim Food Bank Director Andra Smith contracts with local farmer Scott Chichester of Chi's Farm

Farm to Food Pantry Coordinator

- In Summer of 2022, funding for F2FP increased tenfold with an award from the WSDA Resiliency Grant, which will allow our F2FP program to organize pre-season contracts with farmers for the 2023 growing season.
- In Summer of 2022, Clallam Extension hired a local farmer Sallie Constant as our Farm to Food Pantry Coordinator. Our F2FP will assist food pantries with increasing their contracting with local farms and developing wholesale contracts with both new and current F2FP farmers and fishers, as seen here.



Left to right: Lisa Bridge WSU Communications, Fisherwoman Kat Murphy & Farm to Food Bank Coordinator, Sallie Constant

Farm to Food Bank Coordinator

Sallie Constant

sallie.constant@wsu.edu



WSU EXTENSION
Clallam County