



Brochure layout and design: Daria Lacy



WSU Representative – Carrie Backman
 Carrie.Backman@wsu.edu
<http://wahkiakum.wsu.edu>



Wahkiakum Food and Farm Network



If you are a farmer or supporter of Wahkiakum small farms and would like to connect with our Wahkiakum Food & Farm Network group, please ask to join our Wahkiakum Food and Farm Network group page on Facebook or contact any of the members listed in this brochure.



The Wahkiakum Food & Farm Network is dedicated to encouraging awareness and purchase of Wahkiakum grown and made farm products and to developing relationships among Wahkiakum County farms, value added producers and the local community.

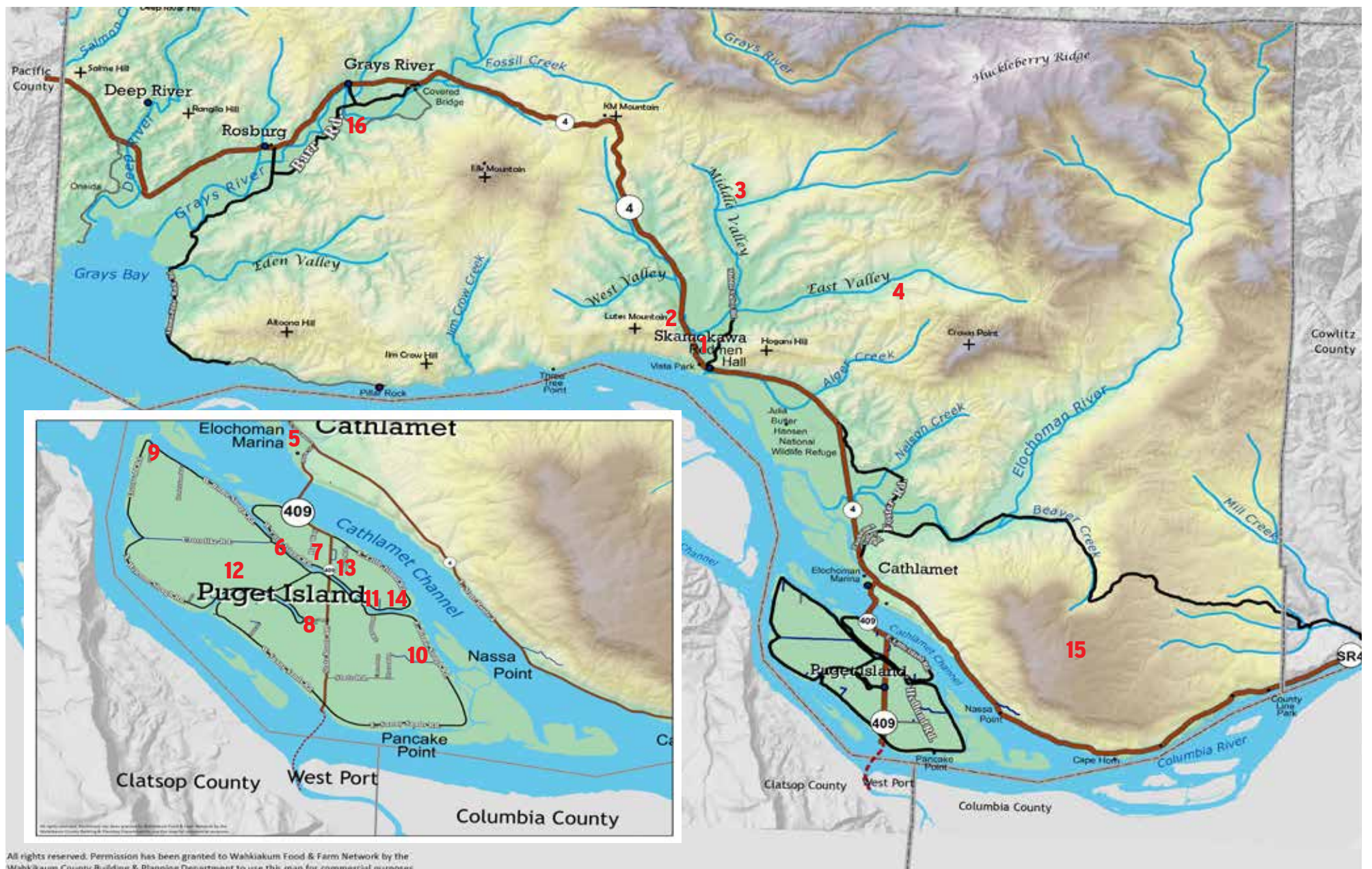
Wahkiakum Food and Farm Network

Wahkiakum Grown and Made Farm Products:

- Fresh Vegetables and Herbs
- Cut Flowers
- Orchard Fruits and Berries
- Dairy Products including Milk, Butter and Cheeses
- Processed Jams, Jellies, Pickles and Fermented Foods
- Breads and Pastries
- Handmade Soaps
- Grass Fed Beef and Lamb
- Pork
- Pastured Poultry and Eggs
- Fresh, Frozen and Smoked Fish
- Hay
- Christmas Trees

Seasonal Availability* of Local Wahkiakum Grown Farm Products													
PRODUCT	JAN	FEB	MAR	APR	MAY	JUN	JUL	AUG	SEP	OCT	NOV	DEC	
Vegetables/Produce:													
Beans													
Cole Crops – Cabbage, Broccoli, Cauliflower, Brussel Sprouts													
Corn													
Leafy Greens – Kale, Collards, Swiss Chard, Bok Choy, etc.													
Lettuces – Romaine, Butter, Leaf, Head, etc.													
Potatoes													
Root Crops – Carrots, Radishes, Turnips, Rutabaga, Celeriac, Onions, Parsnips, Beets, etc.													
Summer Squash – Zucchini, Yellow, Patty Pan, etc.													
Tomatoes, Eggplant, Cucumbers & Peppers													
Winter Squash – Acorn, Butternut, Delicata, Pumpkins, etc.													
Herbs													
Cut Flowers													
Berries:													
Blackberries													
Blueberries													
Raspberries, Marionberries													
Strawberries													
Fruit:													
Apples													
Asian Pears, Pears													
Apricots, Cherries													
Peaches, Nectarines, Plums													
Nuts – Walnuts, Filberts, etc.													
Eggs													
Processed Poultry													
Grass Fed Beef, Lamb and Pork													
Christmas Trees													

*Note: This chart is intended as a guide. Some farmers may have products outside of these windows. Please call the farm for actual availability.



Skamokawa

1. Twin Gables Inn

“On the Lower Columbia Water Trail”
Stevan and Kathleen Morgain
1416 W. State Route 4, Skamokawa, WA 98647
(360)-795-3942
www.twingables.net, twin.gables@yahoo.com
Seasonal local foods, home made breads and pies for sale to the public. Private dock in Skamokawa. Book online at twingables.net

2. Skamokawa Farmstead Creamery

Vicki Allenback
1681 W. State Route 4, Skamokawa, WA 98647
360-795-8700
Email: vicki@skcreamery.com
www.skcreamery.com, Facebook: Skamokawa Farmstead Creamery. Fresh chevre, aged chevre, aged cheese, feta and goat cheese cajeta (goat milk caramel). All made on our farm from our goat's milk. Farm tours & cheese tasting, cheese making classes.

3. The Inn At Crippen Creek Farm

Kitty and Don Speranza
15 Oatfield Road, Skamokawa, WA 98647
www.crippencreek.com
theinn@rippencreek.com
360-795-0585
Spend a weekend at our secluded **country inn** where you can enjoy warm hospitality, **gourmet meals**, and beautiful accommodations. Take one of our cooking classes and learn how to bake artisan breads or how to cook like an Italian nonna. We produce pastured pork, grass-fed beef, organic chickens and eggs from free-ranging hens. **New** this year is our **Roadhouse**, a self-catering vacation rental that welcomes your children and pets.

4. Seven Springs Ranch

Ed Stornetta
860 East Valley Road, Skamokawa, WA 98647
360-795-3809
U-Cut or We-Cut Noble & Grand Fir Christmas Trees. Come anytime of the year to choose and hold your tree. Open for cutting over the holidays.

Cathlamet

5. Elochoman Marina Farmers Market

Mackenzie Jones
500 2nd Street, Cathlamet, WA 98612
360-849-9401
Email: Port1j@cni.net
www.cathlametmarina.org
Facebook - Elochoman Slough Marina
Friday's 3-6pm May 25th- August 31st
Local produce, Food Vendors and Music. Beautiful views. Bring Along Friends and Family!

6. Little Barn Farm

Patrick & Hollie McKay-Beach
139 W. Birnie Slough Road, Cathlamet, WA 98612
360-560-1150
Email: littlebarnfarm@hotmail.com
Facebook - Little Barn Farm
Grass fed, grass finished lambs and beef sold by the cut by appointment or at the local farmers market (May to October). Beef by the whole, half or quarter. Whole or half lambs also offered. Call or email to check availability.

7. Black Sheep Farm

Siobhan & Geoff
378 State Route 409, Cathlamet, WA 98612
Email: blacksheepfarm@riseup.net
www.theblacksheepfarm.com
Instagram - @blacksheepfarm
We focus on growing hyper seasonal produce with an emphasis on unique vegetable and herb varieties for select restaurants. We also raise a small flock of Icelandic sheep for wool. Depending on time of year, we have all natural fleece and lopi yarn available.

8. Backman's Farm and Fish

Mike and Carrie Backman
PO Box 799, Cathlamet, WA 98612
backmansfish@gmail.com (360) 431-4421

9. Island's End Farm & Farmstay

Vacation Apartment
Carol Carver & George Exum
541 W. Birnie Slough Road, Cathlamet, WA 98612
360-849-4324
Email: islandsendfarm@gmail.com
www.islandsendfarm.com
See apartment pictures and book online at AirBNB. Order year-round fresh sauerkraut, several varieties of kim chi, or jams/jellies by emailing order and picking up at our farm, the farmer's market, or Little Island Creamery.

10. Backwater Farm

Bruce & Desiree Craven
320 E. Birnie Slough Road, Cathlamet, WA 98612
503-358-8372
Email: bruce@backwaterfarm.com
www.backwaterfarm.com
Facebook - Backwater Farm
Visit Backwater's Really-Small-Farm-Store for farm direct meadow raised poultry, eggs, wildflower honey, home-made jams and jellies, fresh produce, lovely lavender, herbs, and heritage breed black angus beef. Grass fed and grass finished to produce excellent marbling, outstanding tenderness and rich beefy flavor. Available by the 1/4, 1/2 or whole beef.

11. Wees Honey Bee Farm

Bill Holmes
373 E Little Island Rd, Cathlamet, WA
Message at 360-849-4103
Weeshoneybeefarm@gmail.com
Pure Local Real Honey

12. Blue Skies Farm

Mark, Dan and Brian
31 Blue Skies Lane, Cathlamet, WA 98612
(503) 887-2315
Blueskiesfarmpi.com - mark@blueskiesfarmpi.com
We feature specialty food products - such as pickled broccoli, cauliflower, and patty pan squash, tomato and spaghetti squash jams, and pot roast simmer - hand crafted in small batches from produce raised organically on our farm. Seasonally, we also feature fresh produce and honey.

13. Little Island Creamery

Dick McDonald & Kyleen Austin
448 E. Little Island Road, Cathlamet, WA 98612
360-849-9456
Email: littleislandcreamery@icloud.com
www.littleislandcreamery.net
Facebook - Little Island Creamery
Our cows and goats are raised on lush island grasses following old-world practices. Raw cow and goat milk, cultured hand-crafted butter, cream, and blended artisan cheeses made from the milk produced by our cows and goats. Milk sold directly from our farm. Eggs from pastured hens.

14. Little Island Farm and Flowers

Mike & Kim Howell
316 E. Little Island Road, Cathlamet, WA 98612
360-431-5133
Email: littleislandflowers@gmail.com
www.littleislandfarm.com
Facebook - Little Island Farm and Flowers
Instagram - @littleislandflowers
We specialize in growing specialty cut flowers for the wholesale and retail market. On farm floral design services and seasonal flower subscriptions (CSA) available. Naturally grown fruits and berries. We also can host your special event in our outdoor Event Venue.

15. Tall Timbers Forest Farm & Fiber

Lori and Rick Cagle
85 Hodgson Road, Cathlamet WA 98612
360-751-5120
Email: talltimbersfff@gmail.com
Facebook- Tall Timbers Farm
Icelandic & Gotland Sheep; Pastured Heritage Chickens & Turkeys; Native Berries; Heirloom Vegetables; and Fresh Herbs. CSA Memberships Available

Grays River

16. Glory B Farms

Tom and April Zimmerman
434 Covered Bridge Road, Grays River, WA 98621
360-465-2186 Website: glorybfarmscsa.com
Retail business email: glorybfarmscsa@gmail.com
Wholesale business email: glorybfarms@wwest.net
10 acres WSDA Certified Organically Grown. Variety of vegetables, herbs, strawberries and raspberries. Retail via farmers markets and CSA (produce subscription).