

## WSU Extension Grays Harbor County 4-H Youth Development News for June 2023

Archived versions of the News Blast are available at <http://extension.wsu.edu/graysharbor/4-h/info/>

**IMPORTANT DATES** More events and info on Facebook at <https://www.facebook.com/graysharbor4h/>

- **June 5:** GH 4-H Horse Council Meeting, 6:30 pm via Zoom or the WSU Extension office
- **June 14:** GH 4-H Horse Council PreFair Horse Show & Clinic Early Registrations Due
- **June 15:** GH 4-H Council Meeting, 6 pm via Zoom or at the WSU Extension office, Elma
- **June 19:** WSU Extension Office Closed in observance of Juneteenth
- **June 21:** GHC Fair Board hosts Fair Volunteer Meeting, 6 pm GHC Fairgrounds Pavilion
- **June 26:** 4-H Fair Committee Meeting 6 pm via Zoom or at the WSU Extension office, Elma
- **June 28:** 4-H Camp Committee Meeting, 6 pm via Zoom
- **July 4:** WSU Extension Office Closed in observance of Independence Day
- **July 8-13:** 4-H Camp at Panhandle Lake Camp
- **July 10:** GH 4-H Horse Council Meeting, 6:30 pm via Zoom or the WSU Extension office
- **July 20:** GH 4-H Council Meeting, 6 pm via Zoom or at the WSU Extension office, Elma



### 4-H COUNCIL MEETINGS – Join Us Digitally or In Person

We would love to have you join us for the next 4-H Horse Council meeting at 6:30 pm on Monday, June 5 and July 10. Join us at the next 4-H Council meeting at 6 pm on Thursday, June 15<sup>th</sup> and July 20<sup>th</sup>. We hope that you will add attendance at 4-H Council meetings to your plans.

The meetings are the best way to share your ideas, get up to the minute information and help shape the direction of YOUR 4-H program. The meetings will be held in person with the option to join remotely, and you can join us via Zoom or with a phone call if you have a Zoom account by clicking the relevant link at <https://www.facebook.com/graysharbor4h/>. Connect with Tracie to test the system in advance.



### POULTRY AT THE GHC FAIR

The GHC Fair staff let us know that as of this moment, based on the latest information from the State Veterinarian, the GHC Fair Veterinarian does not have a problem with birds attending the 2023 Fair. This is so long as there are no cases reported in “backyard flocks” within our area, prior to the start of the fair. The GHC Fair Veterinarian will also be screening birds carefully during vet check.

The GHC Fair Veterinarian states, “It is extremely important that we follow good biosecurity measures, and that the public is not allowed contact with the birds. Additionally, I will be turning away

*any sick or suspicious birds at check in; this will include all birds from that family/premise. Please let the kids know that if any of their birds appear sick, do not bring any bird from their flock. It is not worth the risk to try to sneak in a potentially ill bird.”* Biosecurity information is available at <https://agr.wa.gov/birdflu>

In any event, there will be a variety of ways that 4-H members enrolled in the poultry project can participate and showcase their knowledge and poultry project by signing up for other special poultry classes such as cage decorating, poultry equipment, educational posters, judging contests, and more!



## 4-H SUMMER CAMP REGISTRATION IS OPEN!

Spaces still available for Junior & Intermediate age groups!

Camp registration is online through your 4-H profile at

<https://v2.4honline.com>

Dates: July 8-13, 2023

Location: Panhandle Lake 4-H Camp

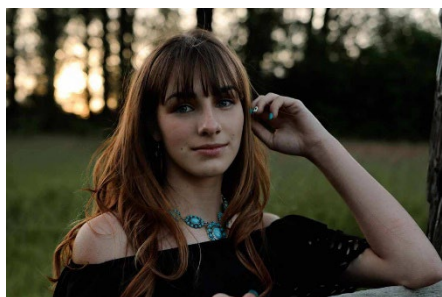
Cost: \$225 per camper (Junior & Intermediate age groups)

For more information check out our camping website:

<https://extension.wsu.edu/graysharbor/4-h/camping/> and

<https://extension.wsu.edu/mason/4-h-youth-families/4-h-camping/>

## GRAYS HARBOR 4-H SCHOLARSHIPS – Congratulations!



The Grays Harbor County 4-H Council is pleased to recognize scholarship recipients, Brianna Aversa and Emma Spalding who have been awarded scholarships in 2023!

More information about recipients will be available soon.



## WA STATE 4-H VIRTUAL PHOTO CLUB CONTEST! – Entries due June 11

4-H Members - You are Invited! ENTRIES and RULES:

- \* Send entries via email to [pwatson@wsu.edu](mailto:pwatson@wsu.edu) by MIDNIGHT on SUNDAY, JUNE 11.
- \* You MUST put "VIRTUAL PHOTO CONTEST" in the subject line.
- \* All entries will receive feedback by the week following July 4th.
- \* Cloverbuds will receive a certificate of participation.
- \* The members submitting the top Junior, Intermediate, and Senior photos will receive a gift certificate toward an arts & craft supply store.

\* Show different things that you have learned through live or recorded viewing of virtual photo club. You can find the links to the recordings (5 sessions) in previous issues of the WA 4-H Tues. News and on our Explore 4-H with WSU Extension Facebook page.

\* The review team will do their best to publish the photos and placings in the WA 4-H Tuesday News and on the Explore 4-H with WSU Extension Facebook page.

### RULES:

- \* 3 entries maximum per youth
- \* You must title or caption each of your entries (please name each photo file entry with the title/caption that you use so we can match them up) and answer the following questions for each entry:
- \* Type/format and name of camera used (if it was a phone or tablet or camera let us know that and the name of the device)?
- \* What technique(s) are you showing or demonstrating with this photo?
- \* What did you do to arrive at your final photo (crop, lighten, darken, in camera or using a computer, etc.)?
- \* What was your F-stop/aperture (this info should be recorded in your meta-data)?
- \* What was your shutter speed? (this info should be recorded in your meta-data)?

## GH 4-H HORSE COUNCIL HOSTS PREFAIR CLINIC & HORSE SHOW – Early Registration Due June 14



The Grays Harbor 4-H Horse Council invites enrolled 4-H members in the horse project (8 years old and above) to participate in the second of two clinic opportunities needed for 4-H members to exhibit their horse project at the Grays Harbor County Fair this year.

- Saturday, June 24 - Performance classes
- Sunday, June 25 - Gaming classes

Registration will be available soon online at

<https://forms.office.com/r/e9Wq0VanKK>

Registration forms to print will be available soon at

<https://extension.wsu.edu/graysharbor/2023/02/horse-shows-hosted-by-gh-4-h-horse-council/> and are also available at the WSU Extension office in Elma. Early registration fees are available until June 14

## TABLE SETTING WORKSHOP SERIES – June 21 through July 6 - RSVP by June 14



Learn how to set a table, plan a themed table setting, and create a menu for a county or state fair 4-H Table Setting display. Participants can attend the overview workshop as a stand-alone or attend the whole series to create elements for their table setting. All sessions will be held at the WSU Extension office in Elma (34 Elma-McCleary Road). RSVPs are appreciated by Wednesday, June 14 at <https://forms.office.com/r/mCxR97KLyy> or call (360)482-2934

Session 1: Table Setting Overview (Wed., 6/21, 6:30 - 8 pm)

Session 2: Centerpiece Part 1: Papier Mache (Mon, 6/26, 6:30-8 pm)

Session 3: Centerpiece Part 2: Painting (Thurs, 6/29, 6:30-8pm)

Session 4: The Menu (Thursday, JULY 6, 6:30 - 7:30 pm)

The 4-H Table Setting Activity involves youth members planning a coordinated, economical table setting and menu around a specific theme and culture, while taking into consideration the menu's nutritional value as a part of total day's food. The 4-H member will provide their own placemat, centerpiece, dishes, utensils, glassware, and linens. For more information on the 4-H Table Setting Activity, visit <https://pubs.extension.wsu.edu/> and search for C1075e, C1076e, and EM3443e.



## WA STATE 4-H EQUINE SCIENCE & HORSEMANSHIP SERIES June 22 & July 20

All are invited to attend to learn more about horses! Sessions will incorporate hands-on opportunities and fun learning games!

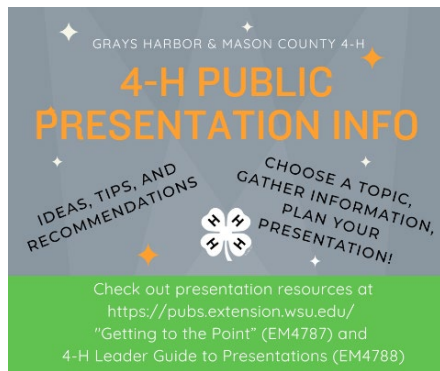
Use this link to sign up and receive the zoom link:

<https://bit.ly/WA4-HEquineScience>

Registered participants will be emailed a suggested supply list prior to each session for the hands-on component.

Hosted virtually on the 4th Thursday of the month, December 2022 – December 2023 (\*5th Thursday in November 2023, due to Thanksgiving) from 6:30 – 7:30 pm.





## GETTING READY TO PRESENT - PUBLIC PRESENTATIONS

Learning how to communicate your thoughts and ideas to others is an important life skill and helpful as you prepare your 4-H Public Presentation. "Getting to the Point" is a publication full of ideas, recommendations and tips for shaping your effective, organized, and successful presentation. Leaders may also want to review the 4-H Leader Guide, which defines the 4-H leader's role in presentations and has suggestions for how leaders can provide guidance for youth – from the beginner to seasoned presenters. So...choose a subject, gather information, work out a plan, practice, and get ready to deliver a

memorable presentation! "Getting to the Point" (WSU Publication EM4787) and 4-H Leader Guide (WSU Publication EM4788) are available at <https://pubs.extension.wsu.edu/>

## GH 4-H FAIR ENTRY INFORMATION – Red, White & Moo!



We are looking forward to seeing what 4-H clubs and members have been doing this year and are excited to use the FairEntry online registration platform again this year. Now that members have raised/trained animals, taken photos, made cookies/posters/creative arts, grew plants, built robots, gave presentations, hosted community service events, and more, it is time to explore the 4-H Exhibitor Guide, which describes opportunities and entry details.

The guide is available, along with a video and step-by-step guide, at <https://extension.wsu.edu/graysharbor/4-h/links/>

The FairEntry platform will be available soon for submitting entry information

at <https://www.fairentry.com/Fair/SignIn/18760> using the same email address and password as 4-H Online.

## 4-H STATE LIVESTOCK JUDGING CONTEST – Registration Due June 9



Make plans to attend the 2023 Washington 4-H State Livestock Judging Contest, scheduled for Saturday, June 24, 2023 from 8am to 5pm at the Ardell Pavilion on the Grant County Fairgrounds in Moses Lake, Washington.

More details available at <https://extension.wsu.edu/4h/news/> including contest rules and guidelines, as well as registration forms

Paul S. Kuber, Ph.D., Associate Professor, State 4-H Agri-Science Specialist, Washington State University Extension

*4-H teaches life skills that lead young people to become self-directing, positive, contributing members of our society. Extension programs are available to all without discrimination. Evidence of noncompliance may be reported through your local Extension office. Persons with disabilities who require alternative means for communication or program information or reasonable accommodation need to contact Tracie Hanson at PO Box 3018, Elma, WA 98541, (360)482-2934, [tracie.hanson@wsu.edu](mailto:tracie.hanson@wsu.edu) at least two weeks prior to the event. Our county is partnering with neighboring counties—the Constellation group of Mason, Pacific, Lewis, Thurston, etc., to send out e-newsletters. Some articles are from other counties, and include helpful information or invitations to participate in local, regional, or statewide events. Please read carefully. "These notices are provided for informational purposes only, and do not imply any endorsement of a particular brand or product."*

*Disclaimer: By posting the above "free to a good home" information, WSU Grays Harbor County Extension 4-H does not endorse or give approval for any of these free animals to be used as 4-H project animals. Contact the animal owners at your own risk.*

*Cooperating agencies: Washington State University, U.S. Department of Agriculture, and Grays Harbor County Extension.*

*Archived copies of "Grays Harbor County 4-H News" are available at: <http://extension.wsu.edu/graysharbor/4-h/info/>*