

GARDENING FOR EVERYONE





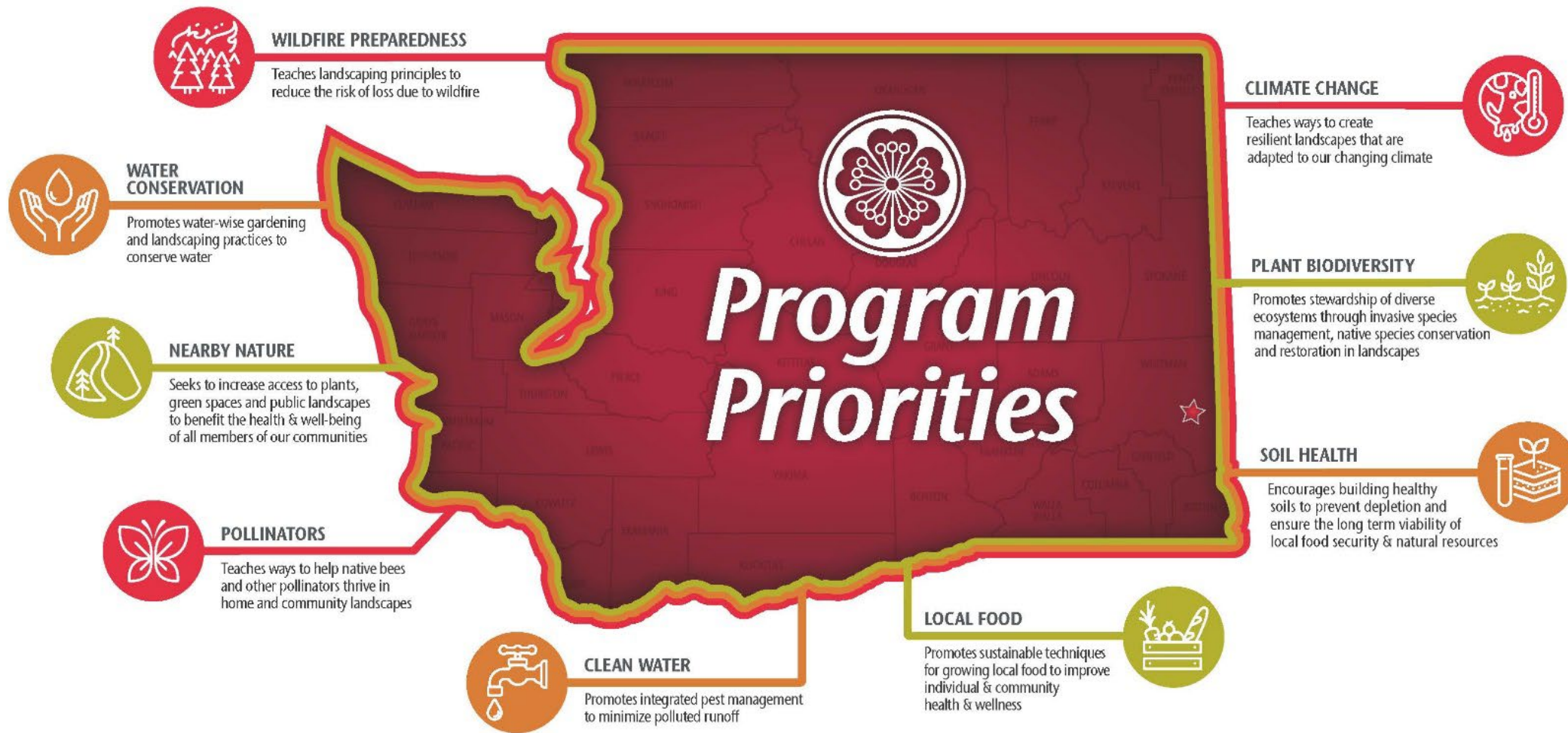
SMALL SPACE, SMALL BUDGET, NO PROBLEM

MaryAnn Albenesius
WSU Lewis County
Master Gardener



WSU Master Gardener Program

Cultivating Plants, People & Communities Since 1973



Master Gardener Program

WASHINGTON STATE UNIVERSITY
EXTENSION

Become a volunteer [mastergardener.wsu.edu](https://www.wsu.edu/mastergardener)



FRONT YARD:

SMALL SPACE

4 X 20 STRIP OF GRASS

4 X 18 STRIP OF DIRT

**MISSING A CHUNK FOR A
POWER BOX**

30" CEMENT SIDEWALK

VERY STRICT HOA



**THIS WAS THE STARTING
POINT**

**A 36 X 9 CONCRETE
PATIO
SURROUNDED BY 4" DEEP
LAYER OF RIVER ROCK
OVER A LAYER OF BARK
OVER LANDSCAPE FABRIC**



IT DID HAVE A
NICE, SMALL
COVERED
PATIO – ALSO
CONCRETE





BASIC PRINCIPLES OF GOOD DESIGN ALWAYS APPLY – NO MATTER THE SIZE OF THE GARDEN

Enclosure

Frame the view

Focal point

Color

Abundance

Mystery

Shape & form

Defined entry point

Structure

Texture, Pattern &
Rhythm

Whimsy

Time



ENTRY

Don't forget:

Every garden has an entry point, it's your 1st impression

Make it special





Abundance -
Rhythm & pattern

**CURVED EDGES CREATE A SOFTNESS IN THE
LANDSCAPE & MAKES MOWING EASIER**

ESTABLISH A FOCAL POINT

It can be whatever you want – a fountain a small structure, a storage shed but it needs to fit the space



CREATE A COHERENT GARDEN DESIGN

- ▶ *Accent colors*
- ▶ *Establish a theme*
- ▶ *Furniture*

Hardscape
Plant choices
Fencing/Privacy





Tutuer

**Italianate
garden**



Log bench

**RHYTHM IS THE
REPEATING OF
SHAPES OR
COLORS TO
CREATE
COHESION**

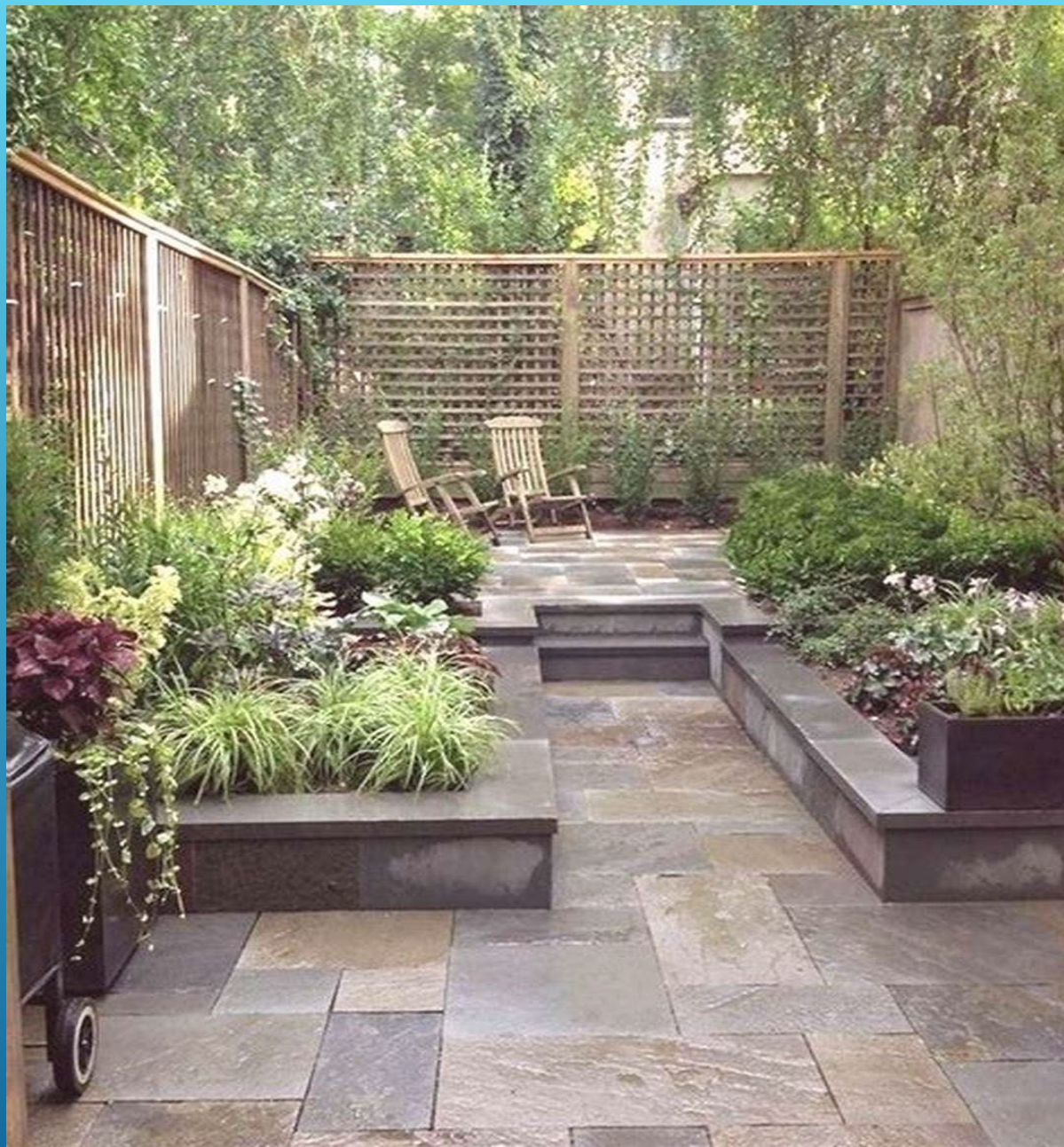
Defined entry





**THIS GARDEN HAS
REPEATED FORM
(SHAPE) AND
REPEATED PLANTS**

**CHANGING
THE LEVELS
IN YOUR
GARDEN
ADDS
INTEREST**



MULTIPLE LEVELS ADDS INTEREST

*YOU HAVE TO WORK WITH
WHAT YOU HAVE . . .*





FORM FOLLOWS FUNCTION –

*BEFORE YOU BEGIN . . .
DECIDE WHERE YOU ARE
GOING*

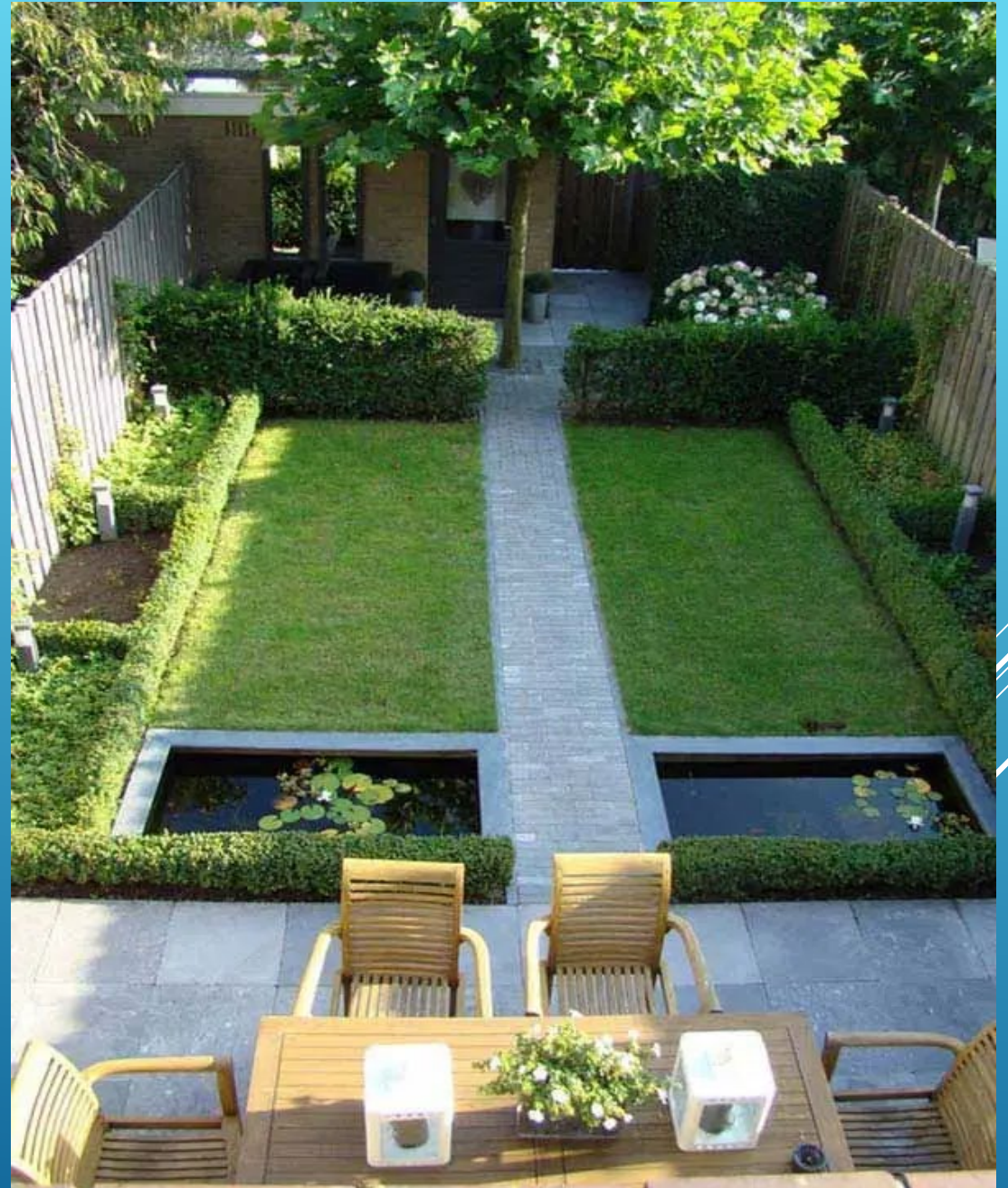


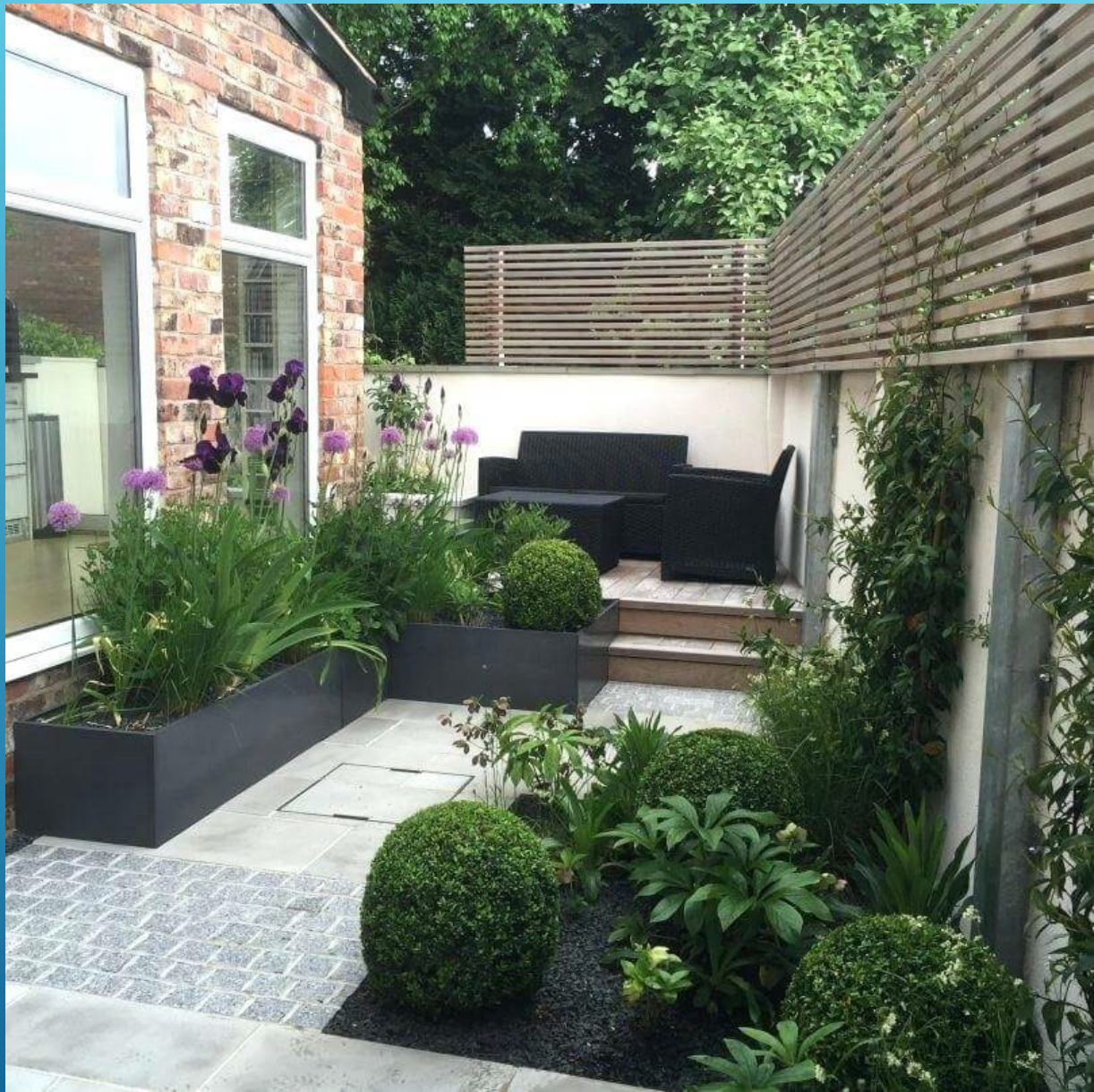
**BUILDING A DECK CREATES A
GATHERING SPACE**



**THIS GARDEN IS CLEARLY DESIGNED
AROUND THE PLANTS**

**RATHER THAN WORK,
THIS GARDEN SAYS –
ENTERTAINMENT SPACE**





**SHARPLY DEFINED
SPACES &
STRONG COLORS
MAKE FOR A
MODERN SPACE**



A SMALL COZY DINING PLACE





**WELL LAID OUT
SPACE
CREATES CALM**

MONOCHROMATIC COLOR SCHEMES ARE COHESIVE & SOOTHING



**COLOR
CAN BE
YOUR
BEST
FRIEND**



**SOOTHING
COLORS**

**LOW
MAINTENANCE
PLANTS**





Enclosure

There is no cohesion
A mix of hardscape – 3
different types

Very little that allows your
eye to rest

Nothing soft

No focal point that draws
your eye –

No privacy

**MINIMALIST?
OR, NAKED/UNFINISHED?**



**A SMALL SPACE NEEDS A
PLAN . . . IT'S EVEN MORE
IMPORTANT**

***THERE ISN'T
ANYPLACE TO HIDE
YOUR MISTAKES – OR
YOUR MESS!!!***



www.shutterstock.com · 1038702958

**EVERYTHING SHOWS IN A SMALL
GARDEN
IT HAS TO BE NEAT**





**A SMALL SPACE REQUIRES MORE THOUGHT
BECAUSE EVERY LAST DETAIL IS RIGHT UNDER YOUR
NOSE . . .NO HIDING ANYTHING BEHIND THE
BARN**



MAINTENANCE MATTERS

WEEDS

FURNITURE

DEAD FLOWERS

OVERGROWN SHRUBS

TOOLS LEFT OUT

It all shows



**YOU NEED TO CONSIDER SAFETY AS WELL –
WHO'S USING THE SPACE
CAN YOU GET EQUIPMENT OR SUPPLIES IN & OUT EASILY?**



Okay if you
don't want to
use your
balcony for
anything else

Zone (6-8)
Light/exposure
Water needs
Size at maturity

**WITH CAREFUL SELECTION –
YOU CAN GROW ALMOST ANYTHING
- ANYWHERE**



EVEN A
SMALL
BALCONY
CAN HAVE
A GARDEN



**ADD A WATER FEATURE –
BUT DON'T OVERWHELM
YOUR SPACE**



**Birds can't resist the
sound of running
water**



A WATER FEATURE
DOES NOT NEED
TO BE EXPENSIVE



**A PATH TIES
ELEMENTS
TOGETHER**

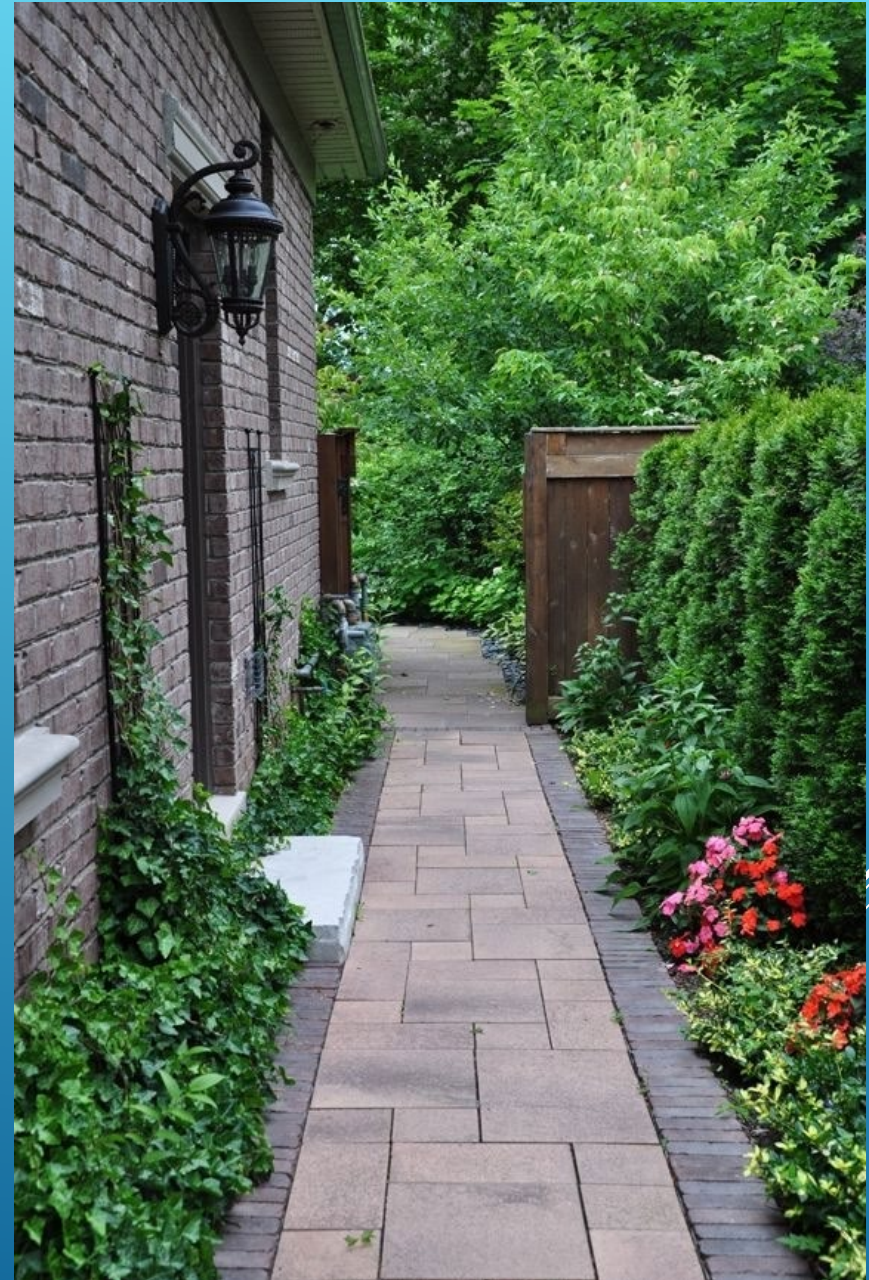
**IT HINTS AT A
DESTINATION**





shutterstock.com • 543136921

**EVEN A SIMPLE SIDEWALK
CAN BE BEAUTIFUL**





PATH YES . . . PEA GRAVEL NO



THIS CAN BE
YOUR GARDEN
ART . . .

BUT IT DOESN'T HAVE TO BE



www.shutterstock.com · 2177547649

**MIGHT NOT
HAVE A
CHIHULY,
BUT YOU
CAN HAVE
A PAINTED
POLE**



www.shutterstock.com · 2141259751



EVERY GARDEN
NEEDS A TOUCH OF
ART...
*IT CAN BE FUNCTIONAL OR
PURE WHIMSY*





Even a squash can be art



YOU GET TO
DECIDE –
*HOMEMADE OR STORE
BOUGHT*





**A GAZING
BALL CAN BE
AS REFLECTIVE
AS A WATER
FEATURE**



GABION





**GOT AN OLD
BROKEN
DOWN
BICYCLE?**

HERBS - ABSOLUTELY

Mint – Sage –
Rosemary – Thyme
Oregano – Chives –
Tarragon
(all perennial)
Parsley – Cilantro –
Basil *(annuals)*

Some are tough
enough that they
can be planted &
ignored
All do well in pots





**VEGETABLES CAN BE AN IMPORTANT
ELEMENT IN YOUR GARDEN –**



**CAN BE A TRADITIONAL ROWS, SQUARE
FOOT GARDEN OR CONTAINERS OR USE A
TRELLIS**



**TOMATO . . .
GREEN BEANS . .**





MAKE VEGGIES A PART OF YOUR GARDEN
THINK OUT OF THE BOX
TRY DIFFERENT WAYS TO ADD FRESH
FOOD



**SOME FRUITS & VEGETABLES CAN BE
GROWN IN HANGING BASKETS**



MIX FLOWERS, HERBS & VEGGIES



**2 “6 PACKS” OF IMPATIENT
CAN MAKE A BIG
DIFFERENCE**

BABY STEPS ... EVEN SMALL SPACES DON'T CHANGE OVERNIGHT



*In some places I have managed
to get rid of the river rock – my
long term goal*





USE HANGING
BASKETS TO ADD
HEIGHT

When designing a garden – remember there are 4 seasons
And beauty to be had in all of them



**The glory of gardening: hands
in the dirt, head in the sun,
heart with nature. To nurture a
garden is to feed not just the
body, but the soul.**



QUESTIONS?

Consider Becoming A WSU Lewis County Master Gardener!

- Community & Youth Outreach!
- Continuing Education!
- Horticultural Training!
- Social Activities and more!



**Contact the Master Gardener Program Coordinator at (360) 740-1216 or
jason.adams@lewiscountywa.gov or visit www.lewis-mg-mrc.org**

THANK YOU FOR ATTENDING GARDENING FOR EVERYONE!

WSU Lewis County Master Gardeners
17 SW Cascade Ave., Chehalis, WA 98532
<https://lewis-mg-mrc.org/>
<https://extension.wsu.edu/lewis/>
(360) 740-1216

Three white diagonal lines of varying lengths and thicknesses are positioned on the right side of the image, extending from the middle towards the bottom right corner.