



San Juan County

4-H 

WASHINGTON STATE UNIVERSITY  
EXTENSION

## **4-H Cavy Round Robin Questions**

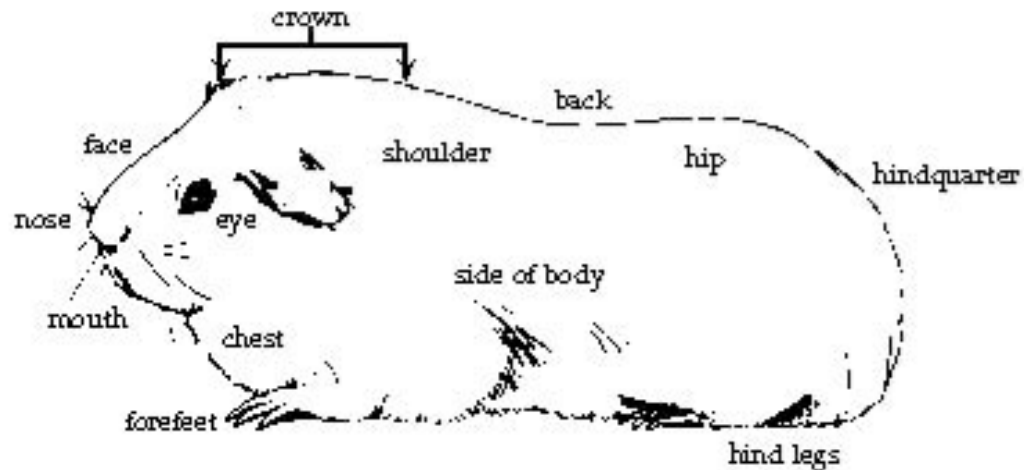
### **Breeds/Cavy info**

1. Q. How many breeds currently are accepted by ACBA?  
A. 13
2. Q: What does ACBA stand for?  
A: American Cavy Breeders Association
3. Q. Name three general disqualifications  
A. Visible illness, external parasites, coat faults, bare spots where there should be hair, broken or missing teeth, pregnant sows, incorrect color variety.
4. Q. Which breed of cavy has rosettes?  
A: Abyssinian
5. Q: what is the difference between a fault and a disqualification?  
A: A fault is a defect in the animal that will result in subtraction of points.  
Disqualification is a feature/aspect/characteristic/requirement that is not met or should not be present and results in the animals disqualification from show.
6. Q: what are the 5 color groups?  
A: self, agouti, solid, marked, Tan.
7. Q: What is a crest?  
A: a rosette found on the forehead of a crested cavy.
8. Q: Name three Breeds of Cavy  
A: American, American Satin, Abyssinian, Abyssinian Satin, Coronet, Peruvian, Peruvian Satin, Silkie Satin, Silkie, Teddy, Teddy Satin, Texel, White Crested.
9. Q: What is a pedigree?  
A: A document that shows the ancestry of your cavy back 3 generations.
10. Q: Name the 4 long haired breeds  
A: Peruvian, silkie, texel, coronet.

### **Anatomy**

1. Q: What is a male cavy called?  
A: A boar
2. Q: What is a female cavy called?  
A: A sow
3. Q: What is a baby cavy called?  
A: A pup
4. Q: How many toes do cavies have on their front and back feet?  
A: 4 on their fronts and 3 on their backs
5. Show me the crown on the guinea pig.

6. Show me where the crest would be on a white crested cavy. (forehead).
7. Q: List two Anatomical/structural disqualifications for all cavy: deformities, eye ailments, teeth deformities/problems, testicular abnormalities, toenail discontinuities
8. Q: How many eyelids does a cavy have and what are they called? A: Three: upper, lower, and inner



**The American cavy**

## **Health/Diseases**

1. Q: What is the life span for a cavy?  
A: 5-7 years
2. Q: What is it called when a sow gives birth to her pups?  
A: Farrowing
3. Q: what age is it usually safest to breed a cavy?  
A: 3-6 months (12-24 weeks)
4. Q: what are the symptoms of illness? List three.  
A: Off feed, off water, listlessness, sitting hunched in the corner, eyes half closed, hair ruffled, any discharge, dull coat and eyes, sudden weight loss, excessive thinness.
5. Q: What is Bacteria?  
A: tiny one-celled organisms; some are helpful to digestive process and some cause diseases.
6. Q: What are some symptoms of heatstroke, the cause and how you control it?  
Symptoms: drooling, weakness, heavy breathing  
Cause: exposure to heat or direct sun  
Control: get out of the sun, provide water, keep cavy cool.
7. Q: What is Scurvy?

- A: A disease caused by lack of vitamin C in the body.
8. Q: What is the ideal temperature for a cavy's cage?  
A: 55-75 degrees Fahrenheit
9. Q: List two external parasites  
A: lice, mites, selnick mites, sarcoptic mange mites, ear mites.
10. Q: List two internal parasites?  
A: roundworm, coccidiosis, tapeworms, hookworms.

#### **4-H Lore**

1. Q: Give me two examples of show etiquette  
A: Never touch another exhibitor's animal. Never talk out of turn while at the show table. Respect the show venue. Do not complain about the judging. Never speak ill of another breeder/judge/exhibitor. Be a gracious winner
2. Q: In what year was the Smith-Lever act established?  
A: 1914
3. Q: What is the 4-H Slogan?  
A: Learn by doing.
4. Q: What is the Sportsmanship Motto?  
A: Keep your head when you win, and your heart when you lose
5. Q: In San Juan County, what are the three contests that all animal project members must participate in?  
A: Herdsmanship, showmanship, and judging
6. Q: True or false? The 4-H clover emblem originally had three leaves.  
A: True
7. Q: Why was the 4-H youth program originally started?  
A: To educate the young people so they would share their new farming techniques with their parents.
8. Q: If you are primary 4-H member, name two projects you cannot enroll in.  
A: Swine, sheep, cattle, horse, large breed goats, llama/alpaca, shooting sports, food preservation using hot water or pressure canning, any project using motorized vehicles, livestock sales and shows
9. Q: What federal agency oversees 4-H?  
A: U.S. Department of Agriculture
10. Q: Where is the annual national teen conference held?  
A: Chevy Chase, MD; Washington DC is also an acceptable answer
11. Q: What is the 4-H Motto?  
A: To Make the Best Better
12. Q: What do the 4-H colors symbolize?  
A: green for springtime, growing things, youth and life, white for purity.