



Snohomish County

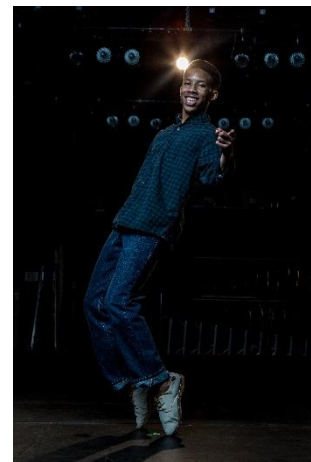


WASHINGTON STATE UNIVERSITY
EXTENSION



Snohomish County

CloverGram
February 10, 2023



Woohoo!

125 adults in our 4-H community have provided feedback through the Annual Survey! You can contribute your opinions through Feb. 15th at https://wsu.co1.qualtrics.com/jfe/form/SV_eeonlj9UCLUK3em Prize drawings!

New Stuff:

Calling All 4-H Performers: Do you want to be a STAR?????!

Now is your chance, as 4-H is revamping its Performing Arts Program for Snohomish County 4-H under the new leadership of Judy Yablonski, who brings a wide range of performing dance experience and musical knowledge to share with our youth.

If you have dreams of singing, dancing, acting, being a musician, doing stand-up comedy, or maybe even being in the circus, or doing magic, then this program is for you! Or maybe you want to do lighting, sound, or scenery for such performances. If so, no matter what level you are at, beginner or advanced, this program is for you!!!!

Come to our introductory Zoom meeting, where we will discuss your ideas for how, where, and when our program members will show off/develop their talents. Zoom meeting will be Monday, February 27th, at 5:30 p.m. Please RSVP if you plan to attend at yablo@efn.org. Contact Judy at yablo@efn.org or 206-892-8856 with any questions.

Youth Advisory Council!

Calling ALL 4-H Members in Snohomish County! Come check out the 4-H Youth Advisory Council!! Our next meeting is Wednesday, February 15th at 6:30 pm via Zoom. Sign up here to get the link to join in the fun and gain leadership experience! <http://bit.ly/3YooWDh>

Mental Health First Aid

New dates for adult class, about adults: Tuesday, February 21st OR Saturday, March 18th. Find the Youth and Adult Mental Health First Aid class offerings here: <https://extension.wsu.edu/snohomish/volunteer-education/>

Community Service Opportunity

Clubs with animals! Warm Beach Senior Assisted Living Center is looking for some supervised animal visits for the enrichment of the residents. If interested, please contacted Hillary Erlandson, Activities Director, at 360-652-2602 or herlandson@warmbeach.org.

Click the Train to sign up for a helper slot at the Train Show!! Let's make some money for 4-H!



Past CloverGram newsletters can be found at <https://extension.wsu.edu/snohomish/4h/resources/>