



CLOVER REPORT



Klickitat County 4-H Newsletter
MARCH 2020

Read the most up-to-date regional response to

**ALL NON-VIRTUAL
4-H EVENTS
ARE
CANCELLED**

CONTACT YOUR LOCAL
WSU EXTENSION OFFICE
WITH QUESTIONS

COVID-19

Coronavirus COVID-19

COVID-19 Advisory: WSU Extension is working to keep our communities safe. All Extension programming is being provided virtually, postponed, or canceled. Effective March 16, 2020, WSU Extension county offices and WSU Research & Extension Centers will be closed to the public. We are available via email, phone, and webconference.

Impacted Events:

1. *Crafty Kids – March 18th*
2. *Beef Pre-Show–March 22nd*
3. *Horse Clinic*
4. *Crafty Kids – April 15th*
5. *Swine Pre-Show-May 11th*

COVID-19 LINKS

CDC [here](#)

WA Department of Health [here](#)

WSU COVID-19 Updates [here](#)

UPCOMING VIRTUAL EVENTS

March 30 – Horse Leaders & Leaders Council Meetings

March 31 – New Volunteer Orientation 6-8:30 pm

April 26 - Horse Leaders & Leaders Council Meetings

May 1 – Horse Certificates Due!

May 1 – Enrollment for Participation in Fair **DEADLINE**

For more details, visit our County Extension website!

<https://extension.wsu.edu/klickitat/>

QUICK CLICKS

4-H+ Activities [here](#)

State 4-H Newsletter [here](#)

4-H Curriculum [here](#)

4HOnline [here](#)

Welcome to Klickitat 4-H [here](#)

Leader Resource Page [here](#)

Like us on Facebook [here](#)

Log Volunteer Hours [here](#)

WA State 4-H Projects List [here](#)

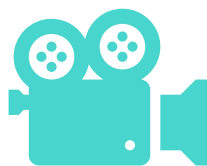
County Extension Website [here](#)

4-H Clover Calendar [here](#)

We have a new office location

Want to host a 4-H meeting via Zoom? We'll help you set it up!

Here's a video on using zoom for the first time.



A note from Abby Brandt -

Schools are shut down, people aren't gathering in groups of 10 or more, and many businesses are shutting down or changing how they operate. We all recognize that we're operating in uncharted territory and uncertainty.

WSU Extension is committed to keeping our communities safe and the 4-H Program is as focused on providing positive Youth Development as ever, regardless of the delivery mode. I want you, our leaders and families, to think about how we can help support each other.

- 1) Recognize that our youth are experiencing stress, which may build up to a level of trauma, so are many of us adults.
- 2) Stress/Trauma effects our brains in different ways and children may start changing their behaviors. Respond to the cause of the behavior with compassion, not to the actions of your children.
- 3) Stay connected safely! We are happy to help clubs figure out ways to stay connected electronically.

<p style="text-align: center;">Belonging -</p> <p>Help show others that you miss them and find ways to connect.</p> <ul style="list-style-type: none">• Zoom call to check in and hear about everyone's projects or plans.• Start a group Facebook chat, SLACK room, or Google Hangouts. (Remember to practice safety online and ask parental permission.)• Send snail mail!	<p style="text-align: center;">Mastery -</p> <p>Time out of school can be used to learn or build upon skills and interests. Check out https://extension.wsu.edu/king/learning-links-4-h-and-more/</p> <ul style="list-style-type: none">• Think Hands-On!• Take Virtual Tours• Master skills to help with stress management like deep breathing, stretching exercises, dance to their favorite music, or take a short walk outside.
<p style="text-align: center;">Independence -</p> <p>Help youth set their own goals for the next 6 weeks and build support for them to work toward those goals.</p> <p>Here's a resource on helping youth set S.M.A.R.T. Goals https://4-h.org/about/blog/goal-setting-for-the-new-year-ask-a-4-h-member/</p>	<p style="text-align: center;">Generosity -</p> <p>4-H Members already practice caring for their communities. Talk about the importance of social distancing as a way that we think about protecting those more vulnerable than ourselves. Look at practicing good hygiene as a way to care for others. Write letters to those in Senior Care Facilities or Community Living Facilities like New Hope Farms.</p>

I think of our 4-H Pledge a little differently right now -

I pledge my head to clearer thinking *accepting and following the practical steps being asked of us all*

My heart to greater loyalty *to my community members, family, and friends by choosing to think of them*

My hands to larger service *acting in a way that puts the needs of others first like socially distancing myself*

My health to better living *so that we can all move forward healthier and more united*

For my club, my community, my country, and my world!

Stay connected with us via email, phone, and Facebook.

ANNOUNCEMENTS



- Re- Enrollment is open through wa.4honline.com
- Sign-Up for your 4-H Membership Cards – <https://forms.gle/cLurUWL8inNWS8LH9>
- Our office is closed to public until April 24th. Stay connected via email, phone, and Facebook!
- There is a 4-H Teen Conference coming up June 22-25th hosted by the University of Idaho. Washington 4-H teens have been invited to participate! For more information and scholarship opportunities- talk to Abby!

We are closed to the public but you can still

CONTACT US!

📍 228 W Main, MS-CH 12 Goldendale, WA 98620

☎ (509)773-5817 📱 Klickitat County 4-H

Abby Brandt

Klickitat County 4-H Program Manager

✉ abbyb@klickitatcounty.org

☎ (509)773-5817

Missy Cummins

4-H Regional Specialist

✉ missy.cummins@wsu.edu

☎ (360)397-6060 Ext. 5714

For questions comments, concerns, or to be featured in the newsletter, please email abbyb@klickitatcounty.org

4-H Office Update

In response to recommendations on social distancing provided by the CDC, the Washington State Department of Health, Klickitat County Health Department, Washington State University has advised that all Extension offices will be closed to the Public. The office is conducting business by telephone and internet in an effort to minimize group gatherings.

What We're Working On:

- Continued Communications with Families and Partners
- Unpacking (still)
- Enrollment Support
- Archiving
- Remote Learning Support

Report Volunteer Hours!

Use your phone, tablet, pc, laptop and log on to the WSU Volunteer Database, <http://ext.wsu.edu/Volunteers/logon.aspx>, to report your volunteer hours each month.

Your user name will be either your last name only or your first & last name with a space in between. The password is password! (don't forget the exclamation point).



EXTENSION

**2020
FAIR
THEME!**



Fair Market Sale Pre-Shows

Sheep/Goat - June 7th, 5-7 pm

Rabbit/Poultry - August 11th, time TBA

The Washington State 4-H Fair will be September 4-27, 2020 in Puyallup.

Raise two pigs, sell one, take a breeding gilt to the State Fair! Raise a litter of rabbits, sell one pen of 3, show a single Fryer at Fair and enter the rabbit as a Roaster at State!

If you want to show an animal at the State Fair it must be owned by you or under a lease agreement. An animal that has gone through the Market Sale and was not turned back to the member is ineligible.

Stream Explorers Camp Hosted by Klickitat Trout Unlimited

May 15 - May 17, 2020

A weekend full of watershed exploration, new friends and fun!

Campers will see our streams in ways that they never would have imagined! Sessions include aquatic bug investigation, stream dynamics, watershed reflections, introductions to fly fishing, fly tying and nature art. Camp provides social and academic opportunities for local 4-6th graders in the great outdoors! Space is limited for the overnight camp with priority going to Klickitat County students.

Camper registration required. **Registration will open in April 2020.**

Weaver Leather has a **FREE Clipping Poster** available for anyone who has purchased from them. All you need is your item number and a couple of minutes to fill out the mailing information.



wa.4honline.com

4-H GROWS HERE



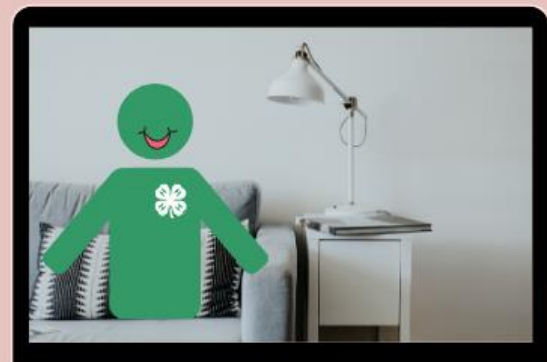
SPOTLIGHT ON CURRICULUM

It's a great time to explore gardening and more with your 4-H club! Discover Kits tell you step by step how to lead these projects for any group of youth. **ALL FOR FREE!**

Find Resources at:
Utah4h.org/discover/



4-H Council Meetings are going virtual



WSU Extension programs, employment, and volunteer service are available to all without discrimination. Concerns regarding potential discrimination may be reported through your local Extension office or directly to the WSU Office for Equal Opportunity. Persons with disabilities who require alternative means for communication or program information or reasonable accommodation should contact Abby Brandt at abby.brandt@wsu.edu or abbyb@klickitatcounty.org at least two weeks prior to the event.