



WASHINGTON STATE
UNIVERSITY

Facilities Services Newsletter



October 2018

Plant Science Building Drilled Shafts/Vibration Monitoring By Jason Baerlocher

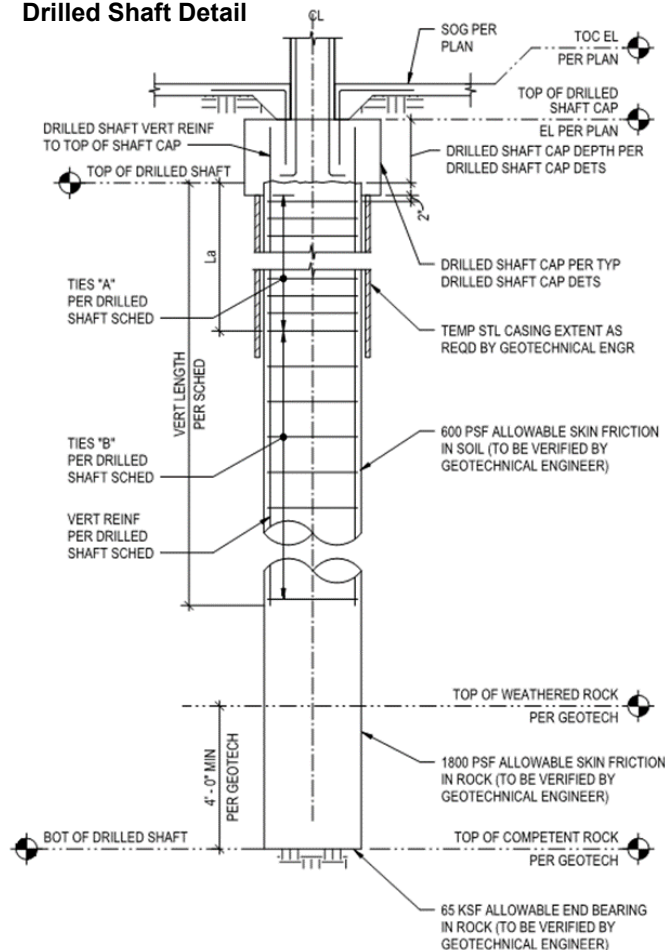
Inside this Issue:

Plant Science Building	1—2
New Sewer Vacuum Jet Truck	3
Retirements	4
WSU Holiday Schedule	4
Service Awards	5—7
Promotions	7 & 8
New Employees	8
Boot Truck Coming	9
Useful Excel Keyboard Shortcuts	9
Thanks for Working Safely Winner	10
KUDOS	10
Training Schedule	11
APP Safety Question Contest	12

Construction on the new WSU Plant Sciences Building, an 83,000SF, four-story research facility is well under way. The building is being designed and constructed by a team from Skanska and LMN Architects.

One of the most dynamic features of this building is the underground structural components that will support the structure off the bedrock far below the surface. The structural components to the new building consist of thirty-two drilled shafts that vary in size from 3'-0" to 4'-6" in diameter. These shafts will be the building blocks on which the new building is erected. Skanska has sub-contracted this scope of work to Motley and Motley Civil Contractors and Montana Helical Piers with inspection and testing being performed by Geo Professional Innovation (GPI). Montana Helical has elected to bring in an SR 30 drill rig that has the capacity to perform the drilling of the various sizes of shafts, as well as drill the temporary steel pile that will be installed. The drilled shafts --

Drilled Shaft Detail



will reach depths of 50'+ during the installation. Rebar cages will be dropped into the shafts prior to being filled with structural concrete. Simultaneously, Motley and Motley will then execute the civil excavation to approx. Plant Sciences.....continued on page 2

Enter the Safety
Question Contest
on the last page of
this Newsletter
and you could win a
PRIZE!

22' below asphalt grade. The temporary shoring system was designed by GPI and will allow crews to safely enter the deep excavations to build the basement and connect the "spline corridor" to the existing Bio Tech building. GPI also engineered the "helical" underpinning that will support the existing utility corridor on one side, while the deep excavations take place at the new building pad. These helical anchors will keep the under-ground concrete utilidor from turning over as one side is exposed by excavation approx. 7'6" deep, and the existing earth is pushing laterally from the opposite side. This is to provide safe access for crews to install structural footings and walls that will support the new building.

The Plant Science Building is being constructed as the fourth facility in the Research and Education Complex (REC). Constructing a facility that has working labs including a Vivarium on three sides comes with many challenges. WSU Facilities, Research Staff and Skanska have been a coordinating this effort since the early design phase. The structural components, including the foundation were specifically designed in part to reduce the construction impact on the adjacent facilities.

Precautions have been taken to minimize the effects on research and lab animals that reside in the Bio Tech building. Vibration pads were installed under lab racks that house the animals and the majority of the animals were moved to new locations in the basement away from the proximity of the new construction. This effort was to minimize noise and vibration that the animals would be exposed to during the construction process. Skanska also acquired Hi-tech vibration monitoring equipment that would be used daily to record vibrations that were being transferred from drilling and excavation equipment underground. These recordings are taken several times a day during peak activity to create a baseline of vibration levels that can be used to coordinate research and experiments in off-peak times, so testing is not disturbed and accurate research results are obtained.

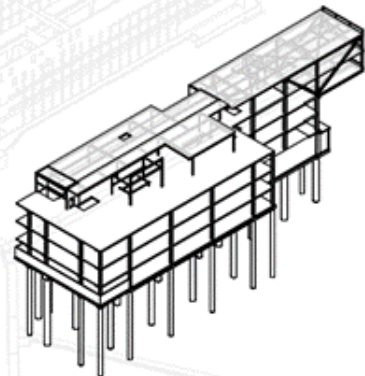
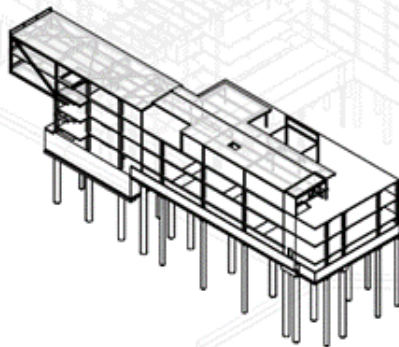


On Site Drilling Equipment



Temporary Shoring System Being Installed

Plant Science
Building
Structural
Components



New Sewer Vacuum Jet Truck.....by Eric Slocum



It is finally here! After a number of years on our equipment replacement list we were able to trade in our well used 2005 Vac-Con sewer jet truck for a new model. Specifications were put together by the operators that run the truck and Solid Waste Systems won the bid with a new Vac-Con brand truck. We are excited to have the new truck and if you ask anyone in Utilities or Heavy Equipment they would say it is the most valuable and important piece of equipment on campus. It is used for sewer backups, cleaning sewer lines, investigative potholing and hydro excavating. It saves damage during excavation projects and keeps the crew out of wet situations while working on underground pipe repairs. We can't even remember all the shoveling and damages we dealt with before we purchased the first Vac-Con truck. It is a real life saver!

The new truck will be different from the old truck in that it has more capacity in the debris tank at 9 cubic yards vs. 5 yards and is a dual axle truck. It will have more water on board with 1000 gallons that can be pumped at 50 gallons per minute at 300 psi and it has the ability to pump off excess water from the debris tank when necessary during water leak situations. Another change in this truck is the vacuum system will be powered by a positive displacement blower unlike the other truck which had a fan driven unit. The truck chassis is a Freightliner model 114SD with an Allison automatic transmission. The first thing most people will notice with this truck is it is a bright Cougar's color crimson; it is a very good looking machine! It is almost too pretty to be out working in sloppy muddy conditions; almost, but not quite! The operators will have fun working with this new truck and figuring out how to keep it clean!

Open to the public every Friday 10am-3pm



WSUSURPLUS

ebay

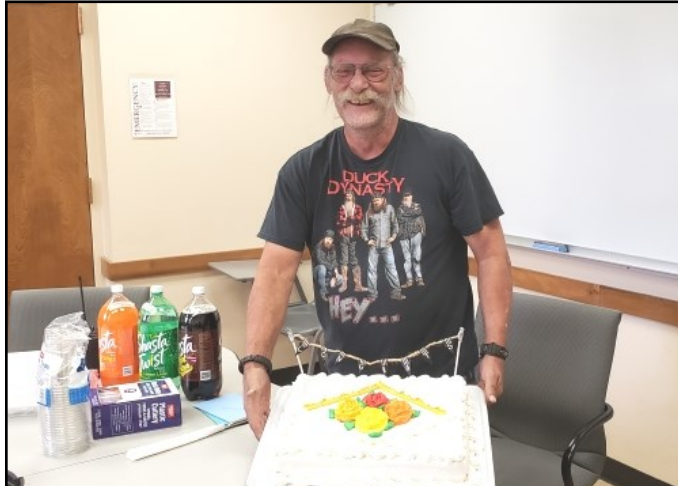
GovDeals

Public Surplus

<http://surplus.wsu.edu>

Find us on Facebook

RETIREMENT CONGRATULATIONS!



Bill Lawson was honored with a retirement celebration on September 28, 2018. Thank you Bill for your many years of service to WSU. Enjoy retirement!



Tom Burrirt was presented with his retirement certificate on August 30, 2018 at a retirement reception in his honor. Presenting the certificate to Tom were Chris Fischer, Assoc. Director of Maintenance & Utilities and Dan Costello, Asst. Vice President.

Other recent retirements not pictured are:

Ted Aarstad, Steam Plant

Jodie Magers, Maintenance Services

Helen Peru, Custodial Services

Congratulations

Congratulations

Congratulations to our retirees and thank you for your service to WSU.

ENJOY RETIREMENT!

WSU Holiday Schedule

Veterans Day	November 12, 2018
Thanksgiving	November 22-23, 2018
Christmas	December 24 & 25, 2018
New Years Day	January 1, 2019

Martin Luther King Day	January 21, 2019
Memorial Day	May 27, 2019
Independence Day	July 4, 2019
Labor Day	September 2, 2019

SERVICE AWARDS



Jon Schlee
5 Years



Craig Cole
5 Years



Craig Gray
5 Years



Kathie Jahn
5 Years



Melissa Tholstrup
5 Years



Colleen Baldridge
10 Years

SERVICE AWARDS



Kellie Jones
10 Years



Joanie Thomas
10 Years



Justin Baxter
15 Years



Tom Wilson
15 Years



LtoR: President Schulz, Dr. Noel Schulz, Cui Shen, Ben Triplett and Dan Costello. (Cui is the custodian for the President's Residence.)

Cui Shen
20 Years



Roy Senter
30 Years

SERVICE AWARDS



Chris Fischer
35 Years



**Service Award Recipients
Not pictured:**

Kurt Brantner.....5 Years
Jason Brausen.....5 Years
Eric Sorenson.....5 Years
Kenneth Twitchell.....15 Years
Pete Larsen.....30 Years

PROMOTIONS!



Daniel Chilson
Stationary Engineer 2



Jim Sharp
Electronics Technician 3



Daylight Savings Time Ends
Sunday, November 4, 2018
Set Your Clocks
Back 1 Hour!



PROMOTIONS!



Katy Kilborn
Custodian 4



Scott Cleveland
Electronics Technician 4

WELCOME NEW EMPLOYEES!



Pictured LtoR: Josh Gregg, Nicholas Reisenauer, Ben Triplett, Daniel Ruesga, Adrian Staab, Addison Hood, and Joe Kline

New employees were welcomed and introduced by Joe Kline (pictured far right) at the Service Awards Presentation in the Carpenter's Shop on September 27, 2018. Welcoming the employees are Josh Gregg, Supervisor Grounds (far left) and Ben Triplett, Director Custodial Services (third from left). New employees pictured above are Nicholas Reisenauer, Grounds Nursery Services Specialist 2; Daniel Ruesga, Custodian 1; Adrian Stabb, Custodian 1; and Addison Hood, Custodian 1.

New employees not pictured: Gerald Osgood, Custodian 1; Donald Sundman, Custodian 1; Colin Fearn, Custodian 1; (Jamie) Yamie Jefferson Milan, Custodian 1; Isaac Sullivan, Custodian 1; and Alexandra Huntly, Custodian 1.

Welcome



Summit Boot Truck is coming to McCluskey Services on November 7, 2018 from 8 a.m. to 4 p.m.



Be sure to check the policy, "Procedures for Obtaining Safety-Toe Footwear" dated March 2, 2015. You can find the policy on the Facilities Services Sharepoint site under Policies or ask your Supervisor for a copy. Your Supervisor will provide you with your boot voucher. If you have any questions on your balance, please contact Kellie Jones 335-9004 or Amy Hickman 335-9339 both can be found in Facilities Services Accounting, McCluskey Office #159.

Useful Excel Keyboard Shortcuts

1. To format any selected object, press ctrl + 1
2. To insert current date, press ctrl + ;
3. To insert current time, press ctrl + shift + ;
4. To repeat last action, press F4
5. To edit a cell comment, press shift + F2
6. To autosum selected cells, press alt + =
7. To see the suggest drop-down in a cell, press alt + down arrow
8. To enter multiple lines in a cell, press alt + enter
9. To insert a new sheet, press shift + F11
10. To edit active cell, press F2 (places cursor in the end)
11. To hide current row, press ctrl + 9
12. To hide current column, press ctrl + 0
13. To unhide rows in selected range, press ctrl + shift + 9
14. To unhide columns in selected range, press ctrl + shift + 0
15. To recalculate formulas, press F9
16. To select data in current region, press ctrl + shift + 8
17. To see formulas in the worksheet, press ctrl + shift + ` (ctrl + ~)
18. While editing formulas to change the reference type from absolute to relative vice versa, press F4
19. To format a number as currency, press ctrl + shift + 4 (ctrl + \$)
20. To apply outline border around selected cells, press ctrl + shift + 1
21. To open the macros dialog box, press alt + F8
22. To copy value from above cell, press ctrl + '
23. To format current cell with comma formats, press ctrl + shift + 1
24. To go to the next worksheet, press ctrl + shift + pg down
25. To go to the previous worksheet, press ctrl + shift + pg up

Thanks for Working Safely!



Leif Erickson and Rick Magers Are WINNERS! “Thanks for Working Safely!”

The Insulators were wearing all their PPE while performing their duties in 105 degree weather in the tunnels (which would make it super hot down there). They discussed safe practices with me and got the job done so the CUB could get back on line for the start of the school year. Good job guys!

KUDOS

“I wanted to take a quick moment to say that the carpet looks FANTASTIC! Your staff (**Tammy Kelly, Jonathan Williams and Anthony Johnson**) did a great job...thank you! It is a nice way for someone to start off their first day with our center, with a clean space.”

S. Hamada

“I just wanted to drop you a note and let you know that **Miguel (De La Mora)** came out this morning and the signs looks great! We enjoy working with Miguel, he does good work and is very helpful.”

L. Jasmer

“This is great. I am excited to hear how this project makes a difference for students and drivers in such a busy area. I appreciate you and your teams hard work. (Project Stadium Way & Spokane Street Crosswalk Beacons. Employees that worked on the project: **Doug Lopes, Cyndi Arbour, Rich Miller, James Self, Jeff Gullick, Miguel DeLaMora, Victor Edenso, Tom Wilson, Jerrad Graham, Ray Aske, Rick Hull Jr., Neal Wallen Chand Congdon, Steve Gates, William Ettenhofer, John Black, Robert Allen, and Chad Palmer.**)”

J. Frost

“Thank you for all of your efforts in assisting Avista’s gas replacement program on campus this summer. There is no doubt the numerous pre-construction meeting and brining in the facilities stakeholders made a significant impact. Specifically I wanted to call out the work of **Tim Leachman and Dale Clark**. From their knowledge of your steam tunnels, underground facilities and problem solving skills they went above and beyond in assistance to NPL and Avista.”

C. Lee

“We ordered some help with our current power situation and got it incredibly fast. This has been helping us immensely over the past few days. perhaps even helping save lives with the machines used to operate properly in our Small Animal ICU/ECC. THANK YOU **TOM WILSON!!!!** This man deserves more than just a pro-

motion and a raise. He should be recognized as one of the best on your team. His knowledge and work ethics need to be passed on to others. Just my opinion. He is one of the best I have seen in my three years of working here. I have submitted numerous work orders for the hospital and he along with **Jason Brausen**, a Carpenter shop guy, are amazing. Makes me wish they worked for us all the time. I know these are not the only two who have helped me. Thank you Fac Ops for always being there for us. and super kudos to those I mentioned. “

F. Aguilar-Contrer

“Please pass along my appreciation and gratitude to **Kathie (Jahn)**. She has been and continues to be an absolute pleasure to work with!”

I. Ortlieb

“A special thanks goes out to **Rick Hull, Neal Wallen, and the Pipefitters** in that group that have performed very professional Journeyman level work in the Steam Plants over the last couple years. You have improved the safety of our system operations and made our operational work tasks much easier. Just one example is the current revision the boiler feedwater piping systems at the Grimes Plant. Moving the valves down to floor level is a huge improvement in our process of bring units online and offline while reducing the risk of injury by climbing ladders and accessing difficult locations. A special thanks goes out to **Jeff Lannigan and the MCR committee** for making this possible. We appreciate all you’ve done for us.”

Steam Plant Staff



TRAINING for OCTOBER and NOVEMBER

Facilities Services Training	Date/Time	Location
Cultural Competency Enrollment Capacity 43/50	Wed, Oct 3 9-12pm	Lighty 405
Shop Safety Meeting (Cold Weather Safety)	Tues, Oct 9 Shops Schedule	TBD by Shop
Hearing Test	Tues, Oct 9 7am -3:15pm	EHS
Silica Awareness (Class size is very limited)	Tues, Oct 9 10:15 am	Grounds Break Area
First AID/CPR/AED Enrollment Capacity 1/12	Tues, Oct 9 8-12pm	McCluskey Admin Conf. Rm 173
Asbestos/Lead Awareness for Trades Worker	Wed, Oct 10 8-10am	EHS Basement
Hearing Test	Tues, Oct 16 7am -3:15pm	EHS
Capital Safety Training	Wed, Oct 17 8:15am	TBD
Cultural Competency	Wed, Nov 7 9-12pm	Lighty 401
Shop Safety Meeting – Safety Reps Choice	Tues, Nov 13 Shops Schedule	TBD by Shop
First AID/CPR/AED Enrollment Capacity 0/12	Tues, Nov 13 8-12pm	McCluskey Admin Conf. Rm 173
Asbestos Worker Refresher	Wed, Nov 14 8-4pm	SCUE 518
Asbestos Worker Refresher	Thurs, Nov 15 8-4pm	SCU 518
Hostile Intruder Enrollment Capacity 2/45	Tues, Nov 20 10-11:30am	Lighty 405

Questions on signing
up for a class?

Contact: D. Thomas
at the front desk in
McCluskey Office
Bldg.
or 335-9051

Want to Get Involved

in a Facilities Services Committee?

The Safety Committee's Budget Subcommittee is looking for more members. This is the committee that is responsible for the "Safety Design Contests." They also manage the "Thanks for Working Safely Awards" and the "APP Question Contest." The meetings are held at 8:30 a.m. on the fourth Wednesday of every month in McCluskey. If you are interested in joining the committee, talk with your supervisor and then contact either Kellie Jones 335-9004 or Jann Dahmen-Morbeck 335-5572. Thank you for getting involved!

Facilities Services Safety Committee

Safety Question Contest for the Month of October 2018

Directions: The answer to the question below can be found in one of the chapters of the Accident Prevention Program (APP). Read the question carefully. When you think you have found the answer, you may email your answer to Jann Dahmen-Morbeck jann.dahmen@wsu.edu or print off this page and cut out the form on the dotted lines. You may give the form to your supervisor to send in intercampus mail to Jann or drop it off at her desk in the front reception area of McCluskey Office building. The names of all employees who submit the correct answer will go into a hat for a drawing. Whoever's name is drawn will be able to pick out one of the monthly safety awards. This contest will be open only until 5 p.m. on October 24, 2018, so get started finding the answer now and win a nice prize! Link to APP Chapters: <http://facops6.ad.wsu.edu/safety/APP%20Manual/Forms/AllItems.aspx>

QUESTION: Chapter 19—Motorized Vehicles and Equipment.
Vehicle and equipment operators must comply with
RCW _____ rules regarding hand held devices.

Answer:

Employee submitting the above answer:

Name: _____ Division: _____

August's Question and Answer: "What are the listed nine "Signs and Symptoms" of Heat Exhaustion in APP Chapter 17: Heat Stress Program?" ANSWER: High pulse rate, Extreme sweating, Pale face, Insecure gait, Headache, Clammy and moist skin, Weakness, Fatigue, and Dizziness .



James Garret is the Winner!

James entry for the Safety Question was randomly selected from the total entries with correctly answered questions. Those correct entries not chosen will be placed in the bucket for the annual Safety Award Drawing at the 2019 Facilities Services Picnic.

Thank you to all that entered the contest!