



Progress on the McCluskey Addition

By Michael LaVielle



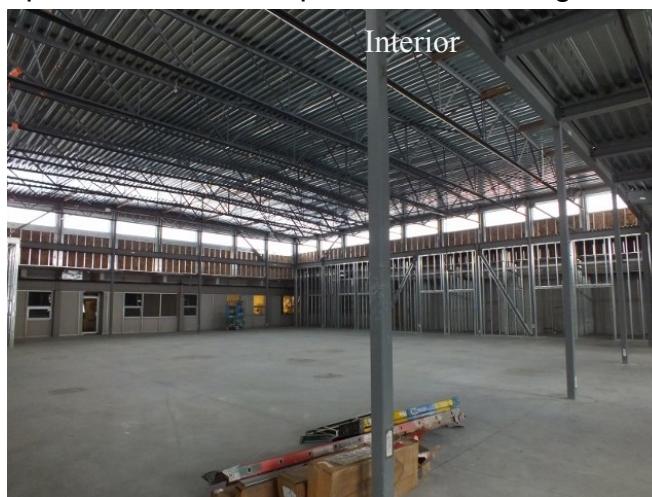
New south-facing wall of the
McCluskey Addition.

McCluskey Addition - Phase I was successfully completed on November 19th after 195 calendar days of construction, which began on April 29th of this year.

The project scope included constructing a 10,800 sqft addition to the existing McCluskey building along with a new parking lot, relocating the building's transformer, and installing new fire sprinkler and alarm systems for the new addition and parts of the existing McCluskey building. Limited HVAC, plumbing and electrical work were also included and will be competed in the Phase II – Tenant Improvement project.

The Phase I contract was awarded to Wellens Farewell, Construction out of Enterprise, Oregon for a total construction cost of \$1,948,000. Design-West was the supporting project A/E, Kevin Poitra and Michael LaVielle were the Project and Construction Managers, respectively.

The Phase II - Tenant Improvement will complete the remaining interior utility work and construct the interior offices, lighting, and remaining walls and finishes. Facility Services-Capital personnel currently working from Commons will move into the new addition in May of 2016 after the phase II construction is completed.



Inside this Issue:

McCluskey Addition	1
From the Associate VP for Facilities Ser- vices, Olivia Yang	2
PACCAR Building	3
Kudos	4-5
Scholarship Deadline	5
Safety Question Winner	5
Answers to Safety Question	5
Vehicle Accident Reporting	6
Storm Damage	7
Water	8
New Hires	9
Promotions	9
Service Awards	10-12
Thanks for Working Safely!!	12
APP Safety Question Contest	13
Design the Safety T-Shirt!	13
WSU Holidays	13

Mark Your Calendars!

Retirement Party for
Terry Ryan

Thurs/December 17th

3:00-5:00pm

McCluskey reception
area

From the Associate Vice President for Facilities Services...Olivia Yang

2015
2013

2015 will be remembered as a year of change for Washington State University.

Vice President Roger Patterson announced his retirement in May. We mourned the loss of University President Elson S. Floyd in late June. Change can sometimes lead to anxiety. In Facilities Services, we chose to embrace change as new opportunities to continue the upward trajectory of service and accomplishment.

Some of the many accomplishments this year include:

- Bringing AiM on board with improved processing of work orders and new functionality for project management .
- Consolidating Maintenance and Construction crews to create greater efficiency in how we deliver service.
- Moving people from Commons to McCluskey to facilitate collaboration and teamwork.
- Leading the new Capital Budget Planning Process to encourage greater collaboration across the University in Capital budget requests.
- Updating and implementing our WSU Design and Construction Standards and Guidelines.
- Training senior Facility Liaisons from all Colleges, Athletics, and Housing and Dining to develop common expectations for project delivery procedures and standards.
- Changing to the Project Management Fee process which improves transparency of project expense and more appropriately allocates preservation funds.
- Reorganizing the Administration group for more efficiency and improved customer service.

I also recall several utilities outages this year, including the water main break at the New Year and the power outage after Veterans' Day. The impacts to the campus could have been very disruptive but for

the enormous effort and round the clock work by you.

As 2015 draws to a close and we enter the holiday season, I want to take the time to thank each of you in helping to make this a tremendously successful year. What we did could not have been possible without your hard work. No matter what position you hold with Facilities Services, your efforts are part of a whole that the University depends on to keep the roads travelable, the grounds beautiful, the buildings functional and clean, and systems in good working order. With so many services, there is not a department or college on campus that can function without the services provided by the Facilities Services team. You make a difference every day.

I wish for each of you the best of the season. I hope you will have the opportunity to relax and enjoy the company of family and friends.

Happy Holidays and best wishes to you and yours for a happy, safe, and joyous season.

- Olivia



PACCAR Environmental Technology Building

-Jeff Lannigan



The College of Engineering and Architecture has named its newest building in recognition of PACCAR's major donation to the school. The new 96,000 square foot building, formerly known as "Clean Tech", located on Grimes Way, has been named the PACCAR* Environmental Technology Building. It will be the new home for faculty from engineering, the sciences, and allied fields to engage in cutting-edge interdisciplinary environmental technology research and education in the areas of renewable materials, sustainable infrastructure, water and air quality, and the environment, including the IDex design and collaboration studio and Composite Materials & Engineering Center (CMEC).

Groundbreaking took place on March 5, 2014, with the Design-Build team of LMN Architects and SKANSKA construction. The building is composed of offices, laboratory and research spaces, several conference/meeting spaces, and open graduate student work areas, as well as a seminar room and town square where students can mix and mingle. Furniture is currently being moved into the building, with faculty and staff moving their offices into the building starting over Thanksgiving break.

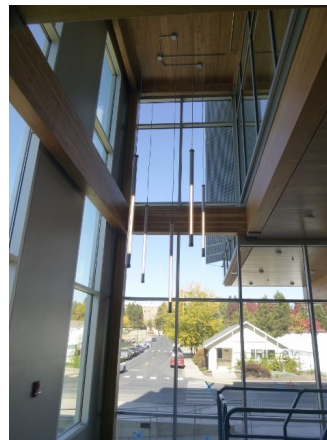
This building was designed to achieve LEED Gold certification with multiple systems incorporated to reduce environmental impact (permeable pavement, wood composite materials, skylights, open spaces and many windows). It will be the "greenest" laboratory building to date on WSU's Pullman campus, and serves as the cornerstone of a new engineering district on the east side of the Pullman campus.

Project Manager: Jeff Lannigan

Construction Manager: Brian Funke

Project Manager Intern: Jessica Brewer

*PACCAR is a Fortune 200 global technology company and a leader in the design, manufacture and customer support of premium light-, medium- and heavy-duty trucks under the Kenworth, Peterbilt and DAF nameplates. The company also provides financial services, information technology and aftermarket customer support. PACCAR is headquartered in Bellevue, Washington



KUDOS!!

As the process of finishing the Small Grain Plant Growth Facility nears its end, we want to especially commend the work done by Jason Baerlocher and Jason Harper. Jason Baerlocher has been a real trooper; responsible, responsive, a great communicator, with high attention to detail. Jason Harper moved the process along quickly. He has a good attitude, is a problem solver, and was a valuable interface between the construction team and the WSU oversight process. Overall, we have been impressed with the high level of efficiency and professionalism shown by both Jasons and by the rest of the Facilities personnel involved in this project.

R. Mittlehammer

Sincere thanks to Arron McCullen, Scott Smith and Joe Semler who stayed late on Friday, October 16, to clean in the College of Vet Med in preparation for the RDAA. I truly appreciate all of their efforts, going above and beyond to ensure our event was perfect! The student lounge looked beautiful and I know they assisted in the setup with the caterer, which I am thankful for! Thanks again!!

A. Burton

We are SO HAPPY with the job Jonathan Williams, Kevin Taylor, Tammy Kelly and Angie Wilbur did for us. Thanks so much for going the extra mile in helping us plan out the three days your crew was in our work area. It allowed us to clear most of the floors....and our work area has NEVER looked better. And it was fun to reconnect with Jonathon from years ago when he (and I) were much younger!!! Keep up the good work. You and your team have a thankless job....but you contribute SO MUCH to the look and feel of our campus. Thanks!

R. Scott

Thank you, Tammy Kelly and Angie Wilbur. The carpeting looks great! We appreciate your help!

D. Hamilton

Just want to say a big, THANK YOU! To Alysha Andres and Arron McMullen for getting McCoy 5 cleaned and ready for use. Your efforts are very much appreciated!

K. Dahmen

Thank you, Rich Miller, for repairing the blind in Thompson 309-H. We really appreciate it!

F. Meserve

Thank you to Brett Rode! He was excellent in dispatching the bins and several boxes. He packed the bins full, was very helpful and courteous. Until we find another hidden storeroom, thanks again, and have a great day!

M. Petrusky

On Tuesday October 27, 2015, the Alumni Center Staff recognized Melissa Tholstrup for the outstanding custodial service she provides to the Alumni Center. They had a surprise reception for Melissa where they presented her with a flowers, a gift bag and an Adopted Cougar certificate.



Greg Streva,

On behalf of the Palouse Basin Water Summit Planning Committee, thank you for your support, and helping make our 2015 Summit a great success! Feedback has been very positive, and we continue to be encouraged by the level of engagement we see from our elected officials, business leaders and community members. We are also very fortunate to have people like you helping us inform and improve the water dialogue here on the Palouse. Best Wishes and continued success. Thank you,

P. Kimmell and J. Kimberling

The sinks in the kitchen areas are spotless (we can almost see our reflection)!!! The dust bunnies on the back staircase are no longer there. The bathrooms are clean every day! Can we keep him? Please!!!

WE LOVE GEOFFREY GONZALES!

J.Hedenstrom

Just wanted to let you know that the work Geoffrey is doing here in Commons is noticed, is excellent, and greatly appreciated. Makes me want to stay here!

R. Small

Jonathan Williams and Kevin Taylor, thanks so much for cleaning my office carpet. Looks so nice!!!!

C. Boyan

Adam Beck,

You will be missed by all, and your hard work has been appreciated over the years. You raised the bar and took great care of us. A BIG THANK YOU to you, and congratulations on your new position. We're glad you are staying at WSU. We are better because of good people like you! We'll miss you!

All the tenants at the WSU Res/Tech Park

Dear Larry Grassmick and Friends,

Thank you so much for all your assistance through the year! We could not have done it without you! Wishing you and your loved ones a very Happy Thanksgiving, Christmas and all other celebrations. Happy New Year!

Sincerely, Rani

More Kudos!!

Huge thank you to Tammy Kelly, Angie Wilbur, Alysha Andres, and Arron McMullen, who were involved in my lab cleaning. I am thrilled! It looks absolutely amazing!!!! I can't believe it is the same lab!!! I would like to thank all because they did such a great job!!! I know it was a lot of work and also it was done very fast so, Thanks a Ton! Macarena

Kudos to Annie Pinard and Jann Dahmen who volunteered to pick up branches around their building after the big wind storm last night. Thanks to service beyond the call of duty and for being excellent Facilities Services team players!

K. Brun

Many thanks to everyone who has worked on restoring the "zen stairwell". It has been a serious nuisance for too long, one that continually disrupted classes and activities on the 7th floor of the Fine Art Building. I am greatly appreciative that it has finally been cleaned up, and that our building will be safer for it. Please let your crew know that their hard work is appreciated!

K. Haas

Scholarship Deadline is Approaching!



Do you have a dependent child or grandchild that will be attending WSU in the 2016-17 Academic Year as a freshman, sophomore, junior, or senior? If so, now is the time for them to apply for WSU Scholarships which includes the Facilities Services Scholarship. The scholarship application is located at: <http://www.finaid.wsu.edu/scholarships>

(If you know of a student that will be applying and you haven't already, please send their name to me at lorriea@wsu.edu or 335-9024 so I may ask the Scholarship Office to watch for their application.)

January 31, 2016 is the deadline for completing the scholarship application.

APP Safety Question Winner!



Rick Fox is the Winner!

We had 18 submittals. 16 were correctly answered. Rick's entry for the Safety Question was randomly selected from the correct entries. Those correct entries not chosen will be placed in the bucket for the annual Safety Award Drawing at the 2016 Facilities Services Picnic.

Congratulations Rick!



Answer to the October APP question:

Air quality information for Washington State is available on the State of Washington Dept of Health website at:

<https://www.doh.wa.communityandenvironment/airqualitysmokefromfires>

New Vehicle Accident Reporting Requirements - Dennis Rovetto

Washington State Office of Risk Management is now requiring use of an on-line reporting system. This is a new change. The protocol sent out by our own Risk Management department is as follows:



New Vehicle Accident Reporting Procedures

Washington State's Office of Risk Management now requires use of their on-line State Employee Vehicle Collision Report Form (SF137). Link to this form is:

<https://etort.des.wa.gov/incidentreport>. Use of this form is effective from here forward.

Please continue to stock the paper version of the SF137 in your vehicle glove boxes. Drivers can use this form as a template for capturing necessary information, as the automated report requires the same data.

Drivers are required to print a PDF copy of the on-line report and provide it to their supervisor.

Supervisors will forward a PDF copy to the WSU Office of Risk Management Services via email to:

pamerrywx@wsu.edu

The State's Administrative and Accounting Manual, Chapter 12, Transportation, and WSU Safety Policies and Procedure Manual 7.20, Motor Vehicle Accidents, requires all traffic accidents be reported within 48 hours, regardless of how minor.

If a law enforcement officer does not respond to a vehicle accident, it is the driver's responsibility to complete the SF161 form on line, or print and mail the form to WSP, per instructions attached to the form ([RCW 46.52.030](#).) This form is only required when the estimated damage to any one vehicle is \$700 or more, OR there is an injured party.* If neither of these conditions is met, then the form need not be completed. In any case, WSU Risk Management Services (RMS) does not need a copy of it.

This is the link to the SF161 <http://www.wsp.wa.gov/publications/collision.htm#citz>. Look for the Citizens Reports choice in the right hand column. If you have any questions about these procedures, or the form, please contact:

Pam Merryweather
WSU Office of Risk Management Services
(509) 335-3682, pamerrywx@wsu.edu

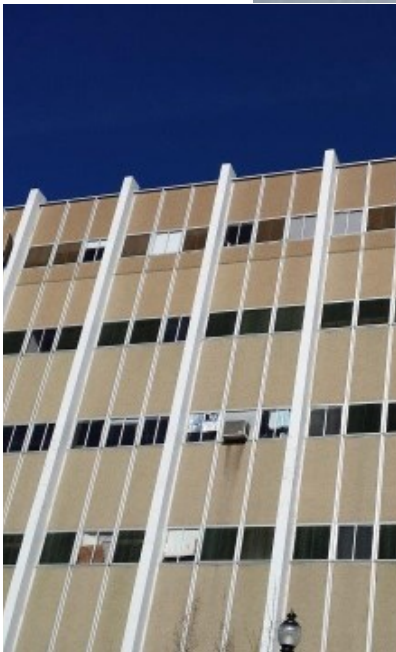
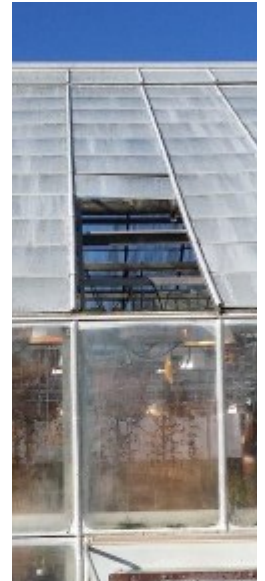
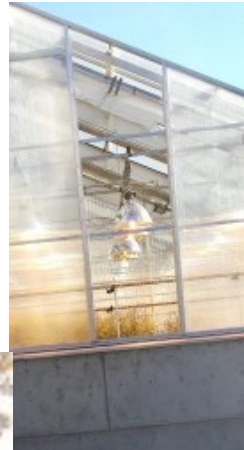
**Since all vehicles in the Facilities Services division are under the care and control of Motor Pool, we still require the written copy that is in your glove box to be completed every time there is any damage to a vehicle. It is the only sure way we have to submit all claims and it is essential to our record keeping system. If we do not get the accident report turned in, we do not get the damage covered by the insurance we have already paid for. That leaves your department budget to pay for the damage.*



Please, always fill out the accident form in the glove box. It will come in very handy when you do the on-line form and it makes it possible for us to recover the cost of repairs. Thank you!!

Storm Damage - November 17-18, 2015

Photos courtesy Annette Barton and Bob Hubner



Water, Where Does it Come From? - Greg Streva



When you fill your sports bottle from one of the drinking fountains on campus, I bet you don't spend much time thinking about where the water came from. WSU, U of I, Pullman and Moscow all pump water from the Grand Ronde aquifer deep under the Palouse basin. Our deepest well is almost 2000 feet deep. We use this water for everything on campus, including drinking water, lab water, fire protection and irrigation. In 2014, WSU pumped 464 million gallons of water from the aquifer. This may sound like a lot of water to you, and it is, but compared to the 2.45 billion gallons that all the entities pumped in 2014, WSU's numbers are fairly conservative.

The cities and universities have been taking water from the aquifer since the 1800s. It was around the turn of the century that the locals realized that the water levels were declining. It didn't become a big concern to the locals until a population boom in the 1950s made the decline more serious. In 1967, the concern over the declining water levels led to the formation of the Pullman-Moscow Water Resource Committee. The charge of this group was to make recommendations to administrators and elected officials on how to best ensure a safe, plentiful water supply for the basin.

Today, that group has evolved into the

Palouse Basin Aquifer Committee. WSU still is an active participant in the group that now includes Whitman and Latah Counties.

The biggest concern that has troubled the group over the years is that the aquifer doesn't appear to be recharging. For over 70 years, the water levels have been on a steady decline of 1.0 to 1.5 feet per year. The bottom line is if these trends continue, it's pretty clear that someday we will run out of water.

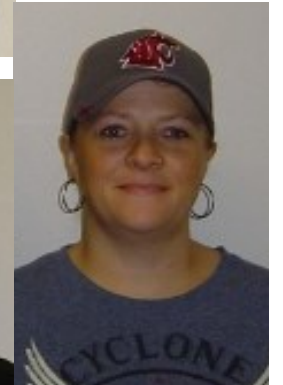
Is there a light at the end of this dark tunnel? I think there is. Recent measurements indicate that the current water levels are only declining about six inches per year. This can be attributed to water conservation efforts taken by the cities and universities. In 1990, WSU pumped over 600 million gallons of water. Compare that to the 464 million gallons pumped in 2014 and the effort we have put into conserving water becomes very clear.

We have done a lot, but our work is not done, and it won't be until we have a sustainable water supply. Water conservation is everyone's responsibility. Please be aware and do your part.



New Hires

Welcome!

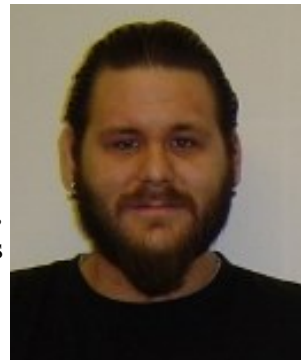


Refrigeration Maintenance, John Wilson (second from left).

New Custodians: Vince Gordon (third from left), Roman Guzman, Ashley Tucker, Brittney Cox, Taylor Bartlett, and Preston Moore.

Pictured with AVP Joe Kline at left.

Inset: Becky Reiber, Dispatch (top), Kevin Taylor and Tammy Kelly, both new custodians



Promotions



L-R: AVP Joe Kline; Director Custodial Services, Tom Parrish; **Adam Beck promoted to Custodian 3;** **Abigale Walser promoted to Custodian 3,** and Custodial Supervisor, Rebecca (Rocky) Beach

Inset: Isaac Simmons, promoted to Custodian 3.



Congrats!

10 Year Service Awards



10 year Service Award Winners: **Kyle Davis**, Custodial; **Kelly Cornish**, Fin/Admn; **Pat Strong**, Custodial. Flanked by: (L-R) AVP Joe Kline; Director of Fin/Admn Kate Kamerrer; Custodial Director, Tom Parrish; Custodial Supervisors, Perry Berger and Danna Medlock.

15 Year Service Awards



15 year Service Award Winners: (L-R) **Terry Ryan**, Energy Director; **Jeff Lannigan**, Project Manager; **Nancy Stephenson**, Project Manager/Interior Design; and **Chris Ayling**, Maintenance Mech 3. Flanked L-R by: AVP Dan Costello; AVP Joe Kline; Supr/Maint Spec 4. Ralph Webb; and Assoc Director Chris Fischer. Inset: **Brian Kriebel** (L), Custodian 3 with Supervisor, John Berney.

20 Year Service Award



20 year Service Award Winner: Duane King, Custodian Lead. Pictured with: (L-R) AVP Joe Kline; Supervisor, Vic Linderman; and Director of Custodial Services, Tom Parrish.

25 Year Service Awards — Quarter Century Club



25 year Service Award Winners: Angie Wilbur, Custodian Lead; **Vic Linderman**, Equipment Tech 4; Flanked (L-R) by: AVP Joe Kline; Custodial Supervisor, Bonnie Becker; Director of Custodial Services, Tom Parrish; and AVP Dan Costello.

30 Year Service Award



30 year Service Award Winners: Mike Nearing, Steam Plant Manager, and Debbie Hill, Plant Communications/Dispatch. Flanked L-R by: AVP Joe Kline; Energy Director, Terry Ryan; Assoc Director for Maintenance, Chris Fischer; Supervisor of Plant Communications, Aaron Cunningham; and AVP Dan Costello

Thanks for Working Safely!!



Rick Fox and Dean Standon

Thanks for Working Safely!!

Rick Fox and Dean Standon are Winners!

Rick and Dean showed exceptional safety in every part of the project of painting the "Zen Stairwell". They made sure that every thing from the material used as the coating, to equipment used in the application followed all procedures. They were careful to make sure Explosion Proof lights were installed, and additional exhausting was established.

Bill West provided this nomination.



Rick and Dean selected prizes from the Safety Award Cabinet. **Congratulations!**

Facilities Services Safety Committee

Safety Question Contest for the Month of December 2015

Directions: The answer to the question below can be found in one of the chapters of the Accident Prevention Program (APP). Read the question carefully. When you think you have found the answer, you may email your answer to **D Thomas at d.thomas@wsu.edu** or print off this page and cut out the form on the dotted lines. You may give the form to your supervisor to send in intercampus mail to D or drop it off at her desk in the reception area of the McCluskey Office building. The names of all employees who submit the correct answer will go into a hat for a drawing. Whoever's name is drawn will be able to pick out one of the monthly safety awards. This contest will be open only until 5 p.m. on **December 31, 2015** so get started finding the answer now and win a nice prize! <http://facops6/safety/APP%20Manual/Forms/AllItems.aspx>

APP Chapter 24: Hot Works

Areas not designated for hot work will require a _____. Before hot work operations begin in a non-designated area, a _____ shall be prepared by the employee and approved by the supervisor.

Name of employee submitting the above answer: _____

Facilities Services Division: _____

Design next year's Safety T-shirt!

The Safety Budget Subcommittee is holding a contest for Facilities Services employees to create a design for the **2016 Safety Picnic T-Shirt**. Put your creativity to work and show off your talent by designing the T-shirt that will be given out at the picnic next July. Submittals will be limited to 3 colors and will need to be turned into D Thomas at McCuskey's reception area by **January 31, 2016**. The employee with the winning design will be given a prize!! All designs will be posted on a board at the picnic for viewing.



WSU Holiday Schedule

Christmas	December 24 & 25, 2015	Independence Day	July 4, 2016
New Years Day	January 1, 2016	Labor Day	September 5, 2016
Martin Luther King Day	January 18, 2016	Veterans' Day	November 11, 2016
Memorial Day	May 30, 2016	Thanksgiving	November 24 & 25, 2016



WSUSURPLUS

Open to the public every Friday 10am-3pm



Find us on
Facebook

ebay

Public | Surplus

GovDeals
LIQUIDITY SERVICES MARKETPLACE

<http://surplus.wsu.edu>