



## Remembering President Floyd

### President Floyd



The Cougar Nation was saddened by the passing of Elson S. Floyd, PhD, President of WSU. Although he and his doctors had been optimistic, his return to WSU was not to be. He passed on June 20th.

A memorial is planned for Wednesday, August 26th, 3:00-5:00pm in the

Beasley Coliseum. The university community is invited to attend. It will also be streamed and viewable at Martin Stadium, the CUB Auditorium, and via the web.

Please work with your supervisor to arrange release time if you wish to attend.



### Inside this Issue:

From the Associate Vice President	2
Ensminger Pavilion	3
New Fuel Pumps	4
Service Awards	5
New Employees	7
Promotions	7
WSU Holidays	7
Bits & Bytes	8 & 9
Chiller Maintenance	10
Kudos	11
Thanks for Working Safe!	12
Safety Question Winner	13
Answers to Safety Question	13
APP Safety Question Contest	14

### Mark Your Calendars!

All Campus Picnic  
Friday, 8/21, 11-1:30  
Blood Mobile  
Thursday, 9/24



Thank you from the Associate Vice President!

The Facilities Services Picnic on July 9 was the most successful one we've had. The teamwork was very obvious. The event was well coordinated, well thought out, planned to a very fine level of detail, and executed to perfection. The energy, creativity, commitment and hard work displayed by those involved is greatly appreciated, not only by me but by all those who attended this year. Thank you to each of you individually, and collectively as a team, for your outstanding efforts. Job well done! - Olivia



## Update

*With the retirement of VP Roger Patterson, Associate Vice President, Olivia Yang, was asked to serve as Interim Vice President for Finance and Administration until that position can be filled. Additionally,*

*she is managing all of her Facilities Services duties. During this interim appointment, Olivia's office will be located in the French 442 Suite.*

*Lorrie Arrasmith has also moved with Olivia to the French Administration Building, Suite 442. Lorrie's phone number is 335-2600 or 335-9024. The main reception desk number is 335-5524 and is usually answered by Cindy Alred.*

## Moving In

More folks from the Commons building have moved into McCluskey, thanks to the great remodeling efforts of the Operations crew. Don Hulst and Bobbie Ryder have joined Charles Hemphill, Craig Boersema, Blair Myron, Bob Nichols, Miranda Ferry and Chuck Coen in offices on the north hallway facing Grimes Rd. Bill Vertrees and Jude Durfey have moved into the former offices of Olivia and Lorrie across from the reception desk. Dan Costello has moved into his new office across from the Dispatch Unit.



# Historic Cupola on Ensminger Pavilion—Seth Truscott, CAHNRS

and Mike Sturko, Facilities Services

Washington State University's Ensminger Pavilion, a former livestock-judging barn turned events center, gets an upgrade to its historic cupola this summer. The 1933 pavilion's aging wooden cupola and weathervane pennant will be renovated with modern materials. The \$13,000 project will wrap by autumn.



Last summer, when workers replaced Ensminger's roof, they noticed dry rot in the cupola. The university approved funding for a restoration that will match the look of Ensminger's historic cupola, but with modern materials. The top pennant will be replaced by a larger weathervane with crimson highlights.

In the 2002 restoration, contractors blasted off the original lead paint and added new metal siding. Old windows were replaced, and on the south wall, the former meat lab was removed, adding a bank of large doors and bringing the barn back to its original shape. Later, a concrete floor was added, and inside bleachers were moved and reduced. The college's Horticulture Club added attractive, decorative planters to the new entrance.

Prior to renovations in the early 2000s, the former Livestock Judging Pavilion was the oldest original building still used for its original purpose on the WSU campus. Designed by university architect Stanley Smith, who also designed the Smith Gym and White Hall, it was part of an agricultural complex that included the beef barn that became the Lewis Alumni Centre in the 1980s.

More than a classroom, the pavilion was a gathering place for farmers, ranchers and educators. Annual field days and Livestock Feeder's Days welcomed up to 800 people to the pavilion. Land Grant Day dances and auctions were held every autumn. Crooner Bing Crosby once attended a livestock judging event at the pavilion, when his sons studied at WSU in the early 1950s.

Dr. M.E. Ensminger, who was head of the animal sciences department at WSU from 1941 until 1962, welcomed farmers from across the country to the big Feeders' and Field Days. Everett Martin, a retired WSU animal sciences professor, who taught meat science from 1970 to 2006, was the last professor to hold classes inside the judging pavilion. Over the years, the pavilion aged and changed. By 2001, the pavilion's interior was beat up. Outside, it was covered in ugly, yellow lead paint. "It was considered an eyesore," said Pete Jacoby, a Crops and Soil Sciences professor and, at the time, associate dean of the then-College of Agriculture and Home Economics (CAHE). The university was leaning toward demolition, but some students and faculty had other ideas.

Thanks to the efforts of Martin, CAHE students and faculty, the campus historic preservation committee, and university administrators, in 2002 the pavilion was saved from demolition. Steve Mallory, the senior architect with WSU's Facilities Operations, worked with Martin, Jacoby and other staff on a plan to turn it into an events center, paired with Lewis Alumni Centre. Key funding came from Audrey Ensminger (Class of 1943), widow of Dr. Ensminger. Her memorial led to the building's new name, Ensminger Pavilion.



## Motor pool Gets New Fuel Pumps—Dennis Rovetto

Several years ago the Motor Pool did a fuel system upgrade that included new fuel line leak detection sensors, a new card reader system and all new system control hardware. Unfortunately, we did not have enough money to replace the dispensers at the fuel island. Last winter, around the beginning of January, one of the dispensers failed. It burned up its control board. We immediately set about ordering a new one. Guess what...our dispensers were so old that no parts were available.

Our parts coordinator, Mike Morbeck, quickly contacted our fuel vendor, 4 Star Supply, and had them bring a small fuel truck on site so we could keep all of campus diesel vehicles running. Even though we had a light winter, we had plenty of cold and wind which makes for icy conditions, so all of our snow removal rigs were still running. The campus waste stream flows never stops either, so all of the waste management vehicles were still running, too. Our Motor pool staff all took turns dispensing fuel out of the tanker truck. Boy was it cold outside doing that!



Meanwhile, Mike Morbeck had a fuel dispenser vendor make us a new control board for our dispenser. It took a couple of weeks. When it was installed, it immediately burned up again. We ordered another board and I called in our electricians, Tom Moore and Todd Andrews. They found a problem with the power feed and fixed it. When our new board arrived and was installed, we finally had diesel at the pump again. This whole problem lasted almost six weeks. By the time it was over, we had all promised we would make replacing those old dispensers our highest priority.

Before we were able to accumulate enough money to try to buy new dispensers, Dr. Floyd came out to the fuel station to get fuel. One of the pumps failed to operate for him, so one of our mechanics, Eric Lynch went up to assist him. Dr. Floyd inquired about our antique pumps. Before long, our budget received an infusion, and we were able to place our order for new dispensers right away, and on State Contract!

The project has come to a close and other than a couple of last minute issues we look forward to offering our campus customers a better fueling experience with our new dispensers. The new dispensers also have a slightly different design and the diesel can be used from the Grimes street side "ONLY" on the fueling island.

Here are a few tips to make everyone's fueling experience go smoother:

**DO:.....**Swipe your fuel card reader box first, and enter your vehicle information and mileage

.....Open the fuel door (on cars) and remove fuel cap

.....Remove nozzle from dispense (pump) and flip handle to "on" position.

.....Place nozzle in fuel tank opening and depress the nozzle trigger to begin dispensing.

**DON'T:.....**Remove fuel nozzle and place in fuel opening "before" you have swiped your card!

.....Place nozzle in opening and lock handle before pump handle is in "on" position.

....."Pump" the fuel handle lever to hurry the dispenser.

**AND....DO NOT USE CELL PHONE WHILE FUELING VEHICLES OR EQUIPMENT!**



# SERVICE AWARDS



**5 Years**  
**Blaine McMahan**



**5 Years**  
**Scotty Nelson**



**10 Years**  
**Fred Cook**



**10 Years**  
**Bonnie VanAllen**



**15 Years**  
**Kellie Breeze**



**20 Years**  
**Sandra McCollum**

## Service Awards



Service Awards not pictured:

Den Bowker—15 years

Russel Knight—15 years

### Motor pool Gets New Fuel Pumps (continued from page 4)

Customers that try to hurry the process usually trip the dispenser off and the Motor Pool front office is then required to bring up the fuel program and reset the dispenser. Also, by locking the fuel nozzle lever open before the dispenser has been activated and has reset itself makes it “sense” a possible leak in the system which makes it trip off or run real slow. Ever notice that sometimes the diesel dispenser runs a small trickle of fuel rather than a full nozzle full of fuel? When the nozzle lever is opened before the dispenser is reset, air may get in the fuel hose and the dispenser immediately senses a pressure variation and starts searching for it. It may either just run a trickle or it may kick itself off.

We ask everyone to take your time when fueling your vehicles and follow the procedures and it will actually make your fueling experience go much faster and smoother and be easier on you and all the folks waiting in line behind you!

We hope our new dispensers treat everyone well and that they do not give us the trouble we have been experiencing with our antique ones.

Thank you, Dennis



# WSU SURPLUS

Open to the public every Friday 10am-3pm



Find us on  
Facebook



Public | Surplus



GovDeals  
A LIQUIDITY SERVICES MARKETPLACE

<http://surplus.wsu.edu>

## WELCOME NEW EMPLOYEES!



**Welcome!**

L-R: Robert Allen, HE Op-2; Benjamin Stepper, Warehouse Op-2; Rob Croyle, Mgmt. Analyst-1; Jackie Hedenstrom, Contracts Assistant; Craig Lowman, Fiscal Tech-3; Staci Hamburg, Fiscal Tech-3; Alfred Sanchez III, Proj Mgr-1; Victor Edenso, Painter; Pictured with Dan Costello, AVP Facilities Services, Operations.

## Promotion!

**Great Job!**



Clockwise from lower left:

Blain McMahan, CM-1 (Joe Kline);

Danna Medlock, Custodian 4 (Tom Parrish);

Randy Ludiker, Custodian 4 (Tom Parrish);

Bill West, Paint/Sign Shop MME; (Craig Cole and Jeremy Griffin);

Jarod Taylor, Waste Collector (Rick Finch)



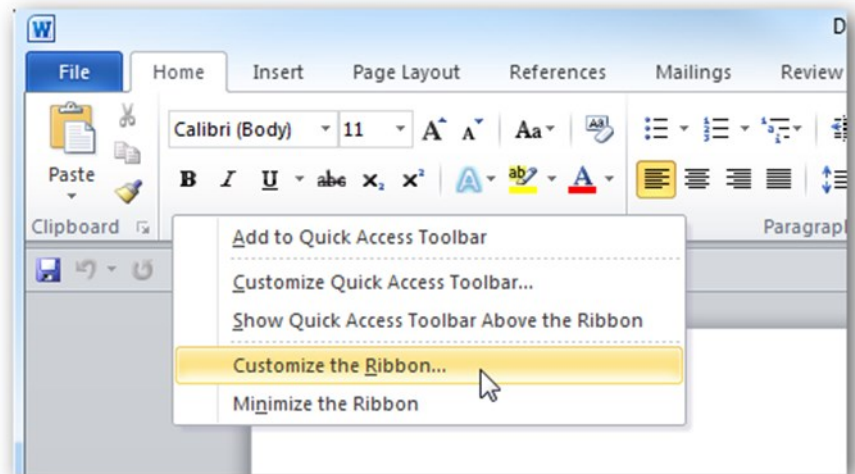
## WSU Holiday Schedule

Labor Day	September 7, 2015	New Years Day	January 1, 2016
Veterans Day	November 11, 2015	Martin Luther King Day	January 18, 2016
Thanksgiving	November 26-27, 2015	Memorial Day	May 30, 2016
Christmas	December 24 & 25, 2015	Independence Day	July 4, 2016

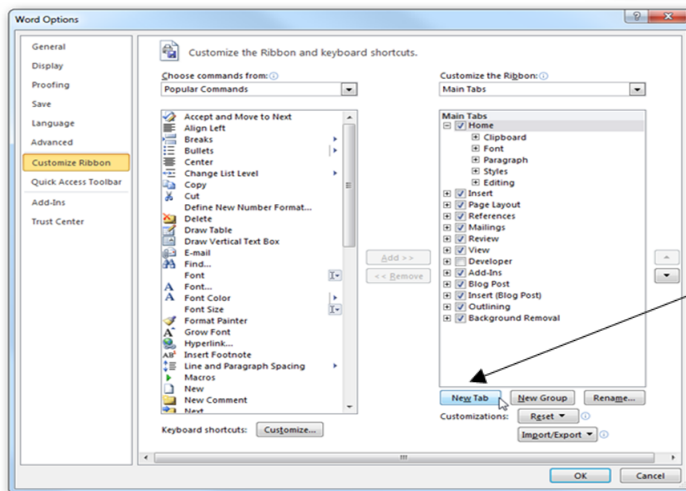


### Create a Customized Tab on the Office 2010 Ribbon

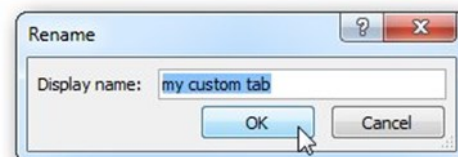
In this example, I'm using Word, but you can create a custom tab in the other Office apps as well. To do so, right-click on the Ribbon and select Customize the Ribbon.



The Word Options screen opens up and from here you can manage a lot of customization options.



To create a new customized tab, click on the New Tab button.

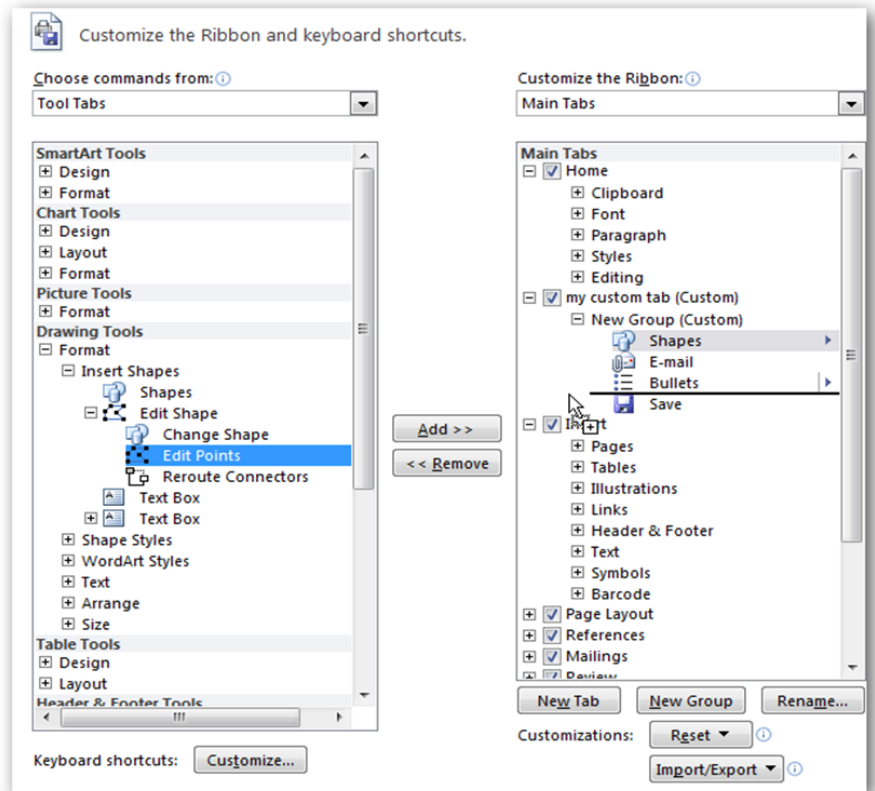


Give the new custom tab a name...

Now just drag the commands you want to add from the left column over to your new custom group.

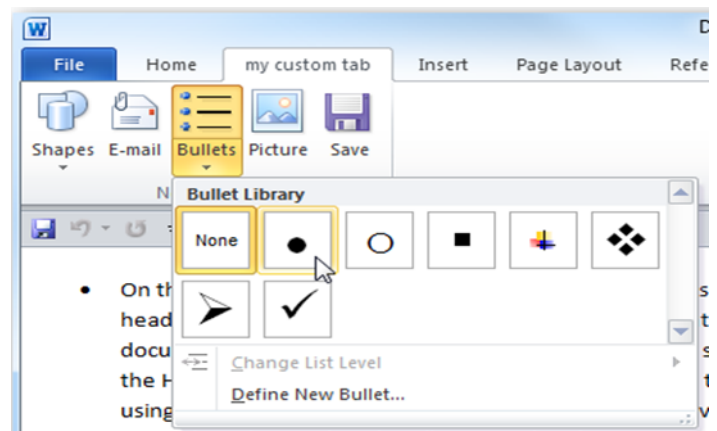


You have every command available to choose from. You can select specific groups or all commands from the dropdown menu on the left.



That is all there is to it...now you have your own customized tab with the commands you use most often to help you work more efficiently. In this example I didn't add a whole lot of commands, but you can customize it with as many as you need. You can also create other tabs with different sets of commands too.

When you create a customized tab in one application, it's only going to be in that app. For example if you create one in Word, it's not going to show in Excel as commands differ between apps. If you want a custom tab in another Office app you'll need to create one for it.



## Yearly Chiller Maintenance—Tom Burritt

Here at WSU, the cooling season comes to an end every year in early to mid October. Once the chillers are not utilized for air conditioning during the summer and early fall, the refrigeration shop begins the long process of chiller maintenance, which ensures the chillers and cooling towers are prepared for winter hibernation and ready to go in the spring.

Rich Kramlich and Brandon Goucher are the expert condenser cleaning duo. On each machine, the condenser tube headers are opened up, inspected and cleaned. The condenser tubes on all eight of the main loop chillers are cleaned by running a brush attached to a pressure washer the length of each tube to remove dirt and scale, which accumulates over the course of the summer.

The chilled water loop provides air conditioning and process cooling for research equipment

chilled water storage tank to maintain the campus needs. These chillers range in size from 400 tons up to 2000 tons. The cleaning process takes up to one week per machine.

WSU has three chiller plants across the campus. The west chiller plant has two 1500 ton chillers and one 2000 ton chiller, Clark Hall has two 1500 ton chillers, and the new east chiller plant has two 15 ton chillers. All of the chillers connect to a piping system under ground that range from twelve inch pipe up to twenty-four inch pipe and loops around the campus.

SCUE has a 400 ton chiller that provides cooling during the winter and light load days while the large machines are down for maintenance. In the spring, after the large machines are up and back in service, the SCUE chiller will be shut down and cleaned.



throughout the year for all of the universities research facilities, computer and academic buildings. The chillers provide approximately 12,000 tons of cooling along with a two million gallon



## KUDOS

The floors (Morrow and Jackson) are looking great! Your crew (Tyler LaVoie, Isaac Simmons, Angie Wilbur ) are doing an awesome job!

L. McCall

I wanted to let you know how much we appreciate your team's (David Pearson, Murton Kinslow, Geoffrey Gonzales, Alysha Andres, and Arron McMullen) response to the broken pipe in Wegner 231 this morning. I always appreciate the quiet efficiency Geoffrey has in our building, but it's quite impressive to see how quickly you all escalate a response to an emergency like we had earlier today. Getting the water up quickly was a key point of salvaging what we can. Thank you. B. Schmuck

You're the best (Craig Gray). We recognize and appreciate excellent customer service!

K. Brimhall

Thank you very much Jeremy! Your shop is awesome! (referring to painting project performed by Bill West).

A. Barton

I wanted to bring to your attention that the guys working in the lock/key shop have been doing a GREAT job. In preparation for our AAALAC inspection, Kelley Kirpes and Riley Gale have been working on some of the door sweeps in BLS. They were great about communicating with me for vivarium access during the work phase. They have also contacted me when they had a scheduling problem and could not make it. With some of our sweeps they figured out a way of modifying them to get them to function better. It is much appreciated.

G. Gorence

Please pass along my thanks to the team (Angie Wilbur and Jonathan Williams) that cleaned our carpets in Vet Biomed 205/207 on Friday 7/31. They look wonderful!!

Also thank you to Glen Moulton for the wonderful job you did on our workroom floor in VBR 205. It is gorgeous! I appreciate your efforts to get it looking good again and for being part of the IPN team!

B. Morton

I would like to recognize Rick West from the paint shop for his fine work here (Cleveland 321). He works diligently between the different offices and departments, is respectful to all who work here, is quiet as a mouse, and awesome! Thank you for hiring him!

P. Rose

Thanks so much for your special consideration and support in getting ADBF 1002 University Classroom floors and table tops cleaned up so nicely this morning along with the vacuuming and spot cleaning of the carpet. The classroom looks great! This will be the princi-

pal classroom that will be used by the American Association of Veterinary Anatomists (AAVA) conference that is being hosted by WSU CVM. We really appreciate this support! Thanks to all of you (Joe Semler, Arron McMullen and David Pearson) and the outstanding Facilities Services Custodial staff that supports the WSU Community!

M. Malcolm

Academic Media Services told us how nice the walls in Sharon Stout's classrooms looked. Sharon had been cleaning them last week.

R. Beach

I would like to thank Dave Stodick and Jason Brausen for disassembling office furniture for us in preparation of the heavy equipment team and painter coming to do their part in readying an office space for Matt Skinner our new Associate Vice President of Finance. They worked in a timely manner enabling the heavy equipment team to come in and complete their part. These two employees were friendly and professional. Thank you!

Thank you to Ian Allen, Steve Cottrill and Josh Emerson for removing office furniture and relocating it for us as we prepared an office space for Matt Skinner our new Associate Vice President of Finance. We soon learned that the new location wouldn't accommodate all the furniture as planned. The guys were very patient as pieces had to be placed and moved again. I appreciate their ability to work well together to get the job done.

Rick West had a challenge (or so we thought) the day he showed up to patch and paint an office for our department. It was necessary for him to patch the length of one wall where a shelf had been siliconed to it. Those of us in the department were wondering if the drywall would have to be replaced. To our surprise and relief Rick took one look at the wall and said, "Oh I can fix this." With Rick's careful, yet mastered skill, he was able to repair the damage and once painted no one can tell where the damage had been. Thank you Rick for an amazing job.

C Alred

KUDOS to the heavy equip group for providing a common sense solution and good customer service for a commorative bench installation!

R Salvadalena



## Thanks for Working Safely!

ERIC SORENSON IS THE WINNER!  
"Thanks for Working Safely!"



Eric was observed wearing the appropriate PPE while pouring concrete on Fairview Lane.

## APP Safety Question Winners! (Names were Drawn at the Annual Facilities Services Summer Picnic)

Todd Komp- Safety Trivia Question- George Foreman Grill

Signe Stolz- Safety Trivia Question- Black and Decker Bits and Work Lights

Trevor Peterson- Safety Trivia Question- Outdoor BBQ Set

Paula Beck- Safety/APP- Lawn Chair

Mark Grant- Safety/APP- Cooler

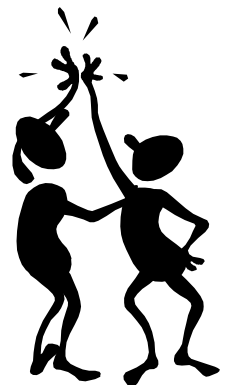
Corrina Johnson- Safety/APP- Walkie Talkies

Keith Davison- Safety/APP- Black and Decker Bits and Work Lights

Lance Mitchell- Safety/APP- 4 Football Tickets (Donated by Cougar Athletics)

Scotty Nelson- Safety/APP- 4 Football Tickets (Donated by Cougar Athletics)

Eric Sorenson- Safety/APP- Bluetooth Speakers



**Congratulations to June's Safety Question Winner:  
Norman Fung**

June's Question—Chapter 35 Laboratory Safety. This is a two part question:

1) Specific procedures for Maintenance/ Construction in Laboratories are outlined in \_\_\_\_\_.

2) Operating Procedures for Providing Custodial Services in Laboratories include what 7 possible problems (list the possible problems): \_\_\_\_\_

\_\_\_\_\_  
\_\_\_\_\_  
\_\_\_\_\_

\_\_\_\_\_  
\_\_\_\_\_  
\_\_\_\_\_

**Norman Fung is the Winner!**

Norman's entry for the Safety Question was randomly selected from the total entries all correctly answered. Those correct entries not chosen will be placed in the bucket for the annual Safety Award Drawing at the 2016 Facilities Services Picnic.

**Congratulations Norman!**

Thank you to all that entered the contest!  
Be sure to enter this month's contest!!



## Answers to the June Safety Question

Question: APP chapter 35 Laboratory Safety....this is a two part question:

1. Specific procedures for Maintenance/Construction in laboratories are outlined in the:  
Appendix N of the Laboratory Safety Manual
2. Operating procedures for providing Custodial Services in laboratories include these seven (7) possible problems:
  - A. Working in laboratories
  - B. Radioactive materials
  - C. Biohazards
  - D. Animal Remains in trash
  - E. Sharp Items (needles and scalpels)
  - F. Glass policy
  - G. Water and spills in labs

## Facilities Services Safety Committee

### Safety Question Contest for the Month of August 2015

**Directions:** The answer to the question below can be found in one of the chapters of the Accident Prevention Program (APP). Read the question carefully. When you think you have found the answer, you may email your answer to Jude Durfey at [jkdurfey@wsu.edu](mailto:jkdurfey@wsu.edu) or print off this page and cut out the form on the dotted lines. You may give the form to your supervisor to send in intercampus mail to Jude or drop it off at her desk in room 103 of McCluskey Office building. The names of all employees who submit the correct answer will go into a hat for a drawing. Whoever's name is drawn will be able to pick out one of the monthly safety awards. This contest will be open only until 5 p.m. on **August 31, 2015**, so get started finding the answer now and win a nice prize!  
<http://facops6/safety/APP%20Manual/Forms/AllItems.aspx>

#### Chapter 6: Safety and Health Training

Safety training will be provided to all employees

\_\_\_\_\_ to assigning the employee to work which  
may have potential \_\_\_\_\_ .

Name of employee submitting the above answer: \_\_\_\_\_

Facilities Services Division: \_\_\_\_\_

# Mark Your Calendars

**This Friday, August 21, 11:00-1:30 All Campus Picnic**

Location: NE Fairway Road outside of Beasley Coliseum

As in the past, employees are allowed an additional hour to their regular lunch break to attend the picnic, and you must show your WSU ID to be able to eat for free.

(We still need volunteers for the Recycling Stations .....

contact Lorrie Arrasmith at [lorriea@wsu.edu](mailto:lorriea@wsu.edu) or 335-2600



**The Blood Mobile is coming !!! Thursday, September 24**

Sign up with our volunteer recruiters: .....

Jann Dahmen 335-5571 Brandy Dean 335-4530 Debbie Hill 335-9000 Jessica Plummer 335-9308  
Josh Graisy 335-9085 D. Thomas 335-9846

The Blood Mobile will be parked across the street from McCluskey in the Housing loading dock area along the curb by the trees. Donors check-in directly with the crew on the bus.

