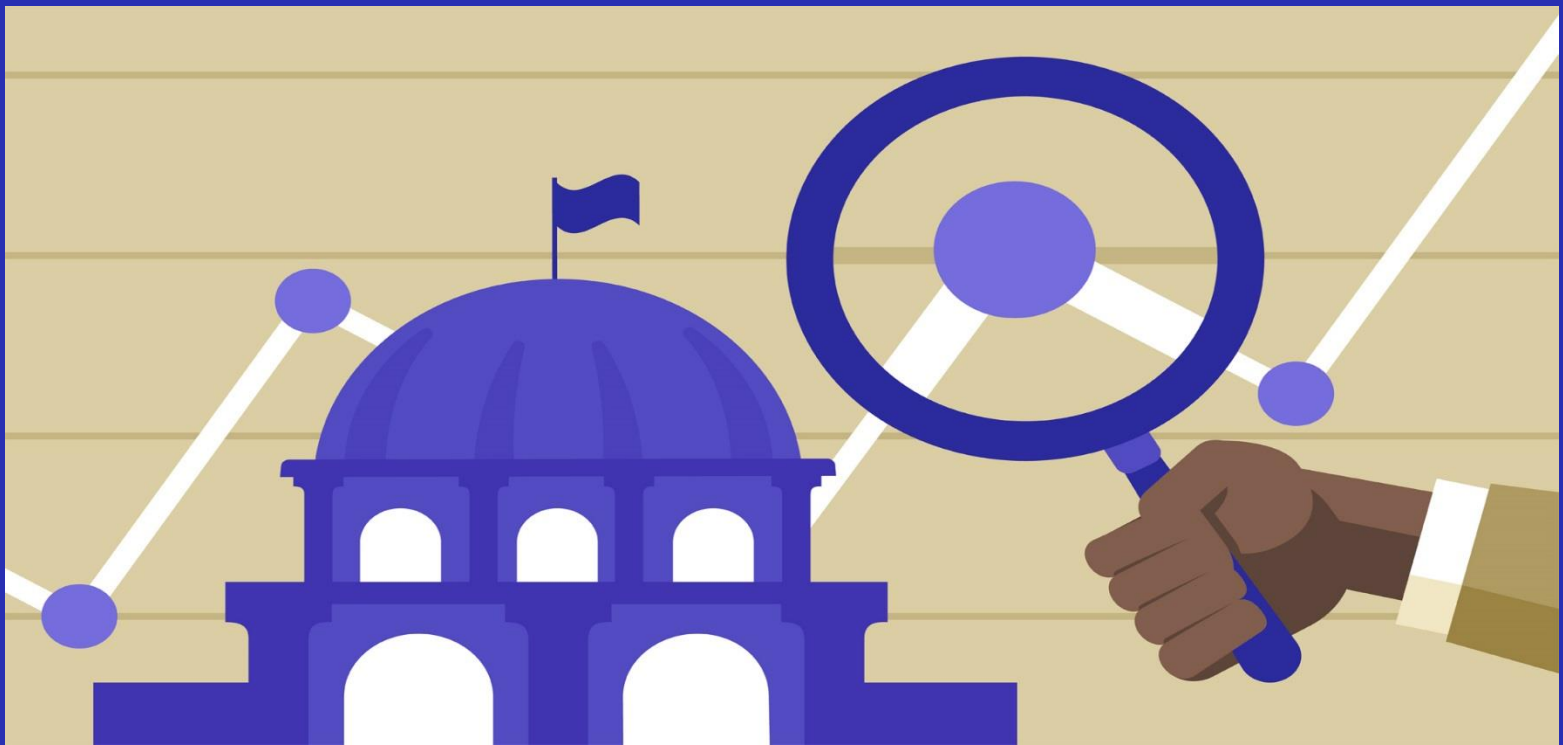




Coffee & Politics Series

Blue wave for Washington?

Polling the midterms



Wednesday September 19 | 12:00 p.m.
Foley Speaker's Room | 308 Bryan Hall



What is likely to happen in the elections in November? Tight races across the state could be important for who will control the U.S. House of Representatives.

Stuart Elway, the founder and owner of Elway Research Inc. will provide his take on some of the data from races across Washington with national implications. The Elway Poll is rated as one of the top 6 election pollsters in the United States, with an "A+" grade from fivethirtyeight.com.