

Recognizing Walnut Husk Fly *Rhagoletis completa*

Fruit Pest Management Tips

The walnut husk fly is the key pest of walnuts in the PNW. The immature maggot feeds in the husk and rarely affects the nut quality, but makes it difficult and messy to separate the husk from the nuts.



Photo by H. Vander Houwen



Walnut husk fly are monitored with commercial yellow sticky traps baited with lures. Traps out by early July and fly activity continues into October. These flies are about 1/5" long and have a distinct banding pattern on the wings.



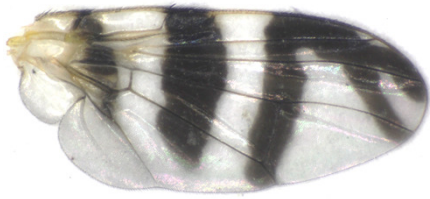
Walnut husks infested with these maggots will develop a dark brown to black discoloration and the damaged husk sticks to the shells. Maggots will leave husk and pupate in the soil after walnut drops to the ground.



The translucent white maggot is legless without a head capsule, but with visible mouth hooks at the head end and, at maturity, measures 8 mm or 1/3 inch long.

Fruit Fly Wing Patterns

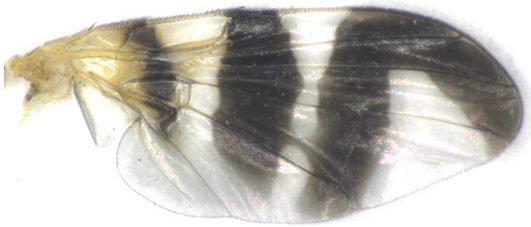
of flies commonly found in PNW tree fruits



Western Cherry Fruit Fly
Rhagoletis indifferens
Wing size = 3.5 mm (0.14 inch)



Apple Maggot Fly
Rhagoletis pomonella
Wing size = 4.1 mm (0.16 inch)



Walnut Husk Fly
Rhagoletis completa
Wing size = 4.3 mm (0.17 inch)



Snowberry Maggot Fly
Rhagoletis zephyria
Wing size = 3.5 mm (0.14 inch)

Management:

- Regularly updated WSU recommendations on pest management of walnut husk fly can be found on line at these websites:

For homeowners-

- WSU Extension Hortsense at <http://hortsense.cahnrs.wsu.edu/Home/HortsenseHome.aspx>
- Pacific Northwest Insect Management Handbook <https://pnwhandbooks.org/insect/nut/walnut/walnut-walnut-husk-fly>

For commercial producers

- Pacific Northwest Insect Management Handbook <https://pnwhandbooks.org/insect/nut/walnut/walnut-walnut-husk-fly>

Contributors-

Mike Tobin, No. Yakima Conservation Service
Dr. Wee Yee, USDA-ARS Wapato
Jeff Upton, Yakima Co Hort Pest & Disease Board
Dr. Mike Bush, WSU Extension- Yakima County



Product names have been used to simplify information; no endorsement is intended. Always read the pesticide label before purchasing and applying pesticide products. WSU Extension programs and employment are available to all without discrimination. Evidence of noncompliance may be reported through you local Extension office. Copies of this document may be available at the WSU Yakima County Extension Office, call 509-574-1600. Created September 2017