

SIGNS AND SYMPTOMS OF PHYTOPATHOGENIC FUNGUS AND BACTERIA



Leaf Spot

Fungal

Circular, concentric rings
Not limited by veins

Bacterial

Angular spots
Limited by veins



Fungal Leaf Spot



Bacterial Leaf Spot

Symptom or Sign	Fungal Leaf Spots	Bacterial Leaf Spots
-----------------	-------------------	----------------------

Water-soaking	Uncommon	Common
Odor	Uncommon	Common
Color Change	Common	Uncommon
Texture	Dry/Papery	Moist/Slimy
Pathogen Structures	Common	Uncommon
Disintegration	Uncommon	Common

Signs and Symptoms of Fungi

Powdery Mildew

mycelia

Erysiphe sp





Gray Mold on red raspberry
spores
Botrytis cinerea



Peach Leaf curl
Taphrina deformans



Telial galls (spore horns)
Cedar-apple Rust
Gymnosporangium sp.



Fruiting Bodies
Melanized pseudothecia
Leptosphaeria sp.



Sclerotia (survival bodies)

White Mold

Sclerotinia sclerotiorum

Fruiting body
(conk)

Basidiomycete



Signs and Symptoms of Bacteria



Bacterial Leaf Spot



Bacterial Soft Rot of potato

Erwinia sp.



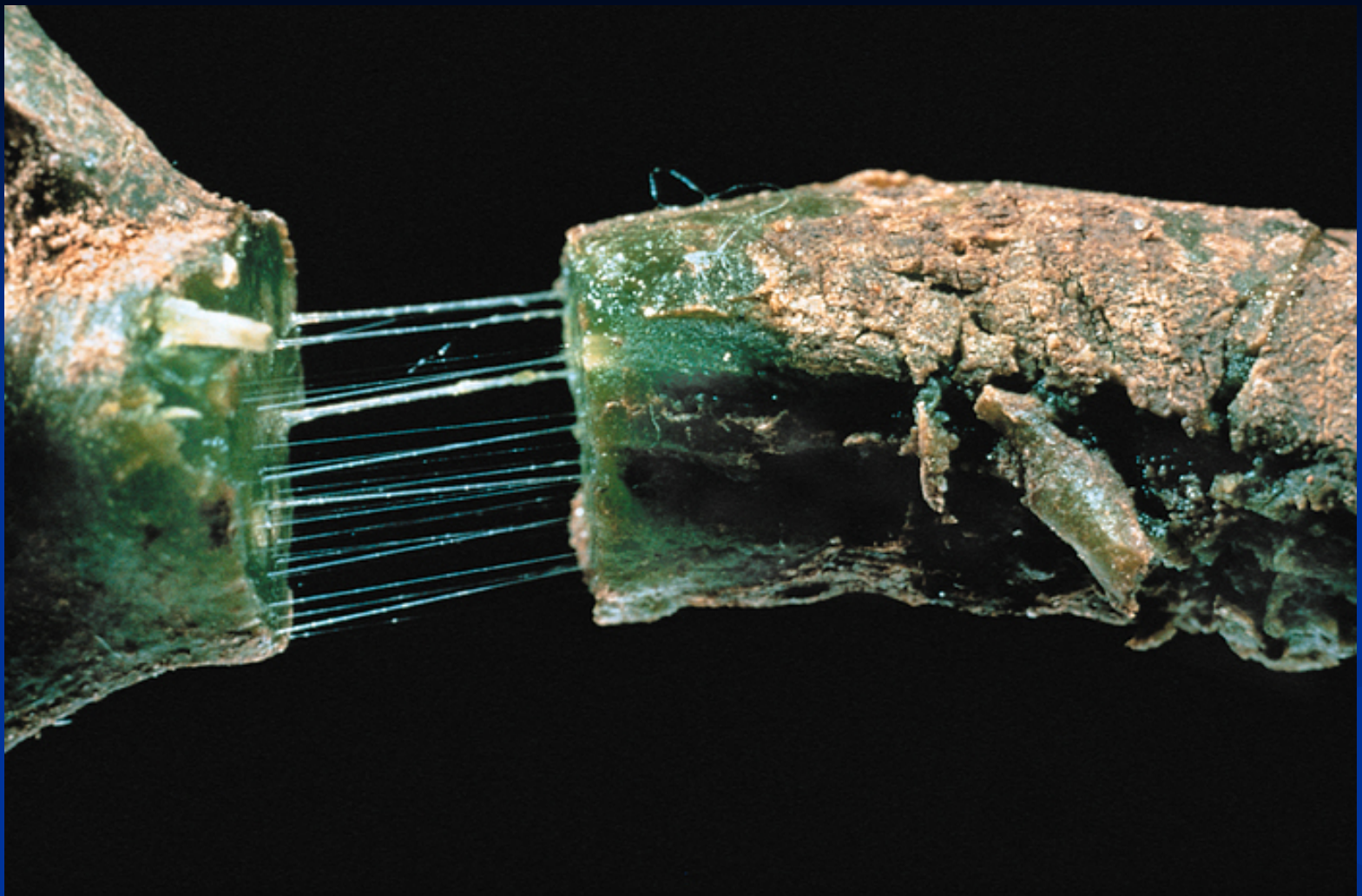
Bacterial Crown Gall

*Agrobacterium
tumefaciens*

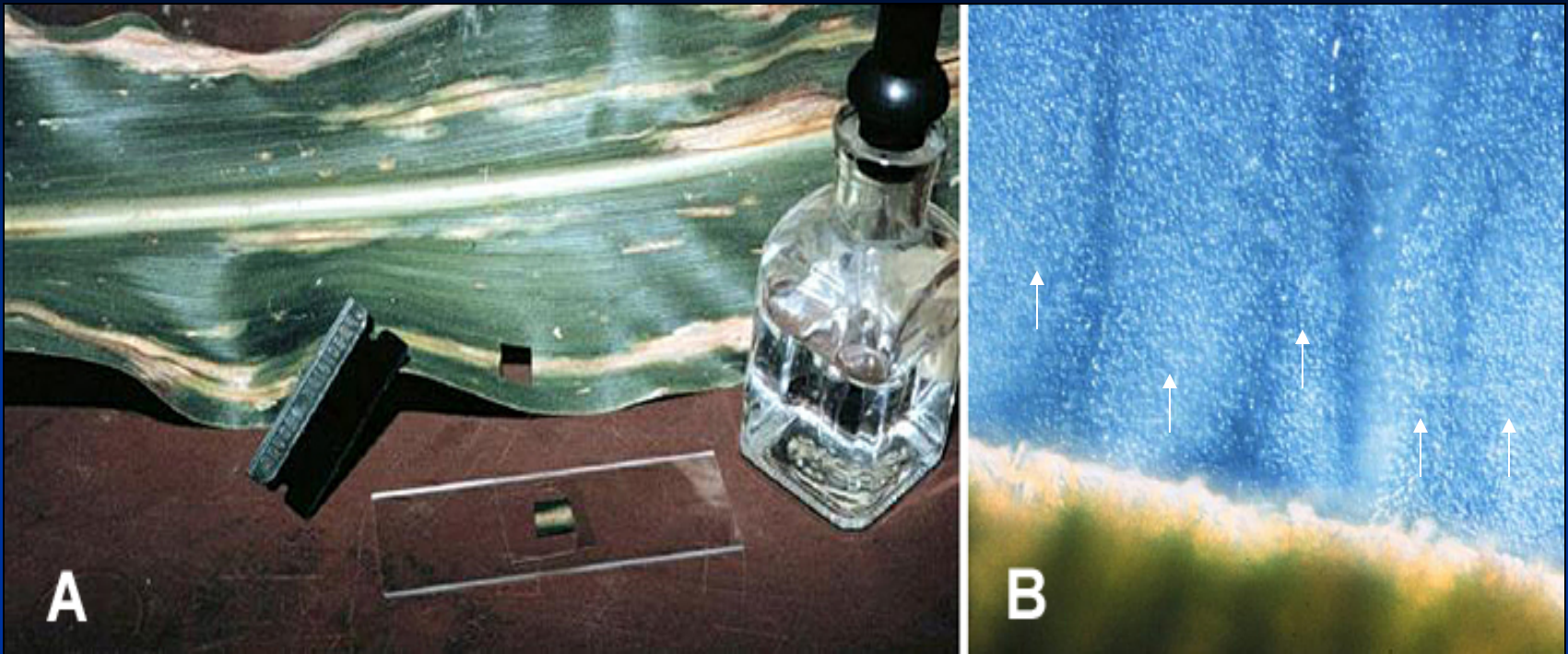


Bacterial
Canker on
apricot and
Gummosis

*Pseudomonas
syringae*



Bacterial ooze



Bacterial streaming