

# CLOVERLEAF

NEWS FROM SNOHOMISH COUNTY WSU EXTENSION • OCTOBER 2012

## Remarks from the Park...

This year marks a major shift in the way we complete our enrollment process. Last year, we shifted to using the 4-H Access enrollment database from National 4-H. Your 4-H staff has definitely experiencing a learning shift and are yet to be what we would label as experts. However, we are confident that Snohomish County 4-H can make this transition fairly smoothly. It is very important that the individual(s) that will be completing your club's enrollment attend a Volunteer Update. We have devoted a large amount of time during these updates to teaching the 4-H Access system.

I understand that this is a major change and may evoke some hesitation to adopt the system. Unfortunately, we no longer have the option of using the Blue Ribbon System that we have previously learned. I assure you this office will provide whatever support is needed. Let us know when you hit roadblocks. Begin early; deadlines will revert to May 1 for fair participation.

On another note, I am excited about the upcoming year. We continue to have a top-notch program and I am certain the richness and quality of the program will do nothing but increase. We are lucky to have the BEST volunteers and together we make a powerful team for the youth of Snohomish County!



Jana S. Ferris  
County Extension Faculty

## Kudos

To the wonderful parents and leaders for their support of the 4-H programs and youth.

To Everyone that help with the wonderful my4-H Event.

There was a great attendance to the event and we are off to another great year in 4-H.

To all the youth who went to State Fair or sent items in, you did a great job! Congratulations to those of you who made the State teams for Nationals.

# 4-H EVENTS CALENDAR

Check it out

[https://www.google.com/calendar/embed?src=djfooster%40wsu.edu&ctz=America/Los\\_Angeles](https://www.google.com/calendar/embed?src=djfooster%40wsu.edu&ctz=America/Los_Angeles)

**Don't forget to submit your dates to the 4-H Office so they can be added to this county 4-H calendar! Send them to [djfooster@wsu.edu](mailto:djfooster@wsu.edu)**

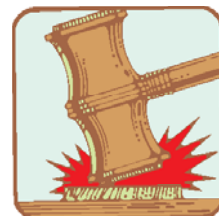
---

## 4-H Council Meeting

Put it on your calendar. **October 10th at 7:00 pm in the Cougar Auditorium** in the Education Center building. Come and join us! We are always looking for new people to become involved! This will be our first meeting for the new year.

This is an opportunity to give input on the direction that 4-H takes in Snohomish County.

**Other meeting dates are November 14th, January 9th, March 13th, May 8th and July 10th be sure to put these dates on your calendar.**



---

## RECORD BOOKS ARE DUE!!!! October 15th

For those of you who are turning in your record books to be judged at County Level. Secretary books are also due at the same time.

---

## Teen Rally November 16th – 18th 2012

<http://4h.wsu.edu/members/documents/NWRallyBrochure.pdf>

# VOLUNTEERS

## VOLUNTEER TRAINING OPPORTUNITIES

Snohomish County 4-H is proud of the commitment by each and every volunteer to provide a positive experience for youth in our community. Over the course of the past two years, many volunteers have expressed need and desire for increased opportunities for volunteer education.

All Volunteer Education Training workshops are held at the Extension Education Center, McCollum Park unless otherwise noted. A minimum of ten participants must pre-register or the class will be cancelled.

Please call Debbie Foster at 425-357-6044 or email [djfoster@wsu.edu](mailto:djfoster@wsu.edu) to pre-register.

### Volunteer Education Training Schedule

----- Fall 2012 -----

#### October

- |    |            |                    |
|----|------------|--------------------|
| 9  | 7:00 p.m.  | Volunteer Update   |
| 15 | 7:00 p.m.  | Child Protection   |
| 27 | 8:00 a.m.  | Project Leadership |
| 27 | 10:15 a.m. | Art of Delegation  |
| 27 | 12:45 p.m. | Club Organization  |
| 27 | 3:00 p.m.  | Event Planning     |

#### November

- |    |            |                        |
|----|------------|------------------------|
| 2  | 5:00 p.m.  | Volunteer Update       |
| 7  | 7:00 p.m.  | Group Facilitation     |
| 17 | 9:00 a.m.  | Working with Youth     |
| 17 | 12:30 p.m. | Experiential Education |
| 17 | 2:45 p.m.  | Reasons/Judging        |

#### November . . . Continued

- |    |           |  |
|----|-----------|--|
| 26 | 6:30 p.m. | Volunteer Update<br>(Stanwood Library)   |
| 27 | 6:30 p.m. | Volunteer Update<br>(Marysville Library) |
| 28 | 6:30 p.m. | Volunteer Update<br>(ESF/Longhouse)      |
| 29 | 6:30 p.m. | Volunteer Update<br>(Snohomish Library)  |

#### December

- |    |                  |   |
|----|------------------|---|
| 1  | 10 a.m. - 1 p.m. | Volunteer Enrollment<br>Training Lab at Extension |
| 4  | 7:00 p.m.        | Volunteer Update                                  |
| 27 | 7:00 p.m.        | Volunteer Update                                  |

**Bring your wireless-enabled laptops if you have one, if not we have some here .  
Also, your 4-H Open ID so you can log in to the new enrollment system.**

**Note:** Volunteer Updates will include training for our new enrollment system. **It is a must that every club is trained on our new systems.**

Minimum of 10 per class or it will be cancelled  
REGISTER EARLY!!!!



### 400 Needed for a National 4-H Survey

Are you currently a volunteer, staff, or faculty who works with the 4-H organization?

Do you know anyone who volunteers for or works for 4-H. We are conducting a survey of what 4-H volunteers, staff, and faculty think about the use of research-based information in the context of 4-H.

Please help us gain a better understanding by sharing your opinions – participate in our survey or forward this to someone you know who qualifies, we need 400 people to complete the survey! <https://www.surveymonkey.com/s/YYQCCLG>

This research project has been approved by the Institutional Review Board at Seattle Pacific University (IRB#111202047, expiring 07/16/2013). Participants must be 19 years old to participate in the study.

*LHBikos, Ph.D.*

**Lynette H. Bikos, Ph.D.**

Professor of Clinical Psychology  
Director of Research  
Department of Clinical Psychology  
Seattle Pacific University  
3307 Third Ave W.  
Seattle, WA 98119  
[lhbikos@spu.edu](mailto:lhbikos@spu.edu)  
206.281.2017

---

## Ambassadors

The 4-H Ambassadors are looking for more members who are willing to promote the 4-H program, help the 4-H council and leaders, and complete community service projects. The Ambassadors would love to have new people attend the meetings held at 7:00 p.m. in the Extension Evergreen Room on the 1st Wednesdays of each month.

For specific details about the Ambassador program and how you can be more involved in promoting Snohomish County 4-H, please contact Dana Bigham (at 360-805-5332).



# **Snohomish County 4-H Cavy Program**

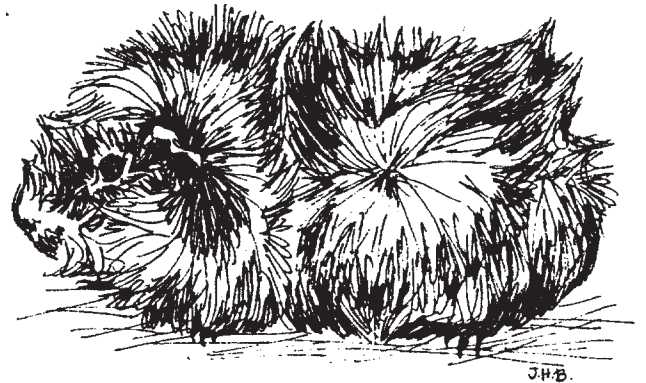
## **October 11th at 7pm**

### **Extensions – Evergreen Room**

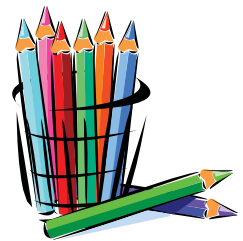
Come one, come all to the first cavy meeting of the new 4-H year! Cavies can stay at home for this meeting.

We will be discussing program highlights, fund raising ideas, program requirements for fair and much more!

Thank you,  
Jodi and Angie  
Snohomish County 4-H Cavy Program



## **CREATIVE ARTS**



Come meet the new Program Leader for Creative Arts – Sandi Johnson on October 17th, Creative Arts quarterly program meeting at Alfys pizza in Monroe.  
At 630 pm.

This is for planning the upcoming workshops. If you have any questions please contact Sandi by email [johnsonbskfamily@aol.com](mailto:johnsonbskfamily@aol.com) , cell 360 862 3547, or home 360 793 1128.





These are the nine youth with Jenaya and myself at the Kititas County Fair. We had just finished practice judging, evaluating and having a discussion on a class of market hogs when we were greeted by a local 4-H educator (I believe). She had been listening and was so impressed by our group activity that she just had to take pictures of us. She followed us to the sheep and goat barn and took more pictures. My practice is to be polite by introducing ourselves and asking in each barn for permission to practice judging the animals in each area we go. Often we are assisted by youth and leaders in our educational activity. We were very thankful to those who shared their 4-H exhibits with us. Needless to say we must have made quite an impression with our visit.

We practiced judging steers, hogs, lambs and goats. We must have spent a total of three hours in the barns in addition to going to the rodeo. We rode in two vehicles. Jenaya and I coached in each vehicle all the way there and back to Bothell where we met. Three parents came along and they did the driving so we could coach. The youth and parents very much enjoyed the day. I would believe that this trip was the highlight of the year for our livestock judging workshops.

Marlin Newhouse  
Snohomish County 4-H Livestock Judging Coach

# The Performing Arts



## Show Biz Kids 4-H Club

For youth in Kindergarten through 12th Grade who are interested in Performing Arts

Would you like to share in exciting stagecraft activities that are happening in Performing Arts?

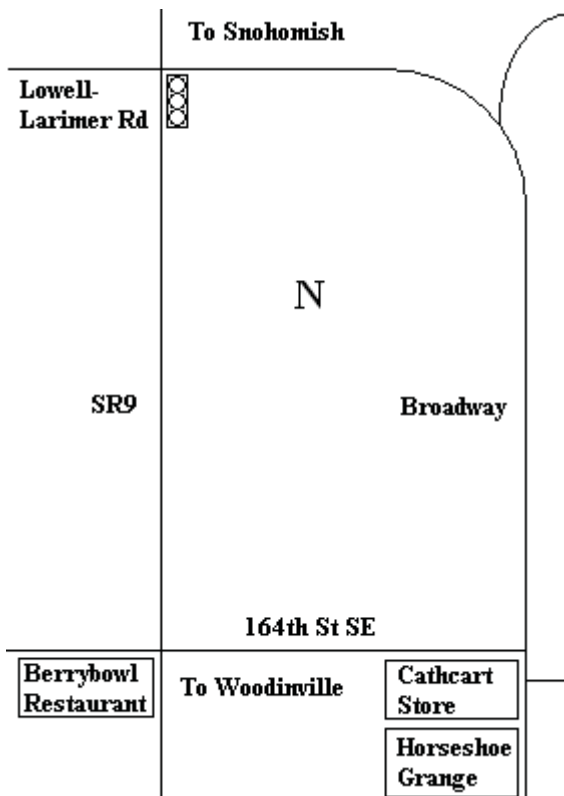
Each month

- .. Explore Performing Arts opportunities
- .. Improve your theater skills
- .. Make new friends
- .. Enjoy a great time

**For more information contact:  
Jan Bond at 360-668-6681**

Club meets

- .. Once a month
- .. On the second Tuesday of each month
- .. 6:300-8:00 p.m.
- .. At the Horseshoe Grange Cathcart/Clearview Area  
164th and Broadway, Snohomish



Written, produced and directed  
by:

Jan Bond  
Snohomish County 4-H  
Performing Arts Program Leader

Assistant Directors:

Dianna Engeseth  
Lori Pehling  
Robert Bond  
4-H Leaders

Executive Producer:

Washington State University  
Extension Snohomish County

# Program News

## Natural Resources

### October 2012

#### 11 ~ TRIP SIGN-UP MEETING

Guest speaker & information on trips scheduled for the following 3 months.  
(All Invited / 7 PM / Extension Office)

#### 13 ~ Heybrook Lookout Day Hike

850 ft elevation gain over 1.3 miles through a second growth forest regenerated from clear-cutting in the 1920's.  
(Beginner to Intermediate / Robert & Miles)

#### 25 ~ Monthly Meeting

(All Invited / 7 PM / Extension Office)

### November 2012

#### 5-9 ~ Salmon Tours

Learn about the life cycle of the salmon at the Wallace River Salmon Hatchery.  
(Beginner / ???)

### December 2012

#### 8 ~ Water Safety Training

Required for participation in any boat/kayak activities. (Beginner / Karen & Miles)

#### 13 ~ Holiday Party

Bring a potluck dish large enough to feed your family, a \$5 white elephant gift and non-perishable food for the local food bank. A great social event to get to know others! (Beginner / Everyone)



#### Event Leaders

Bob Clemence 360-668-9002  
Chris Clemence 425-318-0835  
Dottie Nelson 425 485-4736  
Dustin Edwards 425-319-0918  
Emily Jacobs 425-760-7588  
Gabrielle Roesch 425-357-6011  
Heidi Hunt 360-794-9675  
Kathy Rostrom 425-766-3918  
Lisa Jacobs 425-530-1487  
Nadine MacLane 425-788-9807  
Ray Schumacher 206-940-6904  
Robert Pokorny 360-348-3785  
Sandy Clemence 360-668-9002