

# CLOVERLEAF

NEWS FROM SNOHOMISH COUNTY WSU EXTENSION • May 2012

## Remarks from the Park...

With the decent weather this weekend, I'm reminded that it's time to gear up for the last half of the 4-H program year. As we begin to prepare for our summer activities, remember to take time to help our youth reflect on their goals for the year. Spend some time with each member and review goals, program plans and progress. It's not too late to change courses midstream to ensure goals are met, or exceeded. Often, time spent review and reflecting is all our youth need to help them refocus their efforts. And, sometimes, what looked like a good plan in October is now in need of revision. Our job is to help our young people develop, not do it for them, though.

Guide your members through this process. Ask open-ended questions, like "What steps have you taken to meet your goals this year? What can you change to make sure you will reach your goal? What assistance do you need from your leaders to help you reach your goal? Lead them to asking for assistance and help them to brainstorm likely people to approach for help.



Jana S. Ferris  
County Extension Faculty

## Kudos

- to Jodi Stebbins, Ed Matson, Lynn Chambers for becoming Shooting Sports Instructors
- to Patrick Hevesi for providing archery instruction at the Shooting Sports Training
- to the dog program for a wonderful Dog Caper
- to the Grants Committee for dispersing funding to our membership on a timely basis!
- to those programs who have made the effort to get their banking in order
- to all the interviewees for the Horse Program Scholarships
- to the Master Gardeners who have helped to making the gardening workshops a success
- to Lisa Webb for getting our first BEEKEEPING club buzzing about in their suits!
- to the ACE arts program for a well-attended Seattle Arts Museum field trip!

# 4-H EVENTS CALENDAR

Check it out

[https://www.google.com/calendar/embed?src=djfooster%40wsu.edu&ctz=America/Los\\_Angeles](https://www.google.com/calendar/embed?src=djfooster%40wsu.edu&ctz=America/Los_Angeles)

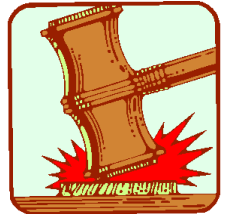
**Don't forget to submit your dates to the 4-H Office so they can be added to this county 4-H calendar! Send them to [djfooster@wsu.edu](mailto:djfooster@wsu.edu)**

---

## 4-H Council Meeting

Put it on your calendar. **July 11th at 7:00 pm in the Cougar Auditorium** in the Education Center building. Come and join us! We are always looking for new people to become involved! This is an opportunity to give input on the direction that 4-H takes in Snohomish County.

**Other meeting dates are October 10th.**



---

## FOODS

### Updated 4-H Foods Workshops Schedule

June 16th –Layered Cakes

July 7th-Canning

Unless otherwise noted, workshops will be held at the Fairgrounds in Monroe in the 4-H building.



### Foods Program Quarterly Meetings

July 12th 6-8pm Prepare for the Fair!

Quarterly meetings will be at the 4-H Extension Office at McCollum Park

Please register all workshops with Selina Allen-Clark 425-772-0074 or [Selina.k.allen-clark@boeing.com](mailto:Selina.k.allen-clark@boeing.com)

# Cats

The county cat program meetings are held the first Wed of every month (except Sept) at the Snohomish Alf's Pizza at 7pm. Everyone is welcomed at these meetings and we encourage all to come.



Paws and Claws TOO has a great website <http://www.pawsnclawstoo.com/default.htm> for information about the program and their club. This is a great resource site to use.

**The 2011-2012 show dates have been decided.**

## June 2, 2012—Commercial Building

**The dates, times and tentative topics for the 2011-2012 clinic dates have been decided:**

**Saturday, July 14th, 2012—1 PM to 3:30 PM; Breed ID**

You **must preregister** for all clinics and shows the **Wed prior** to the event. Clinics are \$2 or canned food items for the food bank and shows you must fill out the show registration form and fees per class are listed on the form. **All preregistration is done by Joyce Akin (425)513-0802. 12712 Admiralty Way #104. Everett, Washington 98204 . Remember you must participate in a clinic and show in order to go to Fair.**



# RABBITS

**Rabbit Prepare for Fair Workshop:** ALL rabbit leaders, interested parents, and interested teens are requested to attend the Rabbit Program's Prepare for Fair Workshop on **Tuesday, June 26th**. The workshop will be held in the EEC Auditorium starting at 7:00 p.m. We will be making critical fair preparations and plans. We will also be voting on the Skucy Award. It is imperative that all clubs entering rabbits at this year's Evergreen State Fair be represented. For more information, contact Don Ballard - Fair Rabbit Superintendent (balbunbarn@aol.com).

# Ambassadors

The 4-H Ambassadors are looking for more members who are willing to promote the 4-H program, help the 4-H council and leaders, and complete community service projects. The Ambassadors would love to have new people attend the meetings held at 7:00 p.m. in the Extension Evergreen Room on the 1st Wednesdays of each month.

For specific details about the Ambassador program and how you can be more involved in promoting Snohomish County 4-H, please contact Dana Bigham (at 360-805-5332).

# Program News

## Natural Resources

### June 2012

#### **22-24 ~ Dungeness Spit Camp & Kayak**

Gain kayaking experience and enjoy hiking as we camp and explore our nation's longest natural sand spit. (Beginner / Lisa & Bob)

#### **28 ~ Monthly Meeting/Calendar Planning BBQ**

Plan trips for the 2012-2013 calendar year. Hot dogs provided, bring a side dish. We are always on the lookout for new trip ideas and new leaders/co-leaders. (All Invited / Bob & Sandy)



### Event Leaders

Bob Clemence 360-668-9002  
Chris Clemence 425-318-0835  
Dottie Nelson 425 485-4736  
Dustin Edwards 425-319-0918  
Emily Jacobs 425-760-7588  
Gabrielle Roesch 425-357-6011  
Heidi Hunt 360-794-9675  
Kathy Rostrom 425-766-3918  
Lisa Jacobs 425-530-1487  
Nadine MacLane 425-788-9807  
Ray Schumacher 206-940-6904  
Robert Pokorny 360-348-3785  
Sandy Clemence 360-668-9002

### July 2012

#### **5 ~ TRIP SIGN-UP MEETING**

Information on trips scheduled for the following 3 months. (All Invited / 7 PM / Extension Office)

#### **7 ~ Water Safety Training**

Required for participation in any boat/kayak activities. (Beginner / Bob)

#### **12-16 ~ San Juan Whale Trip**

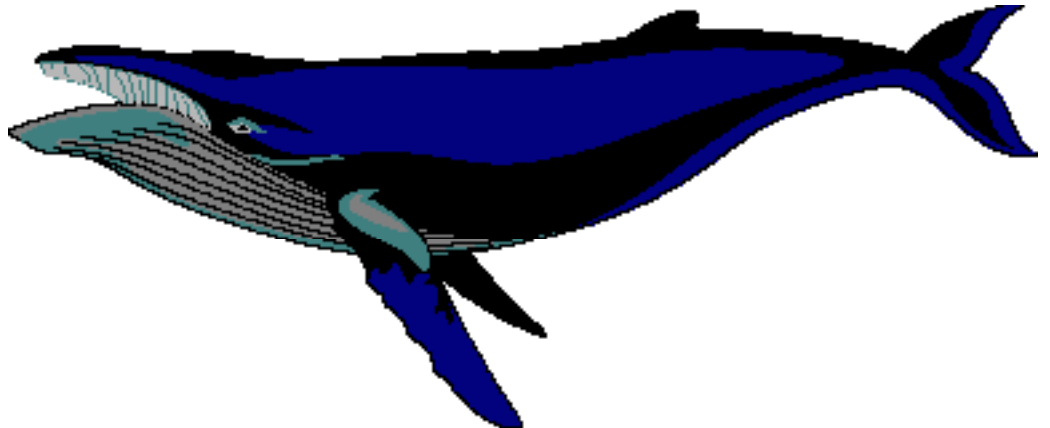
Spend 5 days on San Juan Island and camp, kayak, boat, hike and search for Orca whales! This is a perfect summer family vacation! (Beginner / Lisa & Miles)

#### **26 ~ Monthly Meeting - Fair Emphasis**

This meeting will focus on preparing for the Natural Resources fair exhibit. (All Invited / 7 PM / Extension Office)

#### **27-29 ~ Mt. Baker Camping Trip**

Camp at Rasar State Park. Schreibers Meadow provides hiking access on the south side of Mt. Baker; from beginner to advanced mountain terrain. This trip is not to be missed! (Beginner / Heidi)



# Program News

## Last Qualifying Beef Workshop for Fair.....

### BEEF SKILL-A-THON

**June 16th 9:00 A.M.** at the Extension Education Center

We will have stations set up to test your skills at what you might know. If you don't know it will be a great learning experience for you.

Breed ID

Parts ID

Grain ID

How to read a grain label

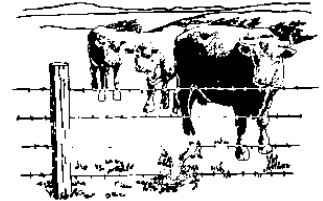
How to read a medication label

Beef Cuts

Problem Solving

Bone ID and more.....

Come and see what we have to offer, challenge yourself and have some fun.



**Please pre-register with Debbie Foster at 360-668-8232 or**

**Debscow@frontier.com**

**We would like to have 10 youth signed up by June 12th to put the workshop on. So, sign up early!!!**

**One County workshop is required for attending fair,** watch the newsletter for more workshops. If any one would like to put on an workshop or clinic it needs to be in planned and in place by June 1st or it will not count. We do need to send it out in Cloverleaf, get your information in by the 15th prior to the month of the event.

**Contact Debbie Foster at 360-668-8232 or debscow@frontier.com**

---

## Veterinary Science

These workshops are held at the Extension Education Center at McCollum Park in the Cougar Auditorium.

**Please RSVP with me for Sunday, if you already haven't.**

**June 17, 2011 @ 2PM - The Renal/Excretory System and Kidney Dissection**

**July 15, 2011 @ 2PM - Prepare for Fair 2012**

See you guys on Sunday!

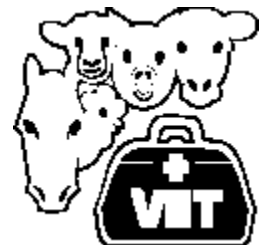
Kim Chubbuck

Veterinary Science Program Leader

Snohomish County 4-H

Phone: (425) 232-4877

Email: [snohomishcountyvetscience@gmail.com](mailto:snohomishcountyvetscience@gmail.com)



## **Snohomish County 4H Photography June 2012**



Presents

### **"Snohomish County 4H Photography"**

For the month of June, the youth of Snohomish County 4H photography will be the featured artists. Come see the wonderful photographs the member's have on display.

Formal Reception will be held on June 10<sup>th</sup>, 2012 from 1-4pm. Come by & enjoy some wonderful treats & meet the artists. All framed portraits are for sales. If you're looking for something special to hang in your home or office stop by & see the beautiful framed portraits.

### June 3<sup>rd</sup>, 2012

Set up for the Art's of Snohomish  
Where: Art's of Snohomish, First Ave. Snohomish  
Time: 1pm

### June 13<sup>th</sup>, 2012

County workshop & Judging Clinic  
Where: Extensions Office  
Time: 6:30~8:00pm

### June 30<sup>th</sup>, 2012

Tear down for the Art's of Snohomish  
Where: Art's of Snohomish  
Time: TBD

\*\*\*Look for upcoming information from Blue Chips.  
They are setting up a County photo shoot for June.\*\*\*

---

## **Photo Contest Celebrating USDA's 150th Anniversary**

...submitted by Jan Klein, [jklein@wsu.edu](mailto:jklein@wsu.edu)

As part of its 150th anniversary celebrations, the United States Department of Agriculture (USDA) invites 4-H youth, volunteers, alumni, or staff--age 14 and older--to submit photos that capture the diverse ways young people are engaged in agriculture today and the impact it has on communities. The winning photographs will be prominently displayed within the 4-H/USDA Headquarters in Washington, D.C., during National 4-H Week, October 1-6, 2012. Photos can be submitted on [www.challenge.gov](http://www.challenge.gov) starting May 31, 2012; the contest ends July 2. Photos should reflect on one of three areas of focus: citizenship in agricultural issues, how agriculture affects healthy living, and the science behind agriculture.

All eligible photos will be available for public voting during July 18-August 1. The photos with the most votes will be chosen as finalists. The finalists' entries will then be voted on by a panel of judges consisting of USDA staff who will determine the top winners.

All photographs must be taken by an amateur photographer. Visit [www.challenge.gov](http://www.challenge.gov) for official contest rules.



# Woodland Park Zoo Photography Shoot

**Saturday, June 9**

Time: 10:00am - 12:00pm.

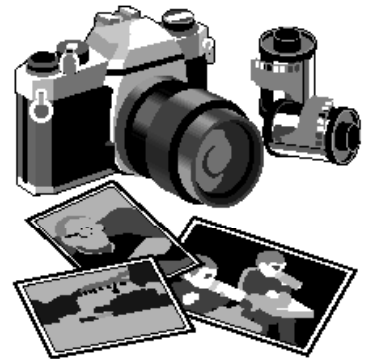
Meet inside the South Entrance to the zoo, off of N. 50th.

Contacts: Colleen Johnson 206-755-3149 or Dave Johnson 206-755-2113

**Make sure you sign in with the contact people!**

Admission:

Adults: \$17.75; Children: (ages 3-12) \$11.50; Toddlers: Free



---

## **Washington State 4-H Award Nominations**

**...submitted by State 4-H Advisory Board**

Do you work with or know of an outstanding 4-H volunteer, staff member, alumni, or supportive business that deserves to be recognized for their outstanding efforts on behalf of 4-H in the state of Washington? Consider nominating them for one of the various WA State 4-H Awards.

### **There are several awards available**

- ***Salute to Excellence In Recognition of Outstanding Volunteerism Lifetime Achievement:*** This award recognizes the efforts of an individual that has served as a 4-H volunteer for at least 10 years or more at the county or state level.
- ***Salute to Excellence In Recognition of Outstanding Volunteerism Less than 10 Years:*** This award recognizes the efforts of an individual that has served as a 4-H volunteer for less than 10 years at the county or state level.
- ***Friend of Washington State 4-H Award:*** This award recognizes outstanding persons or businesses/organizations that have contributed to making Washington State 4-H what is today, those who have made a significant contribution to the development of 4-H in Washington
- ***Washington State 4-H Volunteer's Staff Award:*** This award recognizes outstanding staff members that have contributed to making Washington State 4-H what is today, whose work has impacted 4-H at both county and state levels (beyond their own job responsibilities). Nominations will be accepted from any County Leaders' Council.
- ***Washington State 4-H Alumni Award:*** This award recognizes outstanding 4-H Alumni that have contributed to making Washington State 4-H what is today. Anyone who was enrolled in 4-H as a youth and has made a significant contribution to 4-H and/or the community.
- ***Heather Rider Leadership Award for Young Adults:*** This award recognizes the extraordinary leadership and service to others by a young person 19-22 years of age as of September 1 of the current year. This award seeks to recognize their 4-H involvement past and present at the club, county, regional, state, and/or national levels. The recognized youth will demonstrate a genuine passion for the 4-H Program.

All award recipients will be recognized at this year's WA State 4-H Forum Volunteer Recognition Banquet to be held on October 19, 2012 at the SeaTac Doubletree Hotel. For copies of the award nomination forms and instructions, see the State 4-H Award Nominations

Website at <http://4h.wsu.edu/conferences/Forum/awards.htm>.

Nominations for the Annual State 4-H Awards must be **postmarked or emailed by August 1, 2012**. Send completed nomination forms to: **4-H Advisory Board, c/o Betsy Fradd, WSU Puyallup, 2606 W Pioneer, Puyallup, WA 98371-4998**. Incomplete nominations will be disqualified. If you have questions please contact Betsy Fradd at 253-445-4543 or via email at: [fradd@wsu.edu](mailto:fradd@wsu.edu).



## **HENHOUSE Coaching Network**

### **Western Washington Coaching Clinic**

*Are you interested in learning how to breed, incubate and grow your own flock of heritage poultry? A growing group of farmers are networking together to develop a Northwest Heritage Poultry Coalition. You can join in on the excitement.*

*We are excited to provide these coaching clinics for education for small local, sustainable poultry farmers throughout the northwest. This is the advanced track for those looking to go to the next step of sustainably raising they're very own poultry. This will be a gathering of training, coaching and networking.*

#### **Topics Include:**

- **Breeding for Preservation:** *The key to preserving standard bred poultry is to get back to the fundamentals of breeding. There are very few left in North America who are maintaining breeding flocks of chickens, ducks, geese and turkeys. In this session you will learn the basics of genetics, breeding and a strategy for preserving many breeds that are disappearing quickly.*
- **Basic Poultry Health & Alternatives to Antibiotics:** *Learning the basics of good poultry husbandry is the secret to a healthy flock; but you also need to know how to recognize the common diseases and symptoms of small flock health issues.*
- **Secrets to Cooking & Marketing Heritage Poultry:** *In this final session, we will look at what it really takes to make a profit on your small poultry farm. Secrets to marketing and selling your products. You will learn some great tips.*

#### **Times & Location:**

**WSU Lewis County Extension Office** – August 21st – 22<sup>nd</sup>, 2012

Conference Room #003 - Basement of the Lewis County Historic Courthouse

*Tuesday, 1:00pm - 5:00pm & Wednesday, 9:00am - 4:00pm*

351 NW Main Street

Chehalis, WA 98532

#### **Cost and registration:**

HCN members registration: \$45.00 per person. Non-members: Registration due before August 15th: \$99.00 for both days. Includes lunch on Friday and training notes. After August 15th (and at the door) cost is: \$125.00 per person. Register at [www.centerforpoultry.com](http://www.centerforpoultry.com) or mail your checks to: Center for Poultry 642 Moffitt Hill Road. Old Fort, NC 28762.

For more information, contact Jim Adkins - 209.890.5326 [jim@centerforpoultry.com](mailto:jim@centerforpoultry.com) or Pam Watson - 360.740.1220 [pamela.watson@lewiscountywa.gov](mailto:pamela.watson@lewiscountywa.gov)



# Teen Conference



## REVOLUTION OF RESPONSIBILITY

Are you a teenager entering grades  
8 to 12 next fall?

Are you interested in your future?

Have you thought about options after  
high school?

If any of those are you, then please  
plan on attending the 2012 4-H Teen  
Conference!

Open to any youth, 4-H membership  
not required to attend

- June 24 - 26, 2012
- At Washington  
State University in  
Pullman, WA
- Sponsored by WSU  
Extension 4-H



Washington-State-  
Teen-Conference



@TeenConference

**Come to explore education options, investigate careers,  
discover positive life skills and experience campus life!**

**Conference & Registration Information at <http://4h.wsu.edu/conferences/TeenConf>**

**Registration Opens May 18 — sign up early as some classes fill quickly.**

**Any Questions?**

**Contact Jan Klein by email at [jklein@wsu.edu](mailto:jklein@wsu.edu)**

Extension programs and policies are consistent with federal and state laws and regulations on nondiscrimination regarding race, sex, religion, age, color, creed, national or ethnic origin; physical, mental, or sensory disability; marital status or sexual orientation; and status as a Vietnam-era or disabled veteran. Evidence of noncompliance may be reported through your local Extension office. Trade names have been used to simplify information; no endorsement is intended.

# AWARDS DEADLINES

## *Due on or before July 1*

Award	Application	Nominated by	Eligibility
4-H Leader Jacket	Extension Office	Members or leaders	Outstanding enrolled 4-H leaders for two or more years. Must have been active in some capacity at county level.
Outstanding Leader Patch	Extension Office	Member, parent, or leader	5+ years of 4-H leadership, county level involvement, must already have a leader jacket.
High Five Award – Impact	Extension Office	Member or parent	4-H leader has had a positive impact on an individual, club or program.
High Five Award – Clover	Extension Office	Another leader	4-H leader has had a positive impact on 4-H in general.
Program Volunteer of the Year	Individual programs		Outstanding enrolled 4-H leader for two or more years.
County Volunteer of the Year	Nominated at Leaders Council meeting	Another leader	Outstanding enrolled 4-H leader for two or more years. Contact 4-H Council for more information.

## *Due on or before July 1*

Award	Application	Based on	Eligibility
4-H Member Jacket	Extension Office – 4 options available – please see application for further information.	Attitude, cooperation, responsibility, helpfulness, offices & committees held, leadership, community service, personal growth, etc.	Open to members 4 <sup>th</sup> grade and above who have completed at least 18 months of 4-H. Leader recommendation is required.
Project Achievement Pins	Extension Office – please see basic pin and specific program pin guidelines.	Size and scope, learning experiences, knowledge and skills in the project applied for, leadership and citizenship, etc.	Open to members 5 <sup>th</sup> grade and above. Active participation in the 4-H project for at least 2 years.
Presidential Environmental Youth Award	Extension Office or <a href="http://www.epa.gov/enviroed">www.epa.gov/enviroed</a>	Environmental impact of project completed by member or members	Complete an environment project.

Note: Scholarships listed are subject to change or cancellation. Check with the County Extension Office for current information.



## CREATIVE ARTS



### Art Judging Workshop with Shelly Johnson

**Thursday, June 14**

**WSU Extension Center, Evergreen Room: 7:00pm-8:30pm**

This workshop will be designed around our Creative Arts study guide. We will cover the basics of the Elements and Principles of design and why they are important. There is so much to learn about art and this workshop will be a great place to start.

**This class is open to all ages. Class size is limited to 20.**

Please be sure to use the following form to send in your registration.

Creative Arts Workshop Registration Form – Winter/Spring 2012	
<b>Workshop</b>  <i><b>select only one workshop per form</b></i>	<input type="checkbox"/> Stencil Painting Using Pan Pastels – January 14 <input type="checkbox"/> Creative Storytelling – February 12 <input type="checkbox"/> Educational Display – February 25 – <i>No fee</i> <input type="checkbox"/> Making Linocut Stamps and Prints – March 3 – <i>Intermediates/Seniors</i> <input type="checkbox"/> Block Printing using Printfoam – March 3 – <i>Primaries/Juniors</i> <input type="checkbox"/> The Science of Color – April 28 <input type="checkbox"/> Art Judging Workshop – June 14
Children attending	1. Name: _____ Age: ____ 2. Name: _____ Age: ____ 3. Name: _____ Age: ____
Parent name	
Address	
Phone	
Email	
Amount enclosed	\$ _____.00 <i>add \$5.00 per participant per workshop</i>
4-H Club name	

Sign up for the Winter/Spring 2012 workshops by filling out the above form completely. **Please use a separate form for each workshop.** Send the form along with a check for \$5.00 per participant per workshop to:

**Linda Worthy**  
**22303 132<sup>nd</sup> St SE**  
**Monroe, WA 98272**

You may email questions to Linda at: [caballos10@msn.com](mailto:caballos10@msn.com)

- Please make checks payable to: **4-H Creative Arts**
- The \$5.00 workshop fee holds your child's place in the workshop.
- Workshop fees are non-refundable unless we cancel the workshop.
- You **MUST** send the above registration form with your payment. Linda will send you an email confirmation when she receives your registration form and payment.
- A child may attend as many workshops as they'd like, but they must attend at least one workshop in order to participate at the Evergreen State Fair in August.
- Your child must be enrolled in Creative Arts through your 4-H club or the Extension Office by May 1, 2012. Please call Debbie Foster at 425-357-6044 for more information about enrollment.

If you have any questions about these workshops, please email me at [snococreativearts@gmail.com](mailto:snococreativearts@gmail.com)

Thank you for your interest in 4-H Creative Arts. I hope you see you at a workshop soon!

Shelly Johnson – Snohomish County Creative Arts Program Leader – [snococreativearts@gmail.com](mailto:snococreativearts@gmail.com)

# The Performing Arts



## Show Biz Kids 4-H Club

For youth in Kindergarten through 12th Grade who are interested in Performing Arts

Would you like to share in exciting stagecraft activities that are happening in Performing Arts?

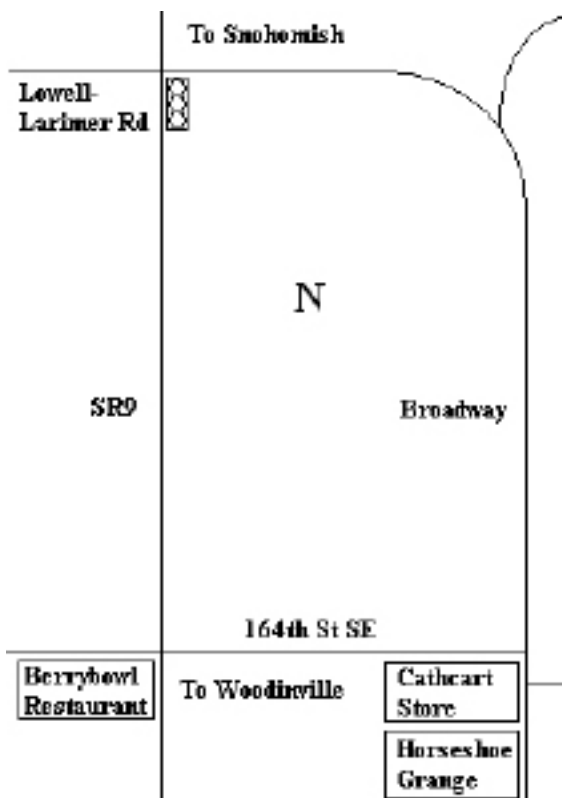
Each month

- .. Explore Performing Arts opportunities
- .. Improve your theater skills
- .. Make new friends
- .. Enjoy a great time

**For more information contact:  
Jan Bond at 360-668-6681**

Club meets

- .. Once a month
- .. On the second Tuesday of each month
- .. 7:00-8:00 p.m.
- .. At the Horseshoe Grange Cathcart/Clearview Area  
164th and Broadway, Snohomish



Written, produced and directed  
by:

Jan Bond  
Snohomish County 4-H  
Performing Arts Program Leader

Assistant Directors:

Dianna Engeseth  
Lori Pehling  
Robert Bond  
4-H Leaders

Executive Producer:

Washington State University  
Extension Snohomish County

**Snohomish County**  
**4-H PYGMY GOAT PROGRAM**  
**2011-2012**

**PROGRAM CONTACT INFO:**

- **Program Leader: Debbie Bond**  
3221 153<sup>rd</sup> Ave SE, Snohomish  
425-335-0859
- **Fair Superintendent: Kim Wilson**  
14112 99<sup>th</sup> Ave NE, Arlington  
425-923-5555  
wilsonfarms.007@gmail.com
- **Find us on Facebook!**  
<http://www.facebook.com/#!/pages/Snohomish-County-4-H-Pygmy-Goats/139985439349206>
- **EPGA web page:**  
<http://www.geocities.com/evergreenpygmygoatassociation/>

**PROGRAM REQUIREMENTS:**

- Enroll in Pygmy Goat Program by May 1.
- Have on file a 4-H Certificate for each animal by June 1.
- Register your herd with USDA Scrapies ID Program, proof of reg. required.
- Each animal must have permanent identification such as tattoo or microchip.
- 4-H Record Book must be completed & turned-in to Supt. by due date to participate at fair.
- Participate at All Breed Goat Show in June.

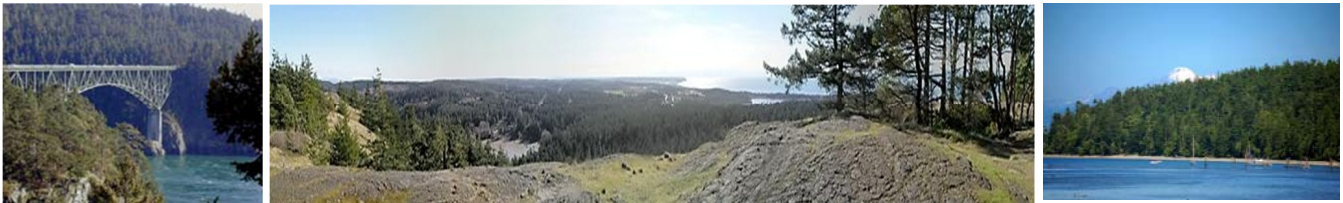
<b><u>MAY 2012</u></b>	<b><u>JUNE 2012</u></b>	<b><u>JULY 2012</u></b>	<b><u>AUGUST 2012</u></b>
<b>1</b> , Enrollment Due, Entries PSJLS due <b>5</b> , 10am Meeting	<b>1</b> , Goat Cert's Due <b>1-3</b> , PSJLS <b>9</b> , <b>All Breed Goat</b> Show, Stanwood Fairgrounds <b>23-24</b> , EPGA June Show, ESF	<b>21</b> , 10am Meeting <b>28</b> , Silvana Fair	<b>3-5</b> , Stanwood- Camano Fair <b>11</b> , 10am Meeting, <b>Record Books Due</b> <b>18</b> , Set-up Party <b>22</b> , Haul-in ESF <b>23-28</b> , 4-H ESF

# Washington State University Extension

## CAMP CORNET 2012

The 2012 Camp Cornet season will provide fun, friends, and learning that you won't want to miss.  
Two sessions run between July 15-28, 2012

Join Campers ages 7-14 from five western Washington counties. Experience nature, marine study, arts & crafts and recreation classes. Participate in campfires, carnivals, canoeing, talent shows, and more!



**The week long resident camp still costs only \$199.00**  
(including camp picture and t-shirt).

We are offering discounts for our campers this year! If you are sending more than one child to camp, or sending one child for two weeks, you may take **\$25 off!**

If you recruit a **new camper** (not a family member), you may take **\$10 off**. Their registration must be sent in with your registration to receive this discount. Please send a note that you are recruiting a new camper.

The Northwest Washington Summer 4-H Youth Camp has over 50 years experience in serving youth. The camp is situated in the beautiful Cornet Bay Environmental Learning Center. The area is home to bald eagles, deer, raccoon, squirrels, owls and a rich variety of forest and marine life. The Camp Cornet staff work together to plan a comprehensive program of nature study, as well as healthy outdoor activities. Returning staff members make the camp especially welcoming to campers. Campers are 4-H members and non-members alike from diverse backgrounds who come together to experience self-growth, learning and fun.

An exceptionally well-trained staff works to provide campers with the highest caliber of programs and care. Staff members include Specialists in Nature, Arts & Crafts, Swimming Supervision and Recreation, an Activities and Program Coordinator, a Health Officer, trained volunteer counselors and a dedicated Head Cook and Kitchen staff working alongside the Director and Assistant Camp Director. **Glenn DePeralta** is the Camp Director.

For scholarship information, please contact the WSU Extension Office in your county.

**For registration form go to:**  
**<http://snohomish.wsu.edu/4h>**