



Colville Reservation

WASHINGTON STATE UNIVERSITY  
EXTENSION



# Biocontrol Agent Workshop

Tuesday, August 30, 2016

9:00 am –2:00 pm

Colville Reservation WSU Extension Office  
22 Nespelem/San Poil St.

*Please bring your own lunch & water, as the afternoon portion will be in the field*

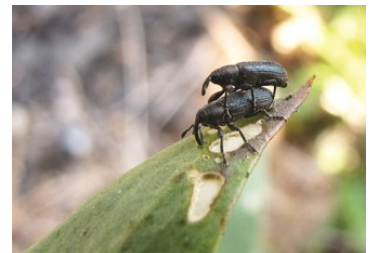
Nespelem, WA

## ~ Come & Learn ~

- The underlying principles of biological weed control
- How to effectively use biocontrol as part of your integrated weed management strategy
- How to select appropriate release sites
- How to identify biocontrol agents for specific weed-biocontrol agent systems
- How to conduct long-term monitoring to assess biocontrol effectiveness
- About potential new biocontrol agents that are being developed



For more information or to pre-register, please contact:  
Danielle Blevins, Soil Conservationist  
CCT Land Operations/ Range Department  
(509) 634-2338  
or  
[danielle.blevins@bia.gov](mailto:danielle.blevins@bia.gov)



Persons with a disability requiring special accommodations while participating in this program may contact WSU Colville Reservation Extension, PO Box 150, 22 Nespelem/San Poil St., Nespelem, WA 99155, (509)634-2304, or [ljmclean@wsu.edu](mailto:ljmclean@wsu.edu) at least five days before the program.

Cooperating Agencies: Washington State University, U.S. Department of Agriculture (USDA FRTEP Award #2013-41580-20796) and Confederated Tribes of the Colville Reservation, Colville Agency BIA, and Daniel L. Fagerlie, Project Director, [fagerlie@wsu.edu](mailto:fagerlie@wsu.edu) Extension programs and employment are available to all without discrimination. Evidence of noncompliance may be reported to your local Extension office.

